



Grand View University
Fall 2013

MEET **TODAY'S**
GRAND VIEW
STUDENT

In this issue, you will meet several Grand View students. By getting to know the students featured in this issue, you will gain a sense of our entire student body.



PHOTO: DAN VANDER BEEK '90

In many ways, our students today are similar to those who attended Grand View in our very early years. Our students come to Grand View filled with hopes and dreams, true ambition, real potential, and a commitment to making their mark in the world. Many of them come from working class homes and some have overcome significant challenges just to be here. Some are children of alumni; others are the first in their families to attend college. The primary difference between today's students and those first generations of GV Vikings is diversity. While those early students were mostly children and grandchildren of Danish immigrants living in a handful

of Danish-American communities, today's students come from 34 states, 17 countries and a variety of ethnic backgrounds.

The challenges I and my administrative team face also are similar to those of our predecessors: keeping Grand View affordable to students of modest means while maintaining quality.

I believe we are indeed one of the most affordable options for students today. We now benchmark what our students pay relative to the cost of attending one of Iowa's three state universities. This is what we have found...after grants and scholarships, 75 percent of 2013 full-time, residential Grand View freshmen paid tuition, fees, room and board that were comparable to or less than the published in-state prices at Iowa's public universities.

Yet, that fact gets over-shadowed by media coverage of college costs and student debt, coverage that often includes several myths. The National Association of Independent Colleges and Universities has compiled data to dispel nine common myths about private, nonprofit higher education (http://www.naicu.edu/special_

table of contents

**BIG
CHANGES:
PART 3**

2

An overview of the renovations that took place on Grand View's campus this summer.

**AND WE KEEP
GROWING AND
GROWING...**

4

Student Center construction is slated to begin Spring 2014, with a targeted completion of Fall 2015.

**MEET TODAY'S
GRAND VIEW
STUDENT**

Meet a few of our students, get to know them and discover how much more GV has to offer.

initiatives/nine_myths/).

“College costs are skyrocketing” is one of the assertions we hear regularly. Yet, data collected by the College Board this fall shows that the average inflation-adjusted net tuition and fees (published tuition and fees minus grant aid from all sources and federal higher education tax benefits) at private colleges dropped eight percent from 2008-09 to 2013-14.

Another widely held view is that most college students graduate with more than \$100,000 in loans. Yet the Postsecondary National Policy Institute's data show that:

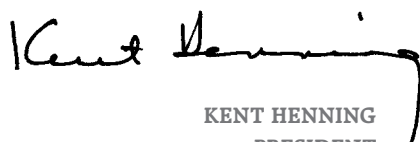
- In 2012, 40% of borrowers (undergraduate and graduate students across all sectors of higher education) owed less than \$10,000; 70% owed less than \$25,000; and 88% owed less than \$50,000.
- Only 4 percent of all borrowers (undergraduate and graduate students across all sectors of higher education) owed more than \$100,000.
- Average debt per borrower among all bachelor degree recipients at private colleges in 2011-12 was

\$29,900, compared to \$25,000 at public colleges.

Grand View's statistics – both for student debt and for the trend in net price – would be in line with the national averages listed above. And we are fully committed to remaining affordable to our traditional base of students. In fact, our Board of Trustees made affordability one of our key strategic plan goals.

If you are reading this magazine, you most likely already are a friend and supporter of Grand View. You can help us in one important way: please help spread the word that Grand View is affordable. If, when you read about the students featured in this issue, you think of someone like them who is beginning that college search, let them know of our commitment to remaining affordable while providing a high quality educational experience.

Thank you!


KENT HENNING
PRESIDENT



2013 NEW FACULTY Top from left: Dr. Adriana LaGier, assistant professor of biology; Dr. Mark Daly, director of international studies and ELL tutor; Dr. Cathy Beck-Cross, assistant professor of social work; Dr. Bobbi Olson, assistant professor of English; Jennifer Wells, assistant professor of education; John McTaggart, instructor in computer science. Bottom from left: Dr. Michael LaGier, assistant professor of biology; Kelly Kane, instructor in nursing; Dr. Barbara Burrows, instructor in mathematics; Juli Probasco-Sowers, instructor in communication; Dr. Bonnie Hall, assistant professor of chemistry; Dr. Kristin McCullough, assistant professor of mathematics; Mark Doerffel, assistant professor of music.

PHOTO: KELLY (DeVRIES '00) DANIEL



FALL 2013
VOLUME 62, NUMBER 3

Editor LACIE SIBLEY '07
Designer KELLY (DeVRIES '00) DANIEL
Contributing Writer MOLLY BROWN,
Photographers JIM HEEMSTRA, LINDSAY MONTGOMERY '14, ANGELA PADILLA '09, AKE PHETDAVIENG '14, JAY PROVENZANO '15, KAITLIN TUCKER '14, DAN VANDER BEEK '90, ELLIE WALTER '14, DOUG WELLS

Board of Trustees

Chair PAUL E. SCHICKLER

Karen (Sorensen '70) Brodie

Michael L. Burk
Eric W. Burmeister

Gregory J. Burrows

C. Dean Carlson

Peter M. Coconie

Mary C. Coffin

Eric T. Crowell '77

Robert S. DeWaay

Bao Jake "B.J." Do

Virgil B. Elings '58

Brett E. Harman

Scott M. Harrison

Nick J. Henderson

Kent L. Henning

Laura L. Hollingsworth

Richard W. Hurd '72

Carey G. Jury '70

José M. Laracuent

Robert L. Mahaffey '58

Anita Norian

James W. Noyce

Gary E. Palmer '72

Kurt E. Rasmussen

Dawn Taylor

Martha A. Willits

Honorary Members

Marcia H. Brown

Garland K. Carver

H. Eugene Cedarholm

Phillip D. Ehm '51

Thomas R. Gibson

Larry D. Hartsook '63

Michael N. Hess

J. Robert Hudson

Theodore M. Hutchison

Richard O. Jacobson

Charles S. Johnson

Timothy J. Krumm

Robert E. Larson

James E. Luhrs

Sandra K. (Jensen '57)

Rasmussen

Elton P. Richards

John P. Rigler

GV Magazine is published three times annually by the Marketing Department at Grand View University and is distributed at no charge to alumni and friends of the institution.

Constituents are encouraged to send contributions, suggestions and information for Alumni News to: Lacie Sibley, Editor; Grand View University; 1200 Grandview Avenue; Des Moines, IA 50316-1599 515-263-2832; lsibley@grandview.edu or fill out the form online at www.grandview.edu.

Grand View University
1200 Grandview Avenue
Des Moines, Iowa 50316-1599
515-263-2800
800-444-6083
www.grandview.edu

BIG CHANGES: PART 3

1



10



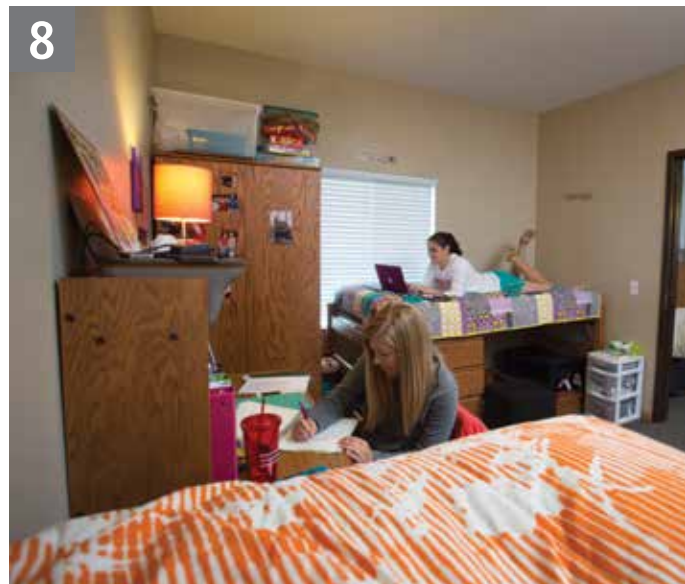
11



9



8



2



PHOTOS: JIM HEEMSTRA, LINDSAY MONTGOMERY '14, AKE PHETDAVIENG '14, JAY PROVENZANO '15, LACIE SIBLEY '07, KAITLIN TUCKER '14, ELLIE WALTER '14, DOUG WELLS

3



12



Clockwise from top left: **1.** Officially dedicated as Grand Central, the old Grandview Avenue is complete and open for pedestrian traffic and events. **2.** Grand Central Plaza hosts one of its first events, the back to school gathering and Plaza dedication ceremony. **3.** A night view of Grand Central Plaza. **4.** One of the new Grand Central banners that line the pedestrian walkway. **5.** An evening view of the Plaza and Cowles Communication Building. **6.** The new basketball court located centrally in the residential housing area. **7.** Recently opened this fall, the new Hull Suites. Each suite houses four students and includes a living space and bathroom amenities. **8.** One of the Hull Suites bedrooms. **9.** An exterior night view of the Viking Theatre with the new red metal siding. **10.** The interior of the Viking Theatre is complete with new seating, lighting, glass handrails and carpet, as well as new green room and scene shop. **11.** One of the renovated Elings Science labs. Dr. Paul Rider conducts class in an upgraded multi-purpose classroom. **12.** One of the new basketball locker rooms.

4



5



6



7



AND WE KEEP GROWING, AND GROWING...

BY LACIE SIBLEY '07, EDITOR

In October, the GV Board of Trustees approved proceeding with the planning for the renovation of and an addition onto the Student Center. The Student Center is the capstone project of a 12-plus year reinvestment in facilities that support campus community. During the past 12 years, we expanded athletic and student recreation space with the construction of the Johnson Wellness Center in 2001. We also built four new residence halls, which added 640 beds in a variety of living arrangements. This past summer, we completed the conversion of the former Grandview Avenue into a plaza and walkway, creating an outdoor gathering place for students, faculty and staff.


The Student Center will culminate efforts to recreate a vibrant residential campus environment. The new Student Center will centralize and update campus dining for the entire campus, residents and commuters alike. It will remain the home of student services,

and will greatly expand informal and formal meeting spaces, allowing GV to host more group functions. It also will house the Viking Theatre (the renovation of which was completed this fall), the bookstore, student activity space, and our Communication department, which will bring student media into closer contact with students.

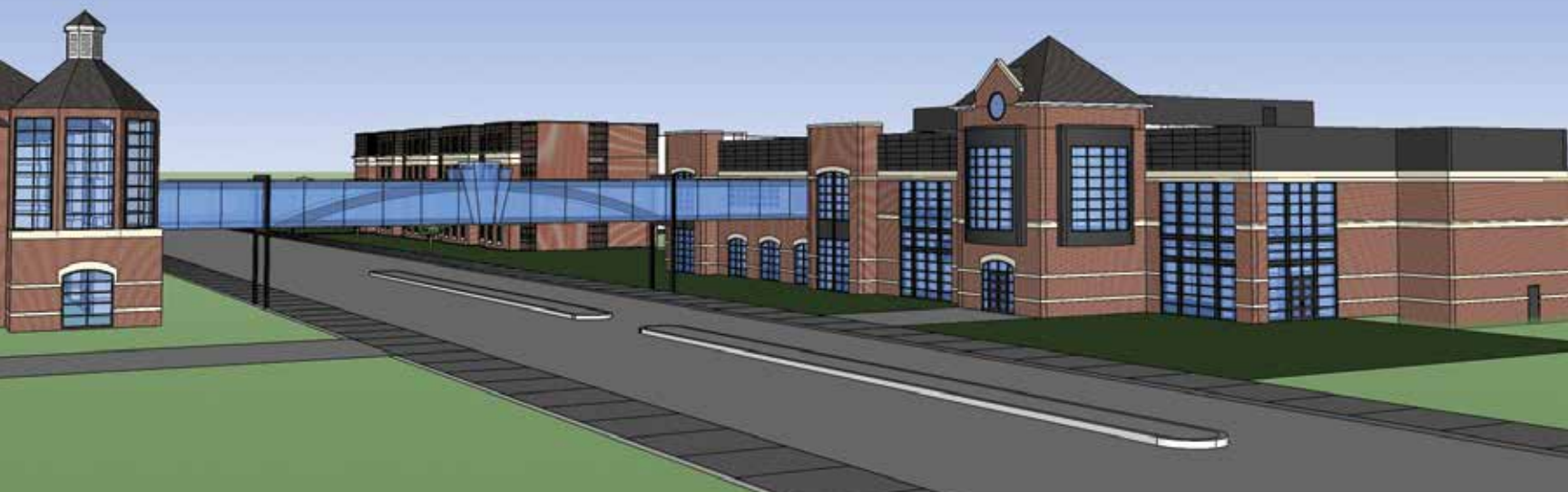
The building will sit, as it does now, on E. 14th Street, across from the Rasmussen Center, and next to the 236-bed L Apartments, which opened in 2012. It will have a profile that is closer to the street than the current building and will extend two stories. The position of the building will enable us to construct a skywalk across E.14th street connecting the new Student Center with the Rasmussen Center. We hope to be able to construct that skywalk at the same time as the Student Center. The total project will encompass more than 70,000 square feet, which will include the renovation of roughly 80% of the existing

34,000 sq.-ft. Student Center.

The Transformations Student Center Campaign has let our faculty and staff support exactly what they're passionate about – our students. The number of reasons for giving is diverse but all reflect a sincere belief in the work being done at Grand View. The daily interaction our faculty and staff have with our students helps shape our community and the impact it has on so many lives. As leaders on campus, who better to understand our students' needs, concerns and passions than those who are on campus with them? Who better to provide them with the support they deserve than those who see them every day of their college careers? This current Faculty/ Staff campaign set new records for giving. Seventy-five percent of full-time employees have given to the new capital campaign, totaling close to \$325,000. This far exceeded the goal of \$250,000.

If all goes as planned, the expanded/renovated Student Center would be complete by the fall of 2015. 

A nearly finalized rendering of the new student center renovation and skywalk. Construction is planned to commence in the spring and be completed by fall 2015.



ALUMNI SURVEY RESULTS

BY CAROL BAMFORD, VICE PRESIDENT FOR MARKETING

Nearly 900 alumni took the time to respond to our alumni survey this past summer. Thanks to all who responded and shared comments and observations with us. There were many suggestions that we are taking into account, and a few we've implemented already. For instance, Grand View transcripts can now be ordered online at www.grandview.edu > Alumni.

We'd like to share a brief snapshot of the survey results. Keep in mind that the respondents spanned several generations, from those who attended when GV was predominantly an institution catering to families of Danish descent to those who graduated a year ago. So here are some highlights.

- More than 80% are working in a field that is either directly or somewhat related to their major at GV.
- More than 30% have an advanced degree, and the vast majority engage in lifelong learning in some way or another.


- More than 75% felt that Grand View prepared them well for their first and/or current job. And 90% felt they left GV with the knowledge and perspective needed for being fully engaged with life.

We asked for perceptions about how well their GV education enhanced abilities and skills in a number of specific areas that relate to our mission. While it's clear that GV has done a fine job of helping students learn to write, communicate, analyze and solve problems, it's apparent that our considerable strengths lie in the areas of critical thinking, teamwork, appreciating diversity, community engagement, and developing a commitment to lifelong learning, as well as the capacity to live life fully and wholly. Eighty percent agreed that their GV experience empowered them to fully use their academic preparation, skills, abilities, and passions to live a life of meaningful work and service.

Satisfaction levels with alumni

communications, services and events were quite high, and the questions asking about additional alumni services and events yielded some helpful suggestions. Satisfaction with the total GV experience was at 92% (satisfied or very satisfied), and two-thirds fully agreed that GV is an excellent value.

What emerged from the survey in broad terms was a high level of satisfaction with GV, regardless of when the respondent attended, although there are some generational differences, and a portrait of an educated, engaged, aware, and highly productive group of alumni. The survey results made it quite clear that GV lives and fulfills its mission, which really hasn't changed much over the generations.

As time goes on, we intend to use the survey results to enhance communications and services to alumni and to inform future changes in our curriculum and student services. Again, thanks to all who participated. 

GV CO-SPONSORS DAHS CONFERENCE


BY LACIE SIBLEY '07, EDITOR

Grand View, along with the Danish American Heritage Society (DAHS), Danish American Archive and Library, and the Danish Immigrant Museum, sponsored the October DAHS conference, "Innovation, the Danish Way." Participants enjoyed three days of thought-provoking, challenging, and uplifting presentations from both Danish and American experts on innovation in a variety of areas, from energy and sustainability to culture and the arts.

They also enjoyed exhibits and tours, and toured Grand View, including the Danish Immigrant Archives.

Keynote speaker Søren Hermansen, director of the Energiakademiet (Energy Academy) on the Danish island of Samsø, is a key player in a social and scientific experiment – the effort to transform Samsø into Denmark's Renewable Energy Island. Hermansen is a recognized Danish expert in renewable energy.

Speakers included: Poul Bertelsen,

MSAADA Architects, speaking on innovations in design and social mission; Henrik Klinge Jacobsen, senior researcher at DTU—the Technical University of Denmark, on innovation in environmental economics; and Nete Schmidt, Scandinavian studies, University of Wisconsin, on innovation in popular culture. Former U.S. Ambassador to Denmark Laurie Fulton presented the banquet address. 



Søren Hermansen, keynote speaker at the conference, explains what he and his community are doing with renewable energy in Denmark.



GLOBAL VISION WEEK

BY LACIE SIBLEY '07, EDITOR

Grand View's fourth annual Global Vision Week kicked off September 16 focusing on our relationships, past and present, with Southeast Asia. This included activities to help us understand our history, through guest lectures, films, and discussions about what we did and did not learn from the Korean and Viet Nam wars. Additional activities focused on the present day business environment in Asia, with discussions on trade between Iowa and China, and how businesses maintain the delicate balance of doing business with Chinese companies when our nation's relationship with that country is strained. A study abroad fair and annual Meals from the Heartland event rounded out the week.

The campus participated in a school supply drive for Cattell Elementary School. The GV community was also invited to a lunch and learn presentation by Dr. Charles Day, a guiding teacher of the Des Moines Meditation and Mindfulness group. The week included

classroom visits from founder and CEO of ABC Virtual Communications, B.J. Do; manager of the International Office, Business Division of the Iowa Economic Development Authority, Kathy Hill; and senior Des Moines police officer, Doua Lor, who also presented a lunch and learn sharing his personal story as a refugee from Laos and his outreach work with the Asian community.

Students participated in a hunger banquet simulating the real distribution of food in the world and bringing awareness to global poverty. The banquet included a facilitated presentation about world hunger, as well as a guest presenter, born in Thailand.

GV welcomed our first Albert Ravenholt Visiting Scholar, Ambassador Kenneth Quinn. Quinn is a former U.S. Ambassador to the Kingdom of Cambodia. He assumed leadership of the World Food Prize Foundation in January 2000, following his retirement from the State Department after a 32-year career



Ambassador Kenneth Quinn speaks as GV's first Albert Ravenholt Visiting Scholar. Students, faculty and staff packaged meals for Meals from the Heartland.

PHOTOS: DOUG WELLS, LACIE SIBLEY '07

in the Foreign Service.

Following the keynote address, the campus community picnicked on Grand Central Plaza where President Kent Henning officially dedicated the Plaza and our new core curriculum. **GV**

Watch the address by Ambassador Kenneth Quinn He addresses the biggest problem facing our world by the year 2050.



FACULTY & STAFF ACCOMPLISHMENTS

JAMES EWALD, assistant professor of art and design, had his paper, Researching Dyslexic Readers Through Graphic Novel Conventions: Pitfalls and Possibilities, accepted and presented by the International Association of Societies of Design Research in Tokyo.

MARY JONES, professor of art and design, was an artist in residence at Anchor Graphics, Columbia College, Chicago, in June. During the residency she produced a suite of seven intaglio prints titled, Lincoln Avenue: a Deep Map.

DR. MARK MATTES, professor of religion and philosophy, presented a lecture, The Afterlife, for the Ray Society. He also edited a book that was published by Vandenhoeck & Ruprecht entitled, Twentieth-Century Lutheran Theologians.

DR. MATTHEW E. PLOWMAN, associate professor of history, presented his paper, The Transfiguration of Sir Roger Casement: Anti-Imperialist, Nationalist, and Martyr in the 'German-Hindu' Conspiracy, at the Roger Casement

(1864-1916): The Glocal Imperative conference in Tralee, Ireland.

JOSH RYTHER, associate professor of art and design, is the creative director for the Grand Rapids-based marketing firm Deksi; the organization opened a second office in Des Moines' East Village in June.

RACHEL SCHWALLER, assistant professor of art and design, is researching and creating a project entitled, DIY: Spirit Fingers, including both performance-based photographs and sculptural installations.

ADMISSIONS RECRUITS IN PUERTO RICO

BY LACIE SIBLEY '07, EDITOR

Last spring GV hosted more than 20 high school counselors from private Puerto Rican schools who were traveling throughout the Midwest. In August, GV sent one of our own, Tina Miranda, assistant director of admissions, to Puerto Rico with a company called Autopista Americas – a leader in organizing and structuring recruiting tours. There were more than 50 other colleges and universities participating – mostly from the East Coast, Georgia, and Florida. The other Iowa institutions that attended were Iowa State, Loras, and Graceland.

Autopista Americas set up 29 high school visits around Puerto Rico, which included almost all the island regions and three extremely large regional college fairs, one in Ponce and two in San Juan. Each morning the group boarded a charter bus and traveled to the high schools to host mini college fairs, speaking with hundreds of Puerto

AARON TINDER, professor of art and design, had three recent works selected for inclusion in the Quincy Art Center's Biennial Quad-State Exhibit. The piece, *Wonderful (And Other Songs)*, was awarded Best of Show in the exhibition.

ROBIN WHITE, professor of education, was appointed to the Council on Education Development, a state council that studies and recommends new statewide systems for evaluating Iowa teachers and school administrators.



Grand View table with student VJ Gonzalez '15, Johanna Ortiz (VJ's mother), and Assistant Director of Admissions Tina Miranda.

PHOTO: SUBMITTED

Rican students during the ten days. The regional fairs were large and attracted thousands of families.

"It was such a great experience," Miranda said. "I spoke with almost 400 Puerto Rican students about the opportunity to come to Grand View. The students and families are excited about the opportunities that Grand View has to offer students and the success of our programs." **GV**

CYNDI WILEY, assistant professor of art and design, had a paper on an art and design app she developed with her design students accepted and presented by the International Association of Societies of Design Research in Tokyo. She also presented her pedagogical framework: Empathy, Connectivity, Authenticity, Trust, and Spirituality, at the national AIGA Design Educator's Conference in Minneapolis. **GV**



Laugh along with Assistant Professor of Health and Physical Education Zeb Sullivan as his class learns about laughter yoga.

NURSING STUDENTS EXCEL IN NATIONAL EXAM

We are pleased to announce that Grand View nursing students performed exceptionally well on the March-June quarter National Council Licensure Examination (NCLEX). The pass rate statistics: nationwide – 83%; Iowa – 82.1%; Grand View – 95.65%.

The NCLEX is an examination for the licensing of nurses in the United States. After graduating from a school of nursing, students take the NCLEX exam to receive a nursing license. A nursing license – granted by the state where the recipient met the requirements – grants permission to practice nursing. **GV**

STUDENT SUCCESS

KELSEY MAGGARD '14 had two photographs accepted to the Photography Salon at the Iowa State Fair and received a ribbon in the Color Things and Still Life class. **JORDAN RENZELMAN '14** had two photos on display, and **CHELSEA DELMOTT '13**, **TIFFANY HOLTGRAVES '13** and **LINDSAY MONTGOMERY '14** each had one photograph displayed.

JESSICA MESECHER '13 and **MIKE WIGNES '15** presented at the National American Chemical Society meeting in Indianapolis, Ind., in September, along with professor of chemistry Laura Salazar.

KIMMY LIEBERG '16, bass clarinet; **RACHEL DACHENBACH '15**, trumpet; and **RYAN SCOTT '14**, percussion were selected for membership and participation in the Intercollegiate Honor Band. **GV**

MEET TODAY'S GRAND VIEW

OUR STUDENTS AND OUR CAMPUS HAVE CHANGED greatly over the years. Founded more than 100 years ago, Grand View offers a high-quality education to a diverse student body in a career-oriented, liberal arts-grounded curriculum at two campus locations. We welcome traditional students and adult learners representing a wide range of religious and cultural backgrounds. Today's student population is approximately 2,300, with more than 1,800 fulltime students. And while our campus continues to grow and our student residences continue to reach capacity, we still boast class sizes of approximately 17 students and a student to faculty ratio of 14:1. We have maintained that close-knit campus community quality and the family atmosphere past, present and future students have come to associate with Grand View. We also offer 40 majors and four master's degrees, as well as an abundance of clubs and organizations and 24 award-winning sports.

Needless to say, we are very proud of our roots, where we have come from and where we are going. And we are extremely proud of our students and everything they continue to accomplish. We invite you to meet a few of our students, get to know them and their interests, and discover how much more GV has to offer.



EW STUDENT

ARTICLE AND PHOTOS BY LACIE SIBLEY '07, EDITOR

JORDAN HENKENIUS, HEALTH PROMOTION MAJOR

JORDAN KNEW SHE WANTED TO HELP people in some way. She always had a game plan and knew the direction she wanted to go. After being accepted to Grand View, she researched and received the Grand View Director's Award – a four-year renewable scholarship based on academic achievements.

"GV has a wide range of scholarships available and when I was looking at other schools, they didn't have as many scholarship opportunities," Jordan said. "I did fine on the ACT but it was nice to find a scholarship that wasn't based solely on my ACT score."

Starting out as a nursing major, Jordan enjoyed her classes and felt academically challenged but began to feel like something was missing. She was three years into the nursing program when she started to question her path.

"I'm a really stubborn person, and the GV nursing program is great, but I started to realize that maybe nursing wasn't for me. I got nervous about changing majors," Jordan said.

Jordan did some soul-searching and dived deeper into the health and wellness area. She spoke with wellness faculty, her advisor, the campus wellness director, and even job shadowed in different areas of the wellness field.

"I found my passion in health and wellness and preventative care, working one-on-one with people to help them make healthier choices," Jordan said. "I finally went to my advisor and changed my major. It will only take me one extra semester to complete

my health promotion degree."

Internships are a major part of the Grand View experience. Being in the heart of Des Moines, Grand View has many connections in the metro area for internship and job shadowing experiences. After changing her major, Jordan needed more field experience for her resume and internship requirements. With Grand View's metro location, Jordan found an internship with the American Heart Association, which opened her eyes to even more possibilities. She helped organize the Heart Ball, organizing volunteers and assisting with the planning of wellness events. Jordan took a part-time position with Physiotherapy Associates – which will transition to full-time after graduation. She is instructing exercise classes at several locations and will oversee a new weight loss program for clients needing knee and hip replacements.

"I'm really glad I took the plunge and switched my major to follow my passion," Jordan said. "Grand View made it effortless and helped me make sure this was the right decision for me before moving forward with it."

Jordan was also very involved on campus. She was the Viking Volunteers president for three years. As a freshman, she knew she wanted to participate in service opportunities, and at that time, the club was just beginning to grow. She jumped right into a leadership position and began to market the club on campus. During her sophomore year she took the club president role and started to build the group, making it larger and more involved. Viking Volunteers participated in many service projects including Habitat for Humanity, Big Brothers/Big Sisters, The Giving Tree, Meals from the Heartland, Luther Park, and more in the Des Moines area.

AKE PHETDAVIENG, APPLIED MATHEMATICS & LIBERAL ARTS MAJOR

WITH A DESIRE TO TRULY UNDERSTAND mathematics, Ake welcomed Grand View's small classes and one-on-one relationships with our faculty. He didn't feel like a number. In fact, he developed close relationships with his instructors and soon realized he could go directly to them with questions rather than through a graduate assistant – GV doesn't have those!

"I like that my classes average about 15 students," Ake said. "And I've really gotten to know my professors on a personal level. They not only know my name, but they know me – who I am and what my interests are."

Being an older fulltime day student, Ake has different interests and viewpoints than some of his classmates. However, he has found ways to get involved and make connections through the Math Club, of which he was the Social Chair, and the Math Modeling Contest – a national contest where students have two days to solve a problem using the skills and knowledge they have gained throughout their college careers.

"As a student, you get frustrated when you start to wonder why or how this will apply to your life after college," Ake said. "But at GV you actually feel comfortable asking the why questions. The professors always have an answer... whether it's from their own experience as instructors or their lives outside the classroom, or from professionals in the field you're studying – there is a reason. That's one of the best things about learning – asking questions and discovering that there is a reason we are doing these things."

In addition to mathematics, Ake also found his niche with photography and video. He's been developing his photo skills for several years, starting with his family's old Minolta camera. For him, photos and video melded into one another, and he started to dip his toes into digital video.

"In high school, rather than saving up for a nice car to drive, I saved for nice camera equipment. So while most of my classmates had nice cars, I drove an old van and had a really nice camera," Ake laughs.

That tradeoff has come in very handy. Not only has Ake continued to fine-tune his photo and video skills, he's also landed several paid freelance opportunities.



RACHEL DACHENBACH, ELEMENTARY EDUCATION & MUSIC MAJOR

RACHEL WALKED ONTO THE GRAND VIEW CAMPUS for a visit and knew immediately this was the place for her.

"I heard about Grand View from the time I was very little. We went to a Lutheran church and our pastor was a GV grad," Rachel said. "I didn't like the idea of a big school; I wanted smaller classes and the opportunity to be involved in many things, and when I came for a visit it felt like my home away from home."

Rachel received a music scholarship and got involved with choir and band. She enjoys the constant interaction the band and choir have on campus, performing at campus events such as homecoming, honors convocation and commencement. She also assists with music scholarship auditions and creates connections with new students, much like she did during her own audition day.

"To put a face with a name and know at least one person when you are new to campus makes starting this part of your life a little less daunting," Rachel said. "I like that I can do that for others."

As a choir member, Rachel enjoyed the opportunity to go on the annual spring music tour, which travels internationally every four years. She has traveled to the west coast, toured throughout the Midwest, and overseas to Denmark and Germany.

"It was one of the coolest experiences I've had," Rachel said. "Not only did we go to these places and perform, but we were ambassadors for our school, our state and our country. We stayed with host families, which was very unique and something I will never forget."

As a Philip Hougen Scholar, Rachel is involved with campus ministries and proud of the club's outreach to the campus. They minister to all students, and the campus pastor is a presence for everyone, from athletes to fine arts students to science majors...everyone.

Grand View offers two honors programs, one of which is LOGOS. LOGOS is an invitation-only honors program designed to refine your critical thinking, examine your beliefs and test your values.

"LOGOS is the best experience that I've had at GV," Rachel said. "In fact, as a class, we were kind of sad on the last day. It's a lot of work but the results are so rewarding."

There is no test, just a book that students read and then dive into a conversation about the content and the questions it brings forward. Rachel formed strong bonds with her LOGOS peers and felt comfortable putting her ideas and opinions out for discussion.

Rachel also represents Grand View as a Presidential

Ambassador. This invitation-only program is available to selected incoming freshmen to help them develop leadership skills through meetings and personal interactions with GV President Kent Henning and the Board of Trustees. Presidential Ambassadors are involved in various activities and seminars on and off campus, and network with Des Moines community leaders.





MAYRA ALARCON, SPANISH FOR CAREERS AND PROFESSIONALS & STUDIO ARTS MAJOR

BECAUSE OF GRAND VIEW'S 40-PLUS CLUBS and organizations, Mayra had a plethora of experiences waiting for her when she transferred to Grand View. Starting out in a large university, she quickly decided she wanted a more personal college education that was closer to home. Once on the GV campus, she quickly learned how easy it is to get involved. She also realized that her campus organization experiences would not only benefit her as a student but also build her resume.

"My extra-curricular activities help me stand out and provide me with opportunities to meet people with similar interests. I've started to develop a networking system as a student, which will help me when I'm looking for jobs," Mayra said. "Being involved gives me something to look forward to in my busy week, and I've benefited a lot by improving my leadership and communication skills, while developing many friendships."

Mayra enjoys helping others and gaining leadership experience. She is a tutor and a multicultural ambassador.

"I have received notes from those I've tutored thanking me for my patience and positive attitude. It is refreshing to know I'm making a small but powerful impact on someone's education."

As a multicultural ambassador with the Diversity Alliance club, Mayra has sharpened her leadership, oral and written communication skills. She has assisted with student recruitment and diversity initiatives, which have provided her with useful knowledge and experience for a lifetime. Diversity Alliance promotes and values the diversity inherent within the Grand View campus. The group organizes campus-wide events, including the annual Multicultural Fair, awareness projects, and the Martin Luther King, Jr. Day celebration. She credits her team involvement with helping to overcome her fear of public speaking and to venture out and try new experiences.



TODD NIELSEN, GRAPHIC DESIGN

WITH GRAND VIEW'S DANISH heritage and Todd's Danish family roots, a study abroad experience to Denmark was the ideal fit.

"I have deep Danish history – my mother's grandparents and my dad's great-great-grandparents all emigrated to America from Denmark," Todd said. "I always wanted to visit the country. My sister traveled there when she was 17, and my mom visited when she was 17 also."

Grand View offers short-term faculty-sponsored study trips and summer programs, as well as semester or yearlong study experiences.

Through Grand View's partnership with the Danish



CHAD LOWMAN, SPORT MANAGEMENT MAJOR

FOR CHAD, DES MOINES IS HOME. As a wrestler, he attended an NAIA Division I school for two years and then transferred to Grand View. It was the best decision he's made.

"The wrestling coach contacted me and set up a visit. Once I got here, it felt like a good fit," Chad said. "Everyone was friendly and positive. And when I started classes, I realized that everyone wants you to succeed in everything you do. My professors are very supportive and even attend my wrestling events to cheer me on."

Returning to Des Moines was an easy transition, and transferring to GV was simple. Grand View accepts up to 66 semester hours of transfer credit from junior and community colleges. The combination of Chad's scholarship and his financial aid package made the cost comparable to that of a large state school.

"My athletic scholarship was an added bonus that helped get me to Grand View; however, knowing what I know now, I would have come here regardless of a scholarship," Chad said.

Chad has watched the campus grow and change. Nothing is stagnant, and he's proud to say he's been part of that growth and Grand View's athletic success. Chad was the 2013 National Wrestling Champion (157 pounds), took third in the 2012 Nationals, was named the 2013 and 2012 NAIA All-American, was a 2013 NAIA Scholar-Athlete, named to the 2013 and 2012 NWCA/NAIA Academic Team, and was the 2013 National

Qualifying Tournament Champion.

"I have a huge support system made up of my professors, family, coaches, teammates and even athletes from other teams," Chad explained. "We want each other to succeed, so we support not just our own team but all GV teams. When I came to Grand View, things turned around for me. I learned to balance being an athlete with my academic responsibilities – which always come first. When you go to class and make the right choices, that transfers over into your athletic life, and you can give it your all. You can't skip class and then expect to do well in practice. When you do well in class, then you will do well on the mat or the court or the field, and in your life outside Grand View."



MAJOR

Institute for Study Abroad (DIS), Todd spent two terms abroad. He discovered that school in Copenhagen is similar to GV except he commuted by train daily, and some of his classes traveled to different countries as part of their study.

"The Danish grading system is a bit more difficult. I noticed few students received high grades," Todd explained. "But the experiences I had were incredible."

While in Denmark, Todd lived with a host family. His "family" took him in as one of their own and immersed him in Danish life. Todd remarks that the best part of his whole overseas experience was living with his host family and truly becoming part of their family.

"I've grown as a person and view the world completely differently," Todd said. "It's one of the best things a college student will ever do. The experiences you get far outweigh the cost, and the people you meet are some of the most incredible people you will ever know. It's the best decision I've made."

Todd's interest in graphic design and the encouragement



from his high school art teacher led him to Grand View and our graphic design program. He searched for a college where he could play baseball and get the education he needed for his future career. Grand View's state-of-the-art facilities in the Rasmussen Center for Community Advancement Professions – which include two Mac labs, painting and drawing studios, a critique room, a special projects room and a exhibition gallery – have made his academic experience enjoyable, challenging, and most importantly, applicable to his intended career.

"Grand View is perfect for me; I've learned so much and had so many opportunities," Todd said.



BRYCE ADGER, BUSINESS ADMINISTRATION MAJOR

BEING A STUDENT-ATHLETE CAN BE CHALLENGING but it's do-able according to track athlete and business major Bryce.

"Everyone at Grand View wants you to succeed, which helps make being a student-athlete manageable," Bryce explains. "Not only does it look good on my resume, but it helps keep me focused, physically and mentally healthy, and has brought me some success as well."

Bryce was recruited from his home state of Texas as a GV football player and later transitioned over to the track team. As a track athlete, he is a decathlete and has been a conference champion in four events, anchor for the All-American 4x4 team, and placed fourth at Nationals.

"I didn't think I would go to college, but then I was recruited," Bryce said. "I visited campus in the middle of a snow storm, and I signed that day. Everything about Grand View was right for me. And I wanted to get away from home, be independent and discover who I was."

As an athlete, Bryce takes advantage of the exclusive athlete weight room and trains at GV's stadium. The Viking strength and conditioning room features ten Power Lift stations; more than 9,000 lbs of plates, dumb bells, and bars. Athletes also have access to Sisam Arena and the Charles S. Johnson Wellness Center fieldhouse and indoor track, as well as outdoor fields.

Bryce is an RA and puts his business skills to use sponsoring and promoting campus and residential events. He also helped co-found a student organization and is part of the business club, Phi Beta Lambda.

"I've always been the type to just jump right in," Bryce said. "Being involved on campus and having my teammates and roommates there for support and encouragement has been great. There really isn't any room for homesickness with everything going on around campus and in my classes."



ALY MERSCHMAN, DIGITAL MEDIA PRODUCTION & POLITICAL STUDIES MAJOR

ALY IS ALL ABOUT INVOLVEMENT and making the most of her time at Grand View. She started out with a major in broadcast, discovered a passion for radio, and eventually developed an interest in political science.

From day one, Aly was involved with the dance team, which she had the opportunity to captain, gaining valuable teamwork, management and cooperation skills. She learned right off the bat that high school athletics and college athletics are completely different.

"When you're recruited, you have the chance to receive athletic scholarships, which is really nice because you don't have a lot of extra time outside of class, studying, practice and workouts for a part-time job," Aly said. "However, as a student-athlete, you learn time management, and you get to take advantage of several perks student-athletes get – like the strength and conditioning coach, moving onto campus early, and competing at state, regional and national levels."

Aly also participates in many campus organizations such as Team GV where she gives campus tours to new and prospective students and provides them with a real-life student perspective. As a GV United member, she works with the alumni relations staff to help keep alumni connected to GV. She also runs the GV radio station. She organizes student shows and hosts her own show each week. As a work-study – which is a paid position on campus – she helps broadcast students edit video.

Even though Aly lived just east of Des Moines, she wanted to live on campus, and she's glad she did. She made strong connections with her roommates and got in on the excitement that happens after class gets out.

"I definitely recommend living on campus – that's where all the exciting and really fun stuff happens!" Aly said. "I made so many friends. That probably wouldn't have happened if I didn't live on campus. And I was able to participate in fun events for residential students."

Along with her campus involvement, Aly was excited to experience the real-world. A representative from Clear Channel offered her an internship position, which she eagerly accepted. For an entire summer, she assisted with KISS 107 programming and tracked radio logs, while also getting a behind-the-scenes glimpse at what a career in radio really looked like.

"Having that big-name company on my resume will have a big impact and look good to potential employers," Aly said. "I'm glad I had that experience, and my professors with their Des Moines connections helped me get it."



JESS HUNOLD, NURSING MAJOR

JESS GREW UP IN DONNELLSON, A SMALL IOWA TOWN. She wanted a college that felt like family, where she would have opportunities for individual attention from her professors and smaller classes where she felt comfortable participating. But she also wanted to be near or in a larger city with many events and opportunities available outside of class.

"I went on a campus tour, met some professors and got to see what campus was really like," Jess said. "Everyone was welcoming, and I could definitely feel the small campus family environment my guide told me about."

Jess visited Grand View a second time during Nursing Action Day. She learned more about the nursing program and actually experimented with different nursing tools in the on-site Center for Learning, and visited with current nursing students.

"After that action day visit there was no doubt about it – Grand View was right for me," Jess said. "And transitioning from my small-town life to life in a metro city was actually pretty easy! Des Moines has so much to offer, and Grand View is like its own little community where I actually felt like I was living in a small town in the middle of a big city. I also looked forward to living on my own, and living at GV is one of the best decisions I've made."

From her first year on campus, Jess immersed herself in student activities. She's been involved with Viking Volunteers, Stand Up To Cancer, Team GV, View Crew and Student Leadership Team, as well as the Nursing Student Association.

At first she joined these organizations to meet people, but she soon found herself getting so much more out of them.

"Being involved has provided me the chance to attend retreats, build peer relationships, and find out more about myself," Jess said. "It's given me opportunities to try new things and discover things I never knew I enjoyed...but that's what college is all about."

Jess was offered an eight-week internship in oncology at the Roswell Park Cancer Institute in New York. Her balanced involvement with campus organizations and academics demonstrated her commitment to education and proved that she was willing to step outside her comfort zone.

"I spent four weeks in the Intermediate Care Unit and another four weeks on the Hematology Oncology floor," Jess explained. "I was able to strengthen my hands-on skills, as well as have more patient and co-worker interaction. I feel I am more than ready to begin my career as an oncology nurse."

Watch videos of all the students featured in this issue of GV magazine in our online edition.



WRESTLING ATHLETES MAKE A DIFFERENCE IN TORNADO-RAVAGED OKLAHOMA

The GV wrestling program seized the opportunity to demonstrate its championship lifestyle off the mat and make a difference in the lives of many affected by tragedy.

After the tornadoes that devastated Oklahoma in May, eight wrestling members and assistant coach Jordaryl Logan joined the Journey Church to form a disaster relief team that traveled to Moore, Okla., to assist in disaster relief. The tornado in Moore was the largest tornado to hit the area, claiming the lives of 23 and injuring 377.

"It wasn't just the destruction of homes, but the livelihoods of these people that were destroyed," said Logan.

An elderly couple was fortunate not to have their home completely destroyed, but the exterior was badly damaged, covered in fallen trees and debris. Logan described the experience of helping this couple as one of the most rewarding and

fulfilling experiences he's had.

"With the use of GV manpower and machine saws, we helped clear the property" Logan said. "Those people were so grateful for our help; they even offered to cook us dinner."

The relief team was among the first responders to provide assistance to flood victims returning to their homes. They came prepared with medical and cleaning supplies, food, and personal hygiene items.

The team partnered with the American Red Cross and made a second trip to Oklahoma and assisted the organization in the distribution of flyers and continued cleanup assistance.

"Going into it, we weren't really sure what we'd be doing, and we were intimidated by the magnitude of the damage, as well as the extreme heat. In the end, all the hard work was worth it," Logan said. **GV**

Wrestlers Angelo Crinzi, Brian Warren, Isiah Tatum, Ali Mohamed, Cody Swim, Logan Kellogg, Damone Manning, Joey Hutchins and assistant coach Jordaryl Logan assisted with tornado relief in Oklahoma. PHOTO: SUBMITTED



VIKING TEAMS PACK 1-2 PUNCH

GV athletics continue to grab national attention with three Viking teams ranked among the top two in the nation.

The two-time national champion wrestling team is ranked the No. 1 team in the NAIA Top 20 Preseason Poll. The Vikings, in their sixth season of competition, won back-to-back national championships in 2012 and 2013. GV has three top-ranked individuals - national champions Gustavo Martinez (141 pounds) and Eric Thompson (285 pounds), and 2013 national runner-up Isiah Tatum (149 pounds).

The men's soccer team has been ranked in the NAIA Top 25 every week in 2013. They earned the program's highest ranking of No. 1 in October and have maintained that ranking for two weeks. They upset two top-five teams en route to the top spot.

In its sixth year, Viking football is one of four teams in the nation that remain undefeated in 2013. GV

kicked off its season with a win over NCAA Div I Drake University and has handled four NAIA Top

25 teams, including defending national champion Marian (Ind.), to achieve the program's highest rating of No. 2 in the nation. At 8-0, 4-0 MSFA Midwest, the Vikings are on their way to making the program's second playoff appearance. **GV**

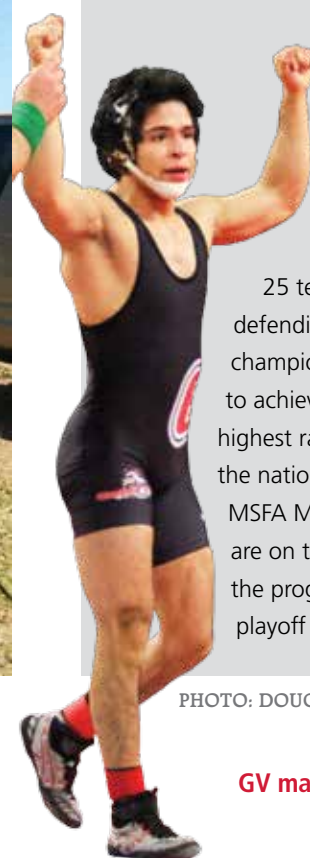


PHOTO: DOUG WELLS

Head Football Coach
Mike Woodley has inspired the GV
community with his Viktor-y dance.



FALL SPORTS SHORTS

Cross Country: Men

- Four top-ten team finishes.
- PRs set by every member.
- Third place team finish at MCC Championships.
- Kevin Brown sixth at MCC Championships; qualified for nationals.
- Brown (First Team), Justin Welsh (HM), Kennedy Kiprop (HM) All-Conference.

Cross Country: Women

- Three top-five finishes; runner-up at Mustang Gallop.
- Kelsey Carbajo, Jasmine Nielsen MCC Runners of the Week.
- Program's fifth-best team time at Les Duke Invite.
- Jasmine Nielsen sixth, Kelsey Carbajo seventh at MCC Championships; qualified for nationals.
- Nielsen and Carbajo First Team All-Conference.

Football

- Ranked in NAIA Top 25 every week in 2012; highest ranking of No.2.

- Upset NCAA Div I Drake.
- 10-0 in regular season, 6-0 in MSFAW.
- Wins over four NAIA Top 25 teams.
- Derek Fulton (twice), Zach Hollier, Dudley Bickham earned MSFA Midwest Players of the Week.
- Hollier NAIA National Defensive Player of the Week.
- Won third straight MSFAW title.
- Qualified for NAIA playoffs for second time.

Golf: Women

- Won Mount Mercy Invitational, Viterbo Invitational, Donald Ross Collegiate.
- Runner-up at Viterbo Invitational; Ashford Invitational.
- Kenzie Rottinghaus medalist at Donald Ross Invite, Wartburg Fall Invitational.
- Nicole McDonald medalist at Viterbo Invitational.
- Rottinghaus (twice) MCC Player of the Week.

Golf: Men

- Won Viking Classic, NAIA Midwest Invitational, Kohler Collegiate Classic.

- Jay Monahan, Tyler Christians, Matt Weeks, Ben Wollam MCC Golfers of the Week.
- Monahan medalist at Mid-South; Weeks medalist at NAIA Midwest Invitational.

Soccer: Men

- Ranked in NAIA Top 25 every week; highest ranking of No. 1.
- Wins against four NAIA Top 25 teams.
- Won MCC regular season title, 6-0 record.
- Jonny Macadam (twice), Travis Barton, David Maccicza (three times), Erik Hundevad (twice), Ross Alexander MCC Players of the Week.
- Earned top seed for MCC Tourney.
- Alexander, Hundevad, Macadam, Maccicza, and Gustavo Soares De Souza named to MCC First Team; Ryan McGowan, Aaron Scott MCC Honorable Mention.
- Macadam MCC Player of Year; Blair Reid MCC Coach of Year.



PHOTO: DOUG WELLS

YACINICH TO RECEIVE 2014 ROBERT E. SMITH

The National Association of Intercollegiate Athletics (NAIA) Baseball Coaches Association (BCA) executive committee selected head baseball coach, Lou Yacinich, as the 2014 recipient of the Robert E. Smith Achievement Award. Yacinich will receive the award January 3 during the Rawlings-NAIA Baseball Hall of Fame and Honors Luncheon at the American Baseball Coaches Association (ABCA) Convention in Dallas, Texas. The Smith Award is presented to an outstanding NAIA coach or administrator who demonstrated unselfish promotion

of NAIA baseball.

"Coach has dedicated the majority of his lifetime serving NAIA college athletics," Scott Dulin, NAIA-BCA Past President and USA Baseball Liaison, said. "He directly – or indirectly – makes baseball the best experience he can. One comment of Lou's that really stuck out was when he told me, 'If the other coaches in the NAIA think I can help NAIA Baseball and all the players that play NAIA baseball, then it's my duty and my chance to make it better.'"

Yacinich has served as the head



From left: Women's volleyball celebrates winning the MCC Tournament and an automatic bid to nationals.

Three-time men's soccer player of the Week David Macsisza. Football players dump water on Head Coach Mike Woodley following the Vikings' season opening win against NCAA Div I Drake.

PHOTOS: DOUG WELLS



Soccer: Women

- Received votes in national rankings several weeks.
- Finished second in MCC, 4-2 record.
- Morgan Buzzell (twice), Liz Slaton, Jeri Nagle, Kayla Pitman MCC Players of the Week.
- Pitman, Slaton, Carly O'Keefe MCC First Team; Buzzell, Nicole Pirie MCC Honorable Mention.

Volleyball: Women

- Ranked in NAIA Top 25 several weeks, as high as No. 19.
- Defeated five NAIA top 25 teams, including No. 10 Park in NAIA Match of the Week.

- Currently 6-0 in MCC for third straight MCC regular season title; top seed for MCC Tourney.
- Kadie Subbert (four times), Chrissy Daggett (seven times), Kelley Nakandakari (twice), Kelley Johnson (three times), Brie Winegar MCC Athletes of the Week.
- Career milestone by Kadie Subbert (1,000 kills).
- Daggett leads nation in total assists.
- Won MCC Tournament and automatic bid to nationals.
- Daggett, Johnson, Nakandakari, Erin Roggenburg, Subbert MCC First Team; Taylor Wells MCC Honorable Mention; Tina Carter MCC Coach of Year. **GV**



The Grand View men's volleyball team was featured in a Team USA documentary by Robert Naylor that features two-time Olympic gold medalist and current U.S. Women's National Volleyball Team Head Coach Karch Kiralyi. Watch the video online in our electronic edition.

ACHIEVEMENT AWARD

baseball coach for 39 years – the longest tenure among active NAIA coaches – and owns a career record of 1,024 – 717 (.589) with the Vikings, which ranks fifth on the active coaching wins list. He is one of 15 NAIA coaches to record more than 1,000 victories. Yacinich led the Vikings to three NAIA World Series appearances, three NAIA Baseball Championship Opening Rounds, seven Midwest Collegiate Conference Championships and eight District 15 crowns. He is a member of the NAIA Baseball Hall of Fame, ABCA Hall of

Fame, Grand View Hall of Fame, and the Iowa High School Baseball Coaches Association Hall of Fame.

In addition to his coaching duties, Yacinich devoted his time throughout all aspects of NAIA baseball. Peaking as NAIA-BCA President in 2011-12, Yacinich has been an officer and served on many NAIA baseball committees. He has been a member of the NAIA World Series Games Committee, while also serving as the 1992-95 events host.

"I've had the pleasure to work with Lou in many capacities and have

developed a great respect for him as a person and a coach," Troy Plummer, GV director of athletics, said. "He works to uphold the integrity of the game and is uncompromising in his values. He impresses upon his athletes the impact that participating in baseball can have on their development as young men. It's never about winning or losing with Lou; it's about having a positive impact on his players and helping them develop into productive citizens in the community." **GV**

NATIONAL ALUMNI COUNCIL

It's very exciting to see the changes happening on campus right now. When I come back to visit, I can't believe the opportunities, luxuries, and beautiful facilities students have access to. Even though GV has grown and will continue to do so, I still get the same feelings of comfort and support that drew me to the college in the first place.

In 1994, Grand View welcomed me and provided opportunities to do things I never thought possible. I envisioned college to be somewhat lonely and confusing, but when I visited campus I knew this was the place for me. My professors, peers, and the staff became my second-family and my college dorm room truly became home. At that time, the campus didn't have a place to buy gourmet coffee or fresh bagels, top-notch educational facilities, or a state-of-the-art athletic and fitness facility. We did, however, have a simple grill where the sour cream fries could make any day better, an older gym where you could burn off calories on some pretty dated equipment, and campus was small enough that you knew just about everyone. Those days were simple, yet memorable, and will forever hold a special place in my heart.

GV introduced me to my husband of 15 years and several friends that I cannot imagine living life without. I also found my love for writing and my leadership skills. How many college students can tell you ghost stories about Old Main, say they painted a rock in the middle of the night, or that their Homecoming game was soccer and not football?

As a proud alumna, I cannot help but get a little giddy as all of these new structures and student activities turn GV into a work of art. GV may look dramatically different on the surface, but those of us who love this university know that deep down nothing has changed at all.

– Jennifer (Walker '98) Downe

1948 & 1949

INGER JENSEN '49 and **WIL LARSEN '48** met at Grand View in 1947. They celebrated their 63rd anniversary in September at home in Santa Rosa, Calif.

1983

JERRY J. JENKINS JR. '83 qualified as a Farmer's Insurance "Toppers Club" agent, recognizing his superior overall performance on behalf of Farmers Insurance and his customers.

1987

MARLA (BOICOURT '87) HANOVER is the communications and social media manager for Kansas City Sports Commission & Foundation, a privately funded nonprofit. Hanover writes press releases and feature articles for the organization's marathon website, as well as working with the media on event days, and managing six social media accounts.

1990

SUSIE (FERNANDEZ '90) and **JEFF RIDER '90** expanded their freelance graphic design business, which now

includes Spanish translation, proofreading and editing, and renamed the business Tuyo Print Plus.

LESLIE SUFFICOOL-MALCOM '90 is president of the Iowa Affiliate of the Susan G. Komen organization.

1994

DAVID AHNTHOLZ '94 married Tracy Boulian July 27 in Lake Forest, Calif. The couple resides in San Juan Capistrano, Calif., and own a commercial photography and video production company.

1996

LAURA HIDLEBAUGH '96 is the English language learning and literacy coordinator for Hawkeye Community College in Waterloo, Iowa.

1998

ANTHONY LUCIA '98 was featured in USA Today for his recreation of popular female comic book characters in a pinup style.

2001

MELISSA GARRETT '01 accepted a

2013 ALUMNI AWARD RECIPIENTS

As a part of the 2013 Homecoming events, GV proudly honored five alumni for their achievements and successes since their time at Grand View.

MARK WEST '81 was inducted into the Grand View Athletic Hall of Fame. West, who played basketball for Coach Dave Sisam, was the only GV player to play in the regional finals in both the Junior College and NAIA conferences. As one of 17 players to score more than 1,500 points and grab more than 1,000 rebounds, West was also inducted into the Southeast Polk Hall of Honor

and will be inducted into the Iowa High School Athletic Association Hall of Fame in March.

The Distinguished Alumni Award was presented to **MARK MARTURELLO '82**. Marturello is a decorated illustrator for the Des Moines Register. He earned several notable awards during his time in the industry, including 2008 Illustrator of the Year from the National Cartoonists Society Newspaper.

CAROL CHRISTIANSEN '55 received the 2013 Sally Cartwright Volunteer Award. Christiansen was a long-time

promotion at Norcraft Companies/Kitchen & Bath Ideas as a sales/designer. She is also finishing her first four-year term as a city councilwoman for the City of Pleasant Hill, and just became a board member for Beacon of Life.

2002

DR. KEM SAICHAIE '02 is the director of educational technology for the Center for Teaching and Faculty Development at the University of Massachusetts - Amherst.

2003

BROOKE RICHARDSON '03 is the regional director for American Security and Investigation in Madison, Wisc.

2008

CARLY THOMPSON '08 & '13, former Grand View transfer admissions counselor, took a new position as a Grand View academic advisor.

2009

ANDREW DAVIS '09 placed second in the Black and White Things and Still Life

class in the Iowa State Fair Photography Salon. He earned an honorable mention in the Color Animals, Insects and Wildlife section.

PAT HOBERG '09 was selected as the home-plate umpire for the Futures Game at Citi Field. The honor also came with the designation of working the Home Run Derby. He was also promoted to triple-A and assigned to the Pacific Coast League.

ROXANA (CHAVARRIA '09) SIXTOES was married July 27. She and her husband reside in Grimes, Iowa.

2013

BRIAN BENNETT '13, fleet manager of the City of Des Moines and a graduate of Grand View's Master of Innovative Leadership, participated at the Midwest Academy of Management conference in October in Milwaukee, Wis. Bennett presented a paper – in collaboration with Dr. Alec Zama, GV associate professor of business administration – titled, Organizational Structure and Strategy Analysis of the Fleet Functions of a Mid-size Midwestern City.

AMANDA JONES '13 joined the Grand View admissions staff. Her recruiting responsibilities include East High, other local schools, northwest Iowa, and Texas.

Future Vikings

LINDA MAROVETS '12 and her husband,



Eric, a son, Spencer Jay, born June 12, 8 lbs 1 oz, 20.5 inches long. Spencer joins big brothers Carter and Gavin.



NEIL OLSON '98 and his wife, Cynthia, a son, Bennett James, born September 25, 9 lbs 1 oz, 20.5 inches long.

TONYA (HALSTEAD '03) and MAXIMO PATRICK '03, a daughter, Chloe Makenna, born August 26, 8 lbs 4 oz, 19 inches long. Chloe joins big sister, Amya.

In Memoriam

EDITH (KRANTZ MOSBAEK) KILGREN '42 passed away April 8. She was the wife of **Ove Kilgren '37**; mother of **Eileen (Kilgren) Bergman '65**, **Erick Kilgren '67**,



MARK WEST '81
Athletic Hall of Fame
Basketball



MARK MARTURELLO '82
Distinguished
Alumni Award



CAROL CHRISTIANSEN '55
Sally Cartwright Volunteer
Service Award



ALICE (OLSEN '60) MIKEL
Danish Heritage
Preservation Award



DAN MIKEL '60
Danish Heritage
Preservation Award

member of the GV National Alumni Council and remains active with the St. Mark Lutheran Church, the Danish Brotherhood and Sisterhoods, and the governor's advisory council for brain injury.

The Danish Heritage Preservation Award was presented to **ALICE (OLSEN '60) AND DAN MIKEL '60**. The Mikel's have presented at the Danebod Folk Meeting and are devoted participants

in the Farstrup-Mortensen Lectures, the Danebod Folk Camp, the Danish Immigrant Museum, the Danish American Center, and the Danish American Heritage Society. **GV**

Neil Kilgren '70, and Roger Kjelgren '73; sister of Lesley (Krantz) Dalto '40 and Glenn Krantz '48; sister-in-law of Marian (Rasmussen) Krantz '47, Anne (Kilgren) Bryant '35, Herdis (Kilgren) Witte '46 and Valborg (Kilgren) Hansen '47.

LEILA M. (LAURITZEN '43) PATCHETT passed away September 12.

ELIN (HOLST '44) STUB passed away January 23. She is survived by her husband, Dr. Holger Stub '41.

JOHN THIEL '48 passed away.

ESTER M. (BOLLESEN '49) WESTLING passed away August 24. Her husband and two of her children survive her; two of her siblings are alumni: Ellen U. (Bollesen '45) Juhl, and Leif Bollesen '53.

ROBERT R. RYDELL '50 passed away July 7.

WES STUECKRATH '57 passed away July 17. His son, Michael Stueckrath '80, is a Grand View alumnus.

JOSEPH ARTHUR LONGO '58 passed away July 22.

DAGMAR (EVE '58) PETRIZZO passed away May 25.

Giving to Grand View MADE EASY!

Did you know you can give online to Grand View?

Many of us have discovered the convenience and security of shopping, paying bills, and even trading stock online. Grand View also offers that convenience with online giving. Using our online giving form, you can securely make a pledge, make a payment on an existing pledge, make a gift using your credit or debit card, or electronically transfer funds from your checking account.

Please visit www.giving.grandview.edu > Make an online gift, today!



ERIC HEIBERG '59 passed away March 18 from complications with muscular dystrophy.

ROGER WOOD '59 passed away in June.

LARRY R. WAYCHOFF '60 passed away August 28.

JERRY H. HASSEL '66 passed away August 26.

PATRICIA SUSAN (HOWE '79) DULANEY passed away July 21.


JOSEPH P. MELCHER '81 passed away September 7.

SANDREA L. (PAVLIK '83) STEARNS passed away September 12.

CHARLES L. SANDERS '86 passed away July 25.

CATHERINE EDMONDSON-SMITH '93 passed away September 30.

BONNIE LAIRD '97 passed away.

Retired nursing faculty member WINIFRED VAN OEL passed away July 24. Her son Rick Van Oel '82 survives her. 

WHAT'S NEW WITH YOU?

Something new in your life? We'd like to share your news in the GV Magazine Alumni News. Send your information to GV Magazine, Lacie Sibley, 1200 Grandview Avenue, Des Moines, Iowa 50316 or email lsibley@grandview.edu.

Full name _____ Maiden name _____ Last year at GV _____
 Spouse full name _____ Maiden name _____ Last year at GV _____
 Street address _____
 City _____ State _____ Zip _____
 Email _____ Phone _____

Please put a check by the news you want to share. New job Promotion Retirement Achievement Marriage Birth/Adoption Death

Photos are welcome and will be used on a space-available basis.

Details _____

Please send GV magazine in the following format: Electronic (Please include email address above.) Print



2013 GRAND VIEW HOMECOMING SEPTEMBER 27-29

SAVE THE DATE!
HOMECOMING 2014
OCTOBER 3-5, 2014



ALUMNI, STUDENTS, parents and friends were invited to campus for Homecoming festivities September 27-29.

The annual celebration began Friday morning with a continental breakfast and the opening Alumni College session. Afterward, guests were invited on a campus tour featuring the recent additions and renovations. The afternoon began with lunch in Knudsen Hall followed by another Alumni College session. Guests rounded out the afternoon by attending a class, enjoying their 50-year class reunion (class of 1963), and a songfest with the GV choir.

Friday evening featured the President's Club Dinner at the Hilton Garden Inn in Johnston. During dinner, an alumna was inducted into the Athletic Hall of Fame and four others received alumni awards. (Alumni award winners are recognized on pages 20-21.)

Saturday morning kicked off the 21st annual Viking 5K and Kid Trot, and the annual alumni baseball and women's volleyball games. Other highlights included an open house featuring Elings Science Hall renovations and Viking Theater facelift. Despite a few rain drops, alumni and friends were invited to a complimentary tailgate at Williams Stadium before the football kickoff against St. Francis.

The GV Choir and Instrumental Ensemble performed during the Sunday worship service at Luther Memorial Church. Guests were invited to the fellowship hall for brunch. The alumni softball game at the Luhrs Athletic Complex – a new addition to the Homecoming festivities – rounded out the weekend. A few weeks after Homecoming weekend, the men's and women's soccer teams hosted another year of successful alumni games. **GV**



From top: Viking 5k; Men's soccer alumni game; Alumni tailgate; Softball alumni game; President's Club dinner; Aebleskive experience. PHOTOS: LINDSAY MONTGOMERY '14, ANGELA PADILLA '09, MICHELLE PRANGE '92



Watch highlights from the football team's Homecoming win over St. Francis of Illinois.



honor roll of

“How long have you been at Grand View?” It’s a common question posed to me from those I have known for many years as well as someone I am meeting for the first time. My response of thirteen years usually elicits a tone of surprise. In today’s world, thirteen years is generally looked upon as a long time. And while it is a long time in my life, it’s only 11% in the rich history of Grand View.

Over the summer, we put together a map illustrating all the improvements that have occurred on campus since President Henning arrived in 2000. It’s a great pictorial of how Grand View has changed in nearly every area of campus. Much of that change is directly attributed to the generous support of our alumni and friends. We began with the Luhrs Athletic Complex and the Johnson Wellness Center, which led to more student housing, academic space improvements, more scholarships, a larger endowment, a master’s program, a jump in enrollment, and, most recently, the Rasmussen Center and Grand Central Plaza.

All of these improvements have enhanced the student experience, enabling more graduates to make a difference in our communities. The donors listed on the following pages can take pride in knowing their investment is making a difference, too. On behalf of the faculty, staff and students, I thank you for your continued support and for helping us keep Grand View moving forward.



Bill Burma
Vice President for Advancement

CLASS OF 1937

President's Club

Ruth Jensen '37 *

CLASS OF 1939

President's Club

Albert V. Ravenholt '39 *

Century Club

Arild E. '39 and Margaret Nielsen

CLASS OF 1940

President's Club

Delores (Holmgaard) '40) Jespersen

CLASS OF 1941

Contributors

Holger R. Stub '41

CLASS OF 1942

Dean's Club

Fylla S. (Peterson) '42) Kildegaard *

Century Club

Edith M. (Krantz) '42) Kilgren

CLASS OF 1943

NFS Grundtvig Society

Willard R. '40 * and Arlene H. (Holmes) '43) Garred

Century Club

Carma M. (Andreasen) '43) and Donald T. Hansen

Leila M. (Lauritzen) '43) Patchett

Contributors

Edna (Jensen) '43) Swihart

CLASS OF 1944

Contributors

Ida M. (Wolf) '44) Decker

CLASS OF 1945

Century Club

Ellen Utoft (Bollesen) '45) Juhl

Contributors

Ruth S. (Sutherland) '45) Morrison

CLASS OF 1946

NFS Grundtvig Society

Esther Marie (Jensen) '46) Rossman

Contributors

Mary O. (Olsen) '46) Riber

CLASS OF 1947

President's Club

Alice C. (Olsen) '47) Humphrey

NFS Grundtvig Society

Ellen M. (Jensen) '47) Nielsen

Century Club

Karen (Torp) '47) and Everett Cooper

Iver L. '47 and Lis T. Jorgensen

Marilynn (Nelson) '47) and Eugene Paulson

Theodore J. Thuesen '47

Contributors

Johanne (Johansen) '47) and Thorvald '46) Hansen

Paul S. '47 and Joann Jorgensen

Selma K. (Kildegaard) '47) Sloth

CLASS OF 1948

President's Club

Inger (Jensen) '49) and Wilmer N. '48) Larsen

Donald S. '48 and Alice Petersen

Gloria (Mortensen) '48) Steberl

Dean's Club

Peder E. '48* and Wanda Buck

Century Club

Alice (Norberg) '48) Nichols

Barbara M. Handrup '48

Contributors

Dorothy (Woodruff) '48) Da Shiell

CLASS OF 1949

President's Club

Paul E. '49 and Shirley A. (Svendsen) '49) Christiansen

NFS Grundtvig Society

Marie K. (Paulsen) '49) and Neil T. '49) Gribskov

Beverly M. (Nielsen) '49) and Erving '49) Jensen

Earl W. '49 and Jean Louise Sutton

Century Club

O.V. (Al) '49 and Eileen Nielsen

William W. '49 and Beverly Nielsen

Earle S. Swanson '49

Contributors

Glenn '49 and Arlene Hansen

Harlan '49 and Joan E. Thuesen

CLASS OF 1950

President's Club

Nancy M. (Peterson) '50) and Warren W. Rasmussen

Dean's Club

Elsa M. (Torp) '50) and Barry Spiegel

Century Club

Wendell J. '50 and Barbara * Burbank

Contributors

Joy (Rasmussen) '50) and Elmer C. * '49) Jacobsen

CLASS OF 1951

President's Club

Phillip D. '51 and Peggy A. Ehm

David L. '51 and Arlene F. '71) Sisam

Dean's Club

Astrid Ravenholt '51

NFS Grundtvig Society

Robert L. '50 and Karma Jean (Jorgensen) '51) Nilsen

GIVING CLUB KEY President's Club, \$1,000 and above ■ Dean's Club, \$500-\$999 ■ NFS Grundtvig Society, \$250-\$499 ■ Century Club, \$100-\$249

donors

Agnes E. (Ravenholt '51) Nussle
Century Club

Sine N. (Nielsen '51) and
Leif M. '51 Duus
James C. '51 and Joann
Walters

Contributors

Justin L. '51 and LaVonne
Beeson
Grace (Hansen '51) and Robert
Hemstreet
Ruth Kjaer '51
Donald T. '51 and Musa
Stielow

CLASS OF 1952

President's Club

Robert D. '52 and Juanita
Jacobsen

Century Club

Margaret L. (Larsen '52) Mills
Ruth M. (Thalacker '52) and
Roald A. Nelson
Ernest W. Nielsen '52

Contributors

Dorothy M. (Miller '52) and
Frank Beck
Harriet K. (Holm '52) Hansen
Solvejg B. (Egede '52) and
Robert C. Hedlund
Marie A. (Andersen '52)
Hovland
William R. and Virginia
(Anderson '52) Jacobsen

CLASS OF 1953

Century Club

June M. (Jurgens '53) and
Alton C. Due
Edward S. Esbeck '53 –
In Memory of
Gudrun Soe Esbeck
Dennis R. '53 and (Donna M.
Andersen '54 *) Koch

Contributors

Frances R. McCorkle '53
Goldie (Mohsen '53) and
Curt * Sorensen
John '53 and Anita Varme

CLASS OF 1954

President's Club

Ethel (Kjaer '54) and Ed Barker
Elaine J. (Nelson '54) and
Louis P. '54 Bredeky
Egon K. '54 and Shirley
Ellgaard

Richard G. '53 and Marilyn O.
(Hansen '54) Kramme

NFS Grundtvig Society

Curtis Dale Jacobsen '54
Lowell B. '54 and Marilyn
Kramme

Century Club

Arlan T. '54 and Carol
Andersen
Carol (Thuesen '54) and
Gordon DeYoung
Don C. '54 and Barbara Olsen

Contributors

Esther M. (Laursen '54) and
Lowell '48 Haahr
Lila Larson '54
Gerald D. '54 and Eleanor
Schaudt

CLASS OF 1955

President's Club

Bobbie M. (Sondergaard '55)
Loverink

Dean's Club

Edwin D. Andersen '55

Century Club

Patricia L. (Nyhus '55) and
Max Grassfield
Carl C. Hansen '55
Harald N. '55 and Carol Ann
(Beyer '59) Sorensen

CLASS OF 1956

President's Club

William W. '56 and Margaret
Frey
Jean M. Schmidt '56

Dean's Club

N. James '56 and Edna Dam
Tom '56 and Mary Sheldahl

NFS Grundtvig Society

Karen (Strandskov '56) and
Tony Bell
Sylvia Mae (Larsen '56) and
Robert Timmler

Contributors

Harvey J. '56 and Carol A.
(Wandling '92) Andersen
Marie M. (Petersen '56) and
Darold Bray
Ralf '56 and Inga Hoifeldt

CLASS OF 1957

President's Club

John E. '57 and Joan Cisna
Tom '57 and Evelyn Fisher
Richard N. '57 and Glenda
(Pickett '57) Jessen

Sonja Knudsen '57
Sandra K. (Jensen '57)
Rasmussen

Janet M. Thuesen '57

NFS Grundtvig Society

Richard M. '57 and Karen R.
(Sorensen '57) Simpson

Century Club

Ronald P. '57 and Melvie
Maigaard
Margot (Christiansen '57) and
Edmund G. Russell

Contributors

Larry '57 and Susan J. Scarpino
Janice L. (Beyer '57) and
Daniel R. Vander Voort

CLASS OF 1958

President's Club

Hans J. Clausen '58
Janet M. Jensen '58
Robert L. '58 and Joanne
Mahaffey
Mark S. '58 and Lorna K.
(Fisher '61) Nussle

NFS Grundtvig Society

Dale A. '57 and Betty J.
(Sondergaard '58) Johnson

Century Club

Jerry W. '58 and Carole Hall
Harold M. '58 and Carole A.
(Anderson '58) Olsen
Marsha J. (Parrott '58) and
H. Wayne Wheeldon

Contributors

David R. '58 and Shirley Haner
Jeanette M. La Barbera '58
Sandra M. (Johnson '58)
Linford

Patricia K. (Myers '58) and
Leland A. Love

Eva M. '58 and Terence J.
Nelson

Gerald R. Schartner '58

CLASS OF 1959

President's Club

William E. '58 and Marilyn L.
(Andersen '59) Gift
Donald L. '59 and Sue Ann
Hansen

Wayne Hart Madsen '59
Leland E. '59 and Virginia K.
Molgaard

Dean's Club

Ivan G. '59 and Sheryl L. Kerr

Century Club

Mark A. '59 and Kalley G.
Johnson

Lois J. (Madsen '59) and
Lowell A. Lueck

Donald L. '59 and Martha
Newell

Keith M. '59 and Gail S. Sweet

Contributors

Tove P. Jespersen '59
Clarence E. Lamoureux '59

Virgil '59 and Mary Ann Larsen
Elaine C. Lundquist '59

CLASS OF 1960

President's Club

Daniel P. '60 and Alice V.
(Olsen '60) Mikel

NFS Grundtvig Society

Margaret (Madsen '59) and
Vernon A. '60 Johnson

Century Club

Joy M. Ibsen '60 and Don Lenef

Contributors

Larry B. Christensen '60
Kathrine A. (Madsen '60) Clark
William J. Hermann '60
O. Elizabeth (Jensen '60) Ibsen
Richard Petersen '60
Larry R. Waychoff '60

CLASS OF 1961

President's Club

Ralph J. '61 and Lou Ann
(Rasmussen '61) Jensen
Janet L. (Gersib '61) and
Paul Kramme

Lou '61 and Judy
(Denning '60) Yacinich

Dean's Club

Ralph D. '61 and Mary Jo
Andersen

Joseph E. '61 and
Jennie V. Clay

Eric C. '60 and Ginger L.
(Olson '61) Ketelsen

Richard F. Sorensen '61
Gary T. '61 and Patsy A.
Vande Venter

Century Club

Gordon F. '61 and Lois
(Knudsen '61) Lund

Contributors

Patricia A. (Carlson '61) and
Donald W. Armington
Kenneth W. '58 and Ellen M.
(Ellgaard '61) Paulsen

Nancy Lee R. Wright '61

CLASS OF 1962

Century Club

David L. Bradbury '62
Janice E. (Pender '62) and
John Q. A. '62 Mattern

Donna D. (Jespersen '62) and
Gary D. Simmer

Contributors

Clifford D. Ballard '62
Larry A. '62 and Mary Jo
(Ruckman '64) Beck
Diane Marion (Sorensen '62)
and David H. Brown

Rudy G. '62 and L. Jean Roe

CLASS OF 1963

Dean's Club

Larry D. '63 and Lori G.
Hartsook

Century Club

Judy L. (Bennett '63) and
Thomas Leffler

Richard D. Finney '63
Jerry D. '63 and Julie Gates

Kirk W. Roebken '63

Glenn L. '63 and Bev Smith

Contributors

Albert A. '63 and Susan
Bodaski
Mark A. '63 and Janet Boyd
Theo R. (Joplin '63) and
Lavoy G. Haage

Beverly A. (Burgess '63)
Schreiner

Joel P. '63 and Judy Whipple

CLASS OF 1964

Dean's Club

Ronald W. '64 and Donna
Mohr

Century Club

Anita E. Clark '64

Contributors

Kenny L. Boatwright '64
Carole D. (Beckman '64) Boon
Frank '64 and Joyce Kaiser
Inez E. (Busse '64) and
Bruce S. Norgard

Lonnie K. Wildrick '64

CLASS OF 1965

President's Club

Josiah M. Conkling '65
Arlen R. '64 and Asta
(Petersen '65) Twedt

Century Club

Laura E. (Garred '65) and
William J. Hemmes
James J. Raymond '65
Janice L. (De Vault '65) and
Bradford L. Santos

M. Alan '65 and Camille E.
(Larson '66) Snedden

Hubert J. '65 and Peggy A.
Vespestad

Contributors

Neil H. '65 and Diane M.
Andersen

Gary Russell Fierce '65
Claudia V. (Voigt '65) and
Paul C. Olson

Janice Pohl '65 –
In Memory of Enok *
& Nanna * Mortensen

Nancy E. (Chittenden '65)
Schweitzer

Virden E. Von Qualen '65

CLASS OF 1966

President's Club

Suzette G. (Stephens '66)
Jensen

NFS Grundtvig Society

Robert E. '66 and Sharon
Chittenden

Norma R. (Christiansen '66)
Horswell

Century Club

John C. '66 and Colleen
Burgeson

Contributors, \$1-\$99 + Indicates ongoing gifts from estates of deceased donors or from individuals who died during the fiscal year. * Indicates deceased.

honor roll of donors

Jeri L. (Krouse '66) and
Ronald L. '66 Mellgren

Contributors

Fred L. '66 and Mary A.
(Low '67) Baedke
Gary C. Battles '66
Andrew '66 and Louise
Christensen
Mary K. (Haiferty '66) and
Doug Hanson
Susan G. (Cedarstrom '66)
and Ronald R. James
Eugene D. McCoy '66
Doran B. Morford '66
Joan J. (Niemeyer '66) and
John Porter

CLASS OF 1967

President's Club

Bill '67 and Linda Weidmaier

Dean's Club

Betty Ann (Witzel '67) and
Michael Dall

Contributors

Karen E. (Barnhill '67) Ahlman
David C. Fremming '67
Vicki L. (Hougham '67) and
Gary McKibbin
Gary W. Nichols '67
Karen L. (Mc Gahan '67) and
Larry R. Rainwater
James L. '67 and Elizabeth
"Betsie" A. (Gooch '67)
Wheeler
George K. '67 and Andrie
Young

CLASS OF 1968

NFS Grundtvig Society

David A. '68 and Myrtle M.
Howard

Century Club

Linda K. (Rieken '68) and
David A. Allison
Jean M. (Farstrup '68) Eller
Trudy M. (Hurley '68) and
Joseph Hurley
Nick '68 and Faira K.
Knezevich
Tim D. '68 and Sherry
Vuagniaux

Contributors

Karen A. (Carlson '68) and
Richard Bason
William C. '68 and Cleoda M.
Mikesch

Bruce A. '68 and Katy Ray

CLASS OF 1969

President's Club

Wayne D. Jensen '69
Bonnie J. Ruggless '69
Jeffrey L. '69 and Sherry
Simpson
Harold B. '69 and Anne
Wheeler

Century Club

Mary Jo (Sorensen '69) and
Robert D. Frazier

Contributors

Marcia L. (Boal '69) and
Mark I. Cohan
Sidney H. '69 and Rebecca
Gimre
Mark R. '69 and Ronda Logli
George A. '69 and Patricia K.
Patrick
Richard R. '69 and Joann
Shepard

CLASS OF 1970

President's Club

C. Mike '70 and Karen J.
(Sorensen '70) Brodie
Carey G. '70 and Ann M.
(Von Gillern '70) Jury

Contributors

Kenneth '70 and Rita
Birkenholtz
Timothy R. '70 and Kathleen
Harrington
Marilyn J. (Maddy '70) and
Dwayne Kohler
Robert W. '70 and Sandra
Spencer
Janet L. Walker '70
Thomas C. '70 and Joyce
Westby

CLASS OF 1971

Century Club

Richard K. '71 and Marsha M.

Francisco
Douglas A. Jensen '71

Contributors

Anne M. (Kouri '71) Campbell
Karen M. (Crowell '71) and
LeRoy Chatfield
Robert W. '71 and Michelle L.
Eldridge
Carol M. (Jessen '71) and
Ronald T. Kellogg
Mary Lou N. (Town '71) and
Alfred J. Spurgeon

Larry R. Willis '71

CLASS OF 1972

President's Club

Richard W. '72 and Linda Hurd
Gary E. '72 and Ginger Palmer

Dean's Club

Kathy M. (Sorensen '72) and
Duncan H. Meldrum

Century Club

Frank W. Perkins '72

Contributors

Robert P. Cox '72
Rebecca Muselman '72
Fred H. '72 and Theresa M.
Redhead

Dean A. Schuler '72

CLASS OF 1973

NFS Grundtvig Society

John R. '73 and Gerry A.
(Tjelmeland '73) Jones
Keith D. '73 and M. Kate
(Allen '73) Paine

Century Club

Cynthia (Dowie '73) and
Mike Elgin
Jean M. '73 and Fred Drew
Sally E. (Whitehorn '73) Dunan

CLASS OF 1974

NFS Grundtvig Society

Paul D. '74 and Kaylene L.
Ruby

Century Club

Bradley A. '74 and Lori Long

Contributors

Julie Ann (Abrams '74)
Hughes
Gloria S. (Johnson '74) and
Stephen Kroece
Joan M. Mahaffey '74
Michael L. '74 and Marsha D.
McCleary

CLASS OF 1975

NFS Grundtvig Society

Raymon E. '75 and Connie
Darling

Century Club

Gary '75 and Lynette Moden

Contributors

James E. '75 and Mimi Binkard

CLASS OF 1976

President's Club

Tony C. '76 and Roxanne
Wilson

NFS Grundtvig Society

Diane L. (Gill '76) and Lee L.
Doidge
David B. '76 and Mary R. '76
Russell

Contributors

David C. Brotherson '76
Don A. Corrigan '76
Nanette R. Johnson '76
Jeffrey M. Pauley '76
Keith D. '76 and Sara A.
Van Drew

Cheryl D. (Howar '76)
VanWeelden

CLASS OF 1977

President's Club

Mark P. Glowacki '77 and
Jennie Balcom

Priscilla R. (Rossman '77)
Schwartz

Century Club

Jacqueline S. (Barton '77) and
Cecil L. Goettsch

Marilyn K. '77 and Rowe

Carl D. '77 and Audrey Shafer

Contributors

Diane E. (Barclay '77) and
Kevin Ballard
Connie L. (Gregoire '77) and
Wendell J. '66 Saunders

CLASS OF 1978

President's Club

Steven F. '69 and Nancy
(Lavender '78) Bobenhouse

Jean E. (Wolf '78) and
Thomas J. Logan

NFS Grundtvig Society

Paul H. Rowe '78

Century Club

M. Dan Collins '78

Contributors

Sandra L. Knudsen '78
Ernest R. Nielsen '78
David R. '78 and Deb Peterson
Ralph '70 and Donna J. '78
Rieck

James L. Scheidecker '78

Elizabeth A. (Murphy '78)
Schmidt

Sandra J. Smith '78

Debbie M. Vandehaar-Arens '78
and Daniel Arens

CLASS OF 1979

Century Club

Gregory L. '79 and Mary E.
Dockum

Marianne A. (Fischer '79) and
Robert J. Saxton

Contributors

Morris F. '79 and Lynne A.
Murphy
Cynthia S. (Queen '79) and
Luie E. Weikum

Barbara A. (Connor '79) and
Glen Wells

CLASS OF 1980

Century Club

Judy A. (Juhl '80) and
William H. Ellerman

Valerie G. P. (Peterson '80) and
Randy L. Howard

Contributors

Kim I. (Mc Farland '80) and
David F. Butler

Rustin T. '80 and Mary
Davenport

Elizabeth A. (Cardamon '80)
and Tim G. '80 Houge

Jeri L. Jaquis '80 and M.T.
Waddell

Robert W. Jewett '80

Sheila A. Mackel '80

Susan L. (Morse '80) and
Pat J. Logan

Marcia S. Pitcock '80

Mary L. '80 and Gary Weaver

CLASS OF 1981

Century Club

Douglas A. Stark '81

Kelly L. '81 and David VanGorp

Contributors

Mildred J. (Palladino '81) and
Ubbo Agena

Janice (Marshall '81) and
James Doggett

Jean L. McCrea '81

CLASS OF 1982

President's Club

Robert J. '82 and Amy Tursi

Century Club

Kendall W. '82 and Suzanne M.
(Turnquist '84) Hicks

Brenda L. Hoshaw '82

Contributors

John R. '82 and Joleen Kile
Susan E. (Fuhrman '82) Linde

Elizabeth A. Palmer '82

Charlann O. (Knight '82) and
Berry E. Reeves

CLASS OF 1983

President's Club

Edward C. '83 and Bridget
Bleimehl IV

Century Club

Mary J. (Koets '83) and
Chuck Schira

Contributors

Daryl D. '83 and Mary Frey
Michael D. Kellner '83

Lance B. '83 and Bonnie Leslie

Bernadette G. (Gioffredi '83)
and Thomas R. Loken

Elizabeth C. (Fath '83) and
Thomas P. Morse

Mary L. (Staples '83) and
Michael H. Said

CLASS OF 1984

President's Club

Randy J. '84 and Jill Sackett

Marilyn (Munson '84) and
Bob Warling

Century Club

Julie B. (Walters '84) and
Marty Bell

Steven D. '84 and Tracy S.
(Schartner '87) DeVenney

Contributors

Anonymous

Paul F. '84 and Phyllis Breddin
Thomas W. '84 and Linda Cross

Michelle L. (Flanders '84) and
Mark Finley

Lori A. (Casper '84) and
Ronald Liston

CLASS OF 1985

President's Club

Anthony A. Onuigbo '85

Mark T. '81 and Anne M.
(Nielsen '85) West

Lewis A. Yacinich '85

NFS Grundtvig Society

Bruce W. '85 and Vickie L.
(Lenihan '86) Clark

April J. (Brun '85) and John
Marmon

Contributors

Joan V. Anderson '85

Barbara C. (Cook '85) and
Larry L. Bybee

Jacqueline H. (Hart '85) and
Richard S. Kelly

Patrick W. Morris '85

Kelly K. Walker '85

Randy L. '85 and Jayne Welch

CLASS OF 1986

President's Club

Karen A. (Hoskins '86) Spahr

Chadwin J. Wagener '86

Century Club

Jody L. Christiansen '86

Luanne J. Knudsen '86

Contributors

Gerard S. Amadeo '86

Lynn D. Landers-Dickinson '86

Roberta L. (Hammes '86)
Royce

Vance K. '86 and Rhonda Voss

Edward B. Wright '86

CLASS OF 1987

Century Club

Douglas J. '87 and Trudi J.
(Spear) Bauer

Diana J. (Jacobs '87) and
Philip O. Suckles

Contributors

Karen M. (Lee '87) and Roger
Fread

Kerry E. (Norrgard '87) and
Peter Norrgard-Gerhard

Michelle K. Wimmer-Sanders
'87 and Charles F. Sanders

Sarah M. Wilson '87

CLASS OF 1988

President's Club

Scott C. '88 and Julie Cirksena

Kurt E. '88 and Lynette
Rasmussen

NFS Grundtvig Society

Marla J. (Van Donselaar '88)
and Gary De Jong

Steve C. Snyder '88 and
Sandra Deyoe

T. Scott '88 and Iika
Wilgenbusch

Contributors

Brian J. '88 and Debra A. Clark

Charles K. '88 and Leslie D.
(Ross '87) Jurgensen

Andris V. '88 and Theresa Kirsis

J. Michelle L'Estrange '88

Mary D. (Wergler '88) and
David Smith

Kurt W. '88 and Kelly Whiton

Mark R. '88 and Wendy M. Zeratsky

CLASS OF 1989

President's Club

Michelle W. (Wilkinson '89) Reynolds

NFS Grundtvig Society

Kristin L. (Howes '89) and Mike Schweiger

Contributors

Ronald L. Barton '89

Debbie S. Miller '89

CLASS OF 1990

Century Club

Michael D. '90 and Eva '92 D'Aust Garcia

Gary T. '90 and Kimberly Rinehart

Leslie A. (Sufficool '90) and William D. Malcom

Contributors

Scott E. '90 and Diana Jurgensen

Greg A. Lockwood '90

JoAnn (Helland '90) and William R. Moncrief

Scott A. Sondgeroth '90

Robin A. '90 and Thomas M. Stienkamp

CLASS OF 1991

President's Club

Daniel C. Cretors '91

NFS Grundtvig Society

Tara D. (Frisk '91) Antle
Dot J. '91 Mattson-Reid and Blair Reid

Century Club

Jennifer M. (Parker '91) and Michael Olson

John M. '91 and Sherry L. Sharp

Contributors

Judith A. (Maggie '91) and Larry Brown

Michelle M. (George '91) and Dennis A. Fick

Janet M. '91 and Robert L. Pickerell

Deanna R. (Kaufman '91) and John Stacy

CLASS OF 1992

Contributors

Todd E. '92 and Sarah Bailey

Jeffery J. '92 and Andrea S. Corcoran

Patricia S. Jacob '92

Andrea K. (Peek '92) and Michael D. Mitchell

Denise D. (Acker '92) and Chad Speer

CLASS OF 1993

NFS Grundtvig Society

Javier M. '93 and Jeanna L. (Hough '95) Gutierrez

Contributors

Chris M. Barten '93

Jason C. '93 and Carrie K. Henderson

Allan J. ('93) and Rhonda Olney

Kevin J. '93 and Marci Schreck

Warren F. Young '93

CLASS OF 1994

President's Club

Peter J. '94 and Kris Kiernan

NFS Grundtvig Society

Stacy L. (Hasley '94) and Craig Stevens

Contributors

Jonathan L. Augspurger '94

James B. Erickson '94

Karen A. Fleming '94

Michael J. '94 and Shonda M. Hershberger

Jonathan L. '94 and Melissa M. Wilson

CLASS OF 1995

Dean's Club

Diane K. Schaefer Johnson '95 and William J. Schaefer

Century Club

Brian C. '95 and Tiffany J. Patterson

Contributors

John P. Davis '95

Patricia L. '95 and Kendall Kerns

Sharon L. (VanDusartz '95) and Joe Koelling

Jodi E. (Sublett '95) and Patrick Marti

Judy L. (Frohlich '95) and Mike Nissly

CLASS OF 1996

Dean's Club

Alan T. '96 and Jennifer L. (Walker '98) Downe

NFS Grundtvig Society

Kent A. '96 and Michelle L. (Mooney '96) Farver

Century Club

Scot P. Roche '96

Contributors

Lesley D. (Kellar '96) and Eric J. Coomes

CLASS OF 1997

Century Club

Robert E. '97 and Patricia Kleba

Marlana D. Schnell '97

Gregory A. '97 and Michelle Zaugg

Contributors

Bryan J. '97 and Jenyse K. '98 Belden

David B. Haddad '97

Heidi J. (Wagner '97) and Matt Pries

CLASS OF 1998

Contributors

Amy J. (Waske '98) and Kevin Bishop

Shannon R. James '98

Kimberlee A. (Sheumaker '98) and John Mortale

Neil T. '98 and Cynthia Olson

Bonnie L. (McCafferty '98) and Russ Phillips

Brian Taube '98

CLASS OF 1999

NFS Grundtvig Society

Benjamin Marconi '99

Donna J. (Everson '99) and Dan Schroeder

Contributors

Sheryl J. Babb '99

Kristie K. (Jensen '99) and Shawn Neddermeyer

Jarret A. Ruddy '99

Andrea J. Schaben '99

CLASS OF 2000

President's Club

Kurt R. '00 and Kristi A. Bogseth

Dean's Club

Keith J. '00 and Charla Kudej

Century Club

Scott R. Coolong '00

Contributors

Kelly A. (DeVries '00) and Keith M. '00 Daniel

Alicia S. Dougherty '00

Lisa A. (Ludwig '00) and Michael A. '02 Hopkins

Gary M. '00 and Patsy Linnevold

Louis R. Metcalf '00

CLASS OF 2001

President's Club

Kathleen J. (Propst '01) and Keith Gunzenhauser

Dean's Club

David D. '01 and Melissa J. (Zingale '01) Sharkey

Century Club

Christopher J. '01 and Rachel Standley

Contributors

John J. '01 and Susan Alshouse

Amy G. (Hill '01) and Douglas G. '01 Brinker

Jennifer L. Carico '01

Judith (Grau '01) Martin

George B. '01 and Jane Snodgrass

Jane M. (Sobolik '01) and Paul White

CLASS OF 2002

President's Club

Timothy T. '02 and Joanna Lowe

Contributors

Janis G. (Jurgensen '02) and Robert D. '62 Meek

Alejandro H. '02 and Vicki Piedras

Natalie R. (Kriens '02) Schrader

CLASS OF 2003

President's Club

Scott D. '03 and Amber Prickett

Century Club

Lora A. Johnson '03

Contributors

Laura L. (Ziebell '03) Baumgartner

Lorie A. (Marker '03) Cannon

Sage Evans '03 and Jon S. Wise

Karen S. (Carroll '03) Fatino

Josie L. (Stone '03) and Brandon Hainline

Carol M. (Volz '03) and Mark C. Mattes

Cassee S. Olin '03

Veronica L. (Powers '03) and Kerry White

CLASS OF 2004

Century Club

William '04 and Joanne K. Hon

Robin C. '04 and Michael Luke

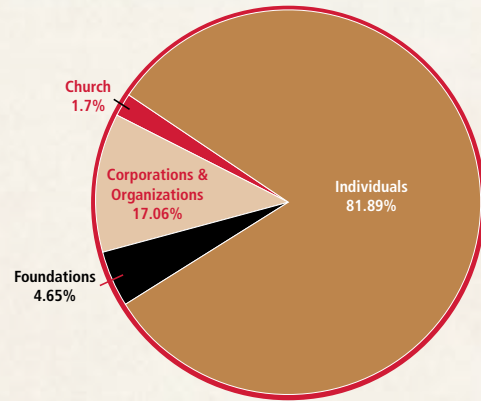
Contributors

Leigh A. (Peterson '04) Bellville

Rachel J. (Smith '04) and Michael Graham

Kevin E. '04 and Megan R. (Wissler '03) Yeager

Fiscal Year 2012-13 Contributions \$2.475 million



CLASS OF 2005

Contributors

Jan M. (Gardner '05) and Jerry Fitzsimons

Emily A. (Wiley '05) and Paul Haase

Anthony J. Leto '05

Mihneta '05 and Sejad Lisinovic

Stephanie L. (Bogseth '05) and Jeremy Sims

CLASS OF 2006

Dean's Club

John F. '06 and Julie Bantz

Century Club

Melinda M. Kuehl '06

Contributors

Avraham A. '06 and Idit Hazan

Katie J. Ostrem '06

Margaret J. Peterson '06

Kevin C. Slayton '06

Tamara R. Strachan '06

CLASS OF 2007

Contributors

Michelle M. Anderson '07

Matthew S. '07 and Robin Cramer

David C. '07 and Marni Feters

Lacie D. (Weeks '07) and Luke M. Sibley

Jeffrey J. '07 and Jeannine Vaske

CLASS OF 2008

President's Club

Doug J. Benson '08

NFS Grundtvig Society

Robert P. '08 and Heather J. (Haaland '05) Oxenford

Century Club

Robert L. Mack '08

Contributors

Rochelle A. (Cameron '08) Carver

Amy Courtney '08

Chelsie J. (Mallicoat '08) and Nate Lestina

Ann M. McGonegle '08

Laure Beth Nagle '08

Stacey L. Randeris '08

Carly J. Thompson '08

Sarah M. Tracy '08

CLASS OF 2009

Century Club

Dana M. Yonker '09

Contributors

Roxana E. Chavarria '09

Kenneth M. '09 and Rebekah Keil

Angela J. (Woody '09) Tonasket

CLASS OF 2010

President's Club

Jason G. Luedtke '10

Century Club

Chinyelu Chukwurah '10

Contributors

Elaine M. Castelle '10

Kyla A. D. (Wormley '10) and Robert M. J. '10 Knudson

Jaime L. Miller '10

Edin Vrtagic '10

CLASS OF 2011

Century Club

Steven M. Henn '11

Contributors

John P. Jones '11

Nicole M. Wells '11

CLASS OF 2012

Century Club

Spencer J. '12 and Carrie E. Sponheim

Contributors

Lindsey R. Conlin '12

Mitchell L. Johnson '12

Joshua D. Monette '12

Taylor L. Swartz '12

Michael D. Tallman '12

CLASS OF 2013

Contributors

Deborah A. Jenkins '13

Allison M. McFayden '13

Justin J. Meyers '13

Alexander G. Wesdorf '13

CURRENT STUDENTS

Taylor R. Allgeier

Brittany M. Allgood

Alexander R. Amadeo

Kelby L. Arnold

D'Autre S. Ayers

Adebayo R. Babalola

Victoria M. Baker

Dorian L. Ballentine

Cassandra E. Bass

Lauren E. Bennett

Stephanie C. Brannan

Gabrielle G. Brass

Caitlin R. Bruch

Chase P. Carlson
 Emily R. Cashman
 Christopher M. Cass
 Terrell W. Clark
 Kelanie L. Claude
 Conner D. Cole
 Brittney Courtney
 Dillan T. Crawley
 Kaitlyn G. Davis
 Ashlee R. Davison
 Alicia D. Dean
 Hunter G. Donovan
 Trevor J. Egli
 Obehi C. Ehihamenor
 Hayley E. Ellis
 Michael D. Erpelding
 Jayce D. Esslinger
 Katrena M. Fellner
 Thaianna Finestead
 Anthony M. Franc
 Brian D. Frick
 Julian A. Garrett-Pfeifer
 Paulino Gomez
 Jacob T. Grant
 Cody Green
 Heather L. Greer
 Amy L. Greving
 Miles D. Hackett
 Lindsay E. Hall
 Taylor R. Hance
 Dustin R. Harberts
 Seth Harjes
 Susan D. Heaberlin
 Megan R. Jensen
 Evan G. Johnson
 Kristin R. Johnson
 Houston A. Kelley
 Austin Kelly
 Sara L. Kerber
 Sarah B. Kriegel
 Elle L. Lacher
 Morgan K. Larrington
 Elya J. Le
 Hannah M. Loehr
 Kyler F. Ludwig
 Raven D. Luther
 Jonathan T. Macadam
 Theresa Macdonald
 AnnaLise A. Manske
 Blake J. Marchant
 Joslynn Martin
 Christian D. Mays
 Mitchell J. McPartland
 Daniel A. Paiva
 Veronica L. Payne
 Hannah M. Pickart
 Nicole A. Pirie
 Kayla M. Pitman
 Slater M. Pulkrab
 Kyle A. Putnam
 Jessie J. Rayford
 Brenden J. Redshaw
 Patrick M. Rolark
 Taylor R. Roseboom
 Allison M. Ruhland
 Rebecca R. Ruther
 Michelle R. Sadewasser
 Leah B. Scharfenberg
 Alexander R. Shrewsbury
 Maria C. Silva Trejo
 McKenzie K. Smeltzer
 Tyler P. Smith
 Hannah K. Sorsby
 Treg E. Spigner
 Kaitlyn R. Stotts

Kari K. Ticer
 Anni R. Tigges
 Jacob R. VanBesien
 Stephanie M. Venner
 Joseph C. Vercande
 Miranda K. Waechter
 Isiah A. Walters
 Nathaniel J. Webb
 Adam L. Wenck
 Nicholas E. Wenger
 Darius R. White
 Bryce D. Wignall
 Bethany F. Wilcox
 Brooke A. Zimmerman
FRIENDS
President's Club
 A.E. Easter Family Foundation
 Adventure Lighting, Inc.
 AJ Allen Mechanical
 Contractors, Inc.
 Anderson Animal Hospital
 Ankeny Aesthetic Dentistry
 Anton Nielsen Trust
 Carol Bamford
 Bankers Trust
 Debbie and Terry Barger
 Leslie D. and Vicki J. Beer
 Scott D. Bock and Melanie
 Galloway
 Bright Foundation
 Marcia H. and Thomas A.
 Brown
 Bill and Kristi Burma
 Gregory J. and Stephanie
 Burrows
 Cameron - Mitchell, Inc.
 C. Dean and Sandra Carlson
 Roy J. Carver Charitable Trust
 Central Iowa Race Corporation
 Chemorse, Ltd.
 Christian Printers
 Pamela and Christoffers
 Mary C. and Don Coffin
 Commonwealth Electric
 Company
 Confluence
 The Council of Independent
 Colleges
 James and Patty Cownie
 Danish American Heritage
 Society
 Danish Brotherhood Lodge
 No. 15
 Des Moines Orthopaedic
 Surgeons PC
 Robert S. and Pam DeWaay
 Doors, Inc.
 Joseph M. Dorgan Trust
 Kathryn and Steve Duffy
 DuPont Pioneer
 East Des Moines Chamber of
 Commerce
 EFCO Corp
 Electrical Engineering &
 Equipment Co.
 Evangelical Lutheran Church
 in America
 Farmers Mutual Hail Insurance
 Fitness Sports
 John C. Gertenrich
 Thomas and Rosemary Gibson
 Graphic Edge, Inc.
 Larry Gregory
 Brett Harman
 Scott M. and Molly Harrison

Heartland Proteins, LLC
 Hawkeye Truck Equipment
 Heartland Finishes
 Doug Heisterkamp –
 Twin Oaks Landscaping
 Nickolas J. and Dee Henderson
 Kent L. and Carole Henning
 John and Laura L.
 Hollingsworth
 Holmes Murphy & Associates
 Homesteaders Life Company
 David and Barbara Hurd
 Iowa College Foundation
 Iowa Des Moines Supply, Inc.
 Iowa Lutheran Hospital
 Auxiliary
 Iowa Scottish Rite Masonic
 Foundation
 Richard O. Jacobson
 Jason's Lawn and Tree Care
 Erna C. Jensen
 John Anton Lord Trust
 John Deere Des Moines Works
 Chuck and Jaina Johnson
 Alice Jordan *
 Robert E. Larson
 Liberty Ready Mix
 Grace E. Lohmann
 James E. and Pat Luhrs
 Luther Memorial Church
 Marsden Building Maintenance
 Meredith Corporation
 MidAmerican Energy
 National Science Foundation
 Northwestern Mutual
 Foundation
 James W. and Shelley Noyce
 Papa John's of Iowa
 John and Mary Pappajohn
 Prairie Meadows Racetrack &
 Casino
 Jay B. and Tami Prescott
 Principal Financial Group
 The Rasmussen Foundation
 The Rasmussen Group, Inc.
 Clayton L. * and Helen
 Ringenberg
 Richard Morton* Root & Ruth
 Bailey* Root Charitable Trust
 O.E. Ryen *
 Denis and Sara Schaefer
 Paul and Claudia Schickler
 Erma J. Selser
 Shiffler Associates Architects,
 PLC
 Darleen Sickert *
 Gordon J. Smith
 Snyder & Associates
 Sodexo Campus Services
 B. Joan Sorensen
 St James Lutheran Church
 State of Iowa
 State of Iowa Board of Regents
 Frances and Roger D. Stefani
 The Stelter Company
 Stew Hansen Dodge City Jeep
 Mary Elizabeth Stivers
 Ellen M. and Lawrence
 Strachota
 Subway
 Janet and William Thayer
 Thrivent Financial For
 Lutherans
 Trans Iowa Charters
 Triplett Companies

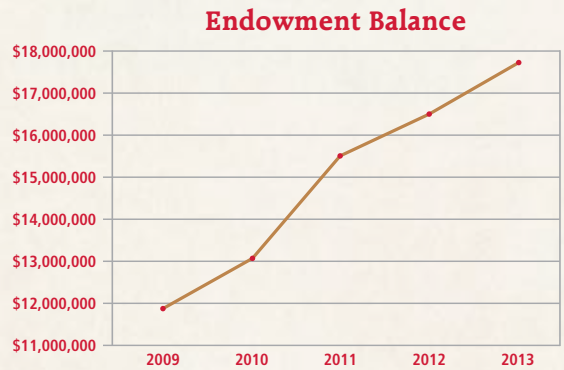
Tursi's Latin King
 UnityPoint Health –
 Des Moines
 US Bank
 USA Volleyball
 Venter Spooner, Inc.
 Adam and Kariann Voigts
 Walsh Door and Hardware
 Wellmark/BlueCross BlueShield
 of Iowa
 Wells Fargo
 Wells Fargo Community
 Support Campaign
 Wells Fargo Foundation
 Educational Matching Gift
 Program
 Dianne M. and Paul M. Werger
 Westside Football Classic
 Tim T. and Darcy A. Wheelon
 Martha A. Willits
 James H. and Sandra Windsor
 Woodman Controls Co.
 Woodman Electrical
 Contractors, Inc.
 Werner E. and Ruby R. *
 Zarnikow
Dean's Club
 Adventures in Advertising
 All Iowa Construction Services
 Craig Allison
 Athene USA
 Linda L. Brunscheen
 BSN Sports, Inc.
 Christopher A. Cantor
 Kathy L. Castleberry
 Charles Gabus Ford
 The Concrete Contracting
 Company
 EP True Chiropractic, Inc.
 Debra and Don Franzen
 William Fulbright
 Keith and Julie Fulton
 Deb and Kevin M. Gannon
 Jerry L. Gingerich
 GTG Construction
 Duane and Janaan K. Harding
 Cherie and Marlin Hill
 Vern Hunter
 Theodore M. and Susan
 Hutchison
 Jensen High Five Charitable
 Fund
 Johnson Construction
 Jeff and Kimberly Marchant
 Monsanto
 National Wrestling Coaches
 Association
 Parking Lot Specialties, LLC
 Alan and Monica Peitz
 Troy A. and Amy Plummer
 LaVerne C. and Janice E. Quass
 Elton P. and Anne S. Richards
 Gregory and Laura Salazar
 Spielman Financial
 Frank Stefani
 Triple S Shires
 Tucker Trucking, LLC
 Twin Oaks Design Build, LLC
 Valley West Inn
 West Bank
 Troy and Kelly Winegar
 Katharine M. and Ronald
 Yarnell
 Zion Lutheran Church

NFS Grundtvig Society
 Abbott Laboratories
 Edward A. Amundson
 Leann M. Stefani-Anderlik *
 and Jeff Anderlik
 Paul R. and Sandy Axness
 Baker Group
 Benjamin C. Barnes
 Boeing Company
 Ashley M. and Jay D. Bollman
 Cathy M. and Richard Brent
 Mike and Argelia Brown
 Doreen and Peter Callewaert
 John P. and Nancy Malm
 Carlson
 Tina M. and Scott Carter
 Center for Social Ministry
 Shirley J. Cloyd
 Janet Corey
 Dwight L. and Janice W.
 DuBois
 Keith A. Erhard
 Dave and Cindy Erpelding
 Vera Erpelding
 Gannett Foundation
 Good and Quick, Co.
 Greater Des Moines Bowling
 Council
 Michael J. Halder
 Joanne and Steve C. Hand
 David L. Howk
 Kelley Hubbard
 Infomax Office Systems, Inc.
 Tim and Monica Kirgan
 The Elvin and Eugenia Lerager
 Fund of the Lutheran
 Community Foundation
 Cary and Michele Loehr
 David and Tonya Mays
 Mark R. McDonough
 MDU Resources Foundation
 Monarch Foundations, Inc.
 Frank Mott
 No Lawn Left Behind, LLC
 Our Saviour's Lutheran Church
 P&A Trucking, LLC
 Brian and Amy Paiva
 Chris and Deborah
 Pullin-Van Auken
 Daniel J. Reedy
 Joel and Susan Rutz
 Jim Schuessler
 Scott H. Seeley
 Sam and Maria Shalala
 Lawrence F. and Marilyn E.
 Staples
 Star Equipment
 Tom Steinkamp
 Subway of Pella
 Tension Corporation
 Coralie Turner
 Dolores Udland
 Carolyn M. and Kenneth J.
 Wassenaar
 Wiltfang Apartments
Century Club
 American Energy Solutions
 Dennis and Karen Antolik
 Bryan Arzani
 Larry and Crystal Augustine
 Jon and Joyce Bahrenfus
 Lawrence G. and Coleen
 Baldwin
 Ryan J. Baldwin
 Rachel S. Baron

Kim Beardsley
 Mark and Melissa Becker
 Lucas A. Bennett
 Mary M. Binder
 Brad and Missy Bliss
 Michael B. Bobbitt
 Veronica Boles
 Bonita Bontrager
 M. Jane Borst
 Gene J. and Rose M. Breitbach
 Sharon L. Brindle
 Julie A. and Rogerio D. Brown
 Manzanaras
 Harold W. and Karen L. Brown
 Van and Lisa Brownlee
 Matt Brunscheen
 Robert D. and Marlene S.
 Buckley
 Michael L. and Diane Burk
 Kipp and Brenda Bush
 Lucas J. and Lindsay J. Casey
 Cellular Dimensions, LLC
 Larry L. Chase
 Michael D. Christensen
 Craig and Jane Clark
 Garth A. Cloyd
 Julie Cohn
 Peter and Mary Cownie
 Michael S. and Kristina M.
 Crawford
 Andrea Cressey
 Jeff Cunningham
 Robert E. and Susan K. Currie
 D & J Plating, Inc.
 Brenda Daigre
 Danish Sisterhood Lodge 102
 Kirk and Shiela De Covich
 Jerry and Carol Debondt
 Ammertte Deibert and Dennis
 Palezewski
 Alan W. Deike
 Robert Denner
 Cicily Dennis
 Mike and Judy Doggett
 Dean Downs
 Kelli J. Doyle
 Michele A. Dunne
 Al and Mary Dzubak
 Arnold and Nellie M. Eblen
 Ronald D. and Barbara E.
 Eckoff
 Kelsey Egli
 Richard and Trudy Egli
 Linda Espey
 Eyeowa Optical Company
 Wendy Fedler
 Brian and Donna Field
 Rick Fitch
 Michael E. and Jean Foley
 Jessica Fox
 Mae Deane Frisk
 Sebastian and Leonilda Fusco
 Carol A. Garrett
 Amy Getty and Edward Allen
 Brian and Leila Girsch
 Charles and Michelli Good
 James E. Goodloe
 Jamelyn and Von Grant
 Mark R. and Tammra J. Gray
 Dave and Karen Greer
 Judith A. and William R. Haller
 Pamela J. Hampton-Neff
 Lois J. and Wendell Harms
 Chris Hartman
 Marc Havnen

Hedrick Construction
 Kathryn and T.J. Heither
 Dennis Hoelzer
 Brian D. and Sandra J.
 Holterhaus
 Leah and Leroy Homeister
 Allen and Sara Houchins
 Ardith and Terry Housman
 Melinda Huisinga
 Lauren Hummel
 Infrastructure Engineering, Inc.
 Jodie L. Jackson
 Scott D. and Francesca C. Jaffe
 Joe's Knight Hawk
 Jan and Rodney Jolly
 Belinor T. Jones
 Kenneth S. and Mary S. Jones
 Therese M. Judge
 Donald D. Keller
 Eric R. Keller
 Doug and Pam Kellogg
 Allison C. Kelly
 Aaron C. Keyser
 Ronda L. Kirkegaard
 James A. and Jane Kunze
 Jan Labarbera
 David and Debbie Lattner
 Sheryl Leytham and Rod
 Powell
 Dennis R. and Susan L. Linder
 Denise M. Lyons
 M.J. Daly Construction Co.,
 Inc.
 Susan Mahedy-Ridgeway
 Robert Malloy
 Karen M. Manning
 Margaret R. McCullough
 Rebecca and Stephen M.
 McDonnell
 Molly K. and Walt McDowell
 John A. McTaggart
 Kent C. and Regine Mericle
 James M. and Kathy Miller
 Jerry Mitchell
 Jerry L. Monner
 Robert Mott
 Sheri Muller
 Cindy K. Nashert
 Nieman, Stone &
 McCormick, PC
 Steve and Sharon Nyquist
 Ted J. Parrish
 Melinda and Alan A. Patterson
 Ann and Rick Pauley
 Gordon R. Peterson
 Kevin Pitts
 Premier Mechanical Services
 Douglas and Tammy Pullin
 Ronald and Mary Esther Pullin
 David J. and Janet B. Quinn
 Ryan T. and Stacy A. Reedy
 Terry Reinert
 Helen E. Richardson
 Michael B. and Kathleen M.
 Richardson
 Dee Rosenbaum
 Shirley A. Rosencrans
 Rost Motor Inc
 Donald and Audrey Rutz
 Sydney K. Sakamoto
 Robert and Bridget Sandquist
 Adda C. Sayers
 Randy Schaffer
 Gene Schutjer

Science Applications
 International Corporation
 Select Electric Service, LLC
 Dale and Mary Sexton
 Larry E. and Sally J. Smith
 Neal and Jenifer Smith
 Mark K. and Lois Soine
 Janiene D. Sotter
 Speak PR
 Marian and Vaun Sprecher
 St Mark Lutheran Church
 Susan and Bryan J. Stearns
 Jean A. and Ronald D.
 Steenhoek
 Dwight D. and Shari Stelling
 Kimberly J. Stewart
 Rodney and Kristal Stites
 SWARM Enterprises
 Bruce T. and Susan E. Travis
 Katharina Tumpek-Kjellmark
 and Christopher Kjellmark
 Carolyn Van Meter
 Arlan W. and Barbara A.
 VanRoekel
 James S. and Rae Ann Vigen
 Chris Weaver
 Brian and Sheila Wenck
 David R. Wheeler
 Mary Jo and Tom Williams
 Alan C. and Mary Jo Wilson
 Ryan D. Wilson
 Janea K. Wisecup
 Michael G. Woodley
 Alec I. Zama
 Gayla and Steven Zenz
 Brent and Jeanne Zhorne
 Randy and Beth Zimmerman
 Zion Lutheran Church
Contributors
 Michael B. Adams
 Adventure Lands of America,
 Inc.
 Pamela Aikins
 Dennis Albaugh
 Shelly A. Albus
 Alan and Teresa Algreen
 John Allen
 Connie M. and Noel V. Allen
 Ernest L. and Mischelle
 Allgood
 Michael A. Amadeo
 Joan P. Amiot
 Lance G. Anderson
 Ryan M. Anderson
 Susanne E. Anderson
 Timothy L. and Dawn D.
 Anderson
 Ruth E. Anerino
 Ankeny Community Theatre
 Anonymous
 Kendall Antle
 Andy and Rita Antolik
 James M. Arganbright
 Kathy Argotsinger
 Gene Arnold
 Nathan E. Arnold
 Jeffrey S. and Juanita M.
 Ashton
 Aspen Athletic Club
 Asset Servicing Group, LLC
 Betty Backstrom
 Marcel Bacon
 Keith and Gina Baird
 Mary Baird
 Lorna L. Bambrook



Bandana's Bar-B-Q
 Barre & Company
 Joseph M. Barrer
 Greg A. Bartlett
 Kendra Bassett
 Jimmy L. and Paula J. Battani
 Delores and Wayne Bauman
 Kathryn M. Baxter
 Jan and Alice Beauchman
 Karla Beck
 Bruce Bell
 Lindsay J. Bell
 Buddy L. and Steffany M. Bellis
 Mark Beltz
 Nicholas A. Benedetto
 Ryan and Courtney Berg
 Bergans
 Linda Biagioni
 Bud and Lorene Bice
 Darrold and Helen Bice
 Tina Binder
 Kyle C. Blackburn
 Bruce C. and Karla J.
 Blackwood
 Blank Golf Course
 Wendell W. Blankenburg
 DeAnn Bliss
 Jay W. Block
 Blue Flames Fuels
 Bob Brown Chevrolet
 Jennifer Bogdanoff
 Dean H. and Natalie Bohlmann
 Tom and June Bonderman
 Bonefish
 Daniel and Gloria Bontrager
 David and Mary Bontrager
 David R. Book
 James J. and Carol J. Borschel
 Nancy Bosshart
 George R. and Elaine M.
 Bradley
 Dee A. Bradshaw
 Ladonna Brandon
 Joy Brandt
 Rod Braun
 Bravo Cucina Italiana
 Chris and Judi Breitbach
 Brian and Lori Breitbarth
 James E. and Shirley R.
 Brenchley
 Jean E. Brenchley
 John E. and Kimberley A.
 Brenchley
 Michael J. Brenchley
 Anna Brenneman
 Briarwood Golf Course
 Ernst Bridgid

Rita Brigham
 Beau and Shea Brown
 Brianna Brown
 Molly Brown
 Peg and Danny Brown
 Thomas R. Brown
 Sally A. and Wesley I. Browner
 Bruce G. and Elinor Brownlee
 Bruegger's Bagel Bakery
 Shari E. Bruun
 Brian L. and Tamara J. Bullock
 Jami L. Burbridge
 Andy M. and Lorene S. Buresh
 Thomas H. and Bette Burke
 Barbara Burn
 Brian Burnam
 Yvonne D. Burnett
 Brenda C. and John P. Buzynski
 Scott L. and Susan D. Cahill
 Carlos O'Kelly's Mexican
 Restaurant
 Connie L. and Marvin E.
 Carlyle
 Charles A. and Jamie K.
 Carsrud
 Kirk and Lucinda R. Carter
 David G. and Amy D.
 Cartwright
 William G. and Dorla
 Cartwright
 Dwan Cason
 John R. and Connie L.
 Caviness
 Douglas A. and Annette M.
 Chalupa
 Ruth Chambers
 Allen D. and Sandra J. Charon
 Chase Suite Hotel
 Cheesecake Factory
 Daniel Chibnall
 Herbert J. and Patricia A.
 Chmelik
 Patricia A. Christen
 Casey Christensen
 Christian Home Missionary
 Baptist Church
 James A. Christie
 Nicholas I. and Laura E. Clark
 Tim and Sandy Clark
 Willie M. Clark
 Edward H. and Rosalie C.
 Claseman
 Michael J. and Tracey L. Clavell
 William H. Click
 Mark A. Cloud
 Cindy Coen
 Gary and Pamela Coffman

Tracy Coffman
 Evelyn Cole
 Jerald J. Collins
 Michael J. Colwell
 Mary L. Conner
 Scott Cooksley
 Copper Creek Golf Course
 Larry Costolo
 Nancy D. Couper
 Cracker Barrel
 Bailey Crawley
 Thomas Crawley
 Craig W. Cross
 Curtis Cunningham
 Cathy R. Current
 Dahl's Foods
 Scott E. and Cathy S. Dahm
 Sheryl Dahm
 Robert Daley
 Damone and Michaela Daly
 John and Tracy Dammerman
 Robert and Diane Davis
 Randy Dawson
 Tony L. and Charity A. Dawson
 Kayleen De Heer
 Edward G. and Barbara J. De Jong
 Frances A. De Jong
 Maureen R. De Sutter
 Marilyn De Zwart
 Jeffrey DeBondt
 Ronald and Shirley DeBondt
 Craig and Linda Decker
 Joel D. and Jordan Decker
 Emma Delk
 Susan DenOtter
 Pat DePover
 Barbara J. Derby
 Wayne J. and Trudie T. Derouin
 Des Moines Buccaneers
 Des Moines Marriott Hotel
 Paul E. and Susan E. Deutsch
 Phillip C. DeVan
 Angela Dickinson
 Marisol Diego
 Travis Dillinger
 Zelma A. and Warren G. Dilworth
 Jeff Dirks
 Barbara E. Doering
 Marty and Shirley Dolphin
 Rachel Dolphin
 Justin J. and Janice M. Doud
 Drake Diner
 Jay DuBois
 Noel Dubsky
 Steve and Sue Duffee
 Doug Duinink
 Peter Dunlop
 Bobbie G. Dye
 Dennis L. and Debra E. Earleywine
 Scott D. Easter
 Marlene I. Edsen
 Wilma J. Egenberger
 Paula E. Eichinger
 Michael Elgin
 James Ellis
 Sharon and Scott Ely
 Envy Salon
 Jodi L. Erpelding
 Daniel and Margaret Essler
 Chandler Evans
 Craig L. and Carla E. Evans
 Martin K. and Anita B. Eveleth
 Eyecare Center of St James
 Faith Lutheran Church
 David G. and Jan Farber
 Fareway Food Store
 Beau C. Feris
 C. Ron and Jacqueline A. Ferrell
 Carmelo and Catherine Figueroa
 Susan J. Fink
 Clint and Deanna Fischer
 Gene Flynn
 Rod Focht
 Richard J. Fondell
 Frances R. Ford
 Lynn M. Foreman
 Teri S. and Lori J. Formanek
 Scott and Renee Formaro
 C. Christine Foss
 Liz Fox
 Mike and Ann Fox
 Ranol H. and Robin R. Fox
 Esther R. Frandsen
 James A. and Barbara L. Frank
 Terry L. and Donna M. Freed
 Jim and Deb Frick
 Amy D. Fricke
 Kathryn Frisk
 Barbara J. Fritz
 Mary Ann Froderman
 Serth Fulton
 Benett J. Funke
 Funny Bone Comedy Club
 James Gale
 Merlin W. and Kay Gamble
 Benjamin Gander
 Ron and Jo Ann Gander
 Ronald A. and Ada K. Garner
 Anita M. Garrison
 Alan E. and Karen L. Gast
 Kirk and Joy Gibson
 Gary E. and Mary L. Giesler
 Bradley Gilbert
 Michael and Terri Gilbert
 Mark and Melissa Gilchrist
 Thomas B. Gilles
 Laurie M. Glass
 Brian J. Glick
 Donald and Margaret E. Glick
 Jeff J. and Jenna L. Gobin
 Grant and Julie Godbersen
 Kent and Jill Godbersen
 Jay and Angela Goetting
 David M. Goff
 Helen M. Gogel
 Phyllis J. Gogel
 Raymond J. Gogel
 Austin Good
 Rick Good
 Royce Good
 Jeff and Laurie Gordon
 Wanda M. Gorell
 Judith C. Grant
 A.M. Gray
 David P. Gray
 Lawrence Gray
 Steven Gray
 Terry and Stacy Green
 Andrew J. Greenfield
 Connie M. Griffin
 Mark E. Griffin
 Joseph and Mary M. Grochala
 Martin J. Grochala
 Daniel and Debra Groenenboom
 Susan Gruener
 Michael Guiter
 Jason P. Gulbranson
 Steve C. and Roxanne Gunderson
 Marlin L. Gustin
 Johanna H. Haffner
 Ronald Haffner
 David and Martha Hagan
 Beth E. Hale
 Dena and John Hall
 Bob and Lori Halleland
 John and Nancy Halleland
 Linda Halliday
 Larry S. Hamilton
 Kurt Hand
 Susan M. Hannon
 Daniel P. and Lou Ann Hano
 David E. and Betsy L. Hansen
 Janice K. Hansen
 Kathleen Hansen
 Kelly J. Hansen
 Jill G. and Mark E. Hansen
 Bert C. Hanson
 Darryl R. and Lois Hanson
 Dolores V. Hanson
 James G. Hanson
 Stacie N. Hardin
 Doris F. Hargrove
 John C. Hartley
 Donald L. Hasenkamp
 Richard G. and Mary J. Hatcher
 Kevin and Mary Haugen
 Cary and Lisa Hayes
 Doran and Jane Haywood
 Jo R. Heath
 Jon Heath
 David and Kathie Hekter
 Floyd and Cathy Helgoe
 Lee D. and Katherine L. Henderson
 Peggy Henn
 Marda M. and Clyde Henningsen
 Rebeca Hernandez
 Paul and Ruth Hershberger
 Harriett Hickman
 Don Hicks
 Nancy Hill
 Robert W. Hill
 Robert W. and Sandra J. Hill
 Dwight B. Hillmer
 James and Melissa Hines
 Betty Hirschfeld
 Charla W. Hisler
 J. Russell and Janis M. Hochstetler
 Lance D. and Sharon L. Hoefflin
 Clifford and Diane Hoffman
 Eleanor Holdgrafer
 Brad and Dyan Holterhaus
 Cathy Homard
 Timothy G. and Vicki L. Hood
 Jennifer E. Hoopes
 Karen M. Hopson
 Frank E. Hoskins
 Brian J. and Deonna Hotovec
 Michael R. Hotovec
 Pat H. Houchins
 Megan Houska
 Jeffrey and Tammie Houston
 Terry L. and Patricia L. Houston
 David J. and Julie R. Hove
 Kirk F. and Karen S. Hubbard
 Kris Hubbard
 IBM Corporation
 Brenda Ingle
 Rhonda Ingle
 Integrated Financial Service, Inc.
 Iowa Barnstormers
 Iowa Cubs – Greater Des Moines Baseball Company
 Iowa Speedway
 Sandy Issa
 Peggy A. Iverson
 Anthony K. and Beth A. Jackson
 Dorothea Jackson
 Mark A. Jackson
 Shelley Jackson
 Gregory W. and Deborah K. Jacobs
 Matthew A. and Janel L. Jacobsen
 Eric and Shelley Jacobus
 John and Karen Jahlas
 Ronald D. and Susan K. James
 Vernon R. and Malinda James
 Dan and Jodi Jamison
 Janzen Auction, Inc.
 Larry and Roxie Jarvis
 Giles and Tomma Lou Jay
 Amy E. Jech
 Beth and Randall G. Jensen
 Jersey Freeze Ice Cream
 Jester Park Golf
 Jethros
 Brian and Diane Johnson
 Casey Johnson
 Cheryl L. Johnson
 Ellsworth and Julie Johnson
 Kristine K. Johnson
 Bruce B. and Ilene Jonas
 Dale Jones
 David and Rhonda Jones
 Diane M. Jones
 Ken and Marsha Jones
 Mary S. Jones
 Velvia L. Jones
 Duane B. and Penny S. Joos
 Stephen P. and Tamara S. Joslin
 Jason D. and Jill M. Juarez
 K and B Tire, Ltd
 Jeffrey Kampen
 Angela Karanas
 Shelley Kaster
 Jennifer M. Keach
 Mary A. Kelchen
 Kimberly K. and Louis Kelleher
 David M. and Marilyn K. Keller
 Donald and Polly Kellogg
 Megan M. Kelly
 Phillip M. and Cindy S. Kenkel
 Suzanne Kennedy
 Von and Julie Kennedy
 TK and Melinda Kenton
 Travis and Janelle M. Kerkove
 Roger and Susan Ketel
 Matt and Jill Kiger
 Howard F. Kilburn
 William C. and Char Kimball
 Vernon King
 Yvonne Kirkelde
 Delbert Kissinger
 Mark A. Kist
 Linda K. Kizer
 Karen E. Klein
 William E. and Pamela J. Kline
 Erica and Chad Kløver
 Amanda C. Knight
 Jack R. and Sherry L. Knipp
 Brenda and Chris Knust
 Daniel T. Knust
 Francis L. and Sofia M. Kock
 Paul and Lynne L. Kock
 Michael and Janelle Kockler
 Judy Koele
 Kosama Complete Body Transformation
 Matthew C. and Amy E. Krambeck
 Richard E. and Elaine A. Krambeck
 Kim and Lindsey Krambeer
 LuVerne and Jeanette Krambeer
 Lynette Krambeer
 John M. Kruegel
 Eldon Kueker
 Kent J. Kuhr
 Carlos D. and Charlotte J. Kunzler
 Michael D. Kuwitzky
 Les and Carolyn Lande
 Kathy Langenberg
 Nancy L. Lantz
 Jean Larkin
 Debra L. Larsen
 Leon Larsen
 David A. and Diane M. Larson
 Dianne Larson
 Sandra R. Larson
 Gary D. and Marci K. Lass
 Dan Lastovka
 Thomas V. and Debra S. Lathrop
 Robert Lattner
 Mike and Carri Lauterbach
 Lemenager Land Services, LLC
 Gary Lemenager
 Rachel L. Lemenager
 Crystal L. Leonard
 Terri Lettington
 Mo Liang
 Robert D. Lien
 Jeff and Jess Lillie
 Mike and Katie Linde
 Gary Lindgren
 Kimmy Linn
 Matt Litchfield
 Fred W. Livermore
 Sergio and Barbara Loch
 Helen Lockwood
 Scott Lockwood
 Wanda L. Loehr
 Kathleen R. Logan
 Wendy Lohmann
 Linda G. Lomheim
 Elizabeth A. Long
 Bob and Helen T. Long
 Jeff Longnecker
 Wayne and Irene Longtin
 Douglas G. Love
 Glenn I. and Beverly Love
 Thomas A. Lovell
 Melissa S. Loving
 Carisa A. Lowe
 Marlene I. Lowman
 Fern M. Lox
 Barbara Luick
 David L. and Joyce L. Luke
 John C. and Liz Lyden
 Christina and Terry Lynn

M & D Painting
 Becky J. Maak
 Larry L. and Barbara J. Macke
 Martha Macken
 Robin Mackey McKinney
 Jean Mackey
 Margie C. Mackey
 Frank G. and Lynette J. Maher
 Laura B. Maher
 Sheila Mainquist
 Gary L. and Barbara J. Marchant
 Ryan D. and Stacy J. Marcus
 Dennis M. and Sandra K. Marine
 Mars Cafe
 Martin Construction
 Crystal L. Martinez
 Dolores A. Martinson
 Eddie Mathews
 Donald E. and Gail Maurer
 Shelby Mayer
 Morgan McAreavy
 Thomas McAreavy
 Bill D. and Marilyn M. McBee
 Kristin M. McBride
 Lynn and Mike McCabe
 Justin and Kayla McClure
 Wesley McCoy
 Peggy McCrea
 Kevin G. McCullough
 Maren R. McDougal
 Erin E. McDowell
 Kyle J. McDowell
 Rita McGee
 Jack B. and Brenda L. McGhee
 James W. McGinn
 Christopher R. McKeon
 Edward M. and Joyce F. McManus
 Sean and Julie McMurray
 Douglas and Connie McPhee
 Bryan S. McQuide
 Larry and Lisa Meadows
 Steven E. and Kelly A. Medina
 Cynthia and Gary Meggison
 Brent R. Meier
 Dolores M. and Lowell Meier
 Dorothy Mendlik
 Randy and Rebecca Menke
 Velma Mesecher
 Kari Middleton
 Midwest Premiere Sales Corporation
 David and Laurie Mihalik
 James H. and Barbara G. Miles
 Christopher M. and Terry Miller
 Dennis D. Miller
 Diana Miller
 Eva Marie Miller
 Francis Miller
 Francis J. and Eileen Miller
 Henry C. and Cheryl L. Miller
 Jeffery E. Miller
 Julie Miller
 Margaret and Herman Miller
 Merrill L. Miller
 Mimi's Cafe
 Cheryl A. Mingrone
 Nick S. and Rachelle Mitchell
 Richard C. Mitchell
 Darilyn Miura-Kojima
 David and Sherry Moehlis
 Josephine Molina

Raul and Jackie Molina
 Silvia Molina
 Rosemary V. Moody
 Diane S. Moorman
 David and Darla Moos
 Henry T. Moran
 David and Therese Morgan
 Linda K. Morgan
 Patty J. Morgan
 Greg and Mary K. Morris
 Jaclyn N. Morris
 Julie and Tony Morris
 Karen Morris
 Vilas and Patty Morris
 Sue Morrison
 Randy Mortvedt
 Michael P. and Cynthia L. Moses
 Daniel Mossakowski
 Carol Mott
 Jame Moylan
 Patrick Moylan
 Timothy M. and Diane K. Moylan
 William L. Moylan
 James C. Mullenix
 Teri A. Mundell
 Marlys and Steve Munson
 Cheryl A. and Patrick A. Murphy
 Richard H. and Judith L. Muselman
 Jeffrey T. and Mary Elise Myers
 John R. and Donna R. Myers
 Judith and Robert H. Myers
 Michael and K'Lee Naberhaus
 Lana M. and Steve C. Nail
 John Nardini
 Corinda K. Nelson
 Darwin and Mary Jo Nelson
 Jacqueline M. Nelson
 Jeff Nelson
 Margaret R. Nelson
 Teri Newey
 Tim J. and Beth A. Nielsen
 Glen R. and Pat G. Nieman
 Steve and Patricia J. Nimitz
 Jerry W. and Mary Nixon
 Patrick and Gina Noll
 Michael E. and Terina L. Nowlin
 Eric and Patty Nystrom
 Mary Ann Nystrom
 Sara J. and Dale L. Oldenkamp
 Beth Olson
 Chondra and John Osorno
 Otter Creek Golf Course
 Laura A. and Andrew W. Otto
 David E. Owen
 P.F. Chang's
 Michael A. and Tammie M. Page
 Frank S. Palmer
 J Michael and Linda K. Panczyszyn
 Panera Bread Bakery Cafe
 Ray and Betty J. Pargeon
 Parker Signs & Graphics, Inc.
 Bruce L. Paul
 Kevin and Kathryn M. Paul
 Bennett Pauley
 Kathryn A. Pauley
 Lyle G. and Janet Pauley
 Carolyn D. and Terry Pauling
 Amy and Randy Pawletzki

Pedersen Financial, LLC
 Gregory D. Peiffer
 Myrtle M. Peitz
 Glennis R. and Cara M. Perkins
 Marceen K. Peters
 Allison E. and Jon Petersen
 Charles Peterson
 Heidi S. Peterson
 J L Peterson
 John and Brenda Peterson
 James and Debra Pfeifer
 Pfizer Foundation
 Phil Biss Upholstery
 Andrew P. Phillips
 James C. Phillips
 Stephen T. Phillips
 James A. and Nancy J. Phipps
 Allen A. Pickens
 Lorene Pickens
 Marsha and David Pickett
 Keith T. Pierce
 James F. and Janna K. Pierick
 Kermit T. Piltingsrud
 Alvin H. Pinke
 Tim and Nancy Pinke
 Mary E. Pisney
 Pleasant Hill Firestone
 David L. Poe
 Joann F. Porter
 Tom and Beth Potts
 Virginia L. Potts
 James and Shelly Powers
 Prairie Valley Matmen Club
 Holly S. Pratt
 Teri L. Pratt
 Larissa A. Pray
 Brian D. and Donna Price
 Primm Valley Resort
 Jacqueline L. and Richard L. Pullen
 Michael A. and Nan M. Quesinberry
 Sandy Quick
 Janis L. Rabenold
 Jeff Ramberg
 Roland E. and Mavis Ramberg
 Rambow, Inc.
 Jeanne D. Rankine
 John L. and Paula C. Rasmussen
 David and Liz Rasmusson
 Jill Rasmusson
 OD and Elinor Ratliff
 Betty B. and Reimert T. Ravenholt
 Alice Rebec
 Kristine and Roger Reed
 Michael and Amy Reeves
 Sheila Reeves
 Wendell L. Rehnblom
 Monica Reicks
 Lloyd D. and Mary T. Reid
 Bernetta H. Reinert
 Stella Reser
 Richard P. and Kristin Reynertson
 Clifford T. and Gayle A. Richards
 Pual A. and Carol Richards
 Jason R. Richardson
 Todd A. and Danielle Ricketts
 Janice L. Ried
 Debra Riehle
 Jim and Kim Riesterer
 Lori and John Riley



Henry and Kathy Rios
 Leonard B. and Denise Rivers
 Seth A. Roberson
 Michael Roberts
 Susie Roberts
 Roy A. and Charlotte A. Roble
 Jessica M. Rodgers
 Hector and Cindy Rodriguez
 Rene R. and Elizabeth M. Rodriguez
 Robert L. and Minda J. Rodriguez
 Toni R. Rogers
 Christy A. and Roger Roland
 Anne E. Ronholm
 Mark Rooney
 Harold and Cheryl Rosen
 Ann Rosenbaum
 Brian R. and Joleen R. Roskamp
 Andy and Eva Ross
 Kevin Routh
 Neuby and Tracy Russell
 Joe and Kerry Ruth
 Jeff Rutz
 Daniel and Jane Ryan
 Ryan's Family Steak House
 Robert and Joyce Saacke
 Shawn and Joyce E. Sabala
 Michael M. and Tina P. Sakamoto
 Ronald Salentine
 Craig Samson
 Bradley and Julie Samuelson
 Leanne L. Samuelson
 Jack M. Sanders
 Beatrice I. Sandquist
 Annette J. and Rick A. Sandquist
 William J. and Coleen Sandquist
 Jeffrey and Mae Saunders
 Robert and Lisa Saunders
 Mark R. and Sara J. Sauter
 Pat Schaffer
 John and Connie Scheevel
 Ronald G. Scheirer
 Roger J. Schenke
 Heidi Scherf
 Jerry H. and Marlys D. Schiermeister
 Jason A. and Kathy J. Schipper
 Patrick L. Schlapia
 Jared J. and Heather M. Schmidt
 Jennifer Schmidt
 Schneider Electric North America Foundation

Robin Schone
 Kent A. and Nancy Schornack
 Jake E. Schroeder
 Ernest R. Schulten
 Lores D. Schultz
 Marsha Schultz
 Melinda and Robert Schultz
 Patricia Schumacher
 Lance Schutjer
 Tracy L. Schutte
 Carl D. Schwarck
 Jeffrey A. Schwarck
 Science Center of Iowa
 James E. and Kay J. Scott
 Jodi K. and Stuart Scott
 Marjorie Scurlock
 Bienvenida T. Segismundo
 Diane Segismundo
 Bill and Mary Seibert
 Tomara M. Sellner
 Lester R. and Georgia Septer
 Virginia Settle
 Keith W. Sexton
 Marguerite L. Sexton-Randels
 Joan K. Shannon
 Patrick and Jean Sheets
 Sheraton Hotels
 Jerry Shipley
 Linda Shipley
 Dale and Michelle Shriver
 Jim and Dorothy Siebrands
 William P. Siglin
 Deb Simpson
 Ann Simril
 Skogerson & Maxwell Leckband, PC
 Ernest H. and Patricia D. Small
 RJ Smalling
 Allison Smith
 Angela Smith
 Arthur O. Smith
 Dale L. and Deb L. Smith
 Danny D. Smith
 Jeff and Gina Smith
 Judy A. Smith
 Julie Smith
 Todd S. Smrekar
 Gene and Cynthia Sobbe
 Dustin Sorensen
 Nancy A. Soukup
 South Ridge Mall
 Spaghetti Works
 Linda L. Speed
 Stanley and Lupe A. Speers
 Beverly Spence
 Brian Spensley
 Mary and Charles Spittler
 Splash Seafood

James J. Staber
 Gregory Stafford
 Shane Stanley
 John and Diane Staples
 Beverley C. Starace
 Beverlee A. Starr
 Sharon T. Steffa
 Michael and Heather Steffans
 Tom Steil
 Joe Stein
 Melvin F. Stevens
 Sylvester Stewart
 Brian and Cindi Stickel
 Jove M. and Teresa K. Stickel
 Christianna M. Stiles
 Gregory and Susan Stillmunkes
 Ralph and Dee Stocker
 Ventsislav M. Stoimirov
 Cara Stone
 Robert S. and Kathy J. Stone
 Tim L. Stonehocker
 Story City Building Products
 Chris J. and Tamara S. Strait
 Thomas B. Strayer
 Douglas D. Streicher
 Lori Striegel
 Stuart and Janell Stringham
 Whitney Stuart
 Stan and Carma L. Sturtz
 Zebblin M. Sullivan
 Amy Surma
 John Swanson
 Taco John's of Iowa
 Richard and Uraivan
 Takamoto
 Gregg S. Tallman
 Target
 Lowell L. Teggatz
 Diane S. Tenhoff
 Terra Realty Services, Inc.
 Bernard L. Theulen
 Carly A. Thiel
 Diane and Dirk Thierer
 Evan A. Thomas and Liz Teufel
 George Thompson
 John M. Thompson
 Lisa Thompson
 Vera Thompson
 Douglas A. and Kay D.
 Thomson
 Patricia Thorson
 Ken Thraikill
 Sue Thraikill
 Carl D. and Becky Tiffany
 Catherine M. Tott
 Robert and Diane Tott
 Shelby Toyama
 Ronna Travali
 James D. Tribble
 Sally-Anne Trott
 Michael D. Trytten
 Tumea and Sons
 Kent Turner
 Pauline L. Tyer
 Mary Beth Tystahl
 Richard A. Udland
 Susan Udland
 Eleanor L. Utermarck
 Ed and Lori Utermarck
 John and Joanne Van Etten
 Scott J. and Wendy Van Roekel
 Sue A. Van Sant
 Rick Van Zee
 Ardis K. Vande Kamp

Kevin G. and Jill L.
 Vander Zwaag
 Patricia VanDyke
 Ben VanVeen
 Dwight and Virgie VanZee
 Mary Vaske
 Mark Brown
 Brian Vercande
 Daniel E. and Pamela Vercande
 Village Inn Restaurant
 Daniel E. Vinson
 Richard and Marsha Vitiello
 Audrey J. Voelker
 Ellen and Heinrich VonMende
 Berdena E. Vos
 Bonnie and Brad Vos
 Doug E. and Kim E.
 Wagemester
 Robert J. and Mary Ann
 Wagner
 Randy and Johnna Walker
 Darwin and Maxine Walter
 Joanne Warren
 Waste Connections of Iowa,
 Inc.
 Pat and Joan Waters
 Glenn E. and Cheryl K.
 Waychoff
 Charles E. and Doris Weber
 Mark and Kristine Weitzell
 Larry and Anna Welch
 Douglas Wells
 Steve D. and Debra L. Wells
 Dennis Wermersen
 Pamela Weston
 Lawrence W. and Barbara M.
 White
 Ruth White
 Ryan Whitehead
 Jean Wiechmann
 Jeffrey Wignall
 Lois L. Wignall
 Cynthia L. Wiley
 Eunice E. Williams
 Jennifer Williams
 John Williams
 Lisa B. Williams
 Theodore and Marilynn
 Wilmes
 Pamela R. Wilson
 Paul Wilson
 Trent Winegar
 Bill Winnike
 John and Melissa Winnike
 Rudy and Linda Wipperman
 Nancy A. Wolf
 Amanda Wood
 Trisha H. Woolever
 Michael G. and Michelle L.
 Wright
 Melissa K. Wunsch
 Sharon Wunsch
 Debra Wyckoff
 John E. and Elizabeth Yakel
 Jon and Chelsey Yanders
 Joyce E. Yates
 Vernita K. Youde
 Donald R. Young
 Karen A. Young
 Sharon M. Young
 Cindy Zandstra
 Shelly Zimmel
 Ziva Couture
 Vernon and Marlene Zobel

HERITAGE SOCIETY

Ellen K. Andersen '45
 David E. and Karen T.
 Anderson
 Evelyn R. Beckman *
 Signe T. (Nielsen '49) Betsinger
 Dean R. and Mildred * Betts
 Dagmar P. (Rodholm '31)
 Blankenfeld *
 Steven F. '69 and Nancy
 (Lavender '78) Bobenhouse
 Lloyd R. * and Ada * Bock
 Egon P. '54 and Diana J.
 Bodtker
 Mervin Bro *
 John C. '66 and Colleen
 Burgeson
 Bill and Kristi Burma
 John E. * '56 and Joan F.
 (Whitaker '56) Carlson
 Virgil E. '48 and Boots (Rix '46)
 Christensen
 John E. '57 and Joan R. Cisna
 Aage R. * '52 and
 Geraldine * Clausen
 Hans J. Clausen '58
 Vivian Cline *
 Monroe J. * '63 and
 Frances V. Colston
 Michelle D. Cook '95
 Eric T. '75 and Kathy Crowell
 Gregory A. and Carmen M.
 (Beeman '69) Crump
 Douglas J. '80 and Kristin
 Detrick
 Robert and Pam DeWaay
 Lee and Diane (Gill '76)
 Doidge
 William L. Duncan '62 *
 David M. Esbeck '59 *
 Pearl B. Frease *
 C. Fredrick '68 and Gerry '94
 Fuller
 D. Diane Fuller
 Mr. and Mrs. Robert F. Galligan
 Margaret L. Gee '48 *
 Donald E. '85 and Susan M.
 German
 John C. Gertenrich
 Harry W. * and Thyra *
 Gjelsteen
 Kristen L. (Legg '94) and Jim
 Gray
 Solveig E. (Petersen '61 *) and
 Larry Gregory
 Ethel C. Grote *
 Carl C. '55 and Jane A. *
 Hansen
 Edward '21 * and Rosa *
 Hansen
 Kent L. and Carole Henning
 Bruce C. Hoiberg '61 *
 David G. Holmgren '73
 J. Robert and Joyce * Hudson
 Alice C. (Olsen '47) Humphrey
 George K. Huntington '64
 Joy M. Ibsen '60 and Don
 Lenef
 Allan D. '48 and Blanche
 (Christensen '47) Jacobsen
 Curtis Dale Jacobsen '54
 Ruth E. Jacobsen '49
 William C. Jacobson '61

Erna C. Jensen
 Harry C. * '40 and Ellen T.
 (Andersen * '41) Jensen
 Delores (Holmgaard '40) and
 Ronald P. '41 * Jespersen
 Marvin P. '47 and Helen
 (Nielsen '43 *) Jessen
 Richard N. '57 and Glenda
 (Pickett '57) Jessen
 Chuck and Jaina Johnson
 Arnold A. * and Dorothy
 (Grunander '40 *) Johnson
 Alice Jordan *
 Ellen U. (Bollesen '45) Juhl
 Peggy A. (Corley '94) Kacer
 Douglas W. and Louise F.
 Kachel
 Jeanette Kawaguchi
 Rev. "Gus" * '49 and Eunice J.
 (Hermansen '50 *) Knudsen
 Luanne J. Knudsen '86
 Sonja Knudsen '57
 Richard G. '53 and Marilyn O.
 (Hansen '54) Kramme
 Kathrine G. Kuhlman '27 *
 Terry W. '69 and Beverly J.
 Lantz
 Lavern '53 and Marilyn A.
 (Nissen '55) Larkowski
 Robert W. * and Dorothy *
 Larson
 Robert E. and C. Ann * Larson
 Rev. Raynold J. * and
 Ena E. * Lingwall
 James E. and Pat Luhrs
 Ronald P. '57 and Melvie
 Maigaard
 Daniel F. '56 and Jean B.
 Martensen
 Margaret R. McCullough
 Ferol S. Menzel
 Daniel P. '60 and Alice V.
 (Olsen '60) Mikel
 A. Jane Molden *
 Leland E. '59 and Virginia
 Molgaard
 Harry E. '42 * and Dorothy J.
 (Petersen '43) Mortensen
 Dennis and Gail Muehling
 Mary May Mullins *
 Judy E. (Dart '62) Murrow and
 Paul Riemann
 H. Michael * and Carolyn
 Nehls
 Rev. Carl O. Nelson
 Charles and Solveig C. Nelson
 Robert L. Neswold '67
 Ivan E. '40 * and Irene *
 Nielsen
 Rev. Ove R. Nielsen * '42
 Ruth Herman Nielsen *
 W. Clayton '42 and Virginia
 (Jensen '42 *) Nielsen
 Paul I. '51 * and Agnes
 (Ravenholt '51) Nussle
 Paul C. Oksnee '71
 Byron '54 and Alis
 (Mortensen '56) Olsen
 Rev. Harold E. '45 and
 Charlene R. Olsen
 Chris A. '93 and Rachel L.
 (Willems '92) Onsrud
 Leila M. (Lauritzen '43)
 Patchett
 Esther U. (Johansen '47)
 Paulsen
 Harlan H. '48 and Anne M.
 (Jensen '50) Pedersen
 Rolf V. Pedersen '40 *
 Ardis (Nielsen '32) Petersen *
 Evelyn M. (Frost '48) Petersen
 Janice Pohl In Memory of
 Enok * & Nanna * Mortensen
 Barbara G. Price '86
 LaVerne C. and Janice E. Quass
 Anna Ingeborg Raae *
 Albert V. Ravenholt '39 *
 Michelle W. (Wilkinson '89)
 Reynolds
 Clayton L. * and Helen
 Ringgenberg
 Kenneth R. Rolf *
 Richard M. * and Ruth * Root
 Esther M. (Jensen '46)
 Rossman
 Brian W. Samuelson '92
 Michelle K.
 Wimmer-Sanders '87
 Marianne A. (Fischer '79) and
 Robert J. Saxton
 Heather M. and Jared J.
 Schmidt
 Priscilla Ruth (Rossman '77)
 Schwartz
 Dana A. (White '74) Shaeffer
 Miriam R. (Rodholm '38)
 Showalter
 Diana J. (Jacobs '87) and
 Philip O. Suckles
 Jennifer S. Simpson
 Richard M. '57 and Karen R.
 (Sorensen '57) Simpson
 David L. '51 and Arlene F. '71
 Sisam
 Casey M. Smith '04
 Rev. Gordon V. * and
 Florence K. * Smith
 Gordon J. and Karen J. * Smith
 The Rev. Donald Sondrol
 Roland L. Jensen '46 * and
 B. Joan Sorensen
 Robert H. * '40 and Harriet N.
 (Kruse '40) Sorensen
 Richard F. Sorensen '61
 Robert H. Sorensen '40 *
 Karen A. (Hoskins '86) Spahr
 Robert M. Speed
 Benedict Stockholm '33 *
 Halvor H. Strandskov '56
 Elizabeth * and Joseph L. *
 Strasser
 Margaret B. Swanson *
 Margaret Syring *
 Ronald L. Taylor
 Richard N. Thomsen
 Edith M. Timmons *
 Gary T. '61 and Patsy A. Vande
 Venter
 James C. '51 and Joann
 Walters
 Steven D. '82 and Mary T.
 Williams
 Wilber J. * and Cleo (Gould *)
 Williamson
 Werner E. and Ruby R. *
 Zarnikow



DES MOINES DIFFERENCE MAKERS

Grand View University

Grand View continues to grow and thrive in our community; more than 8,000 alumni live in and around the area. They are increasingly creating and leading significant institutions and initiatives in the region. Grand View success stories saturate the Des Moines area in the private and public arenas, lifting up the standard of living, increasing cultural opportunities and awareness for residents and the many visitors to the capitol city. The goal of the Des Moines Difference Makers is to call attention to alumni who are taking what they learned as students and what they have absorbed in the real world to make a difference in Des Moines.

SCOTT C. CIRKSENA '88, MAYOR FOR CITY OF CLIVE; KENWORTH TRUCK CO., SR. DISTRICT SALES MANAGER



How did GV help you discern your purpose in life?

The educational experience and the relationships I developed at GV helped me establish priorities early on that helped me much later in life. The idea that hard work is rewarded, that being active in your community is not only an opportunity but an obligation, that leading by example is the best way to

lead, are such priorities that caused me to seek elected office. I wanted to be involved in community stakeholder organizations and developed a desire to be involved in the future of GV.

How is Grand View most important to the Des Moines community?

GV is an integral part of the metro community. Not only

does GV draw in students from the local area, but it returns many of those students back into the local professions that make up our community. It is a distinguished role that GV plays very well and seems to get better at every year.

In what ways have you become involved in your community because of your experiences at Grand View?

GV leadership has made other community leaders part of their governance system, which has enhanced their working relationship with local business and the community at large. GV has chosen to be a visible participant in the community and this rising tide does lift all boats in terms of economic, social and cultural impact. The growth of GV, particularly over the last fifteen years, in refining its mission, facilities expansion, program enhancement, and community outreach has set an example for me personally to not be afraid to aim higher with my individual, career and public service goals.

TONY WILSON '76, APPLIED ART & TECHNOLOGY, PARTNER



Tony is a founding partner of Applied Art & Technology in Des Moines, Iowa. Since its inception in 1993, Applied Art has grown to become one of the region's largest and most respected film, video and new media production companies. He serves on the board of the Boys and Girls Club and is past president of the Urbandale Swim Club. He was named the 2008 Distinguished

Alumni, and was awarded the only medal given by the New York International Film Festival in 2003 for direction of the short film, I Remember in 2008. In 2007, he also produced the feature film The Final Season.

How did Grand View help you discern your purpose in life?

I was not very scholarly but everyone said you need a college degree. I was interested in film, and Grand View was perfect because not only was it affordable, but it also helped confirm my passion for media.

How is Grand View most important to the Des Moines community?

Every community has a responsibility to train the next pack

of leaders, and if you look out across the community, state and country, GV is very well represented in the halls of corporate America.

How have the values you learned as a member of the Grand View community continued to be important to your personal and public roles in society?

I wasn't a Lutheran, but I did have a strong faith background, which I feel is an important aspect in any educational institution, and one that is getting lost on the greater society as a whole. We need to preserve that at all costs. GV welcomes all faiths and encourages students to pursue and act on their faiths.

How did GV's emphasis on engaging in a community with others help you to engage in your community?

During many of the classes I took we were encouraged to collaborate with others and think our way through problems. There was one science class I remember in particular where the group I worked with had the right mix of skills to solve just about any problem handed to us. It was a good lesson; I have been in a successful partnership for the last 20 years, and most partnerships last less than ten years.



CHANGE SERVICE REQUESTED

NOTE TO PARENTS: If this issue of GV Magazine is addressed to your son or daughter who no longer lives at your address, please provide a change of address to Grand View. Contact the Alumni Office by mail, email or phone.

BIG CHANGES

Take a look at all the campus enhancements that happened over the summer months on pages 3-4. Then don't miss information on the upcoming transformations on page 6.

