



**Gv** magazine

Grand View University  
Fall 2015

**STUDENT CENTER OPENS | 8**



PHOTO: JIM HEEMSTRA

**The Student Center is up;** Jensen Bridge (the skywalk across East14th Street) is open. We celebrated their completion and dedicated the building at a "Grand Gala" on Homecoming weekend. What a glorious and historic occasion!

Already in these first few weeks, we're seeing the impact of the Student Center. This project was designed to provide formal and informal gathering spaces for our campus community, enabling

our students, faculty, and staff to come together for good food, fun activities, special presentations, community service projects, or just to deepen our relationships with each other.

I've enjoyed seeing students, faculty, and staff dine together in Carlson Commons. In between meals, some students grab a snack and study in Ibsen's Valhalla. I always see students visiting and/or studying together in CJ's Place. The Speed Lyceum has already been the venue for a wide variety of activities and gatherings, everything from admissions visit days to informal worship services, a faculty recital, and the student Homecoming dance.

The Student Center also houses the Communication Department, all of our student media, and our theatre program. Students in those programs and activities are grateful for their new facilities and their location in the center of campus life. Moving our communication programs to the new Student Center made it possible for the Cowles Center to become our new music building. The Music Department is thrilled to have expanded and newly renovated teaching studios, rehearsal spaces, and practice rooms.

The Student Center also enables us to host outside groups for meetings and

events involving the wider Des Moines community. By the time this reaches you, we will have hosted the East and South Des Moines Chambers of Commerce Celebration of Progress gathering. Among the 45 outside organizations that have already reserved space are Onelowa, Des Moines Performing Arts, and Black and Brown Forum; and a candidate for Des Moines City Council has booked the Student Center for his election-night headquarters. I personally have hosted several community groups in the Prairie Meadows Plaza View room, with its spectacular views of the central part of our campus. All of our outside visitors have raved about the building. Indeed, the building's purposes are being realized.

So now that it's finished, I frequently am asked, "What's next?"

The Student Center culminates a 15-year-long period of construction and investment in campus infrastructure that enables us to be the type of institution we've envisioned. Our strengths come from being a relatively small, faith-based, mostly residential, liberal arts institution that seeks to engage students in the life of an academic community. We fulfill our mission not just with instruction, but also through relationships.

To realize our institutional potential,

## table of contents

**MUSIC FINDS  
NEW HOME  
IN COWLES  
CENTER**

**2**

Cowles underwent summer renovations to transform it into the new home for the Music Department.

**HOMECOMING  
2015**

**24**

Another year in the GV history books. Grand View welcomes alumni back and celebrates a Viking win.



we have invested in state-of-the-art instructional spaces, quality athletic facilities, attractive living spaces, campus infrastructure, and now, welcoming gathering places. We now have the facilities to provide the education, the learning environment, and the campus life we envisioned.

Does that mean we're done? Not exactly. Going forward, however, our needs will be focused more on programs. We will need to make quality improvements and/or address capacity issues in particular academic or athletic areas. For example, even while constructing the Student Center, we've renovated and reconfigured space in the Elings Science and Classroom Building to handle growth in those programs and to accommodate more student research activity. That will continue.

Over time, we may need to expand or reconfigure space for certain student services, for specific athletic programs,

and for academic programs that need specialized facilities. For the next several years, our projects will be smaller in scope but significant for the areas they serve. Longer term, the Board of Trustees will decide our direction. I anticipate that in the next couple years our Trustees, faculty and staff will begin another process of strategic planning. I will recommend that we engage in a deliberate process of prioritizing our facilities needs as a part of that larger planning exercise. In short... stay tuned.

Thanks again to everyone in our larger Grand View family who made the improvements over the past 15 years possible. And if you have not been to campus in a while, come visit!

  
**KENT HENNING**  
**PRESIDENT**



**FALL 2015**  
**VOLUME 64, NUMBER 2**

**Editor** LACIE SIBLEY '07  
**Designer** KELLY (DeVRIES '00) DANIEL  
**Contributing Writers** MOLLY BROWN, SANDRA FLAHIVE, LAINE MENDENHALL-BUCK '92, RACHELLE MITCHELL  
**Photographers** JIM HEEMSTRA, RACHELLE MITCHELL, LACIE SIBLEY '07, BRIAN PATTERSON '95, DAN VANDER BEEK '90, DOUG WELLS, STEPHEN WINZENBURG

**Board of Trustees**

**Chair** PAUL E. SCHICKLER

W. Kim Austen  
 Karen (Sorensen '70) Brodie  
 Michael L. Burk  
 Eric W. Burmeister  
 Gregory J. Burrows  
 Peter M. Cownie  
 Mary C. Coffin  
 Eric T. Crowell '77  
 Virgil B. Elings '58  
 Brett E. Harman  
 Jason Henderson '93  
 Nick J. Henderson  
 Kent L. Henning  
 Richard W. Hurd '72  
 Carey G. Jury '70  
 Christopher J. Littlefield  
 Robert L. Mahaffey '58  
 Christian M. Murray '98  
 Anita Norian  
 James W. Noyce  
 Gary E. Palmer '72  
 Kurt E. Rasmussen '88  
 Dawn Taylor  
 Martha A. Willits

**Honorary Members**

Marcia H. Brown  
 C. Dean Carlson  
 Garland K. Carver  
 H. Eugene Cedarholm  
 Robert S. DeWaay  
 Phillip D. Ehm '51  
 Thomas R. Gibson  
 Larry D. Hartsook '63  
 Michael N. Hess  
 J. Robert Hudson  
 Theodore M. Hutchison  
 Richard O. Jacobson  
 Charles S. Johnson  
 Timothy J. Krumm  
 James E. Luhrs  
 Sandra K. (Jensen '57) Rasmussen  
 Elton P. Richards  
 John P. Rigler

GV Magazine is published twice annually by the Marketing Department at Grand View University and is distributed at no charge to alumni and friends of the institution.

Constituents are encouraged to send contributions, suggestions and information for Alumni News to: Lacie Sibley, Editor; Grand View University; 1200 Grandview Avenue; Des Moines, IA 50316-1599 515-263-2832; lsibley@grandview.edu or fill out the form online at [www.grandview.edu](http://www.grandview.edu).

Grand View University  
 1200 Grandview Avenue  
 Des Moines, Iowa 50316-1599  
 515-263-2800  
 800-444-6083  
[www.grandview.edu](http://www.grandview.edu)

**THEN & NOW**  
 The view down Grandview Avenue in 1999 – prior to President Kent Henning's arrival – and today in 2015, with completion of the campus master plan.





# MUSIC FINDS

BY LACIE SIBLEY '07, EDITOR

Until the start of the 2015-16 school year, Cowles – affectionately known as Comm to most communication students – was the hub of all communication-related majors. During the summer months the building underwent renovations that have transformed it into the new home of the Music Department.

What was once the photo lab and dark room is now the choir room, complete with risers. The old dark room space was taken out to expand the room. The vending machine area was enclosed and is now the piano practice suite. Two grand pianos occupy the room, which doubles as an office space. The previous TV studio is now the band room.

“We needed a greater amount of space for our growing ensembles, and I am pleased that the administration kept the Music Department in mind while crafting a master plan for the campus,” Mark Doerffel, assistant professor of music, said. “Having dedicated rehearsal spaces that have been transformed for our particular needs is wonderful. No longer do we need to constantly adapt one room for classroom, choral, and instrumental uses.”

The journalism lab has been converted into a multi-use classroom. The radio station has moved to the Student Center and in its place is one of several practice rooms for voice lessons or instrument sessions. The photo studio remains in tact in the east wing of the building. The two main classrooms still remain classrooms, and the instructor offices are now occupied by Doerffel; Dr. Kathryn Duffy, professor of music; Dr. Ken Jones, professor of theology and religion; and Dr. Mark Mattes, professor of theology and philosophy.

Music students are extremely excited about the move to their new home. Prior

From top: Choir practices in their new choir room, located in Cowles Center; Mark Doerffel, assistant professor of music, conducts band practice in the new band room, previously the TV Studio; Students practice piano in the new piano suite in Cowles. PHOTOS: LACIE SIBLEY '07 AND JIM HEEMSTRA



# NEW HOME IN COWLES CENTER

to the move, the Music Department had one teaching space that had to serve as rehearsal space for choir and band, as well as a classroom for music classes – which included full sections with 20 or more students. The room was also used for music equipment and instrument storage. The department lacked sufficient studio space for teaching music or practice.

“Having the Music Department in its own building has given the program continuity,” Rachel Kelly, nursing student and choir member, explained. “In the previous building, I, as a musician, felt a little nomadic. Everything was so spread out, and there was no sense of community. Now, the new building promotes interaction and collaboration among musicians. Both music majors and non-majors alike have seemed much more enthusiastic in their endeavors this year, and I think that can be attributed to having our own space. Music finally has a home and I know that current and

future musicians will use it to accomplish amazing things.”

Entering her twenty-first year at GV, Duffy is particularly thrilled with the move to the new music space. During her time on campus, she has seen many changes... the renovation of the Humphrey Center, construction of the Johnson Wellness

institution on the part of students and faculty alike that was lacking when I came here,” Duffy said. “One of my dear colleagues and friends said to me when I arrived here, ‘Our job is not to reap the harvest, it’s to plow the fields. Plow, plow, plow.’ Although I love the plowing, it is truly exciting to see the

---

*“Both music majors and non-majors alike have seemed much more enthusiastic in their endeavors this year, and I think that can be attributed to having our own space.”*

*– Rachel Kelly '16*

---

Center, Rasmussen Center, and residence halls, the acquisition of Jensen Hall, closing Grandview Avenue, major improvements and upgrades to Elings, extensive landscaping, and now the new Student Center and the transformation of Cowles into a music building.

“These physical changes have brought about a sense of pride in the

fruits of our labor taking shape in the transformations that are taking place.”

The Music Department also has a new recital hall in the form of the Speed Lyceum, located in the Student Center. With its hard surfaces and new grand piano, the beautiful space is ideal for solo and small ensemble performances. **GV**

## *Julefest 2015* *O Beauteous,* *Heavenly Light*

**Saturday, December 5**  
**7:30 p.m.**  
Faith Lutheran Church  
10395 University Ave, Clive

**Sunday, December 6**  
**4:00 p.m.**  
Luther Memorial Church  
1201 Grandview Avenue, Des Moines

Admission free with ticket. For tickets and more information, contact [lpray@grandview.edu](mailto:lpray@grandview.edu) or 515-263-2991.

## Nielsen CONCERT SERIES

New format...new venue! The new series is composed of two events, with evening concerts open to all and afternoon master classes and brief performances in various metro-area schools. Our mission is broader and more encompassing, bringing the joy of serious music not only to GV students and the community, but also to younger students who may carry that joy with them for a long time to come.

## ENSEMBLE AUBADE

**Monday, November 2, 2015 • 7:30 p.m.**

Speed Lyceum, Grand View Student Center

Tickets: \$20. No charge for students, faculty and staff

## CAMPUS NEWS BRIEFS

### MAJOR GIFTS DONATED

Wells Fargo & Co. donated \$100,000 to support GV COMPLETE, our plan designed to help make a Grand View education more affordable and support students in making the most out of the scholarships, grants, and loans that will become key parts of their financing. The donation will support financial literacy education for students enrolled in GV COMPLETE.

Kemin Industries founders R.W. and Mary Nelson made a gift for purposes of purchasing a new nuclear magnetic resonance spectrometer (NMR). The 400 mhz NMR replaces the 200 mhz machine acquired by GV several years ago. The new machine is the most powerful NMR in the Des Moines area to our knowledge. It will enhance the level of chemical analysis our students will be able to do. Employees of Kemin Industries also will have access to the NMR on the GV campus as they conduct product research and development.

These generous donations and valuable corporate partnerships represent the continued benefits of being part of the greater Des Moines community and greatly contribute to the quality of education our students receive.

### GV AWARDED NETVUE PROFESSIONAL DEVELOPMENT GRANT

Grand View was awarded a \$10,000 NetVUE Professional Development Grant to support the development of faculty teaching in the three Core Seminars. Instructors had the opportunity to participate in a faculty learning community focusing on how core seminars can help students discern their purpose, values, and contributions to the world. The NetVUE grant funded reading materials and a stipend for participants. Additionally, the grant funded a team



The Elings Science and Classroom Building received some summer updates. The old greenhouse, previously on the east side of the building, was demolished and a new greenhouse, approximately 720 square feet, was constructed in the Elings courtyard. Other renovations included complete remodels of two classrooms, updates to two other classrooms, and new ceiling tiles and LED lighting throughout several areas of the south wing of the building. PHOTO: LACIE SIBLEY '07

of three faculty to attend a conference where they learned about teaching liberal arts in a digital environment. The Council for Independent Colleges and the Lilly Endowment support the NetVUE grant.

### PARTNERSHIP WITH INTERNATIONAL BUSINESS ACADEMY OF KOLDING, DENMARK

We are pleased and excited to announce another international partnership that will benefit both our visiting international students and GV students interested in studying abroad. In February, GV agreed to a bilateral exchange program with the International Business Academy (IBA) of Kolding, Denmark. Three delegates from IBA, Rector Niels Egelund, Vice-Rector Ian Charles, and Professor Albert Elam, visited campus and signed a formal agreement with President Kent Henning. This exchange allows GV art and business students to take major level classes in English in Kolding, as well as bring Danish IBA students to our campus, enriching and internationalizing both institutions.

Keegan Davis '17, GV business major, is the first student for this new exchange program, and is the first recipient of the Merv S. Bros Scholarship – designed to support GV students who study abroad in Denmark. GV is also hosting its first two exchange students of the new program.

### GLOBAL VISION WEEK

This year's Global Vision Week was October 12-16. The week-long signature event provides students, faculty, and staff with opportunities to engage with belief systems, heritages, and perspectives different from their own through a series of globally-focused events and activities on campus. This year's topic was global health.

Dr. Sheila Ryan, the Charlotte Peck Lienemann & Alumni Distinguished Chair in the College of Nursing at the University of Nebraska Medical Center, was the keynote speaker. Ryan completed a five-day residency, interacting with classes and student groups, and engaging in other activities.

The campus community also participated in a poverty simulation.

### GV RECEIVES GOLD FIT-FRIENDLY WORKSITE AWARD

GV received the Gold Fit-Friendly Worksite award from the American Heart Association for the third year in row. Fit-Friendly Worksites are recognized by the American Heart Association as employers who go above and beyond when it comes to their employees' health. As a Gold-level award recipient, GV has fulfilled key criteria and demonstrated a strong commitment to providing a healthy workplace for employees. **GV**



# Congratulations, CLASS OF 2015!

BY LACIE SIBLEY '07, EDITOR

Last spring, April 25, at Hy-Vee Hall in the Iowa Events Center, Grand View presented degrees to 425 undergraduates and 16 graduate students, including the first graduates of the Master of Education and Master of Organizational Leadership programs.

This year's student speaker was Kelley Johnson, standout volleyball



player, student leader, and newly-minted BSN. She spoke on the accomplishments of the entire student body... national champions, service leaders, mothers, fathers, grandparents, students from other countries, honor society members, scholar athletes, nursing students, character award winners, music and theatre students... all the graduates who worked through the intensive and rigorous curriculum to get them to this point. And she asked

the graduates to imagine the impact they can have in the world, to be brave, and to embrace the fear that comes with knowing it is now up to them to make life decisions.

Johnson said, "It is now up to me, and only me, to decide not only how my time is spent, but also the life that I lead and the character that I embody... We don't stop mattering because our lives are about to seem unfamiliar. We don't stop mattering in this world simply because we do not know the extent of what it's like out there. We must embrace the unfamiliar... I want to encourage you all to do that after today, to follow your heart and intuition, to embrace change and to influence lives other than your own, make interesting mistakes, take risks you wouldn't normally take, call your mother, be open to opportunities even if they are unfamiliar, be flexible, fall in love, limit the amount of times you say 'always' and the amount of times you say 'never,' be kind to every single person you meet, share your heart even if it's broken, take pride in the person you have become, do not settle for mediocrity in any avenue of your life as time is too precious to waste on normalcy... we must work hard in this world because our dreams will not come true just because we dream them."

Chase Carlson, Viking Council president, business administration major, and track and volleyball athlete, presented a time capsule on behalf of Viking Council to be placed in the Student Center. The capsule contains several GV items to be shared with future



Commencement 2015 was April 25. Click to view the ceremony.

GV students. He suggested it be opened at the university's 150th anniversary, in 2046. Kurt Rasmussen '88, member of the Board of Trustees and CEO of the Rasmussen Group, accepted it and offered a few words of encouragement to the new graduates and a three-part challenge:

"Take what you have gained here and put it to good use serving others in your chosen professions... take what you have gained and make your community a better place... put some of what you've gained in service to your alma mater." **Gv**



Isaiah Tatum graduates – 15 months after accident.

Top: Faculty congratulate new graduates after the commencement ceremony. Left: Kelley Johnson, student speaker, addresses her graduating peers; Chase Carlson presents the time capsule to alumnus and board member Kurt Rasmussen '88.

PHOTOS: DAN VANDER BEEK '92



## FACULTY & STAFF ACCOMPLISHMENTS

**CAROL BAHL**S, executive administrative assistant, had a writing piece published in Country Magazine in the February/March 2015 issue.

**JASON BAUER**, associate vice president for student affairs, successfully defended his dissertation at Drake University in April.

**DR. CATHY BECK-CROSS**, assistant professor of social work, had a manuscript accepted to the National Association of Social Workers' Children & Schools journal. The article was entitled, High School Male Suicidal Behaviors: Using Bronfenbrenner's Bioecological Model to Identify Predictors Across Individual, Family, School, and Community System.

**MARK DOERFFEL**, assistant professor of music and director of instrumental activities, co-presented the clinic, De-mystifying the trombone: A guide for non-trombonists, at the Kansas Music Educators Association State In-service Workshop in February.

**DR. KEVIN GANNON**, professor and director for the Center for Excellence in

Teaching, was a guest on the Teaching in Higher Ed podcast in June and the Rock Your Research podcast in August. He was the featured profile in the August issue of Private University Products and News.

**KARLY GOOD**, instructional technology specialist, presented at the Blackboard World 2015 conference in Washington, D.C. Her presentation was titled, Using Blackboard for Institutional-Level Core Assessment: Capturing Big Data. She also co-presented in St. Louis at the United States Distance Learning Association 2015 Conference, and at the Iowa Association of Independent Colleges and Universities Information Technology meeting.

**DR. LINDSAY GROW**, assistant professor of education; **DR. SHARON BRINDLE**, assistant professor of education; **JULIE DEMICCO**, lecturer of education; **LINDA WALKER**, lecturer of education; and ten students attended the two-day Iowa Reading Conference in Ames in June. Grow presented with the education graduate students about strategies to help teachers address text complexity.

**LUANNE KNUDSEN**, assistant director of transfer admissions, was awarded the Michael Barron Impact award at the IACAC Conference.

**DR. MICHAEL LAGIER**, assistant professor of biology, was awarded a competitive research grant from the Iowa Science Foundation, which is administered by the Iowa Academy of Science. The grant, Microbial Genomics as a Platform to Engage Iowa Undergraduates in New Learning Opportunities, provides students with new ways to contribute to research in genomics, while advancing our understanding of how microbes adapt to harsh environments.

**DR. JOHN LYDEN**, liberal arts core director, gave presentations at two international conferences this summer. In May, he gave one of the opening plenary addresses at the International Religion and Film Conference in Istanbul, Turkey. In July, he presented at the Fandom and Religion conference at the University of Leicester, England, on his recently published co-edited book, the Routledge

## STUDENT SUCCESS



Several photography students received honors at the 2015 Iowa State Fair Photo Salon. **MARK COOPER '15** received a first place finish, **KRISTER STRANDSKOV '16** third place, and both Cooper and **MORGAN WALLACE '17** received honorable mentions. **JAY PROVENZANO '15** and Cooper each had three photos chosen for display, **JOSIPA SHIMICH '16** and **AMANDA GODDARD '16** had two, and **KELSEY JESPERSEN '15** had one chosen.

Mark Cooper '15 first place photograph

GV had total of 14 members in attendance at the Iowa **PHI BETA LAMBDA** (PBL) State Leadership Conference in April. GV PBL received 13 first places, five second places, seven third places, one fourth place, and one fifth place.

Ten student athletes, leaders and GV staff participated in the Dreamer Academy kickoff at Findley Elementary. This program focuses on getting children thinking about college at an early age. Colleges from all over the state are partners in the program.





## PROFESSIONAL DEVELOPMENT TRIP TO RUSSIA

This summer Dmitry Yarushkin, assistant professor of business administration, and Dr. Mark Mattes, professor of theology and philosophy, organized a GV-sponsored professional development trip to Russia. A total of 17 travelers took advantage of this opportunity. The GV group posed in front of the Russian Orthodox Cathedral on Red Square in Moscow. The travelers enjoyed concerts and the St. Petersburg ballet, famous castles like Catherine's Palace, saw an underground bunker in Moscow, ate lots of borscht and stroganoff, and danced with Russian musicians. **GV**

Companion to Religion and Popular Culture. He is this year's recipient of the Grand View Excellence in Scholarship award.

**DR. MARK MATTES**, professor of theology and philosophy, was a contributor for Colaborate Lutheran Student Bible, published by Spark House Press. This Bible is designed to appeal to middle and high school youth and answer questions about how the Bible intersects with real life.

Adjunct photography professor, **PAULA MAXHEIM**, won a blue ribbon for her photography contribution to the 2015 Iowa State Fair Photo Salon.

**RACHEL MERRILL-SCHWALLER**, assistant professor of art and design, was one of 23 faculty nationwide chosen by the Council of Independent Colleges (CIC) to participate in a week-long seminar on

teaching European art in context. The seminar, The Art of Storytelling in French Painting and Sculpture 1600–1850, was hosted by the Portland Art Museum in Portland, Ore., in July. It was designed for full-time faculty who regularly teach art history at smaller colleges and universities and aimed to strengthen the teaching of art history.

**JESSE WILCOX**, assistant professor of education, is the co-principal investigator and co-director on a grant funded by the No Child Left Behind Act Title II Programs: Improving Teacher Quality State Grant Program (Title IIA). The grant is a partnership between Drake, Grand View, and the Des Moines Public Schools. Essentially, Wilcox is providing a year-long math and science professional development program to 24 Des Moines Public School elementary teachers. **GV**

## FALL 2015 NEW FACULTY



Back row (left to right): Kristen Myers, assistant professor of nursing; Trisha Highland, assistant professor of nursing  
Front row (left to right): Dr. Scott Bull, assistant professor of business administration; Dr. Leahann Borth, instructor in biology; Ryan McCleary, assistant professor of computer science; Dr. Christopher Viesselman, assistant professor of kinesiology  
PHOTO: LACIE SIBLEY '07



Jess Short '16, center

**JESS SHORT '16** received two awards at the Iowa Campus Compact awards ceremony. She was recognized for her Newman Civic Award, which she was

presented earlier this year. She was also named ICAP (Iowa College AmeriCorps Program) Student of the Year-Honorable Mention.

**LEXI BERGLER '15** and **CARSON MESSENGER '15** received outstanding accounting and finance academic recognition at the Iowa Chapter of Financial Executives International (FEI) Academic Awards April 9. **GV**



President Kent Henning, Lexi Bergler '15, Carson Messenger '15 and Robert Ruisch, assistant professor of accounting



In September, GV welcomed 33 Danish students from Vejle, Denmark, for a weeklong visit. The students visited classrooms, gave a presentation about their country, learned about American customs and traditions, and toured local sites. They also participated in Homecoming festivities.

PHOTO: RACHELLE MITCHELL

# STUDENT CE

transformations

A CAMPAIGN FOR GRAND VIEW UNIVERSITY



**THE STUDENT CENTER CONSTRUCTION AND RENOVATION IS COMPLETE!** Students returned to campus this fall and were greeted by the newest addition to the campus landscape. The 67,500 square-foot structure sits on the east side of East 14th Street and is connected to the Rasmussen Center on the west side of the street by the 156-foot long Jensen Bridge, one of the longest skywalks in Iowa.

The building, a combination of new and renovated spaces, houses student support services, student life offices, the Bookstore, Viking Theatre, the Communication Department, and campus dining, as well as student lounge spaces and the photography gallery.

"The Student Center is the culmination of nearly 15

years of growth and marks the completion of Grand View's Campus Master Plan, developed in 2004," president Kent Henning said. "During that time, the campus has seen nearly \$60 million in capital expansion, thanks in part to many very generous contributions, including the lead donors to this effort. I want to thank our supporters on behalf of our students, who are the ultimate beneficiaries of their generosity."

The Student Center is open to community organizations for various functions when not in use for Grand View events and activities. It has already hosted numerous groups and several events.

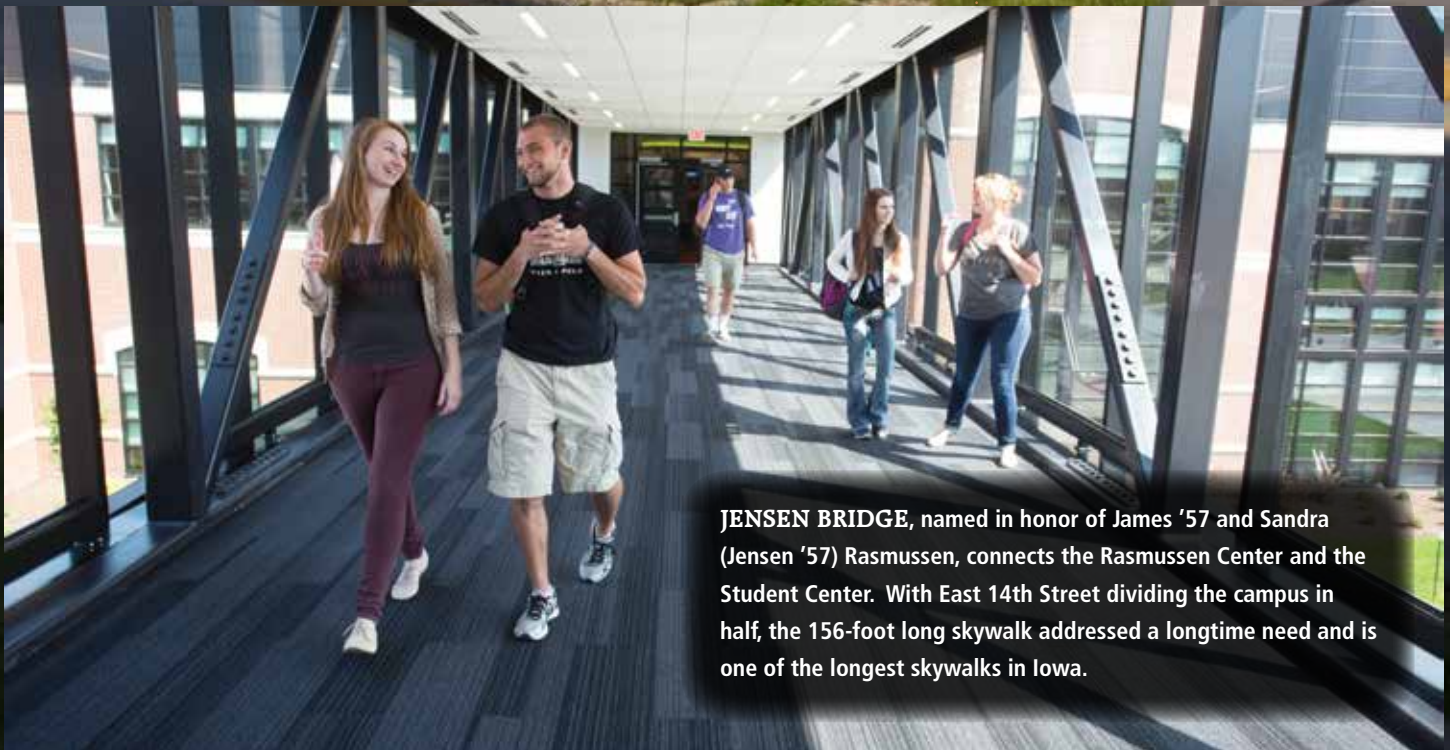
We invite you to take a peek inside here, or better yet, come to campus and take a tour!



# ENTER OPENS

ARTICLE BY LACIE SIBLEY '07, EDITOR

PHOTOGRAPHY BY JIM HEEMSTRA



**JENSEN BRIDGE**, named in honor of James '57 and Sandra (Jensen '57) Rasmussen, connects the Rasmussen Center and the Student Center. With East 14th Street dividing the campus in half, the 156-foot long skywalk addressed a longtime need and is one of the longest skywalks in Iowa.



Visitors are greeted at the **NATIONWIDE WELCOME CENTER** by our friendly desk associates and are provided information about campus and events.



**PRAIRIE MEADOWS PLAZA VIEW ROOM**, located on the second floor, serves as a meeting room with a beautiful view straight down Grand Central. Student groups meet and hold organization meetings. President Henning hosts lunches and gatherings in this space for the GV and area communities.

The **PRINCIPAL FINANCIAL CONFERENCE ROOMS** provide ceiling projectors and dropdown screens for presentations. Rooms may be divided into three individual rooms or one large space and are used as meeting spaces. They may also be reserved and rented by off-campus organizations.







**Hundreds of alumni, faculty, staff and friends made contributions totaling \$10 million in support of the Student Center. Some of those donors are featured...**

**DONOR PROFILE**

**KURT '88 AND LYNETTE RASMUSSEN**

Kurt grew up at Luther Memorial Church, located just across the street from Old Main. He was baptized there, confirmed there, and married there. Grand View was no stranger to him. Not only did



he attend GV, but his mother, father, a brother, his aunt and uncle, a grandfather and several great-uncles call GV alma mater as well. His father, Jim '57, always told him to know where he was donating money, because this makes the giver a good steward of how money is spent.

"I have lived a very fortunate life," Kurt said. "I had a family business to enter into after graduation; I received a great education paid for by my parents; I married a great life partner who makes me a better person; I have healthy kids who – although they fight with each other – are still pretty wonderful; and I feel an obligation to meet my expectation of doing good. Besides, the more you give, the more you receive."

As a member of the GV Board of Trustees, Kurt volunteered to spearhead fundraising for the Student Center. His love for GV goes deep, and he hopes that his family's involvement in giving and his Board service strengthen the institution even more. The Student Center seems to be a student-centered capstone to the beautiful campus.

"I believe one of the great aspects of a private liberal arts education is the ability to use and practice what you are learning with your peers on campus, and the Student Center provides a perfect location for that to take place. You really learn to be a lifelong learner in college. My vision for this project is to create a 'heart' of student life that ties together the campus."



The **PRAIRIE MEADOWS PHOTOGRAPHY GALLERY** showcases the talent and skill of our photography students, as well as professional photographers who are invited to exhibit their work. Welcoming gathering spaces for students provide soft seating and table space.

DONOR PROFILE

**SUZETTE (STEPHENS '66)  
JENSEN**



Suzette met her late husband, Ed '66, while they were participating in theatre as students at GV. She has a deep affection for GV, not only for bringing Ed into her life, but also for the experiences she had while attending. The final exam in

her favorite class, Oral Interpretation, was a 20-minute presentation with excerpts from a poem, a play, and a story that were connected by a theme – she received an A. She was a member of the choir, theatre and Show Stoppers – what is now the dance team. She was also the lead singer in a folk group composed of two baseball players and a friend still in high school at the time.

“There was little opportunity or space for students to gather. We had a student center, called Valhalla – it was a single-story building with concrete floors; it was dark and cold, and had tables, chairs, a juke box and a canteen. Food was limited to cold sandwiches, soup, pop, chips and candy bars, and it closed at 2 p.m.,” Suzette said. “The need for a student center existed for decades.”

When the possibility for the Student Center project was introduced, Suzette felt it was the appropriate time to make a larger gift, and naming the performing arts lobby seemed a fitting memorial. She is hopeful students will use the Student Center as a central gathering place to study, collaborate and converse.

“I think the name ‘Student Center’ says something about what this building means to the campus. It will become the center of campus life and a place that provides unity to the campus. Commuter students will no longer need to leave the campus to dine and will co-mingle with resident students for meals and other activities.”

DONOR PROFILE

**SCOTT '03 AND  
AMBER PRICKETT**



Scott is the president of Prickett Enterprises, a holding company for AdvoCare Diamond Distributorship. Together, with his wife, Amber, they feel giving back to his alma mater will inspire future

alumni to do the same. The Student Center is a great space for developing relationships and strengthening the GV community because relationships and connections after graduation are key components to success.

**CJ'S PLACE** is located on the first floor, just inside the main entrance. Tables, chairs, booths and lounge spaces are available for studying or just hanging out. Computers are available for student use. The space is named for former Board Chair Charles Johnson and his wife Jaina, longtime GV supporters, who honored family members with their gift.

The **JENSEN PERFORMING ARTS LOBBY**, located at the junction of the Viking Theatre and the Bishop Bookstore, is a gathering place for students and visitors to theatre events. The space is named in honor of late alumnus, Ed Jensen '66, by his wife Suzette '66.



The **VIKING THEATRE**, with thrust staging, was renovated in 2013 with new seating, lighting, glass railings and flooring, as well as a new scene shop and green room. Theatre productions and other gatherings are hosted here.





••• **GRAND VIEW EXPRESS** is a snack bar located in CJ's Place, offering on-the-go items, as well as hot and cold drinks.



••• The **UNITYPOINT CENTER FOR STUDENT ENGAGEMENT** is ideal for campus events such as the volunteer fair, study abroad information tables, and career fair events, among many others.



- **HANSEN STUDENT LIFE AND SUCCESS CENTER** was named for The Reverend Thorvald Hansen '46, and his wife, Johanne '47, through a gift from the Rasmussen family. It houses Student Life and Academic and Career Success Departments. This includes the **WAGENER STUDENT ORGANIZATIONS OFFICE**, named for Chad Wagener '86, and the **CARVER CONFERENCE ROOM**, named for Roy J. Carver.



- Offices within the Hansen Student Life and Success Center are named:  
**MIKEL STUDENT LIFE OFFICE**, for Alice '60 and Dan '60 Mikel  
**WILLITS STUDENT LIFE OFFICE**, for Martha Willits  
**BRODIE STUDENT LIFE OFFICE**, for Karen '70 and Mike '70 Brodie  
**COWNIE STUDENT LIFE OFFICE**, for James and Patty Cownie  
**PALMER STUDENT LIFE OFFICE**, for Gary '72 and Ginger Palmer  
**WEIDMAIER STUDENT LIFE OFFICE**, for Linda and Bill Weidmaier '67  
**KNAPP STUDENT LIFE OFFICE**, for William C. Knapp





**DONOR PROFILE**

**BILL '67 AND LINDA WEIDMAIER**

Bill, owner of Iowa-Des Moines Supply, is on the GV Business Advisory Committee, the Long-term Strategic Planning Committee, and has hired several GV students for summer positions within his company. He received the Distinguished Alumni Award in 2006 and feels strongly about giving back to the college that gave so much to him.



"We all know education is important and how it's the cornerstone of success," Bill said. "Grand View was a stepping stone in my education that opened doors for me to build a business career. I wish to reciprocate to GV as it played such an important role in my life by supporting the efforts to provide education for those who are in the same shoes I walked in nearly 50 years ago."

Bill fondly remembers his years at GV, especially an infamous spring break trip to Daytona and Ft. Lauderdale...

"A couple buddies and I stopped at Old Main to pick up three co-eds to drive 24 hours straight through to spring break in Florida. It was cold and snowing and numerous GV students surrounded our car and cheered us on, as if we were explorers leaving to discover a new world."

Bill's hope is for the Student Center to serve as the "personality" of the campus, a central meeting place for students to get acquainted, interact and share ideas. The Student Center is as important for college life as any college experience.

**DONOR PROFILE**

**BILL '58 AND MARILYN (ANDERSEN '59) GIFT**

Bill was from Dallas Center, Iowa, and Marilyn from the Danish community of Fredsville, Iowa, when the couple began attending GV. They are now both retired teachers from the Des Moines area and are members of the Danish Brotherhood.



"We have fond memories of our time at GV. The friends we made have become lifelong friends and we stay connected through Facebook, and by attending the Danebod Folk Camp, the Solvang Lecture Series, and get-togethers whenever possible," Marilyn said.

The Gifts see the Student Center creating a sense of community to the campus, a new image for GV, and a great addition to the east side of Des Moines.

"Our ultimate hope is that Grand View will continue to have a positive influence in the lives of all its students, and be a beautiful gathering place for students to share their visions and dreams."

The **SCHICKLER STUDENT LIFE RECEPTION AREA**, named for Claudia and current Board Chair Paul Schickler, is located inside the Hansen Student Life and Success Center.

Student Life staff and students meet in workstations throughout the **HANSEN STUDENT LIFE AND SUCCESS CENTER**.



DONOR PROFILE

## DAN '60 AND ALICE (OLSEN '60) MIKEL



Dan and Alice met at a GV freshmen mixer while playing a questions game. Dan was challenged with finding the person with the bluest eyes... well, he found Alice. And Alice was thrilled that Dan wasn't a

farmer! Currently, the couple resides in Minnesota, but their GV roots remain strong.

"We would not be who we are if it weren't for Grand View," Dan said. "GV means a great deal to us – it was life changing – and we hope today's students develop a commitment to lifelong learning, to be curious, to seek knowledge, and know that learning doesn't stop at graduation."

The Mikels gave to the Student Center feeling that students need a sense of belonging, a place to call their own. Their hope is that the Student Center enhances and connects the campus in a meaningful way.

"We are not people of great wealth, but we give because we truly appreciate everything GV has done for us. We are happy with the experiences we had at GV and welcome all the changes the campus is undergoing."

DONOR PROFILE

## ALAN '96 AND JENNIFER (WALKER '98) DOWNE



Alan and Jennifer own Hamco Walker Paper Company, and Jennifer is a part-time fitness instructor. Alan, natively from Canada, came to GV on baseball and academic scholarships, and Jennifer had

been awarded softball and academic scholarships as well. Unfortunately, softball funding was low that year, but GV worked with Jennifer to make her education at GV possible.

"Grand View made a huge impact on our lives," Jennifer said. "We not only met here, but we also grew up here. We learned responsibility, built some of the strongest friendships we have, and realized life is about experiences and not just reaching goals."

The Downes feel pride watching GV grow and change. As students, they didn't have the state-of-the-art facilities that students do today, but they enjoyed every minute of their time on campus. They have many great memories of the Student Center from their time at GV and hope the new addition will serve as the hub of where all the magic happens on campus.

"It's exciting that we can financially support the university as it betters the learning and living environments. The campus is beautiful, and it makes us proud to know that we were a part of it."

••• The **GORDON SMITH MEDIA LAB** contains 24 iMac computers housed in line-of-sight multifunction desks. Electric desks convert from traditional classroom tabletop space to computer workstations. Two HD projectors are operated from the instructor station.

••• The **BANKERS TRUST/RUAN STUDENT MEDIA SUITE** houses the communication department, including faculty offices and classroom space.



••• Named for Honorary Trustee Jim and Pat Luhrs, broadcast classes are taught in the **LUHRS VIDEO PRODUCTION STUDIO**, with hands-on learning experiences in the control room and TV studio with greenscreen.





- ..... Student radio hosts take advantage of state-of-the-art technology in the **POMERANTZ RADIO STUDIO**, producing the student-run radio station, Edge 88.1. The studio is named in honor of Marvin and Rose Lee Pomerantz.
- ..... The **STUDENT PUBLICATIONS OFFICE** is located within the Bankers Trust/ Ruan Student Media Suite. Students work on and produce The Grand Views, our on-campus student publication.



- The **DUPONT PIONEER FOOD COURT** offers a Mediterranean kitchen providing pizza and pasta dishes, a produce market and deli, an all-American grill, as well as an exhibition station.



- **CAMPUS SERVICES** is located in the Bishop Bookstore and serves students and the campus by providing postal mailing and printing needs.



- The **BISHOP BOOKSTORE**, named for Willard and Betty Bishop, is located on the first floor and provides students with textbooks and class supplies. GV clothing and gifts are also sold here.



- In the mid 1900s, the Valhalla snack bar was located near Old Main (Humphrey Center). **IRV AND ELIZABETH IBSEN'S VALHALLA**, now located on the second floor in conjunction with Carlson Commons, is additional dining space with tables and booth-style seating with views down Grand Central Plaza. The Rasmussen Foundation honors Elizabeth (Jensen '60) Ibsen and her husband, Irv '58, with a naming gift recognizing GV's past.







**DONOR PROFILE**

**CHAD WAGENER '86**

While Chad attended Grand View, he put his leadership skills to use as a member of Viking Council. After graduation, he enrolled at the University of Iowa College of Dentistry, and in 1990, he established a dental practice in his hometown of Ankeny and has now been practicing for 25 years. He is very active with the Iowa Dental Association, Iowa Academy of General Dentistry, and a member of the Academy of Laser Dentistry and the American Academy of Cosmetic Dentistry.



"I believe in lifelong learning," Chad said. "I have been teaching at the University of Iowa College of Dentistry as an adjunct associate professor for 11 years and average more than 75 hours of continuing education each year. Recently, I received my fellowship in the Academy of General Dentistry. Grand View and my professors helped make me who I am today; therefore, giving back so that others may follow their dreams is important to me."

The Student Center project is important because it represents a place for students to gather, study, and be involved with the school in many different ways. Chad hopes the Student Center brings even more of a sense of community, belonging and pride in GV.

"I think the Student Center and the campus as a whole is a huge asset to Des Moines and a real head-turner. When I think back to my days at Grand View, I will always remember how my instructors took an interest in me and my education."



..... **CARLSON COMMONS** is the main dining center for campus, located on the second floor and just off the Jensen Bridge. It is perfect for students to meet up with friends, study and dine. It is named in honor of Dean and Sandra Carlson, active members of the GV community.



..... The **KITCHEN** is equipped with double cooking units between the serving area and the main kitchen. Automatic hoods turn on when heat is detected from a cooking unit. Two walk-in coolers and one large walk-in freezer provide food storage. Several mobile hot boxes and refrigerated units are available for catering outside the dining area. Ample space in the cooking area allows for three island prep stations, which consist of four stainless steel tables per island. Approximately 20-25 kitchen staff can work simultaneously.

# A MASTERFUL

BY SANDRA FLAHIVE, CONTRIBUTOR

If Anne Speed had adhered to the adage “Spare the rod and spoil the child,” her son, Bob, might have blazed a different trail through life. As it was, she was relentless in her insistence he faithfully practice the piano – “OR ELSE!” With that encouragement, by the tender age of seven he already was a disciple of discipline, perseverance, and perfection.

His mother’s admonitions weren’t necessary. On the family’s frequent visits to his aunt and uncle’s home, young Mr. Speed quite naturally gravitated to the hefty upright piano in the living room. While the adults huddled around the kitchen table, the lad at the piano happily explored the black and white keys, thrilled with the sounds emanating from the belly of the beast.

Thus was the beginning of his lifetime romance with music that eventually broadened to include great literature, fine art, and the aesthetic world in general. Far down the road, the primary beneficiary of all this appreciation would be Grand View College.

Robert Malcolm Speed was born in 1930. Proud of his Scottish heritage, he is quick to point out that his first and middle names are those of ancient Scottish kings. Under the watchful eye of Anne and his father, William, he and his sister, Kathryn, grew up in Knoxville, Iowa. For both children, piano lessons were an essential part of life.

By the time he was 15, Speed and his sister had become accompanists for most musical events in Knoxville. “Why do the Speed children do all the piano playing in town?” queried one resident, to which their mother responded forthrightly, “Because they are the best.”

As a sophomore, Speed began playing for church services, an activity that would become part of his Sunday ritual for the following 68 years. Wistfully, he recalled, “I wanted to play the organ, but there wasn’t one in Knoxville to practice on, so I bought a book that gave organ-

---

*“Bob always represented the very best of what teaching and learning at Grand View is all about.”*

*– Dr. Ronald Taylor  
retired provost and vice president for academic affairs*

---

playing instructions.”

Before long he helped overcome the deficiency. The talented musician also played in a local band – The Tophatters. In a rare move for any teenager, he contributed the money he made as a Tophatter to the church organ fund, and before graduating Knoxville High in 1948, Bob Speed was playing a spiffy new organ at the First Christian Church, self-taught via a how-to manual.

Had Speed known upon entering Drake University what an influence Dr. Frank B. Jordan, the stately and imposing head of the Fine Arts Department, would have on his life, he probably would have quaked in his new, going-to-college boots. But the gods smiled on the new enrollee.

“I was fortunate to have Dean Jordan as my organ instructor all through college,” stated Speed, who earned both his bachelor and master of music education degrees from Drake. “In addition to being my teacher, he and his wife, Alice,

an organist and composer, became my mentors and lifelong friends.”

If Drake and Dr. Jordan prepared Speed for his career, Grand View College, a two-year institution at the time of his hiring in 1952, made him into a dedicated, devoted, and beloved

professor for the following 44 years.

However, before he could apply for the nine-month, \$1,800 teaching contract, Speed had to find Grand View. “I had no idea where the campus was,” he confessed.

Nevertheless, once he was hired by Acting President A. C. Nielsen, he immediately felt at home. “I liked the college and teaching from the get-go,” he reflected. “From the time I started until I retired in 1996, I had a wonderful family of colleagues.” With a twinkle in his eye he added, “And for the most part,

---

••• The **SPEED LYCEUM**, named for former GV professor and long-time Chair of the Humanities Division, Robert Malcolm Speed, is ideal for large group meetings, campus events and concerts.





# EDUCATOR

the students were excellent, too. They were mature and full of good humor, which made teaching fun.”

At first his academic load was a nightmare. “I was teaching music theory, music appreciation, piano, organ, and English Literature, in addition to directing the 60-member choir, which met daily at 5 p.m.,” he explained. “I felt totally overwhelmed.” Still, the mention of his choirs makes him smile. “Those students were always so good – but so ornery,” he laughed. “I always held my breath, afraid they would pull one of their pranks in the middle of a performance. They never did, but they scared me to death.”

With the close of each academic year, Speed was on the move. Two summers he attended Columbia University, studying under renowned concert organist Marilyn Mason. Two summers his pursuit was English Literature at the University of London, the city to which he took Grand View students multiple times. Throughout his career he played organ concerts, the most notable at Copenhagen, Denmark Cathedral, and traveled widely.

While his talents and interests were

always evident on campus, he extended them to the Des Moines community as well. For 48 years he served as church organist and choir director at Central Presbyterian Church. In addition, he gave organ lessons, judged countless music and poetry contests, and served on many civic boards. In his “spare” time he composed and published 30 pieces of flute and organ music.

Inevitably, the ebb and flow of life at Grand View brought changes during Speed’s four-plus decades of teaching. The names and number of courses he taught vacillated; curriculums were adopted and vanquished; buildings were built, remodeled, and razed; presidents and provosts came and went, as did faculty and thousands of students, many of whom still regularly contact him.

One thing remained constant, however, according to Dr. Ronald Taylor, provost from 1990 until his retirement in 2008. “Bob Speed was always a masterful educator. His classroom was characterized by high academic standards and an environment that challenged students to achieve their full potential,

to become actively engaged in the process of learning, and to experience the joy and fun of creative thinking. Bob always represented the very best of what teaching and learning at Grand View is all about.”

For friends and colleagues privileged to know Speed well, it always has been evident that behind the dignified and proper exterior is a perpetually impish, youthful soul with a delightfully wicked sense of humor, someone whose likes and dislikes run the gamut. He’s crazy about William Shakespeare and Mel Brooks, Wolfgang Amadeus Mozart and Irving Berlin, Golden Girls



Bob Speed, as pictured in the 1967 VIKING.

television reruns and refined British plays. He loves Françoise Gilot art, Cadillacs, real ink pens, baseball, and dogs. He loathes sloppy dress, bad grammar, and laggards.

His students knew Professor Speed well, too – knew, understood, and appreciated their teacher and friend. This was made clear in a glowing tribute that captured his very essence as it was then... and remains today.

*The yearbook staff dedicates the 1967 VIKING to Robert Speed in gratitude for the 15 years he has devoted to the aesthetic development of Grand View students. He has observed and helped Grand View grow. We respect his gift for friendly interchange with his students and his aversion to sloppy posture, off-key singing, censorship, and poor diction. His extensive knowledge of English Literature, combined with his keen musicianship, will always be remembered by those who had the privilege of studying under him.*

What his students did not know was that all this possibly began with just two words: “OR ELSE!” **GV**



## BANNER YEAR FOR SPRING SPORTS



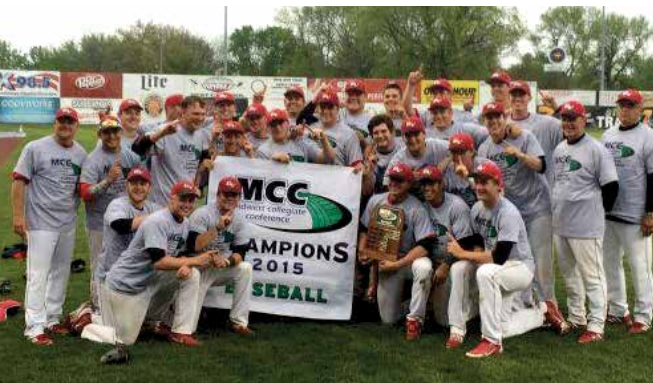
Three GV teams collected Midwest Collegiate Conference banners to punch tickets to the postseason, and the track & field teams qualified 14 athletes for nationals as GV posted another very successful spring season.

The men's golf team won its sixth-straight MCC Championship. Grand View claimed the top two spots with Jay Monahan (Wichita, Kan.), medalist, and just one stroke behind was runner-up Tyler Christians (Urbandale, Iowa). Christians was named the MCC Player of the Year and Head Golf Coach Chris Winkel was named MCC Coach of the Year. The team finished 12th overall at the NAIA Championships.

The softball team won both the MCC regular season and tournament titles, and made the program's third national tournament appearance. The women competed in the opening round of nationals in Oklahoma City. Jessica Grochala (Des Moines, Iowa) was voted the league's Player of the Year, Claudia Farrell (Des Moines, Iowa) was voted Pitcher of the Year, and Head Softball Coach Lou A. Yacinich was named Coach of the Year. The season ended with Grochala, Farrell, and Abbey Wilmes (Des Moines, Iowa) earning All-American recognition.

Head Baseball Coach and MCC Coach of the Year Lou Yacinich, Sr., led the baseball team to conference regular season and tournament titles. The Vikings competed in the NAIA Championship opening round in Grand Rapids, Mich., and won two of four games – both against higher seeded opponents.

The men and women's track & field teams had record-setting performances throughout the NAIA Championships in Gulf Shores, Ala. Grand View had six All-American performances – MCC Field Athlete of the Year Val Veiock (West Des Moines, Iowa) in the shot put, discus, and hammer throw; Kenny Simmons (St. Louis, Mo.) was national runner-up in the triple jump; Taylor Wells (Des Moines, Iowa) in the discus; and Jena Krebs (Washington, Iowa) in the hammer throw. **GV**



Top: Softball competes in the opening round of the National Tournament.  
Bottom: Baseball earns banner after winning the MCC Tournament to qualify for nationals.

## FINAL MCC COMMISSIONER'S CUP WIN



Men's golf earns banner after winning the MCC Championships to qualify for nationals.

The final Midwest Collegiate Conference Commissioner's Cup trophy will find its home in Des Moines as GV won it for the 2014-2015 athletic season. Grand View took home five of the last six cups, winning this year's title with 900 points and sport crowns in men's soccer, women's basketball, women's bowling, baseball, softball, and men's golf.

The Commissioner's Cup honors all-around athletic excellence among the MCC's seven member schools. It is awarded to the institution with the

highest cumulative score as determined by a rating system that includes points awarded at the end of the regular season of each of the 17 championship sports sponsored by the MCC. Scoring is based on a scale awarding points per finishing position, with a bonus awarded to conference tournament winners.

St. Ambrose had the highest title tally (eight) to finish second with 835 points. The Fighting Bees managed trophies in men's cross country, women's cross country, women's basketball, men's bowling, men's indoor and outdoor



Left: Kenny Simmons, national runner-up in the triple jump at the NAIA Championships in Gulf Shores, Ala. Right: All-Americans, Jena Krebs (left) and Val Veiock (MCC Athlete of the Year), with Viking Throws Coach Seth Roberson.



## GV FINISHES 14TH IN LEARFIELD DIRECTOR'S CUP STANDINGS FOR ATHLETIC EXCELLENCE

Grand View finished the 2014-2015 year 14th of 185 NAIA institutions in the Learfield Sports Director's Cup standings. The Vikings collected points for high national finishes in baseball (50), men's golf (54), softball (25), women's outdoor track & field (63), football (60), men's soccer (70), women's volleyball (37.5), wrestling (100), men's indoor track & field (48.5), and women's indoor track & field (60), accumulating 568 points for the year.

track & field, and women's indoor and outdoor track & field.

William Penn, headed by a women's golf crown, was third with 625 points, while Mount Mercy was a close fourth with 620 points (men's basketball title).

Clarke did not have a regular season crown, but still finished fifth with 525 points. Viterbo earned the volleyball title en route to sixth place (455 points). AIB, which sponsored only 11 sports, nearly overtook Viterbo with sport wins in women's soccer and baseball for 450 points. **GV**

The Learfield Cup was developed as a joint effort between the National Association of Collegiate Directors of Athletics (NACDA) and USA Today. Points are awarded based on each institution's finish in up to 12 sports – six women's and six men's.

MCC Academic All-Conference Awards were given to 160 GV student athletes in June. GV had the highest number of honorees in the league. **GV**

### Final 2014-2015 Commissioner's Cup Standings

(sports titles in parenthesis)

1. Grand View – 900 points (MS, WBB, WBO, SB, BS, MG)
2. St. Ambrose – 835 (MXC, WXC, WBB, MBO, MITF, WITF, MOTF, WOTF)
3. William Penn – 625 (WG)
4. Mount Mercy – 620 (MBB)
5. Clarke – 525
6. Viterbo – 455 (VB)
7. AIB – 450 (WS, BS)

## 28 ATHLETES NAMED NAIA SCHOLAR-ATHLETES

The National Association of Intercollegiate Athletics (NAIA) announced its 2015 Spring Daktronics-NAIA Scholar-Athletes. Student-athletes are nominated by their institution's head coach and must maintain a minimum grade point average of 3.5 on a 4.0 scale and achieve junior academic status in order to qualify for the honor.

**BASEBALL:** Nick Fure, Kyle Mesecher, Jordan Ross, Jake DeBondt, Jordan Potts

**MEN'S GOLF:** Tyler Christians, Kyler Ludwig, Jay Monahan, Tyler Smith, Nate Webb, Alex Wendell, Ben Wollam

**WOMEN'S GOLF:** Korbyn Bolton, Ashley Hemphill, Kenzie Rottinghaus

**SOFTBALL:** Justina Glick, Dani Hubbard, Jessica Stickel, Abbey Wilmes

**MEN'S TENNIS:** Quyen Diep, Anthony Forcucci, Luke Norris

**WOMEN'S TENNIS:** Lauren Lightner, Angela Nims

**MEN'S TRACK & FIELD:** Dallas Franks

**WOMEN'S TRACK & FIELD:** Alyssa Cunningham, Kalli McCann, Val Veiock **GV**

## 11 PROGRAMS EARN NAIA SCHOLAR-TEAM AWARDS

The National Association of Intercollegiate Athletics (NAIA) announced the 2014-2015 NAIA Scholar-Teams. For a team to be considered, it must have a team minimum 3.0 grade-point average (on a 4.0 scale), and include all eligible varsity student-athletes.

Grand View had eleven teams earn NAIA Team-Scholar status: baseball, women's basketball, women's cross country, men's golf, women's golf, women's indoor track & field, women's outdoor track & field, women's soccer, softball, women's tennis, and women's volleyball. **GV**

# HOMECOMING '15

BY LAINE MENDENHALL-BUCK '92, DIRECTOR OF ALUMNI RELATIONS

Grand View couldn't have asked for more picture-perfect weather as we celebrated Homecoming 2015, September 25-27. Friday's breakfast and Alumni College saw record numbers, including several members from the Class of 1965. Mark Daly, director of international studies, led the alumni college session with an overview of how the new partnerships with Denmark and China bring students to campus. As alumni toured campus, they walked across the new Jensen Bridge to the Student Center and dined with students in the Carlson Commons. The afternoon included a reunion, fun classes without quizzes, and Songfest. A special choir alumni reunion was part of this year's Homecoming, and Dr. Kathryn Duffy, professor of music, led several choir rehearsals in preparation for Sunday's worship service at Luther Memorial Church.

Friday evening's capstone event was The Grand Gala: Grand View's Toast to Transformations. More than 220 donors and guests were honored for their contributions to the Student Center and the Jensen Bridge. The reception included interactive tours with student performances, and Carlson Commons was elegantly transformed for the black-tie optional celebration. Des Moines jazz vocalist and promoter, Max Wellman, topped off the evening during the dessert hour.

Saturday's festivities were kicked off with the Viking 5K. More than 160 students, alumni and friends registered for the run through Union Park. Daniel Pinkerton '98 came in first place with

an 18:04 finish. Viktor the Viking and GV cheerleaders encouraged youngsters during the traditional Kid Trot following the 5K. A packed tailgating party with students, alumni and friends – complete with an aebleskiver eating contest – preceded the Vikings' triumph over Missouri Valley College with a resounding 40-14 win. Both men's and women's soccer hosted Homecoming matches later in the day.

The weekend came to a close with Sunday morning's church service, which welcomed the GV choir, alumni choir, and instrumentalists for a musical performance. The packed sanctuary of more than 200 guests enjoyed a complimentary brunch after the service. A final tradition...the Grand View alumni softball game... rounded out the weekend. **GV**



Clockwise from top: Runners participate in the Viking 5K; tailgaters enjoy festivities before the football game; donors celebrate the Student Center during The Grand Gala; Angela Lose '18 interviews Trustee Jim Noyce during The Grand Gala.

PHOTOS: BRIAN PATTERSON '95, DOUG WELLS, STEPHEN WINZENBURG



**Save the date...**

# HOMECOMING '16

**September 30-October 2**



★★★  
GRAND VIEW NATIONAL  
**ALUMNI**  
COUNCIL

As a graduate from the 90s, my campus experience was much different than what students are offered today, and I'm ecstatic to be a part of a campus that is growing and thriving on many levels.

GV recently completed a 15-year campus master plan, which saw the development of several new buildings, including the opening of the new Student Center and Jensen Bridge. I am amazed at the facilities that have sprung up since my time here.

In the spring GV magazine, Director of Development Brian Patterson reminded us that even though the infrastructure has changed, GV's passion remains the same. I would echo his thoughts, and encourage you to visit, but visiting is only the first step.

Our students need support from people like you. Here are a few ways you can get involved:

- Participate in department lunches where alumni offer feedback about their fields of expertise.
- Provide job shadowing for students seeking experience.
- Connect with alumni through the National Alumni Council.
- Hire a GV student or graduate for an internship or career position.

Time, talent, treasures. These three terms mean so much, and you have probably been asked to give one or more within your place of work or community. As a fellow alumna, I ask that you consider offering a slice of each.

Ready to jump in? Email [alumni@grandview.edu](mailto:alumni@grandview.edu)!

Laine Mendenhall-Buck '92  
Director of Alumni Relations

## 1964

**GLEN MADSEN '64**, retired pharmacist, and his wife, **KAREN (COOPER '65)**, enjoy traveling and spending time with their six grandchildren.

## 1967

**GEORGE K. YOUNG, JR. '67** retired in 2012 after 24 years in the army, four years teaching high school, and 15 years as a master's-level mental health therapist.

## 1972

**KIM FRANCISCO '72** was reappointed to the Iowa Natural Resource Commission.

## 1977

**TOM MURPHY '77** was named Clive Citizen of the Year by the Clive Lions Club, along with the Clive Chamber of Commerce, in February.

## 1987

**MICHELLE (WIMMER '87) SANDERS** is employed with Wolfe Retail Services.

## 1992

**LAINA MENDENHALL-BUCK '92** is the director of alumni relations at Grand View. She came to GV from Visionary, a web development firm in Des Moines where she oversaw a team of designers and web developers. She has served on many community boards including the East Des Moines/South Des Moines Chamber, Greater Des Moines Leadership Institute, and Children & Family Urban Movement.

## 1998

**SAMANTHA (KINNEY '98) COLE** graduated in December 2013 with an MSN from East Carolina University and is working as ANP for ECHI Advanced Practice Group (CT Surgery).



## GV Plates!

**JEFF OSTRANDER '92**, 1967 Mustang GTA Convertible sportin' GV Plates. Order your GV license plates on the DOT website at [www.iowadot.gov](http://www.iowadot.gov).

## 1999

**DANA BOONE '99** is the founder and editor-in-chief of Epiphany365, LLC.

**BRIAN HOUGH '99** completed his Ph.D. in mass communication from Scripps College of Communication at Ohio University. He resides in Fargo, N.D., with his wife and works at North Dakota State University.

## 2004

**JILL NOWADZKY '04** married Chad Montegna October 18, 2014. She is a legal assistant at UnityPoint Health and Chad is a supply manager at John Deere.

**BEN SCHUH '04** painted the new mural at the Patty and Jim Cownie Cultural Center during this year's Iowa State Fair.

## 2006

**TIM VASKE '06** is pursuing a master's degree in public administration at the University of Nevada, Las Vegas.

## 2009

**ANDREW DAVIS '09** had a photo accepted into the 2015 Iowa State Fair Photo Salon.

## 2010

**BAILEY (SCHECHINGER '10) SCHREIBER** and her husband, Brandon, own a chiropractic office in Panora, Iowa, called Schreiber Family Chiropractic.

**BRYAN WYNVEEN '10** graduated with his master's degree in history from the University of Northern Iowa. >>

## 2011

**NICOLE CREASON '11** had a photo accepted into the 2015 Iowa State Fair Photo Salon.

**HALLIE (BEELER '11) HAVARD** works in retirement and investment services for Princor, developing communications and product marketing plans. Previously, she worked in marketing for Urgent Team Immediate Family Care in Nashville, Tenn.

**EMILY HURM '11** graduated with a masters in Chinese acupuncture and oriental medicine from Northwestern Health Sciences University in Bloomington, Minn. She is a licensed acupuncturist in Iowa and practicing at the Acupuncture Wellness Center and Allergy Clinic of Iowa in West Des Moines.

**AUSTIN STRAWHACKER '11** is the director of annual giving for Drake University Athletics.

**DANA WINGERT '11** was named the new Des Moines police chief.

## 2012

**A.J. KRIST '12** married Gracie Kuntz September 6, 2014.

**KATHRYN SANDIE '12** is the assistant vice president and branch manager at Central Bank.

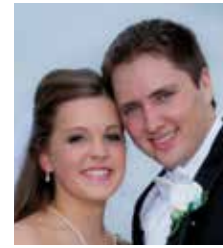
**COURTNEY TOWNSEND '12** had a photo accepted into the 2015 Iowa State Fair Photo Salon.

## 2013

**STEPHANIE IVANKOVICH '13** is the editor of The Perry Chief.

**HEIDI HOYT '13** is a customer service associate for Wellmark Blue Cross Blue Shield.

**ANNALIZA JOHNSTONE '13** graduated in May from the nurse residency program at the VA San Antonio, Texas.



## 2014

**BENJAMIN GARRISON '14** married **BRITTANY MOORMAN '15** July 26, 2014.

## Future Vikings



**SARAH (BATTIN '02) LOPEZ** and husband, Sonny, a daughter, Gianna Rae, born November 5, 2014.

**WESLEY BROOKS '04** and his wife, Kelly, a son, Webber Hayden, born November 26, 2014, 8 lbs 2 oz, 20.5 inches long. Brooks was promoted to assistant vice

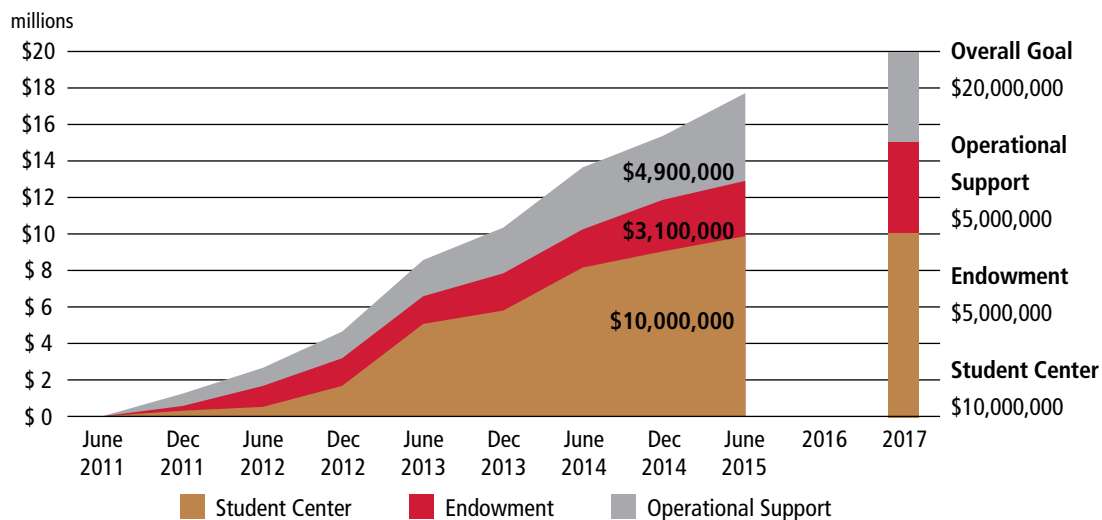


**JOHN BRYJA '15** received the Award of Achievement from the Iowa Motion Picture Association for a video he produced about GV student, Jenny Jones. Bryja was nominated in the documentary category and attended the IMPA's 24th Annual Awards Gala at the Pella Opera House. Bryja's documentary 'Highway 6 & Moscow' follows Jones as she tracks down details of her parents' death in a car accident 20 years ago and connects with the two men who rescued her from the car when she was just two months old. Bryja and his parents are pictured at the award ceremony.

*Thank you  
for helping make  
Grand View's  
new Student Center  
possible!*

## transformations Campaign Progress

A CAMPAIGN FOR GRAND VIEW UNIVERSITY



*Make a gift today!*

Visit [grandview.edu](http://grandview.edu) >



president for student life at Wartburg College, and he successfully defended his Ph.D. dissertation at Iowa State University.



**LINDA MAROVETS '08** and husband, Eric, a son, Brody Benjamin, born November 20, 2014, 7 lb 10 oz, 20.25 inches long. Brody joins big brothers Carter who is four, Gavin who is three, and Spencer who is 1.



**JENNA (JACOBS '10) COMES** and husband, Daniel, a daughter, Morgan, born March 17. Jenna is employed at Mapleton Press.



**NICOLE (WELLS '11)** and **MICHAEL BENNION '12**, a daughter, Sophie Michelle, born December 3, 2014, 5 lb 11 oz, 20 inches long. The couple married October 19, 2012, and moved to Utah.

## In Memoriam

**MARIE (SORENSEN '40) KJOLHEDE** passed away March 30. She is preceded in death by her husband, **Kenneth Kjolhede '39** and brother, **Clarence Sorensen '47**.



**KELLEY JOHNSON '15** was second runner-up in the 2015 Miss America pageant. Miss Colorado gained national attention for her monologue about the importance of being a nurse. She also appeared on the Ellen DeGeneres show and Ellen, along with Shutterfly, presented her with \$10,000 to go toward graduate school.

**ELNA NELSON CRICK '43** passed away January 27.

**CARMA (ANDREASEN '43) HANSEN** passed away October 27, 2014. She is survived by her husband, Donald, four daughters, four grandchildren, and a brother, **Ottar Andreassen '50**.

**LILIAN (FEDDERSEN '45) BARNARD** passed away April 8.

**LILLIAN C. (VIUM '45) MATHISON** passed away June 13.

**REVEREND HAROLD E. OLSEN '45** passed away May 10. In 1969, he was honored by GV for distinguished service to the college. He is survived by his wife, Charlene; his son, Carl; sister, **Alice (Olsen '47) Humphrey**; four step-children; five step-grandchildren; one step-great-grandchild; and nieces and nephews. He was preceded in death by his first wife, **Lois (Jensen '46)** in 1993.

**DR. MARVIN P. JESSEN '47** passed away July 13. Jessen was a GV professor of biology (1951-1988) and was given

emeritus status after he retired.

**VERA B. (BRITTON '48) KENDALL** passed away January 8.

**WILMER N. LARSEN '48** passed away June 28. He is survived by his wife **Inger (Jensen '49)**, six children, eight grandchildren and two great-grandsons, sisters **Margaret (Larsen '52) Mills** and **Dorthea (Larsen '44) Adaskin**, and brothers **Alfred '40** and **Donald '53**. He is preceded in death by his brother, **Otto '42**.

**HARLAND HAYEK '49** passed away April 16. He is preceded in death by his wife, **Sylvia (Jorgensen '49)**.

**HARRY SINK '50** passed away August 28.

**RAYMOND JOHNSON '51** passed away March 27 in Luck, Wisc. He met his late wife, **Alma (Grumstrup '51)**, at GV and they were married in the West Denmark Lutheran Church in Wisconsin. He is survived by their three children.

**WAYNE NELSON '51** passed away June 11.

**RAYMOND SUNDBERG '51** passed away August 2. >>

This beautiful facility was not possible without the support of generous friends and alumni, like you.

However, there is still more to do! So much of the work done on Grand View's campus could not be done without your generosity. Consider helping to build a GV legacy by supporting student scholarships, new technology and campus maintenance through the GV Fund.

## ALUMNI & FAMILIES AT DISNEY ON ICE

WEDNESDAY, NOVEMBER 25 • 7:00 P.M.

WELLS FARGO ARENA

Tickets are \$15 per person in 100-level sections (kids under age two are free).

A limited number of seats are available.

Order your tickets online today at [www.grandview.edu](http://www.grandview.edu) > Alumni > Alumni Events.



# Cooking with Alessandra Alumni Class

Monday, January 18, 2016 • 6:00 p.m.  
333 E. Grand Ave, Des Moines

Come learn all the secrets of focaccia bread! Make your dough and experiment with different toppings. This hands-on class will be small enough to encourage questions and conversation. \$35 per person. Wine will be offered during the evening.

Register online at [www.grandview.edu](http://www.grandview.edu) > Alumni > Alumni Events.

**LOUIS P. BREDESKY, JR. '54** passed away May 10. He is survived by his wife, **Elaine (Nelsen '54)** – whom he met at GV, their three children, and four grandchildren.

**RODNEY LEE MURTLER '54** passed away July 16.

**EDWARD RANNEY '56** passed away June 23.

**THEODORE DOGGETT '58** passed away February 24.

**JUDITH E. (HOLSMAN '61) BARKER** passed away April 30.

**LINDA SUZANNE (WHEELDON '68) HILLS**, passed away in June. She was a career employee with the United States Department of Veteran Affairs. She is survived by her daughter, **Tiffany (Blankenship '95) Vasey**, and son-in-law, **Jaret Vasey '95**.

**MICHAEL G. MULLIN '71** passed away February 5.

**ALVA BATTIN '72** passed away January 16. He was an avid cyclist and enjoyed spending time in Sahuarita, visiting his three granddaughters. He is survived by his wife, and daughters **Sarah (Battin '02) Lopez** and **Ellen Battin**.

**CARL FENTON '74** passed away June 1.

**MICHAEL D. HARPER '84** passed away May 9. He attended GV on baseball scholarship as a second baseman.

**JANELL A. JENSEN '87** passed away June 30. She was an RN at various hospitals and senior care facilities in Iowa, and was committed to both the Danish Brotherhood and the Danish Immigrant Museum in Elk Horn, Iowa. She is survived by her son, **Jorgen**, and daughter, **Gretta**.

**CYNTHIA (BAKER '88) JOHNSON** passed away May 30.

**CHRIS KUPER '88** passed away January 7.


**JON G. RICHESON '88** passed away February 21.

**SHARON L. KOURI '90** passed away June 7. She was an accomplished mixed media artist, an active community volunteer, and world traveler. She is survived by her husband, **Michael**, three daughters, and four grandchildren.

**ANNA MARIE DURR '95** passed away July 18. She earned her BSN from GV and was a veteran Captain of the Army Nurse Corps, serving in Japan and Vietnam. She worked with Iowa Shares in Thailand and with Aramco in Saudi Arabia. She was a nurse at the Meskwaki Settlement in Tama, Iowa, and at various hospitals.

**AMANDA (HALL '05) MORRILL** passed away June 26. She received her degree in biology and went attended Mercy College to pursue her career as a radiology technician at Mercy Hospital. She is survived by her husband, **Matthew**, and their son, **Landon**.

**NANCY JEAN KRUSE-BOCK '06** passed away August 16. She received her nursing degree from GV and was dedicated to her job at Broadlawns Medical Center and Mobile Crisis.

**REV. DONALD SONDRÖL** passed away March 23. He was a GV campus pastor. 

## WHAT'S NEW WITH YOU? Something new in your life? We'd like to share your news in the GV Magazine Alumni News.

Send your information to GV Magazine, Lacie Sibley, 1200 Grandview Avenue, Des Moines, Iowa 50316 or email [lsibley@grandview.edu](mailto:lsibley@grandview.edu).

Full name \_\_\_\_\_ Maiden name \_\_\_\_\_ Last year at GV \_\_\_\_\_

Spouse full name \_\_\_\_\_ Maiden name \_\_\_\_\_ Last year at GV \_\_\_\_\_

Street address \_\_\_\_\_

City \_\_\_\_\_ State \_\_\_\_\_ Zip \_\_\_\_\_

Email \_\_\_\_\_ Phone \_\_\_\_\_

**Please put a check by the news you want to share.**  New job  Promotion  Retirement  Achievement  Marriage  Birth/Adoption  Death

**Photos are welcome and will be used on a space-available basis.**

Details \_\_\_\_\_

**Please send GV magazine in the following format:**  Electronic (Please include email address above.)  Print



# TO PROTECT AND SERVE

BY LACIE SIBLEY '07

Recently named Des Moines Chief of Police, Dana Wingert '11 was a construction worker prior to working his way up the ranks to this top position. Thanks to his wife, Tami, who took it upon herself to help Wingert establish a career rather than a job, he finds himself with more responsibility, more officers reporting to him, and a city that relies on him to keep it safe.

"I was working in the construction field in 1991 and my wife found the police officer hiring announcement and filled out the application," Wingert said. "Prior to this I had no inclination of entering the law enforcement field. It seems to have worked out, and now I couldn't imagine doing anything else."

Grand View's reputation, flexible scheduling, small classes and diverse population were incentive enough for Wingert to pursue his criminal justice degree.

But it was through these interactions that he grew, opened his mind and learned to accept, understand and value many different perspectives, which are key components to how he manages his personal and professional relationships.

After nine years of service, Wingert was promoted to Sergeant, which started his move up through the ranks of the department. During the next twelve years, he was promoted to Lieutenant, Captain and Major – each promotion coming with new assignments, responsibilities and challenges.

"Experience, work ethic and the ability to lead are important characteristics in this process. I had worked in virtually all areas of the Department and had a solid grasp on the operations of the organization," Wingert said. "Prior to applying for Chief of Police, I consulted many of my mentors about my ability to lead the organization, and after a rather



Dana Wingert '11

---

*"I believe that a degree from a reputable institution means something to prospective employers and I know it played a major role in my career advancement. I could not have asked for a better education."*

*– Dana Wingert '11  
Des Moines Chief of Police*

---

"I believe that a degree from a reputable institution means something to prospective employers, and I know it played a major role in my career advancement. I could not have asked for a better education," Wingert said.

While attending GV, Wingert was also working for the DSM Police Department. The classroom interaction provided great opportunities to hear the thoughts and feelings of others, many of which were contrary to what Wingert believed to be happening in the world.

intense process I was selected by the City Manager as Chief in February."

Wingert's position comes with many challenging aspects. Staying on top of training, tactics and technology is nearly impossible. Public trust is another issue not taken lightly. The Department's outreach efforts continue to expand and allow more interaction with citizens in the hope of building relationships and a common understanding.

"Public service does not come with bonuses, corner offices and stock options

for high performing employees. The motivation and personal satisfaction is simply knowing that what you do on a daily basis is truly making a difference in our community," Wingert said. "Officers routinely interact with people experiencing the worst moments in their lives, and to know you played a part in helping them get through it is truly rewarding. When citizens call the police, it is generally because they have no other place to turn. We do not take this responsibility lightly."

Wingert added that as chief of police he is proud of the men and women of the Des Moines Police Department and the city they serve. They continually strive for improvement based on the needs and expectations of the community. Working relationships turn into friendships; and after that, everything else becomes much easier.

"And, having said all this," Wingert added, "it is not forgotten that Grand View played a pivotal role in defining who I am, both personally and professionally." **GV**

**CHANGE SERVICE REQUESTED**

NOTE TO PARENTS: If this issue of GV Magazine is addressed to your son or daughter who no longer lives at your address, provide a change of address to Grand View. Contact the Alumni Office by mail, email [alumni@grandview.edu](mailto:alumni@grandview.edu) or phone at 515-263-2957.



# GRADUATE STUDIES AT GRAND VIEW

## **Grand View offers four graduate degrees:**

- \* **Master's in organizational leadership**
- \* **MSN with options for the Clinical Nurse Leader and nursing education**
- \* **Master's in education with a focus on teacher leadership and urban education**  
Graduate-level endorsements in: Reading, STEM, Instructional Strategist I, and English as a Second Language (ESL)
- \* **Master's in sport management**

The GV faculty who lead our classes are experts in their fields, engaged in teaching, research and practice. So students experience the personal satisfaction and creative insights that come from active engagement with both peers and faculty who have experience in multiple organizations, positions and sectors.

Visit us online at [www.grandview.edu](http://www.grandview.edu), then click Graduate Admissions or call 515-263-2830.