

affordability

reduce debt

four-year

graduation

whole degree planning

FINANCIAL

EMPOWERMENT

plan of study

financial literacy

money

management



Grand View University
Spring 2015



PHOTO: JIM HEEMSTRA

Grand View's vision statement says we will preserve the virtues of our type of institution for future generations. We are committed to providing a highly personalized educational experience along with caring support from staff and faculty. To develop the whole person – mind, body, and spirit – we engage students fully in academic pursuits, campus life, and co-curricular activities.

When the Student Center construction concludes this summer, we will have completed a 15-year reinvestment in facilities that will enable us to fulfill this vision. As we've been revitalizing the campus, we've also been building strength in the faculty and staff, academic programs, and co-curricular and student life offerings.

Just as we're completing these investments, however, society has raised concerns over affordability and student debt. Politicians and the press have suggested that institutions like Grand View are no longer accessible to many Americans. Pundits are promoting alternative ways of delivering higher education and different types of experiences that will make a degree (note

I said degree, not an education) more affordable.

Grand View still is affordable for most of the students we have traditionally served. This year, 77 percent of our first-year residential students are paying a net price at Grand View (total charges less scholarships and grants) that is comparable to or less than the published costs of attending one of Iowa's three state universities at their in-state tuition rates.

Yet, while we believe we are affordable, families and students have a hard time seeing it. To be sure, financing a college degree can be daunting, confusing, and difficult. It's nearly impossible for a student to know what a degree might cost, because colleges and universities package it, price it, "sell" it, and make students finance it one year at a time. The time it takes to graduate seems to be getting longer at many institutions. The financial aid process can be overwhelming, particularly for families who are going through it for the first time. It is no wonder that families report a high level of anxiety as they begin the college search process.

table of contents

**GV LAUNCHES
SOCIAL WORK
MAJOR**

4

GV is "in candidacy" for the social work major, having applied for and begun the process of accreditation.

**FINANCIAL
EMPOWERMENT**

10

GV launches new whole-degree planning program, designed to make a degree more affordable.

**NEW
WRESTLING
FACILITY
OPEN**

New space is the largest of all Iowa colleges and also one of the largest in the nation.

So, if Grand View is to remain accessible to future generations of students, regardless of financial means, we need to address our students' concerns over finances. Our answer: a concept that I call "whole-degree planning," a program we've branded Grand View's Financial Empowerment Plan.

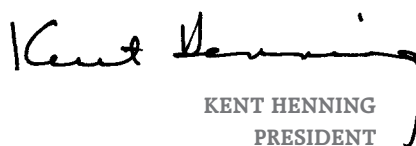
If we are to help students and families understand and be comfortable with the cost of their complete college education, we realized we needed to do three basic things. First, we needed to make the cost of a Grand View degree as predictable as possible. We did this by guaranteeing tuition and fee increases over a student's four years. Combined with that, we are helping students develop four-year plans of study to ensure they'll graduate on time.

Second, we developed a financial planning tool, and coupled it with counseling to help families anticipate all their costs and construct a financial plan to pay for all four years. The tool helps families project total student debt and corresponding monthly student loan payments after graduation. Families can

try different scenarios in order to develop a financing plan that fits their individual situations.

Finally, we need to provide coaching and counseling along the way so students stay on their financial and academic plans. We launched this innovative Financial Empowerment Plan last fall with approximately 130 students in a pilot group. The feature article of this magazine reports on the success of and reactions to this "whole-degree planning" concept.

So, as we complete our campus master plan to provide attractive and functional facilities for future generations, and as we continue to strengthen the programs and people our students will encounter, we now are innovating to help families see how they can indeed afford what we offer. If – after you read more about it – this makes sense to you, please tell others about it.



KENT HENNING
PRESIDENT



SPRING 2015
VOLUME 64, NUMBER 1

Editor LACIE SIBLEY '07
Designer KELLY (DeVRIES '00) DANIEL
Contributing Writers CAROL BAMFORD, DR. CATHY BECK-CROSS, MOLLY BROWN, DR. MARK DALY, DR. ELIZABETH ERICKSON
Photographers TODD BAILEY '92, KELLY (DeVRIES '00) DANIEL, KACY FIGUEROA, MEGHAN GERKE '18, JIM HEEMSTRA, HANNAH LOEHR '15, JAY PROVENZANO '15, DAN VANDER BEEK '90, DOUG WELLS

Board of Trustees

Chair PAUL E. SCHICKLER
W. Kim Austen
Karen (Sorensen '70) Brodie
Michael L. Burk
Eric W. Burmeister
Gregory J. Burrows
Peter M. Cownie
Mary C. Coffin
Eric T. Crowell '77
Robert S. DeWaay
Bao Jake "B.J." Do
Virgil B. Elings '58
Brett E. Harman
Scott M. Harrison
Jason Henderson '93
Nick J. Henderson
Kent L. Henning
Richard W. Hurd '72
Carey G. Jury '70
José M. Laracuenta
Robert L. Mahaffey '58
Anita Norian
James W. Noyce
Gary E. Palmer '72
Kurt E. Rasmussen '88
Dawn Taylor
Martha A. Willits

Honorary Members

Marcia H. Brown
C. Dean Carlson
Garland K. Carver
H. Eugene Cedarholm
Phillip D. Ehm '51
Thomas R. Gibson
Larry D. Hartsook '63
Michael N. Hess
J. Robert Hudson
Theodore M. Hutchison
Richard O. Jacobson
Charles S. Johnson
Timothy J. Krumm
James E. Luhrs
Sandra K. (Jensen '57) Rasmussen
Elton P. Richards
John P. Rigler

GV Magazine is published twice annually by the Marketing Department at Grand View University and is distributed at no charge to alumni and friends of the institution.

Constituents are encouraged to send contributions, suggestions and information for Alumni News to: Lacie Sibley, Editor; Grand View University; 1200 Grandview Avenue; Des Moines, IA 50316-1599 515-263-2832; lsibley@grandview.edu or fill out the form online at www.grandview.edu.

Grand View University
1200 Grandview Avenue
Des Moines, Iowa 50316-1599
515-263-2800
800-444-6083
www.grandview.edu

14

Save the date...
HOMECOMING
2015
September 25-27

STUDENT CENTER CONSTRUCTION UPDATE

BY LACIE SIBLEY '07, EDITOR

If you have been down East 14th Street lately, you have noticed some major changes happening on the east side of our campus. Construction began last spring on the renovation and addition of the new Student Center, set for completion in July.

The Student Center is the hub of student experience beyond the classroom. It houses the Bookstore, Student Life offices (including student government, clubs and organizations), counseling services, multicultural programs, the Career Center, academic advising, the Academic Enrichment Center, and Campus Services. The first floor will also house offices and workspace for the speech and theatre program, the Viking Theatre, classrooms, studios and offices for the Communication Department. There will also be student lounges and recreation areas. The second floor will be devoted to dining services, with a lounge area adjacent to the skywalk, which will connect the Student Center to the

Rasmussen Center across the street.

Construction was slightly behind due to wet fall weather, and steel being at a premium with so much construction in progress throughout the area. However, time is being made up, and the target for opening the building is early August, before students return to campus. The steel is up, and the framing of the building is in progress. Most of the concrete floors have been poured, the outside wall system is in progress, and the structure will be completely enclosed in the next few weeks. Color schemes, tile and carpet have already been chosen, and furniture styles are currently being discussed. The building will have its own distinct look but will have some similarities to the Rasmussen Center décor.

By the end of June construction should be complete. During July, the furniture and dining equipment will be moved in, and the building will be set up for students and currently displaced staff



who have moved their offices to various locations around campus during construction.

Construction on the skywalk, which will connect the east and west sides of campus over East 14th Street, will begin in March with the main steel structure in place by late April or early May. The bridge is expected to be open for pedestrian traffic around the start of the fall semester. Because the bridge is over a federal highway and because some funding is coming from a government grant, the Iowa Department of Transportation has kept a close eye on the project. Upon completion, the bridge is expected to be the longest skywalk in the Des Moines metro area and one of the longest in Iowa. **GV**



GV WELCOMES TWO NEW TRUSTEES

W. Kim Austen is president and chief operating officer of Allied Group, with responsibility for Nationwide's Allied Insurance, Scottsdale Insurance, Harleysville Insurance, Nationwide Agribusiness, and Titan Insurance business units.

Austen began his association with Allied in 1976 as a claims representative. He held various management positions in underwriting and was named regional vice president of



W. Kim Austen

the Rocky Mountain Regional Office in 1990. He moved to the Lincoln Regional Office as regional vice president in 1992 and then to the Des Moines Regional Office in 1994. He was named senior vice president of product development in 2001. In

2003, Austen was appointed senior vice president of Nationwide Commercial/Agribusiness Product & Pricing. In 2006, he was named president of Allied

Insurance and added COO to his role in March 2009.

Austen serves on the Board of Directors of the United Way of Central Iowa and on the Leadership Cabinet of the American Red Cross, Central Iowa Chapter. He's an advisory board member of the Emmett J. Vaughan Institute of Risk Management and Insurance affiliated with the University of Iowa's College of Business. He also serves as a member of the Chair's Circle of the Greater Des Moines Partnership and as a board



STUDENT CENTER BUILT IN 1981

Previous student center: 32,440 sq ft

Remodel: 20,654 sq feet

Addition: 42,055 sq feet

Total sq footage (including theatre): 67,557

Skywalk: 156 ft long

A panoramic view of the first floor; Student Center exterior construction January 29; the second floor dining area will have an excellent view of Grand Central Plaza; President Kent Henning discusses construction with Phil Krusan '16 during a construction tour. **PHOTOS: TODD BAILEY '92 AND KELLY (DeVRIES '00) DANIEL**



Take a video tour of the Student Center construction.

member for the Science Center of Iowa.

A graduate of the University of Nebraska, Austen received a bachelor of science degree in mathematics and economics, and holds the Chartered Property Casualty Underwriter designation.

Jason Henderson began his career in finance with Dean Witter, a predecessor firm to Morgan Stanley, in 1993. He spent the first four years as a financial advisor



Jason Henderson '93

and the next eight years as a regional vice president for variable insurance and investment products with two Fortune 500 companies. In 2004, he returned to Morgan Stanley where he is a vice president and investment management consultant, and is a Rule 144 Specialist, which gives him the ability to work with senior executives and corporate employee stock plans. Henderson specializes in working with Unified Managed

Accounts (UMA's), retirement income planning services and variable annuities. His extensive knowledge in the insurance arena is a valuable asset to their team.

Henderson was born in Des Moines and attended Grand View where he earned a bachelor's degree in business administration in 1993. He, his wife and two children reside in West Des Moines. Outside the office, Henderson is an avid sports fan and runner. **GV**

CREATING INTERNATIONAL PARTNERSHIPS

BY DR. MARK DALY, DIRECTOR OF INTERNATIONAL STUDIES/ELL TUTOR

In December, Dr. Mark Daly, director of international studies/ELL tutor, traveled to China to visit two new partner institutions: Tianfu College in Chengdu and Zhuhai College in Zhuhai.

Tianfu College is interested in creating a 2+2 program with Grand View. Students in the business administration major could spend their first two years in China and their last two at Grand View. Tianfu is also interested in sending their students to GV for intensive short-term non-credit English language preparation.

Zhuhai College, on the South China Sea, is considering a variety of options in conjunction with Grand View. Initially, their school of architecture would collaborate with the GV Department of Art & Design to host special study abroad

programs in both countries. GV students will spend one month at Zhuhai College this summer in a study tour led by James Ewald, assistant professor of art and design, and Matthew Moore, assistant professor of sociology. Zhuhai College plans to hold their own small study tour on the GV campus in January 2016, and organize a special art studio program in the summer of 2016 featuring traditional Chinese art.

These developing relationships will enrich the students involved and help the universities learn about each other's educational systems, as well as break down cultural and political stereotypes. The programs help



Dr. Mark Daly traveled to China in December to work on establishing partnerships with two institutions.

PHOTO: SUBMITTED

further internationalize Grand View and resonate across campus in a myriad of ways to ultimately help raise the GV institutional profile. **GV**

GV LAUNCHES NEW SOCIAL WORK MAJOR

BY DR. CATHY BECK-CROSS, ASSISTANT PROFESSOR OF SOCIAL WORK, SOCIAL WORK PROGRAM DIRECTOR

Professional social workers are in demand. According to the U.S. Bureau of Labor Statistics and Iowa Workforce Development, the need for social workers is on the rise, nationally, across Iowa, and in the Des Moines area. Grand View proactively responded by launching a new program, the Bachelor of Social Work (BSW) degree. At the bachelor level, social workers will have employment opportunities in a variety of settings working with individuals, families, and communities.

Unveiling a new major, especially social work, is a multi-year process that includes review by several bodies of oversight. Accredited social work programs pass through multiple benchmark points and site visits from the Council on Social Work Education (CSWE) and complete a self-study after graduating the first cohort of students.

Currently, GV is "in candidacy" for the social work major, having applied for and begun the process of accreditation with CSWE. The final step toward officially offering the major is approval this spring by the Higher Learning Commission and U.S. Department of Education.

A pilot Introduction to Social Work course is being offered this spring. Student interest was strong, and the class enrolled both current students and those transferring or cross enrolling. The program is designed to be completed in three years after one year of foundational courses, and in two years for transfer students who have completed foundation coursework. The program consists of 12 sequenced classes.

Students may also identify an optional area of concentration, such as public child welfare, substance abuse/mental health, or gerontology. Included

in the curriculum are two field experiences, a 30-hour introductory placement, and a 450-hour advanced placement during the student's final semester. Students receive individualized guidance to ensure each placement supports their personal and professional goals.

In spring 2017, GV anticipates graduating the first cohort of social work majors. Those students may work with children, adults, senior citizens, families, or teens. Settings will range from home-based services to schools, medical settings, mental health or substance abuse centers, correctional institutions, and both public and private agencies.

Regardless of the population and setting, GV social work students will be fully prepared to enjoy a career where the goal is to help improve the lives of individuals, families, and community members. **GV**

LIVING HER PASSION

BY DR. ELIZABETH ERICKSON,
LECTURER OF HUMANITIES

Realizing our passions is a long, reflective journey. University experiences, classes, personal experiences, and jobs all help us think about what we might choose as a career. Will our career also fulfill our passions?

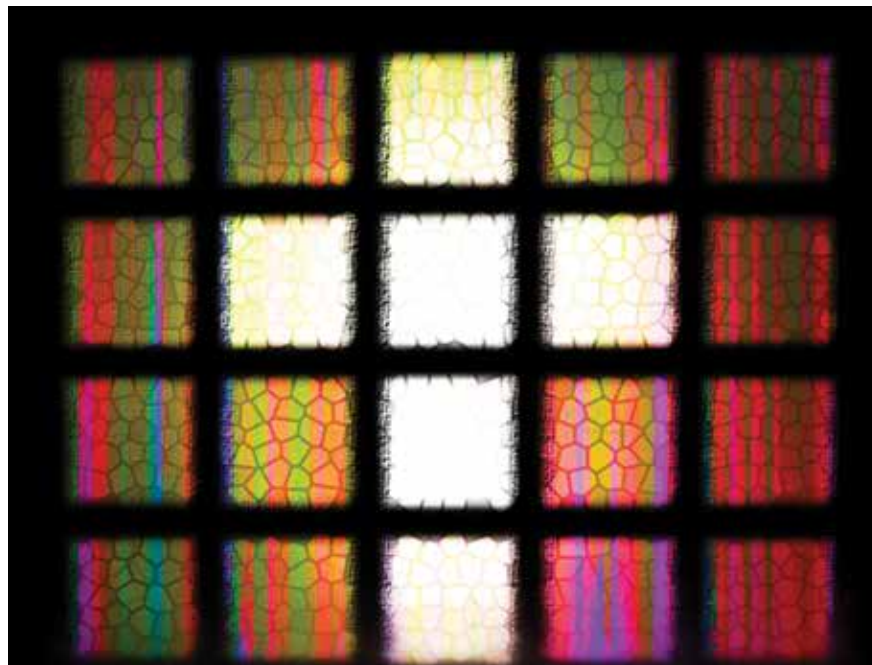
GV students take three thematic core seminars. The first asks the question "Who am I?" The second focuses on who the student is in relation to the world. Core Seminar 3 helps students explore multi-faceted ways to lead a life of ethical service to others. During this seminar, students explore how they are called to connect their gifts, passions and abilities to serving needs in the world.

Sheri Florez, adjunct faculty at Morningside College and Simpson College, has traveled the world living out her passion in her career. She was invited to share her experiences with one of the Core Seminar 3 classes, giving students the opportunity to see first-hand how their core seminar courses can translate to life after college.

Florez taught secondary English, history, and ESL classes for 36 years in the Democratic Republic of the Congo, Turkey, and Kuwait, as well as several locations in the United States. For two years she lived in the Congo without running water, electricity or phones in a bamboo and mud hut. She's traveled to 42 countries.

Much of Florez's presentation centered around teaching in international schools. She discussed differences among the Middle East, Arab countries, and Islamic countries, including the climate and how it affects customs, clothing, and economic needs.

Florez's passion for travel, new experiences, and teaching led her around the world. She said Prague was historic, Krakow intimidating, and Auschwitz/Birkenau humbling. The benefits of her career have been a deeper understanding of the issues and history of the world, a perspective of America from the Middle East. **GV**



SPRING TOUR Grand View Choir

DR. KATHRYN POHLMANN DUFFY, DIRECTOR

March 13-29

- 13 – 7:00 p.m. BETHLEHEM LUTHERAN CHURCH
302 North Oak Street • Inwood, Iowa
- 14 – 7:00 p.m. LUTHERAN MEMORIAL CHURCH
320 East Prospect • Pierre, South Dakota
- 15 – 7:00 p.m. GRACE LUTHERAN CHURCH
1061 Sherman Street • Sturgis, South Dakota
- 16 – 7:00 p.m. BETHEL LUTHERAN CHURCH
328 Walnut Street • Windsor, Colorado
- 17 – 7:30 p.m. CHRIST THE SERVANT LUTHERAN CHURCH
506 West Via Appia Way • Louisville, Colorado
- 18 – 7:00 p.m. KING OF KINGS LUTHERAN CHURCH
2561 Vinewood Lane • Pueblo, Colorado
- 19 – 7:00 p.m. BEAUTIFUL SAVIOR LUTHERAN CHURCH
3500 Bowie Street • Amarillo, Texas
- 20 – 7:30 p.m. ST. JOHN'S EPISCOPAL CHURCH
4200 South Atlanta Place • Tulsa, Oklahoma
- 21 – 7:00 p.m. FIRST LUTHERAN CHURCH
1234 Fairlawn Road • Topeka, Kansas
- 29 – 3:00 p.m. LUTHER MEMORIAL CHURCH
1201 Grandview Avenue • Des Moines

JOIN US FOR A FREE CONCERT!

LESSONS IN POP CULTURE

So, what do The Hunger Games and The Big Bang Theory have in common with John Stuart Mill and Michel Foucault? An award-winning film, a popular television series, a British philosopher and a French philosopher. Answer: Dr. Chad Timm, associate professor of education, and his approach to helping students make connections with their current world while developing a deeper understanding of such philosophers.

“When I was a high school history teacher, I found that the vast majority of my students gained most of their historical knowledge from pop culture,” Timm said. “They would see a movie like Pearl Harbor and assume that what they saw was how it actually happened. Over the years I came to realize that it’s not much different for adults. So, I decided to take responsibility and teach my students to be more literate about media.”

Timm teaches several education classes, as well as a LOGOS honors course. He focuses on teaching students how to analyze the historical accuracy of

films and television shows. Essentially, students learn to mimic the work of historians when they research and analyze history.

When Timm began teaching at Grand View, he discovered that college students gain much of what they know

how to analyze pop culture in order to learn more about how education, history, or philosophy is represented in the media; and second, I use pop culture to help make sense of the complicated concepts and theories they are studying in class,” Timm explains.

“Using pop culture serves two primary purposes: first, I teach students how to analyze pop culture in order to learn more about how education, history, or philosophy is represented in the media; and second, I use pop culture to help make sense of the complicated concepts and theories they are studying in class.”

– Dr. Chad Timm, associate professor of education

about the field of teaching from what they see on TV or in the theater. Instead of debunking what students ‘think’ they know to be accurate, Timm takes what pop culture is depicting and teaches students how to analyze what they see using the theorists or philosophers they learn about in class.

“Using pop culture serves two primary purposes: first, I teach students

In Timm’s Introduction to Education class, they discuss the impact that behaviorism has had on American education. He discusses what B.F. Skinner, in addition to other behaviorists, believe about operant conditioning and whether there is such a thing as free will. The class watches a scene from The Big Bang Theory where the character, Sheldon, tries to use operant conditioning

2013-14 GRADUATE PLACEMENT STATS RELEASED



BY LACIE SIBLEY '07, EDITOR

The class of 2013-14 achieved great success in pursuing their career goals in the job market and/or entering graduate school. The graduates reporting employment, further study, or not seeking employment represented 98% of the graduating class.

Of the 493 graduates participating in the survey, 90% (441) were employed, 3.5% (17) were employed and continuing their education, 3.5% (17) were solely continuing their education, 1% (6) were

not seeking employment, and 2% (12) were still seeking employment.

The employers hiring the greatest number of 2013-14 graduates include: UnityPoint Health, Mercy Medical Center, Wells Fargo, military (all branches), Des Moines Public Schools, Nationwide, county government (varied offices), State of Iowa (varied agencies), Hy-Vee, Waukee Community School District, Broadlawns, and Principal Financial Group. These employers hired a total of

to make another character, Penny, into a better girlfriend. Through watching this scene, students use what they learned about the behaviorism concept to see whether the TV show has represented it accurately. Also, watching the theory in practice helps deepen their understanding because they're applying their learning in another context.

Similarly, in Timm's LOGOS class, he explains what he does when he writes an essay or presents at a conference. He tries to introduce his audience to complex theoretical or philosophical issues by using pop culture as a starting point. Pop culture is a means to an end – the end resulting in students having a deeper understanding of philosophers such as John Stuart Mill, Michel Foucault, or Erving Goffman. Using examples from pop culture has been very effective because those examples are generally part of students' everyday world. Students can take what they learn about the theorist or philosopher and apply it to other pop cultural examples.

"I often have students come to



Dr. Chad Timm, associate professor of education, instructs an Introduction to Education class using pop culture to deepen understanding of philosophical concepts. PHOTO: LACIE SIBLEY '07

class and say, 'I was listening to a song on the radio and thought 'what would Virginia Woolf say about this song?' I've also had a student come to class and say, 'If Batman was more utilitarian like John Stuart Mill, and wanted to increase

happiness and reduce suffering for the most people, then he would just kill the Joker and be done with it. Wouldn't a utilitarian support killing one bad person in order to save many good ones?'" GV

147 graduates from this class.

Other highlights from the annual Career Center survey include:

- 91% of participating graduates remained in Iowa after graduation.
- 9% moved to other states or out of the country.
- 89% report meaningful/satisfactory employment.
- 78% voluntarily reported salary information with an annual average income of approximately

\$35,500.

- 92% secured positions/placements consistent with their first academic major.

For the past 20 years, Grand View's placement rate has been between 98-100%, with the exception of two years during the most recent recession, when it dipped to 95-96%. GV posts annual placement records online. GV



Watch a clip of the Danish gymnasts who visited GV in October.

FACULTY & STAFF ACCOMPLISHMENTS

DR. CATHY BECK-CROSS, assistant professor of social work, was a discussant on Iowa Public Radio's River to River in August where she addressed why the way in which people handle the aftermath of suicides is crucial. She also presented at the fourth annual UnityPoint Behavioral Health Conference on Adolescent Male Suicide: Using Iowa Youth Survey Results to Identify Predictors and Guide Prevention.

DR. SARAH MILLER BOELTS, assistant professor of Spanish, presented a paper entitled Diverse Views of Feminism in Cuban History at the World History Association 2014 Costa Rica Conference in San José.

ED BULL, lecturer of business, was re-elected to a second term as Marion County attorney in Knoxville, Iowa. He was also reappointed as deputy athletic commissioner for the state of Iowa where he regulates MMA and boxing events.

DAN CHIBNALL, user services and instructional design librarian, was elected to the Iowa Library Association's executive board for a three-year term.

BARBARA DOERING, assistant professor of nursing, received her certification for Professional Achievement in Perioperative Nursing Practice; she is clinically certified in the operating room. She is also certified in Maternal Child Nursing.

DR. KATHRYN DUFFY, professor of music, was awarded an alumni citation by Wartburg College; citations are awarded through a nomination and review process based on personal and professional application of the college's mission statement pillars: leadership, service, faith, and learning.

Adjunct lecturers of communication **JUDITH EASTBURN** and **PAULA MAXHEIM** had photos accepted for exhibit in the 2014 Iowa State Fair Photography Salon. Two of Eastburn's entries received Honorable Mention.

DR. BETH GAUL, professor of nursing, and **DR. CAROLYN PAULING**, professor of nursing, brought together students from DMU, Drake, Grand View, DMACC as well as other nursing students across the state to discuss inter-professional collaboration.

DIANE SCHAEFER JOHNSON, director of admissions, joined her husband Bill (retired Grand View photography professor) in retirement in October. She served Grand View for 32 years and has proven unwavering passion and dedication in a variety of roles. She was instrumental in leading the university through a tremendous growth period and has always been a champion for students, parents and her staff.

SHANNON JUERGENS, assistant professor of business administration, and **CYNDI WILEY**, assistant professor of art and design, received professional development awards from The Principal Financial Group. Juergens will use her award to attend the United States Association for Small Business and Entrepreneurship Conference (USASBE) and Wiley will use funding to attend the 2015 South by Southwest Interactive Conference investigating interactive media technology and human computer interaction.

REV. RUSS LACKEY, senior campus pastor, wrote an article that was featured

MLK WEEK OF SERVICE

The campus community participated in GV's first week-long MLK Week of Service. From left: cutting jeans to make shoes for children in Uganda; packaging Meals from the Heartland; making tie blankets for Blank Children's Hospital; stuffing folders for families in need with Des Moines Area Action Agency; making valentines for residents at Luther Park.

PHOTOS: LACIE SIBLEY '07 AND ALEX PIEDRAS '02



NEW DIRECTOR OF ADMISSIONS

Ryan Thompson began as director of admissions in October. He is a Des Moines native and has worked in college admissions for more than 13 years. He worked at Drake University since 2003, most recently as the senior assistant director of admissions. Thompson is passionate about higher education and helping students and families navigate the college search process. He also has family connections to GV; his son is currently a sophomore and his mom and sister are GV alumni. Thompson received his bachelor's degree from Iowa State University. He enjoys playing sports, fly fishing and spending time with family. **GV**



Ryan Thompson

in the November issue of the Lutheran Magazine.

MELISSA LARSEN, assistant professor of nursing, passed the psychiatric nurse practitioner boards.

DR. JOHN LYDEN, professor of liberal arts, attended the American Academy of Religion meeting in San Diego. He presented on the scholarly contributions of the Journal of Religion & Film, of which he is the editor. He was also interviewed by the Huffington Post for a podcast about the movie, Left Behind.

DR. MARK MATTES, professor of theology and philosophy, had an essay translated into German and published as a chapter in the volume, Glaube und Vernunft: Wie vernünftig ist die Vernunft?

(Faith and Reason: How Rational is Reason?)

PAM REES, director of the library and information resources, is serving as chair elect of the Iowa Private Academic Libraries Association. She presented at the Charleston Conference in South Carolina in November.

DR. ROBIN TRIMBLE WHITE, professor of education, retired the end of the 2014 fall semester and is residing in West Virginia.

STEVE WINZENBURG, professor of communication, had his Jimmy Fallon study and TV talk show research featured by the Huffington Post, Hollywood Reporter, and Salon. He was also interviewed for a French magazine. **GV**

STUDENT SUCCESS

Three students received Honorable Mention in the 2014 Iowa State Fair Photography Salon: **STACY KEELY '14** in the Things and Still Life class; **THERESA MACDONALD '15** in the Plant, Flowers and Trees category; **KRISTER STRANDSKOV '16** in the My Ansel Adams category. **MACDONALD** also had an image selected for exhibit in the People category.

GV NSA received two awards: Legislative and Education (**KARI TICER '15**) for the NSA annual legislative forum last February and Newsletter (**PRUDENCE MPOFU '15**) for outstanding work. **DERICK MBACHAM '17** received the Student to Student IANS scholarship.

Four pre-licensure nursing students were elected to the IANS board: **GORDON HEAD '15** as Council of School Presidents director, **JANA SCHURING '15** as Breakthrough to Nursing director, **KELLEY JOHNSON '15** as Legislative and Education director, and **RYAN WINDER '15** as Vice President. **TRACY THOMPSON '17** was re-elected as President.

JESS SHORT '16 was selected to be a part of the Iowa Campus Compact (IACC) Civic Ambassadors Network – an opportunity for college students to lead social change on their campuses and in their communities. The Civic Ambassador Network serves as a resource for creating, educating, and promoting civic engagement in Iowa and motivating and inspiring civic and social responsibility through peer engagement and collaboration. **GV**



“[I have] the impression that GV understands the financial challenges of a college education for students and families, and they had the insight to create a program to help us meet those challenges.”

FINA EMPO

BY CAROL BAMFORD, VICE PRESIDENT FOR MARKETING

Nearly 130 incoming freshmen – and their families – took a plunge last fall when they volunteered to be part of a pilot of Grand View’s new Financial Empowerment Plan (FEP), an innovative “whole degree planning” program that is designed to make a Grand View degree more affordable and predictable, as well as reduce student debt, encourage four-year graduation, and improve financial literacy. These students and their families have begun to plan for – and finance – the entire college degree, rather than a year or semester at a time.

Their journey began with intensive individual meetings this past spring with a financial empowerment coach, during which they developed a comprehensive four-year financing plan that will guide them throughout the four years of a bachelor’s degree. After completing the fall semester, the students’ first major milestone on their journey was to register for spring classes, plan in hand, which 97% of them did. And the parents’ first milestone was to provide feedback through a survey, feedback that will guide us as we refine the program. One parent captured well the thoughts of many: “It really helped us all understand the costs related to tuition, room/board, and other expenses related to college. It is overwhelming for parents, especially with a first child attending college. It eased our anxiety and made the whole process seem manageable. I only wish my older son’s school would have had something like this.”

So how did Grand View come to be an innovator in how students plan for and finance an entire degree, breaking a mold that has existed for decades? We listened and then thought hard about what we heard.

There is much media attention today on what

FINANCIAL EMPOWERMENT

is often referred to as the “student debt crisis.” We all hear about graduates with debt so crushing that it prevents them from buying homes and starting families. Right behind those headlines is an emphasis on “skyrocketing” college costs, the complexity of financing, the increasing time to graduation, and the stagnation of the middle-class family incomes that pay for college.

So what are colleges and universities doing in response to these perceived “crises?” Some have announced that they are freezing or even reducing tuition. Those announcements make headlines, but there is little information about how most of these institutions offset reductions in their revenue by reducing the financial aid they give students or by increasing fees. In the end, students at these institutions will pay about the same amount in net tuition as they would have without the freeze or reduction. Most of these institutions are not freezing or reducing the cost of room and board, yet student living expenses account for a large share of a student’s cost – and borrowing.

Moreover, many people think private, not-for-profit universities are no longer affordable. Yet, we have demonstrated that for most families, after financial aid is considered, Grand View is as affordable as publicly-funded universities. In fact, after grants and scholarships, seventy-seven percent of 2014 full-time, residential GV freshmen paid tuition, fees, and room and board that were comparable to or less than the published in-state prices at Iowa’s public universities. But families don’t recognize that affordability up front because of the complexity of financial aid, including student loans.

Another important factor in the genesis of the Financial Empowerment Plan was time to graduation. The longer it takes a student to complete a degree,

the higher the cost. Analyses of student costs and borrowing at Grand View indicate that on average students entering as first-time full-time freshmen in 2007 incurred \$19,135 of additional charges beyond the fourth year of study and took out \$8,377 in student loans to finance that additional coursework. The reasons students attend beyond four years are as individual as the students. Some stay for reasons of athletic eligibility, others to pick up a second major, minor or certificate, and still others because they hold necessary jobs that slow their educational progress. But that additional time has a cost.

At virtually all institutions, higher education is “sold” one year – or even one semester or credit – at a time, encouraging a short-term, expendable view of education, which in turn makes students less likely to finish. But most students and families want a degree.

We knew we could do better.

The FEP philosophy

Prior to beginning the freshman year, students – with their families – develop comprehensive four-year financing plans that include predictable monthly payments while the student is in school and anticipated student-loan borrowing levels that are tied to the student’s earning potential in his/her intended field of study. The plan also includes a budget for student living expenses that takes into account a family’s resources and a student’s in-school/summer earnings. With more predictable expenses, students can potentially borrow less. And with this plan, students have accurate estimates of student loan payments after graduation.

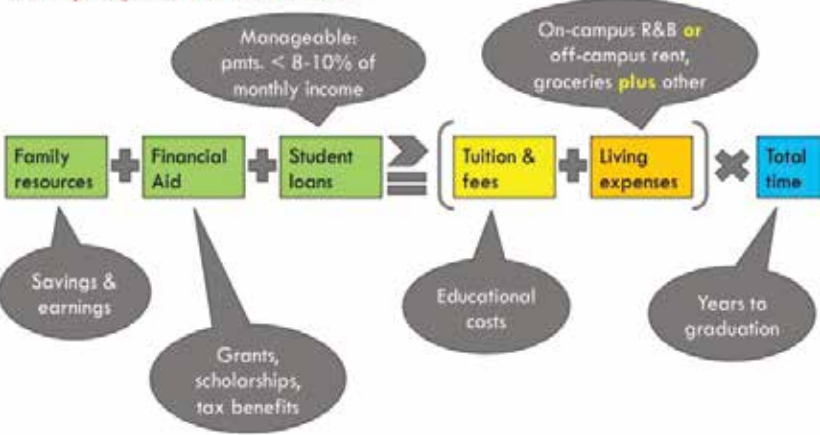
The Financial Empowerment Plan makes the planning and financing of a student’s entire degree transparent and encourages four-year graduation,



President Kent Henning discusses GV’s Financial Empowerment Plan.

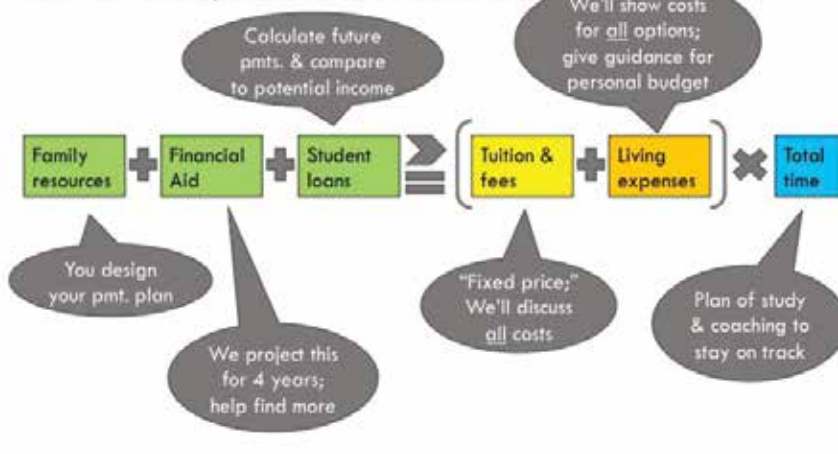
Affordability: A "model"

A college degree is affordable when...

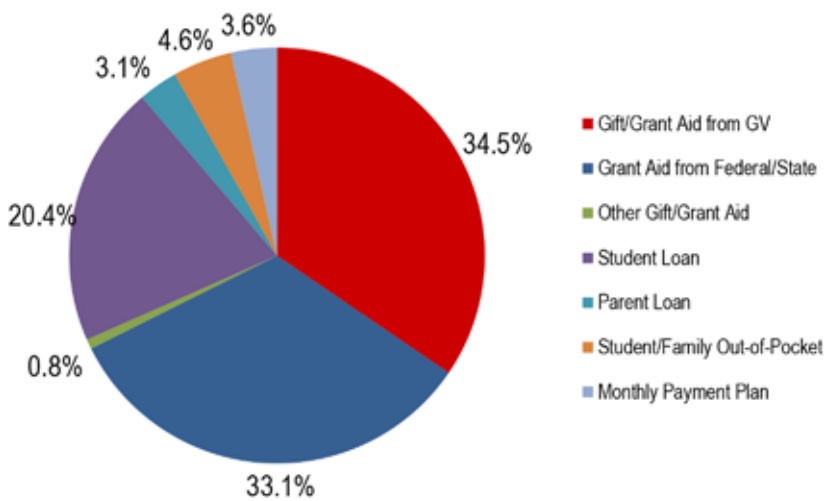


Our FEP puts you in charge

You'll see the whole picture; consider various scenarios...



How will the cost of my degree be covered?



The chart above shows families how the student's education is financed by source.

a significant step in reducing loan debt. It has these components:

- A 2% cap on annual increases in tuition and on-campus room and board rates.
- A set of tools to lay out a four-year financing plan that makes the most of all the options open to a student and minimizes borrowing. Students who complete the financing plan will have an estimate of monthly student loan payments after graduation that is compared to salaries in their chosen career. The financing plan is followed by a comprehensive plan of study that is designed for four-year graduation.
- Ongoing financial counseling and coaching to help students with their finances while they're in school so that they stay on their plans.

The Financial Empowerment Plan and all of its attendant tools was under development for nearly two years. And in the fall of 2014, Grand View began a pilot of the concept.

The FEP pilot

One hundred twenty-nine students (and their families), all incoming freshmen in the fall of 2014, volunteered to be part of the FEP pilot program. Each family started the program with an individual meeting with our financial empowerment coach or another trained staff member. At those meetings, each family used a financial tool developed here at GV to lay out a detailed, comprehensive, personal plan to finance the student's entire degree. The outputs of that plan show estimates for:

- Out-of-pocket payments for each of four years
- Monthly payments while the student is enrolled
- Monthly student loan payments after graduation for 120 months loan duration
- If applicable, parent loan payments while the student is enrolled and after graduation (72-120 month term)
- Amount saved by participating in FEP

Families can also see a chart of how the student's education financing breaks down by source (see sample chart at left).

The FEP coaches, students and families worked hard at the detail that went into the plans. First, all costs the student might incur were input – tuition and fees, room and board, other expenses such as the cost of studying abroad if a student has an eye on that program. Then all gift aid was captured – federal and state grants, GV scholarships, outside scholarships,

and any other sources of aid. A subtotal gave the coaches an amount that must be covered out of the family's own resources, by student earnings, by loans, or through other sources.

It was at this point that students and families began to truly understand the impact their own contributions and decisions have on the necessity to borrow. Some families thought carefully about what their own resources are and how much more they might be able to contribute; students began to see that working in the summer and contributing those earnings to their education can, in fact, minimize the amount they borrow. And this phase of the planning was an eye-opener for some students who may have assumed that an additional year of athletic eligibility – or a second major – was in their plans; they could see how much that additional year or semester is likely to cost, and how much it might increase their need to borrow. Our financial empowerment coaches didn't steer students and families toward particular decisions, but rather tried to create understanding and lay out facts and scenarios that allowed for informed decisions.

Families had a clear picture of the amount they would need to borrow, which could then be allocated among federal subsidized and unsubsidized loans as well as parent loans (federal or private). What remained was shown in the plan as out-of-pocket expenses. The planning tool also detailed how families could handle those out-of-pocket expenses with a payment plan. For students, one of the most important outcomes of the plan was an estimate of monthly student loan debt after graduation, which was then compared to expected monthly earnings in the student's chosen career (another eye-opener for some). After seeing an initial draft, some families made modifications in their Financial Empowerment Plan, using the tool's ability to do "what-if" analysis.

Once a family's plan was complete, the student and family signed an agreement that obligates the student to fulfill his/her commitments, which are critical to the success of the student's plan. Among those commitments is developing a plan of study that leads to graduation in four years. Through the course of a student's years at Grand View, both plans may be modified to reflect a student's – or a family's – changing circumstances.

All students in the FEP pilot have an assigned empowerment coach whose role is to support the


student in fulfilling his/her plan, reviewing it at least annually, modifying it if necessary, and developing the four-year plan of study no later than the sophomore year. The empowerment coaches also assist FEP students with personal budgeting and money management so that their expenses while on campus stay at a reasonable level ... and so that students master money management skills.

Reactions and early success

One of the purposes of a pilot is to learn what works well and what needs to be modified. Student focus groups and meetings with empowerment coaches, as well as parent surveys and follow-up phone calls, are already guiding us as we refine the program.

Beth Carlson, whole degree planning director, sees significant early success: "FEP participant parents who responded to a survey were uniformly positive about the program. Ninety-four percent of them said they had a very favorable or favorable impression of Grand View because of the FEP. They also made many great suggestions. We've already made a number of changes in the payment plan process from their feedback, and we've seen a big difference in the retention rate from fall to spring semester. Students in the FEP pilot returned at a 97% rate, which is 4% higher than the highest overall freshmen fall to spring retention rate since 1992! We've also accelerated initial meetings between students and the empowerment coaches because of what we learned in the student focus groups."

The FEP promotes a partnership among the students, their parents, and the university at a time when students are overwhelmed by all their activities and life changes. By the time the students had been on campus for a couple months, it became clear to them that they can't continue to let their parents "take care of it," as many of them said in the focus group. In addition to all of its other benefits, the FEP may accelerate the movement toward independence that is so crucial for young adults. One parent commented: "[The program] helps the student[s] see the big picture over their full four years, makes them realize the commitment and the responsibility they are taking on."

The Financial Empowerment Plan will be the standard for all incoming freshmen in the fall of 2015, thanks to the participation of the those in the pilot. 

"Taking the time to ensure the students understood their responsibilities and the costs is hugely beneficial. This also helps to develop further conversation at home on how their education will be paid and what contributions they will need to make."

– FEP Pilot Parent

NEW WRESTLING FACILITY OPEN

BY LACIE SIBLEY '07, EDITOR

Grand View purchased the former AMF bowling alley property last spring with the purpose of supporting the ever-growing athletic needs of the campus. Much of the building and the facilities inside were in tact, which made the property that much more appealing. Renovation is still going on for part of the building; however, the portion reserved for wrestling facilities opened to athletes last fall.

The old wrestling space located in the Johnson Wellness Center is 3,000 square feet. The new facility bumped up the square footage nearly five times to 15,000, with new wrestling mats taking up approximately 8,100 square feet. The wrestling team can now train and practice together at the same time rather than splitting the practice, as they had done before. The wrestlers can drill properly and focus on their skill as a team.

A safety floor was installed, as well as a state-of-the-art video system for each mat. The locker room contains 64 full lockers and 16 showers. The training room is connected

to the wrestling room, which allows injured athletes to do rehabilitation while still being part of practice. GV now has one of the best facilities in the nation, regardless of division. The wrestling room is the largest of all Iowa colleges by more than 600 square feet and also one of the largest in the nation.

The team is grateful for their new spacious digs. They have trained in the old facility and realize how lucky they are to have a facility of this caliber.

"Our new facility is awesome, but the important thing to remember is that doesn't automatically make us better as a team. We still have to put the work in," Head Wrestling Coach Nick Mitchell, said. "It gives us some ability to do things we couldn't in

the past and that is great, but we won titles in a really small room, too. Our athletes need to continue to live the championship lifestyle. If they set a goal to be great at everything they do, we can keep competing for national titles every year." **GV**

The locker room houses 64 lockers and 16 showers; the training room is connected to the practice space; the wrestling room, at more than 600 square feet, is the largest collegiate practice space in the state of Iowa.

PHOTOS: KELLY (DEVRIES '00) DANIEL AND LACIE SIBLEY '07



MEN'S VOLLEYBALL COMPETES IN PUERTO RICO

BY MOLLY BROWN, DIRECTOR OF ATHLETIC MEDIA AND GAME OPERATIONS

In November, the nationally ranked men's volleyball team traveled to Puerto Rico – home to five current players. This trip, which had been in the planning stages for three years, finally came to fruition and allowed those players to compete for their families in person for the first time in their collegiate careers. It also provided the coaching staff the opportunity to recruit more student-athletes.

"Recruiting in Puerto Rico is important to our program. Getting to meet recruits and having the recruits meet our players in person was a great thing," said Donan Cruz, head men's volleyball coach.

The team has already signed two players from Puerto Rico to the 2015-16 roster, including the stepbrother of senior Victor Gonzalez, a four-year starter for the Vikings.

In addition to the exhibition matches against

the University of Turado and Caribbean University, the team got to sightsee for a day and take in many cultural experiences on the island.

According to Cruz, one of the most memorable moments of the trip was when the team was addressed by the mayor of Arroyo, home of Turado University, and presented a certificate of appreciation given to special visitors to the city. **Gv**

From left: Vikings compete in Puerto Rico for the first time; the team had the opportunity to sightsee while in Puerto Rico. PHOTO: SUBMITTED



GV HOSTS FUNDRAISER WITH OLYMPIAN TO BENEFIT KIDS

BY MOLLY BROWN, DIRECTOR OF ATHLETIC MEDIA AND GAME OPERATIONS

Courage League Sports is a local adaptive sports facility specifically designed for children unable to go full speed due to disability, illness, or emotional challenges. GV was selected to host a high-profile fundraising event November 9, which benefited Courage League Sports.

GV was chosen as one of four host sites across the nation for the event that featured one of the most decorated players in women's soccer history, Abby Wambach. Wambach is the world's most prolific international goal scorer for

the United States Women's National Team and a two-time Olympic gold medalist. The GV women's soccer team assisted with the event.

"It was a privilege to have the opportunity to host an event with one of the top women's soccer players in the world and raise funds and awareness for a local charity," said Ventsi Stoimirov, head women's soccer coach. **Gv**



Two-time Olympic gold medalist Abby Wambach practices with young soccer players during the fundraiser. PHOTO: SUBMITTED



SPORTS SHORTS

Basketball: Men

- Kerry Green MCC Player of the Week.

Basketball: Women

- Taylor Nashert, Maddie Westergard MCC Players of the Week.

Bowling: Women

- Won Leatherneck Classic, Midwest Collegiate Championships.
- Brittany Smith named to All-Tournament Team at Sandhills Classic and Midwest Collegiate Championships.

Competitive Dance

- Champions in Pom, runner-up in Hip-Hop, third in Jazz at ISDTA State Competition.

Cross Country: Men

- Kennedy Kiprof MCC Athlete of the Week.
- Kiprof ninth at conference meet; earned MCC Honorable Mention.

Cross Country: Women

- Jasmine Nielsen fifth at MCC Championships; qualified for nationals; earned MCC First Team. Kelsey Carbajo 11th at conference meet; MCC Honorable Mention.
- Carbajo MCC Athlete of Week (twice).

Football

- Ranked in NAIA Top 10 every week.

- Defeated NCAA Div I Drake for second-straight year.
- 5-0 in conference play; won third MSFA Midwest title.
- 10-2 overall in 2014.
- Made program's third national playoff appearance; advanced to quarterfinal round.
- Derek Fulton (twice), Alex Bartlett, Josh Calmer, Charles Badgett, Dashawn Cason, MSFA Midwest Players of the Week.
- Calmer NAIA National Defensive Player of the Week.
- Sixteen named MSFA Midwest All-Conference – First Team: Fulton, Cason, Brady Roland, Tyler Ahrens, Junior Onuma, Kelvin Gilkey, Lance Lewis, Jaleil Davis, Adam Wenck, Kenny Jones, Tobias Tyler; Second Team: Badgett, Keonte White; Honorable Mention: Bartlett, Nick Bush, Davion Hurst.
- Fulton MSFA Midwest Offensive Player of the Year.
- Mike Woodley MSFA Midwest Coach of the Year.
- Fulton and Roland Named NAIA All-Americans.

Golf: Men

- Won Whistling Straits, NAIA Invitational, Viking Classic, Deer Park Classic.

- Ben Wollam, Tyler Christians (three times), Myles Pflingsten MCC Players of the Week.

Golf: Women

- Won Deer Park Classic; runner-up at Midwest Collegiate Invitational.
- Maria Mantilla MCC Player of the Week (twice).

Soccer: Men

- Ranked in NAIA Top 10 every week.
- Won MCC regular season title with 5-0 record.
- 18-3-1 overall season record.
- Won MCC Tournament to qualify for tenth national tournament.
- Advanced to quarterfinals of NAIA Championships.
- Ross Alexander, Bruno Henrique, Raphael Nasscimento, Brian Lee, Paul Riesthuis, Sebastian Santos, Aaron Scott, named to MCC First Team. Sam Blackman voted to MCC Honorable Mention Team.
- Alexander MCC Player of the Year; Henrique MCC Newcomer of the Year; Blair Reid MCC Coach of the Year.
- Alexander (Second Team) and Scott (Honorable Mention Team) named NAIA All-Americans.
- Alexander voted to NAIA Championship All-Tournament team.

From left: Pedro Cardoso, Makenzie Drake, Maddie Westergard, Kennedy Kiprop, Kerry Green, Derek Fulton, Ryak Finch.
PHOTOS: MEGHAN GERKE '18 AND DOUG WELLS



- Riesthuis (twice), Alexander (three times), Nascimento, Henrique, Scott, Lee (twice), Santos, Jordan Burns, MCC Players of the Week.

Soccer: Women

- Received votes in national rankings.
- Nicole Pirie, Kayla Pitman voted to MCC First Team; Paige Flores to Honorable Mention Team.
- Pirie named CoSIDA Academic All-District and All-American.
- Pirie and Jeri Nagle named NSCAA Academic All-Region.
- Team earned NSCAA Academic Team Award.
- Pirie MCC Player of the Week.

Tennis

- Women 3-1; men 2-1 in fall dual play.

Indoor Track & Field: Men

- Keonte White MCC Track Athlete of the Week; Nate Johnston MCC Field Athlete of the Week.
- Johnston qualified for nationals in weight throw.

Indoor Track & Field: Women

- Jena Krebs, Val Veiock MCC Field Athletes of the Week.
- Krebs (weight throw), Veiock (shot put, weight throw) qualified for nationals.

Volleyball: Men

- Earned first #1 ranking in the NAIA in January.
- Felipe Rosa NAIA Setter of the Week.

Volleyball: Women

- Ranked in NAIA Top 25 every week.
- Runner-up in MCC regular season and tournament.
- Qualified for NAIA Championships.
- Courtney Bliss, Chrissy Daggett, Kelley Johnson, Erin Roggenburg, Taylor Wells named to MCC First Team; Brie Winegar named to MCC Honorable Mention Team.
- Wells AVCA First Team All-Region; Johnson AVCA All-Region Honorable Mention.
- Wells voted to NAIA All-America Honorable Mention team.
- Daggett (twice), Bliss (twice), Johnson, Wells (twice), Winegar, MCC Athletes of the Week.
- Career milestones: Bliss (1,000 digs), Daggett (2,500 assists), Johnson (1,000 kills), Abby Graves (1,000 kills), Kelly Nakandakari (1,000 digs).

Wrestling

- Ranked No. 1 in NAIA for more than 20-straight polls; maximum number (12) of athletes nationally-ranked.
- Won fourth straight Cliff Keen National Duals title. **GV**

30 ATHLETES NAMED NAIA SCHOLAR-ATHLETES

The National Association of Intercollegiate Athletics (NAIA) announced its 2014 Fall Daktronics-NAIA Scholar-Athletes. Student-athletes are nominated by their institution's head coach and must maintain a minimum grade point average of 3.5 on a 4.0 scale and achieve junior academic status in order to qualify for the honor.

WOMEN'S CROSS COUNTRY: Kelsey Carbajo, Kalli McCann

FOOTBALL: Alex Amadeo, Dallas Franks, Derek Fulton, Jacob Hosking, Ben Hurley, Kyle Stillmunkes, Jordan Augustine, Evan Johnson, Dylan Leighter, Junior Onuma, Adam Wenck, Keonte White

MEN'S SOCCER: Ross Alexander, Ross Galbraith, Aaron Scott, Andrew McLeavy, Paul Riesthuis

WOMEN'S SOCCER: Elle Lacher, Madison Vestal, Katelyn Worpel, Jeri Nagle, Nicole Pirie

WOMEN'S VOLLEYBALL: Courtney Bliss, Kelley Johnson, Mollie Kenne, Erin Roggenburg, Kadie Subbert, Brie Winegar **GV**

2 MINUTE SURVEY

We are interested in your thoughts and opinions. Please help us serve you better by completing and returning this short survey. Thank you!

I am interested in...

- How Grand View alumni are making a difference
- What's new on campus
- Viking athletics
- Special events for GV alumni
- I am not interested in Grand View news and events

I would rate the frequency of communication I receive from Grand View as:

- Too much Just right Not enough I don't receive anything from Grand View

I feel that the information in the following items are useful and interesting to me.

	Interesting	Not interesting	Don't know/don't use
GV Magazine	<input type="checkbox"/>	<input type="checkbox"/>	<input type="checkbox"/>
GV alumni electronic newsletter	<input type="checkbox"/>	<input type="checkbox"/>	<input type="checkbox"/>
GV email communication	<input type="checkbox"/>	<input type="checkbox"/>	<input type="checkbox"/>
www.grandview.edu	<input type="checkbox"/>	<input type="checkbox"/>	<input type="checkbox"/>
Grand View social media (Facebook, Twitter, YouTube)	<input type="checkbox"/>	<input type="checkbox"/>	<input type="checkbox"/>

My preferred methods of communication are:

- Phone. My number is: _____
- Email/eNewsletter. My email address is: _____
- Mail. My address is written below.

We all have a unique connection to Grand View, and we would love to hear your Grand View story. Whether you have fond memories of late nights at the library or want to tell your favorite story about the rock, we want to hear it! Share your story below or email it to lsibley@grandview.edu. Your stories may be included in future GV promotional materials.

Name _____

Phone _____ Email _____

Address _____

City _____ State _____ ZIP _____

Return your survey to: Grand View Magazine; 1200 Grandview Avenue; Des Moines, Iowa 50316

An online survey is available at: www.grandview.edu > Alumni

We respect your privacy! Information collected here will be kept strictly confidential. It will not be sold, rented, loaned or otherwise disclosed, and it will not be used in ways to which you have not consented.

HOMECOMING '14



Despite the cool weather, GV alumni, students, parents and friends gathered to celebrate Homecoming 2014, October 3 – 5.

The celebration kicked off Friday with breakfast and an Alumni College session discussing Cuba, Then and Now. The presentation was led by Coralie Turner, assistant professor of modern language, Amy Schumann, lecturer of Spanish, and Dr. Sarah Miller Boelts, assistant professor of Spanish. That afternoon alumni enjoyed a campus tour, including a walk-through of Student Center construction, lunch with President Kent Henning, a few classes (without quizzes), a reunion and song fest. The annual President's Club Dinner was hosted at Prairie Meadows Friday evening where the class of 1964 was recognized. Patrick Hoberg '09, Marla (Van Donselaar '88) De Jong, and Ethel (Kjaer '54) Barker received alumni awards, and Derek Bills '01 was inducted into the GV Athletic Hall of Fame.



Saturday morning began with aebleskiver and the Viking 5K. More than 100 runners and walkers braved the cold to participate in the annual event. Justin Bond '13 took home the overall prize for the race. Additional activities included the baseball and women's volleyball alumni games, and a very large tailgating crowd at Williams Stadium before the homecoming football game against St. Xavier – GV won 41-37!



The GV choir and instrumental duo performed during the worship service at Luther Memorial Church Sunday morning. Following the service, guests enjoyed a complimentary brunch in the fellowship hall of the church. To round out the weekend, softball alumni participated in the second annual softball game. **GV**



Clockwise from top: Runners brave the cold for the Viking 5k; fans cheer on the Vikings at the Homecoming football game; alumni at the Alumni College session; future Vikings participating in the Kid Trot; men's alumni basketball game; alumni softball game participants; alumni baseball game; alumni at the President's Club Dinner hosted at Prairie Meadows.

Photos by: Kacy Figueroa, Hannah Loehr '15 and Jay Provenzano '15.

Save the date...

HOMECOMING '15

September 25-27

★★★
GRAND VIEW NATIONAL
ALUMNI
COUNCIL

There were some wonderful times in the good old days. When those days were depends on when each of us walked across the stage to receive the diploma we worked so hard to earn. Whenever those good old days were, you may be certain that these are the great days for Grand View!

As we watch the new Student Center take shape and transform our campus, we need to be reminded that the more things change, the more they stay the same. The physical appearance and infrastructure of GV has changed, but the passion, commitment and deep relationships that are forged here remain the same. Countless alumni refer to a feeling of family, a feeling that GV will always be home no matter how far they traveled to attend here, or how far they moved once they graduated. Grand View boasts great students, committed faculty and staff, dynamic academic programs, wonderful facilities, increased enrollment, successful athletic programs, exciting campus events, and our loyal and lively alumni.

I encourage you to come back, cheer for the Vikings at an athletic event, enjoy a fine arts performance, audit a college course, appreciate a photo or art exhibit, attend an alumni event – and of course, make it a priority to attend Homecoming in September 2015. Come home and visit your Viking family. When you do, you will experience why this is a great time to be a Viking!

Brian Patterson '95
Associate Vice President for
Advancement & Alumni Relations

Thirteen Bay area alumni and spouses gathered for their annual reunion in Carmel, Calif. The group has been hosting reunions at various locations in northern California since the 1970s. Front row: Bob Nilsen '50, Ivan Kerr '59, Lars Sorensen '55, Egon Ellgaard '54 and Roger Weisman. Back row: Carol Ann Sorensen '59, Janet Thuesen '57, Sheryl Kerr, Ray Bille, Kay Bille '51, Shirley Ellgaard, Karma Nilsen '51 and Trudy Weisman '59.



1956

SALLY (JENSEN '56) BLOUNT is proud of her granddaughter, Hailey, of Muskego, Wisc., who was named Conference Player of the Year in softball.

1964

JOE ROBINSON '64 was promoted to associate state director for the Oklahoma Department of Career and Technology Education. He and his wife, Judy, reside in Stillwater, Okla.

1966

KENT M. STEVENS '66 is a retired Master Sergeant at Iowa Air National Guard and retired trooper pilot for the Iowa State Patrol. He is a part-time shuttle driver at Lithia Volkswagen.

1967

GEORGE YOUNG '67 retired in 2012 after working as a mental health therapist for 15 years, a high school teacher for four years, and spending 24 years in the U.S. Army.

IOWA DISTILLING COMPANY TOUR, TASTING, COCKTAILS

Join fellow alumni Thursday, March 12, at 6:00 p.m. for a unique night of fun at the Iowa Distilling Company. Be one of the first 20 people to register for the event and enjoy an evening that includes a tour of the distillery, a tasting of the products made by the Iowa Distilling Company, and plenty of opportunities to create your very own cocktails.

Bring a donation to help fund the GV National Alumni Council Scholarship and enjoy cocktails, snacks, and fun with other GV alumni.

Register online at www.grandview.edu > Alumni or contact Katie Royer, director of alumni relations, at kroyer@grandview.edu or 515-263-2957.



1968

NICK KNEZEVICH, JR. '68 resides in Oklahoma with wife, Faira. His business, Jet Warbird Electronics Repair, has gone worldwide.

1970

MIKE BRODIE '70 received the National Association of Realtors (NAR) 2014 Distinguished Service Award, an honor presented to no more than two of NAR's one million members annually.

1977

SCOTT ROGERS '77 and his wife, Sandy, own Rist & Associates in Des Moines, Iowa. They are the proud grandparents of two granddaughters and expect another grandchild in April.

1986

SUSAN (MERRILL '86) CASBER retired in June from Des Moines Public Schools as a school nurse.

EDWARD B. WRIGHT '86 was a candidate for the U.S. House of Representatives, Iowa third district, Libertarian Party.

1987

MICHELLE WIMMER SANDERS '87 is a merchandiser at Lawrence Merchandising.

1990

MICHELLE DECLERCK '90, president of Conference Event Management (CEM), is the founder of Mentor Tank, a monthly gathering for young women to connect with professional women to learn about hot topics affecting women in today's workforce.

1994

AMY GIBBS '94 works second shift in grocery inventory control for the Hy-Vee Distribution Center in Chariton, Iowa.

1995

BENJAMIN STONE '95/'03 is the program coordinator for CNA education at Signature Healthcare.

1996

NATE SICKERSON '96 has been competing on a high level in Masters Track & Field. He has competed against,

and defeated, former Olympic medalists. He is a 15-time USATF National Champion for his age group and is currently ranked number one in the world for 55- and 60-meter dash.

1998

GRETA DEGEN '98 is an associate professor of nursing and was promoted to associate chair of the MSN and RN to MSN programs at Concordia University, Texas.

2002

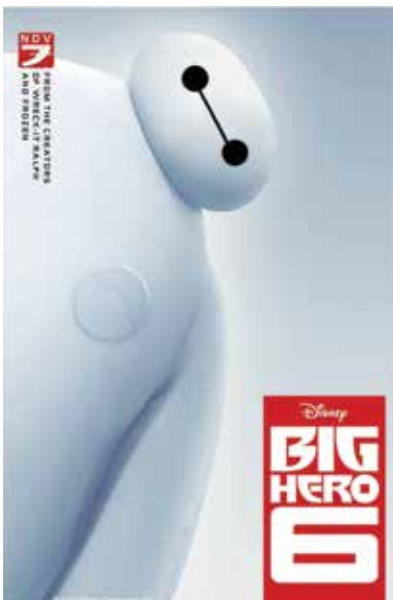
JULIE MUEGGENBERG '02 married Carlton Burger March 29. The couple resides in West Des Moines, Iowa.

2004

RACHEL GRAHAM '04 successfully defended her Ph.D. dissertation and has been an assistant professor at the University of Alaska since fall 2013.

JILL NOWADZKY '04 married Chad Montegna October 18.

>>



MOVIE ON THE LAWN

FRIDAY, JUNE 19 • 8:30 P.M.

"Big Hero 6" is coming to Grand View! Bring your family and friends and enjoy a FREE movie on the lawn beginning at 8:30 p.m. The movie will be played on the grassy area just west of the Rasmussen Center, along Grand Central Plaza. Bring chairs, blankets, and snacks and enjoy the movie. Popcorn will be provided!

In case of inclement weather,
the movie will be shown in the Viking Theatre, Student Center.

FREE

2007

CHRIS HILL '07 was named Ames Tribune Coach of the Year.

2009

MOLLY HOTTLE '09 and Nigel Duara were married August 2 in Portland, Ore. Hottle is a marketing copywriter and editor for Providence Health & Services in Portland and Nigel is a national correspondent for The Los Angeles Times.



ANNIE WILLIAMS '09 married Andrew Hockins January 18, 2014.

2010

JAYME AMMANN '10 married Joseph Larson May 31 at Capitol Hill Lutheran Church. She is a nurse in the



neonatal intensive care unit at Mercy Medical Center in Des Moines. Joseph is a family medicine resident at Iowa Lutheran Hospital.

2011

AMARA HARTLEY '11 married Lance Huffine June 28. The couple resides in Des Moines, Iowa. She is the donor and relationship manager for The Blank Park Zoo.

EMILY HURM '11 graduated with a master's degree in Chinese acupuncture and oriental medicine from Northwestern Health Sciences University in Bloomington, Minn., in August. She is a licensed acupuncturist and certified herbalist at the Acupuncture Wellness Center and Allergy Clinic of Iowa in West Des Moines, Iowa.

EMILY WIEDERIN '11 married **JOHN COFFEY '12** August 9.

2013

BROOKE CURRY '13 is the marketing coordinator at NAI Optimum and a freelance graphic designer.



EBRIMA JABANG '13 was recognized with The DAISY award in honor of the super-human work nurses do for patients and families every day.

2014



ZACH VOS '14 got engaged to **KYLIE LAMB '16** on the Golden Gate Bridge July 20. Vos is attending the University of

San Francisco, pursuing his master's in sport management.

Future Vikings



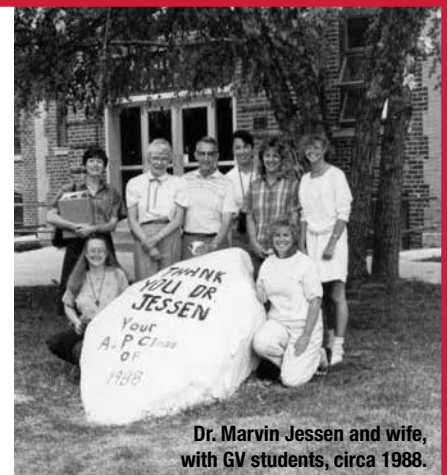
LACIE SIBLEY '07 and husband Luke, a daughter, Ashtyn Dawn, born August 29, 6 lbs 15 oz, 19.5 inches. Ashtyn joins big brother, Colbie, who is five, and big sister, Peyton, two.

WHAT WOULD GRAND VIEW BE WITHOUT THE ROCK?

Still a great school offering an excellent education, but it wouldn't be the same. We'd be missing our unique tradition of sharing messages with our community, and campus would be missing a piece of what sets it apart and makes GV so special.

It's the same with you and Grand View.

Without you, Grand View would not be what it is today. Your support sets GV apart and helps students reach their full potential.



Dr. Marvin Jessen and wife, with GV students, circa 1988.

CONTINUE TO BE A PART OF GRAND VIEW TODAY AND MAKE A GIFT TO THE GRAND VIEW FUND.

Visit www.grandview.edu/giving



ASHLEY (STAFFORD '09) HARKTORN and husband Nick, a daughter, Kennedy Porter, born August 2, 5 lbs 9.8 oz and 18.5 inches. Ashley was promoted to Project Specialist II at Strategic America Advertising Agency in West Des Moines, Iowa.

BENJAMIN TIGGES '14 and his wife, Andrea, a son, Noah James, born July 24.

In Memoriam

STELLA (HANSEN '35) NERVIG passed away June 22.

ARILD E. NIELSEN '39 passed away August 13.

BILL NIELSEN '39 passed away July 5.

IRENE (MAGNUSON '43) GOLLIDAY passed away June 25.

DOROTHY J. (PETERSEN '43)

MORTENSEN passed away June 25. She is survived by sons, Jeffrey and **Joel '71**; daughters, **Jill '75** and **Jan '74**; seven grandchildren and three great-grandchildren. She is preceded in death by her husband, **Harry E. "Mort" Mortensen '42**.

KRISTIAN HENRIKSEN '46 passed away April 19. He is survived by his wife, **Doris (Fredericksen '46)**, brother-in-law **Paul D. Sorensen '58**, and sister-in-law **Marie (Sorensen '55) Rasmussen**.

MARY (OLSEN '46) RIBER passed away November 9. She was a life-long member of the Grand View community and grew up near the corner of Hull and East 9th. She met her husband, Harold, while attending Grand View. After completing seminary, the Reverend and Mary were called to be missionaries in India. They continued their work there until 1973 when the Reverend was lost in a plane crash. Mary returned to Des Moines and lived with her parents on Boyd Street, the house which remained her home until she moved to Luther Park. After attending DMACC for secretarial classes in the 1970s, Mary became Grand View's Advancement Office secretary, a position she held until retirement in the mid-1990s. She is survived by her brothers, **Donald '54** and **Harold '58**, and sister-in-law, **Carole (Anderson '58)**.

VIRGIL CHRISTIANSEN '48, long-time Grand View supporter, passed away May 18. He is survived by his wife, **Bertha "Boots" Rix '46**.

KATHRINE GROSEN, '48 passed away February 14, 2014.

WILLIAM J. MORRISSEY '49 passed away December 5.

ROBERT L. SMITH '49 passed away August 25.

NANCY M. (ANNABLE '50) BAILEY passed away June 28.

ARMOND MILLER '51 passed away June 21.

BARBARA (BROWN '51) TATE passed away July 22.

ELIZABETH (JORGENSEN '52) LINDSEY passed away May 30.

SHEILA (WILLOUGHBY '57) HAINLIN passed away January 27. She was the Grand View Library serials assistant from 1997-2003.

VERNON F. WATERS '57 passed away October 19.

DAVID V. NIELSEN '58 passed away December 7 from cancer. While at GV, he served as U.K. Council president. He is survived by his wife, **Jeanne (Swendsen '58)**, two daughters and their husbands, four grandchildren, and sister, **Edith Jensen '47**. He is preceded in death by brothers, **Carl '50** and **Edward '48**. >>>



ALUMNI BIKE RIDE

THURSDAY MAY, 28 DEPART AT 5:30 PM

Ride the Walnut Creek Trail from 515 Brewing Company to Orlando's Bar and Grill. Bottled water will be provided at Orlando's. Complimentary drink and pizza will be provided by the Alumni Relations Office for those who return to 515 Brewing Company. The round-trip ride is 12.6 miles. This is a family-friendly event.

Sign up online at www.grandview.edu > Alumni or contact Katie at kroyer@grandview.edu or 515-263-2957.

Grundtvigian Scholar

Saturday, May 16
9 a.m. – Noon

Luther Memorial Church
1201 Grandview Avenue • Des Moines

Join Grundtvigian scholar Edward Broadbridge and his wife Hanna for a morning filled with singing hymns, discussions of Grundtvig's influence on the last 150 years and Edward's translation of Grundtvig's work. Light refreshments provided.

KENNETH PAULSEN '58 passed away July 25. He was employed at Grand View for more than 30 years as the registrar, director of financial aid, and director of admissions. He is survived by his wife, **Ellen (Elgaard '61)** and daughters Rebecca and Rikke.

LARRY L. SOWDER, '59 passed away October 4.

GARY G. GRANDSTAFF '61 passed away November 21.

KAREN KESSLER '66 passed away July 28.

MARGARET ANN "PEGGY" KELLY '67 passed away January 5.

DENNIS R. NIENDORF '68 passed away August 9.

JAMES R. BODENSTEINER '69 passed away June 24.

STEVEN LACKERSHIRE '72 passed away September 4.

KARL W. YOUNG II '72 passed away December 30.

STEVEN J. GRAESCH '73 passed away June 7.

BRIAN BARKS '77 passed away

August 14. He is survived by his wife, **Catherine '13**.

JOANN HUMPHREYS '80 passed away December 27.

DALE COWDIN '86 passed away October 25.

JANE DEHAVEN '90, passed away October 28. She was the director of new student programs at Grand View from August 1998 to March 2006. She is survived by husband, **Steve '06**, and daughter Amy.

THOMAS LAWSON '90 passed away July 27.

ELIZABETH "BETTY" NELSON '94 passed away November 29.

NICK POMMER '09 passed away December 7.

ASHLEY N. BELL '10 passed away January 15, 2014.

THORVALD HANSEN passed away January 27. He joined the GV faculty in 1966 and taught history and political science. He also worked as a GV recorder and served as archivist for the Danish Immigrant Archives. Thorvald attended

GV and Seminary in 1941 and was ordained into the ministry of the Danish Lutheran Church in 1946. As a student, he was the author and editor of the *Grand View Echo*. He went on to earn his baccalaureate degree and master of arts degree in government. He served parishes in Minnesota, Iowa, Nebraska, and South Dakota. Among his many publications, Thorvald authored *We Laid Foundation Here* in 1972 about the early history of Grand View College. This was followed by *Reflections* in 1974, a history of Luther Memorial Church. In 1996, he authored his second book about Grand View, *That All Good Seed Strike Root, A Centennial History of Grand View College*. Thorvald is survived by his wife, **Johanne (Johansen '47)**, and their daughters **Barbara (Hansen '88) Miller, Nancy (Hansen '76) O'Keefe** and Ellen Hansen.

BOB LARSON, Grand View trustee, passed away January 9. He became a member of the Grand View Board of Trustees in 1980, and in 1991, he became an Honorary member. During his term, he served as secretary, vice chair, and chair of the Board. He also contributed, advised, and assisted with GV fundraising. **GV**

WHAT'S NEW WITH YOU?

Something new in your life? We'd like to share your news in the GV Magazine Alumni News.

Send your information to GV Magazine, Lacie Sibley, 1200 Grandview Avenue, Des Moines, Iowa 50316 or email lsibley@grandview.edu.

Full name _____ Maiden name _____ Last year at GV _____
 Spouse full name _____ Maiden name _____ Last year at GV _____
 Street address _____
 City _____ State _____ Zip _____
 Email _____ Phone _____

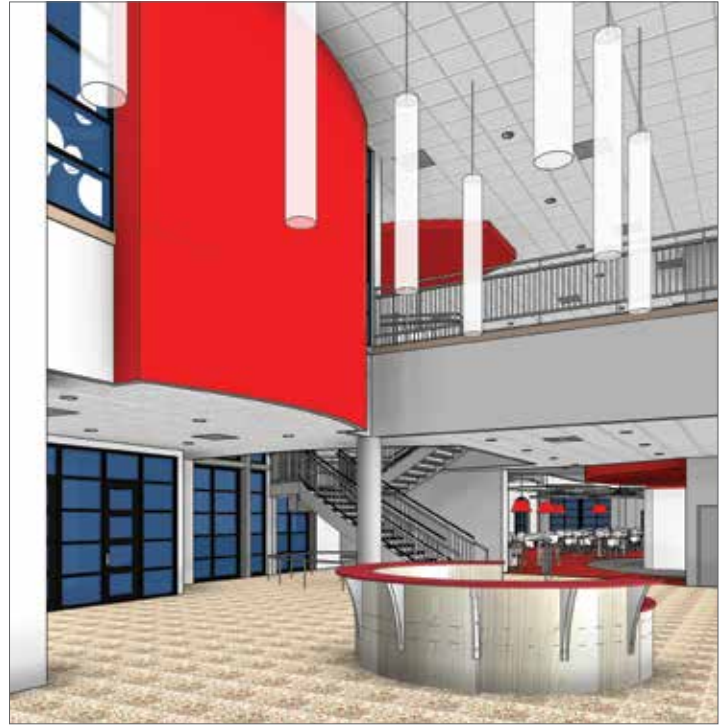
Please put a check by the news you want to share. New job Promotion Retirement Achievement Marriage Birth/Adoption Death

Photos are welcome and will be used on a space-available basis.

Details _____

Please send GV magazine in the following format: Electronic (Please include email address above.) Print

DAY
OF **G**IVING
MARCH 10-11 NOON-NOON



Construction on Grand View's Student Center began last spring. Be part of GV history and join fellow alumni as we give back to Grand View for 24 hours. Be part of the building that will support students' lives outside the classroom for years to come.

Grand View's Student Center serves as Grand View's community center. The expansion and renovation will help meet growing academic and co-curricular needs. The building will become the main welcome center and house Student Life offices, dining facilities, the Viking Theatre, the Communication Department and the Bookstore. The east and west sides of campus will be connected with a skywalk over East 14th Street between the Rasmussen Center and the Student Center.

Be part of Grand View's Day of Giving and donate!

Visit <http://grandview.kintera.org/dayofgiving>

CHANGE SERVICE REQUESTED

NOTE TO PARENTS: If this issue of GV Magazine is addressed to your son or daughter who no longer lives at your address, provide a change of address to Grand View. Contact the Alumni Office by mail, email kroyer@grandview.edu or phone at 515-263-2957.



Chicago Cubs Weekend Getaway

Cost: Single \$450, 2 per room \$575, 3 per room \$700, 4 per room \$825

Tickets are now available for a trip to Wrigley Field July 24-26 sponsored by the GV Alumni Relations office. The trip begins Friday, July 24, with an 11:30 a.m. departure from Grand View. Then get ready to cheer on your Cubs Saturday at 3:05 p.m. as they face the Philadelphia Phillies. The group will depart for Grand View Sunday at 11:30 a.m.

Alumni from the class of 2010 or later: receive \$25 off your total price when you sign up for the getaway!

**Contact Katie at 515-263-2957 with questions or to register.
Or register online at www.grandview.edu > Alumni**



July 24-26