

A COLLAGE OF
PERSPECTIVES:
GV STUDENTS
TODAY

In this issue you will meet a number of Grand View students. They were selected specifically to highlight the diverse backgrounds from which our students come. I think you will enjoy getting to know them. For us, diversity means much more than ethnic identity or national

origin. When we talk about the diversity of our student body, we also refer to the geographic, religious, and socioeconomic backgrounds represented in our campus community.

This increase in the diversity of our student body represents something that has changed over the years and yet simultaneously ties us to our founders' values. Our Danish immigrant founders established Grand View to provide a particular style of education

they wanted for their children and grandchildren. So in those early years, almost everyone here was of Danish descent.

In my shorthand version of Grand View's history, I say that during the 1960s, Grand View "became far less Danish and whole lot more Des Moines." Well, today we must be much more "of the world." In my activities on campus, I find myself cheering for soccer players from Scotland, Bosnia, and Altoona, Iowa, (and Denmark, too). I enjoy my regular interactions with our maintenance department employee from Gambia in western Africa. I've gotten to know several student leaders who came from Texas to play football and are actively involved in other campus activities. Our student government president grew up in this part of Des Moines. And during an exercise session recently, I met a student who is an East High graduate and whose last name is Jensen.

So if our student body is so diverse, how is it that our diversity ties us to our founding values? I turn to our mission statement. The last line says, "Grand



Photo: JIM HEEMSTRA

table of contents

A COLLAGE OF PERSPECTIVES: GV STUDENTS TODAY

8

Meet seven students who illustrate our diverse population.

HOMECOMING STUDENTERFEST 2009

15

A photo collage of traditional Homecoming and Studenterfest events as well as exciting new events.

HONOR ROLL OF DONORS

Thanks for doing your part to make Grand View better for our students.

View is a School for Life," an ideal that dates to our very founding.

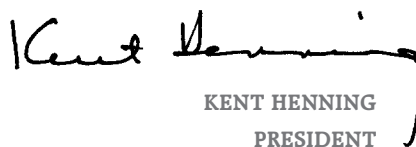
Being a "School for Life" in the 21st Century, however, requires us to nurture in our students an awareness of the world, an appreciation that we are connected to a global community. Our mission statement also asserts that we are committed "to preparing students for responsible citizenship in their communities and in a diverse and changing world." It says that we "affirm...a vision for life, a vision that respects the diversity and dignity of all people...."

For us to fulfill that mission, we welcome into our university community individuals of all backgrounds, faiths, and origins. In this environment, our students don't simply learn about living "in a diverse and changing world," they have some very real exposure and experience. Sure, we are a small institution. And many larger universities can claim an even more diverse student population. But because Grand View is a small, relatively close-knit community, the experiences our students have may be more direct

and genuine than those on a larger, less personal campus.

Our responsibility, though, goes far beyond recruiting students from a variety of backgrounds. In the classroom, our faculty members weave a "global awareness" component into the curriculum. Additionally, our director of multicultural outreach assembles a variety of activities throughout the year that are intended to inform our entire campus community about various cultures and perspectives.

Achieving and honoring greater diversity – broadly defined – has been embedded in our strategic plan goals for several years now. And as this issue of our magazine will affirm, we are making good and worthy progress toward meeting those goals...and fulfilling our mission.


KENT HENNING
PRESIDENT



FALL 2009
VOLUME 58, NUMBER 1

Editor LACIE SIBLEY '07
Designer KELLY (DeVRIES '00) DANIEL
Contributing Writer CAROL BAMFORD
Contributing Writer MOLLY BROWN
Contributing Writer MICHELLE EKSTRUM '07
Contributing Writer RACHELLE MITCHELL
Photographer JIM HEEMSTRA

Board of Trustees
Chair ROBERT S. DEWAAY

Marcia H. Brown	Paul E. Schickler
Michael L. Burk	Dawn Taylor
Eric W. Burmeister	Martha A. Willits
Gregory J. Burrows	
C. Dean Carlson	Honorary Members
Mary C. Coffin	Willard L. Bishop
Eric T. Crowell '77	Garland K. Carver
Bao Jake "B.J." Do	H. Eugene Cedarholm
Virgil B. Elings '58	Phillip D. Ehm '51
Thomas R. Gibson	Solveig E. (Peterson '61)
Vada Grantham '88	Gregory
Nick J. Henderson	Larry D. Hartsook '63
Kent L. Henning	Michael N. Hess
Richard Hurd '72	J. Robert Hudson
Richard O. Jacobson	Theodore M. Hutchison
Carey G. Jury '70	Charles S. Johnson
José M. Laracuente	Timothy J. Krumm
Robert L. Mahaffey '58	Robert E. Larson
James W. Noyce	James E. Luhrs
Marilyn Olson	Elton P. Richards
Sandra K. (Jensen '57)	John P. Rigler
Rasmussen	Clayton L. Ringgenberg

ON THE COVER...



Seven Grand View students represent a diverse population on campus this fall.

GV Magazine is published three times annually by the Marketing Department at Grand View University and is distributed at no charge to alumni and friends of the institution.

Constituents are encouraged to send contributions, suggestions and information for Alumni News to: Lacie Sibley, Editor; Grand View University; 1200 Grandview Avenue; Des Moines, IA 50316-1599 515-263-2832; lsibley@grandview.edu or fill out the form online at www.grandview.edu.

Grand View University
 1200 Grandview Avenue
 Des Moines, Iowa 50316-1599
 515-263-2800
 800-444-6083
www.grandview.edu

RECORD ENROLLMENT...AGAIN!

BY RACHELLE MITCHELL, MANAGER OF EVENTS AND PUBLICITY

Grand View is pleased to announce a 4% increase in full-time enrollment this year – to 1,600 students, up from 1,536 last fall. The total number of students is now over 2,000, a 3% overall increase. This is another record year for the university in both full-time and total enrollment. Since the fall of 2003, Grand View's total enrollment has increased by 23%.

According to Deb Barger, vice president for enrollment management, there are several reasons for the increase. "We attribute our growth to new academic programs, new athletic programs – including football and wrestling – as well as new facilities, and

a general positive interest and increased awareness," comments Barger. "There is a lot happening right now at Grand View."

Also responsible for the record enrollment is Grand View's first graduate program, the Master of Science in Innovative Leadership. This interdisciplinary degree, which focuses on leading for change and innovative strategic thinking, is composed of a common core of courses and three "tracks" – business, education and nursing. The initial cohort of students enrolled this fall. **GV**

Students wait to order lunch at Stacks Deli. photo: KELLY (DeVRIES '00) DANIEL



GV HOSTS LATINO CONFERENCE

Grand View hosted the eleventh annual Strengthening and Valuing Latino/a Communities in Iowa conference October 9. Nearly 200 people attended.

The conference offers an opportunity to explore the changing demographics and dynamics of Latina/o communities in Iowa, as well as the responsiveness of policy makers, business leaders and community-based organizations to the fastest growing population in Iowa. The conference has grown to be a cherished gathering of Latinos and non-Latinos as a place to emphasize culture as a strength and provide networking opportunities.

Alex Piedras, director of multicultural and community outreach, said, "The conference is an excellent way to connect with high school students and for the GV community to learn more about the largest ethnic group in Iowa." **GV**

FORMER PRESIDENT LANGROCK PASSES AWAY

Rev. Dr. Karl F. Langrock, 82, president of Grand View from 1972 to 1988, died at his home on October 14.

During his time at Grand View, Langrock led the school in its transformation from a junior college to a four-year baccalaureate degree-granting institution accredited by the North Central Association, with the first four-year degree program in nursing beginning in 1975. Twenty-two BA degree programs soon followed. He oversaw the construction of the Student Center and the Cowles Communication Center. He

was a member of the Iowa College Aid Commission in Des Moines from 1980 to 1984, and president of the Council of Lutheran Church in America Colleges in 1978. He was also a member of the Iowa Association of Independent Colleges and Universities, serving on the board of directors from 1972 to 1987, and as chairman of the board from 1986 to 1987. In 1989 he was conferred an honorary Doctorate



of Letters degree by Grand View in recognition of outstanding achievement in literature as an author, critic, interpreter and educator.

Born in Toeterville, Iowa, on January 26, 1927, Langrock served in the U.S. Navy during World War II from 1945 to 1946 following his graduation from high school. In 1949, he received a BA degree in mathematics from the University of Northern Iowa. While attending UNI,

MICHAEL NORRIS NAMED DIRECTOR OF GRADUATE STUDIES

On August 17, Michael Norris joined the staff as the first director of graduate studies. He is responsible for building the fledgling graduate program. From recruiting prospective applicants to advising current students, Norris has a passion for working with graduate students.



"I truly enjoy recruiting and advising graduate students, so I look forward to developing a strong rapport with prospective graduate students and continuing the relationship throughout their two years in the program and beyond," said Norris.

Norris takes over from trustee Carey Jury '70, who served as interim dean of graduate studies and enrolled the program's first cohort. Jury has already introduced Norris to key employers in central Iowa, many of them members of

he met Rose Marie Meyer and they were married on June 4, 1950. In 1951, he received an MA degree in economics from the University of Iowa. Upon graduation, he was employed by Bankers Life in Des Moines from 1951 to 1952. After that brief time in the corporate insurance world, he decided to enter the field of theology, receiving a Bachelor of Divinity degree from the Lutheran School of Theology in Maywood, Ill., in 1955. He was ordained into the ministry of the United Lutheran Church of America. Prior to his service at Grand View, Langrock

the three employer councils who assisted in developing the degree and continue to advise the Council of Graduate Studies.

Born and raised in northwest Iowa, Norris received his BA from Simpson College in Business Management and Sports Administration and his MBA from Drake University. Norris spent five years as the assistant/associate director of admissions and financial aid at Drake University Law School. He also recruited undergraduate students as an admissions counselor at Simpson College.

Norris and his wife, Jessica, an attorney for the State of Iowa, live in Altoona and have two children, Grady and Emory. He enjoys spending time with his family and being outdoors.

Norris is an active member of the Alumni Board of Directors at Simpson College, Greater Des Moines Partnership's Young Professionals Connection and the Altoona United Methodist Church. **GV**

served in a pastoral capacity for several congregations. In 1969, he was named Associate Director of Development as an assistant to the President of Berea College in Berea, Ky.

Memorial services were held October 21 and October 31 in Oregon and Iowa, respectively. A committal service followed at St. Peter's German Lutheran Cemetery in Toeterville.

Memorial contributions can be made to Lutheran Social Services of Illinois (www.lssi.org) or Grand View University (www.grandview.edu). **GV**

GV NEWS IN BRIEF

ADMISSIONS OFFERS ACTION AND SCHOLARSHIP DAYS

The Admissions Office, along with several academic departments, hosted action days for prospective students to get hands-on experience this fall. Students were invited to participate in hands-on activities related to their field of interest as well as hear from current students and faculty. Departments offering action days include: art, biology, business, communication, education, math and computer science, nursing, social sciences and theatre.

Three Scholarship Days are planned for eligible prospective students to compete for additional scholarship dollars. Students visit campus and complete a survey as well as interview with faculty and staff.

GV HOSTS REGIONAL ACADEMIC DECATHLON

Grand View hosted a practice competition of Academic Decathlon for Des Moines-area schools November 14. Teams consisting of six to nine students, plus coaches, from several local schools, including Central Academy, East High School, Hoover High School, Lincoln High School, North High School and Roosevelt High School attended. The students participated in seven tests and were presented awards at the afternoon awards ceremony.

WORLD FOOD PRIZE CONVOCATION

October 15 marked the annual Fall Convocation with focus on the World Food Prize. Dr. Pedro A. Sanchez, 2002 World Food Prize laureate, addressed the campus community on the topic of "The African Green Revolution Moves Forward." **GV**

A HOLYLAND JOURNEY

BY RACHELLE MITCHELL, MANAGER OF EVENTS AND PUBLICITY

Several members of the Grand View community traveled to Israel last June for 11 days. The group was comprised of Grand View administration, staff, faculty, family and friends.

Dr. Mark Mattes, professor of religion and philosophy, and Dr. Idit Hazan, associate professor of biology and Israel native, were the forerunners for making this trip happen.

According to Hazan, the most powerful part of the trip for her was "getting to be a tourist in my own country. Seeing things I haven't seen in years and sharing my

experiences with the rest of the group."

An invitation was sent to all faculty and staff welcoming anyone to take part in this opportunity. Three meetings were held covering various topics including Israeli culture, food, mannerisms, and Bible passages relating to the places and history the group would be visiting. The goal was to make this a cultural and religious trip and this group definitely met their goal!

The 11 days were action-packed, and a detailed itinerary was provided for everyone before leaving the U.S.

The group also had a guide who traveled along side them and gave them a good perspective of the Israeli world view.

Highlights included traveling to Tel Aviv, Galilee, and Jerusalem. There were many places of interest within these cities.

Ellen Strachota, associate vice president for academic

affairs, comments "The most powerful place was Galilee, being at the lake and thinking 'that's where Jesus probably walked.' It was an amazing feeling." **GV**



From top: Dr. Mary Elizabeth Stivers, provost and vice president for academic affairs, and Dr. Kathy Peterson, professor of psychology, inside the remnant of an old Syrian military bunker in the Golan Heights, atop Mount Avita. The group dipped their feet in the Jordan River at Yardenit, a site on the Jordan River in which many are baptized. The group posed in Jerusalem. photos submitted by DR. IDIT HAZAN, RONDA HOLLENSBE, AND BOB MYERS



student success

GABE COCO '09 and **ENISA JUKIC '09** appear as extras in the movie "Janie Jones" being shot in Des Moines. Jukic also is an extra in the movie "Smitty."

ALESHA DAMERVILLE '09 is on the production crew for "Janie Jones." She was on the winning team from the Des Moines 48 Hour Film Festival that will compete at nationals in April.

CHELSEA FRANCISCO '12, and **BEN TJADEN '09**, Phi Beta Lambda (PBL) members at Grand View, attended the National PBL Leadership Conference in Anaheim, Calif., June 20-23. Tjaden competed in Sports Management and Marketing and Contemporary Sports Issues and Francisco competed in Accounting Principles and Business Communications.

MOLLY HOTTLE '10 was recognized as a national finalist in the Society of Professional Journalists' (SPJ) annual Mark of Excellence Awards contest, which recognizes the best of collegiate

journalism. SPJ recognized Hottle in the Breaking News Reporting category for an article she wrote for the Des Moines Register. To be considered for the national competition, Hottle first won at one of SPJ's 12 regional competitions. At the regional competition, she also placed second in the Feature Writing category.

JEFF ROST '10 participated in the Hesselbein Student Leadership Summit July 11-14 at the University of Pittsburgh in Pittsburgh, Pennsylvania. This leadership academy selects 50 students from across the United States to attend. The criteria for this selection was determined by the unique ways in which Rost is an accomplished leader on campus and in his community.

CHERYL SEASE '10, English major, has been awarded the Bailey Prize. The Bailey Prize is open to nominations by instructors of undergraduate and graduate students in the arts and sciences for nonfiction, fiction, and poetry. Sease was nominated by Dr. Paul Brooke,

associate professor of English, for her short story "Old Junk." Her short story will appear in the 2009 Chrysalis Reader.

ALT, the honors magazine produced by art and communication students, was named one of 10 finalists for the Associated College Press Magazine Pacemaker awards, which honor general excellence in collegiate magazines nationwide.

Students working on the publication included: **DANIELLE AMELING '09, JADIE BROCK '09, LISA DAVEY '09, ANDREW DAVIS '09, RYAN GASS '09, DINKO IBUKIC '09, ANGELA JOHNSTON '09, LACEE JONDAL '09, KRISTY KNAPP '09, SAMMY LEUNG '10, HOLLY POORT '09 AND EMILY SVEC '09.**



Check out the GV magazine online at www.grandview.edu
>Alumni



upcoming events

SCHOLARSHIP DAY

Sunday, November 15, 11:30 a.m. – 3:30 p.m.
Charles S. Johnson Wellness Center

JULEFEST

Sunday, December 6, 4:00 and 7:00 p.m.
Luther Memorial Church
Call 515-263-2991 to reserve your free tickets.

NURSING PINNING CEREMONY

Friday, December 11, 6:30 p.m.
St. John's Lutheran Church

SCHOLARSHIP DAY

Sunday, January 24, 11:30 a.m. – 3:30 p.m.
Charles S. Johnson Wellness Center

NIELSEN CONCERT SERIES: RED CEDAR CHAMBER MUSIC

Sunday, January 24, 3:00 p.m.
Student Center Viking Theatre

MULTICULTURAL VISIT DAY

Wednesday, February 10

VIEW THE VIKINGS NIGHT

Wednesday, February 10

SCHOLARSHIP DAY

Sunday, February 21, 11:30 a.m. – 3:30 p.m.
Charles S. Johnson Wellness Center

NIELSEN CONCERT SERIES: POLARIS WIND QUINTET

Sunday, February 28, 3:00 p.m.
Student Center Viking Theatre

Check out the GV magazine online at www.grandview.edu
>Alumni



LET THE CREATIVE JUICES FLOW

BY LACIE SIBLEY '07, EDITOR

Before coming to Grand View as an assistant professor of art and design, 2003 Grand View grad Josh Ryther owned and operated a design business in New York City. In 2007, he and his family returned to Iowa where he continued to own and operate his business, Carnival Designs, which offers creative consulting services and specializes in branding and re-branding. He installs artwork regionally and works with clients across the country.

Ryther said his interest in art came early in life, and he attributes most of it to his grandmothers.

"My grandmothers were crafty people," Ryther said, "and very influential in my early years. I attended Grand View for both my undergraduate degrees, one in graphic design and the other in visual arts. I went on and received my MFA from Kansas State University."

Most of Ryther's art comes together in the form of installation artwork. This usually consists of multiple pieces of work



JOSH RYTHER

that come together in a space to create a space-specific piece of art.

"While these pieces could be viewed singularly, they're intended to be viewed as an installation because each piece forms the next during creation and exhibition," Ryther explained.

Ryther decided to obtain his MFA to better understand his artwork and the work of other artists. While working towards his MFA, he had the opportunity to teach undergraduate students and discovered that teaching was one of the most rewarding experiences in his life.

"I engage my students through challenging problems, creative thinking exercises and significant discussion," Ryther said. "Creative problem solving and critical thinking are the core principles in creating work that is relevant."

Striving to support his students and their artwork, Ryther exposes them to the work of other artists with similar styles of art in order to create some relevance for their work. It's also good practice for young artists to see the process of creating art and begin to understand that it is a process, one with failure and success.

"Art makes art," Ryther said. "All artists have influences and need influences to help challenge and motivate them. Young artists, especially, need to see that anything is possible, and somehow seeing other artists challenge themselves and take risks tells a young artist it's ok."

Ryther hopes his students do what they want with their artwork and not what someone else wants them to do

faculty & staff accomplishments

KAREN ANDERSON, dean of the College for Professional and Adult Learning; **CATHY BRENT**, director of academic advising; **PAM MILLOY**, director of the Center for Excellence in Teaching and Learning; and **JANET WOODRUFF**, lecturer of business, presented at the Way Up Conference November 5-6 in West Des Moines.

DR. LUCAS BENNETT, assistant professor of mathematics, was selected for Project NExT (New Experiences in Teaching), a professional development program for recent PhDs in mathematical sciences.

DR. THERESE JUDGE, associate professor of English, presented at the Fifth International Symposium on Text Genre Studies, August 11-14, in Caxias do Sul, Brazil. Judge's presentation was "Defining the genre of Mexican business e-mail."

DENNIS KAVEN, professor of art and design, and **AARON TINDER**, associate professor of art and design, taught a workshop for the Des Moines Public Schools in June. This program was coordinated for Des Moines Public School art teachers. Art teachers created mixed media art pieces during the first week of

the workshop. During the second week, the art teachers presented the program to 80 talented and gifted students.

DR. BECKY LANG, professor of health and physical education, attended the Wellness Council of Iowa, Partnering for Change: Building a Healthier Iowa Workforce conference October 1. In July, Lang attended Motivational Interviewing and Behavior Change at the National Wellness Conference in Stevens Point, Wis.

MARK MATTES, professor of religion and philosophy, presented three lectures at a

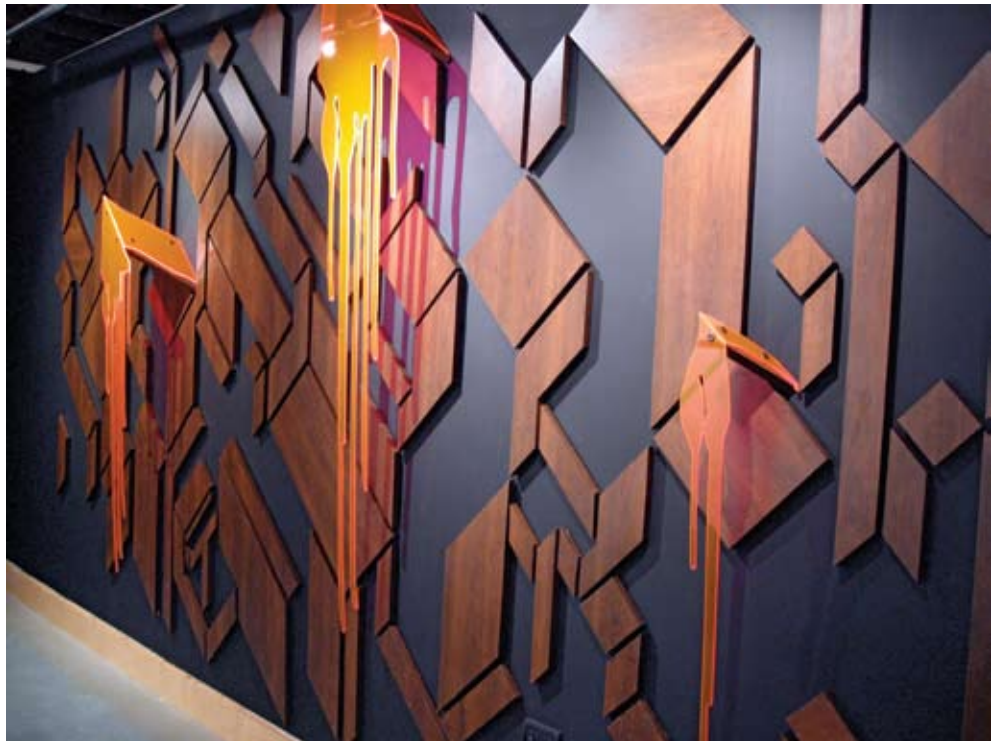
“ I engage my students through challenging problems, creative thinking exercises and significant discussion. Creative problem solving and critical thinking are the core principles in creating work that is relevant. ”

with it. The opportunities in art are endless and, because of that, Ryther encourages his students to approach art with an open mind.

“Later in my undergraduate education, I became less and less gratified by the work I was creating as I was too focused on aesthetics and neglecting the intellectual side of the work,” Ryther said. “This is a balancing act for all artists.”

Students respond positively to Ryther’s artwork. In turn, he hopes that his work and how students perceive it challenges them and their own creativity.

“The opportunities I’ve had in art and design have been directly related to the amount of work I’ve put in on each and every project. Talent is great but hard work is the key to success.” **GV**



Josh Ryther's installation art from a show at the Rosalux Gallery, displayed November 1 –30, 2008. The title of his design was Building Something Out of Nothing. photo submitted by JOSH RYTHERR

Discipleship Weekend in Columbia, South Carolina, October 2-3.

DR. LAURA SALAZAR, professor of chemistry, and **DR. CORBIN ZEA**, associate professor of chemistry, contributed to the abstract “Measuring the Stability of Carbocations via a Chemical and Computational Approach” for a poster presentation to the American Chemical Society regional meeting October 21-24 in Iowa City, Iowa.

SUSIE STEARNS, director of the Career Center, has been chosen as President Elect – 2009/2010 term, for the Iowa College

Recruiting Network (ICoRN). Stearns will assume the president position for the 2010-2011 academic year.

DR. ROBIN TRIMBLE WHITE, professor and chair of the Education Department, was recognized with the following awards: The Distinguished Service Award by the Iowa Association of Family and Consumer Sciences; the Friends of Family and Consumer Sciences Award by the Iowa Family and Consumer Sciences Educators for Progress; and the Oran Beaty Leadership Award by the Iowa Career and Technical Education Association.

STEVE WINZENBURG, professor of communication, had articles published in “Radio and Records,” “The Business Record,” and “The Chronicle of Higher Education.”

ALEC ZAMA, assistant professor of business administration, presented two papers at the Midwest Academy of Management October 23-24 in Chicago, Ill. The papers were: “Propositions for a Natural Experiment” and “A Protean Approach to Global Careers.” He also facilitated the session Organizing Futures with Ethics, Influence, and Enforcement. **GV**



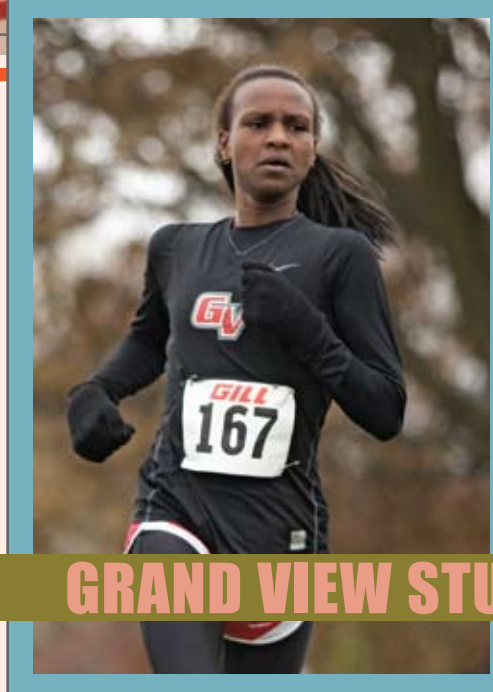
A

collage of

PERSPECTIVES

BY CAROL BAMFORD, VICE PRESIDENT FOR MARKETING
AND MICHELLE EKSTRUM '07, WEB CONTENT MANAGER

When asked what she found surprising about Grand View, sophomore Obsie Birru, said, "The diversity and cultural awareness on campus. There are so many different kinds of people and backgrounds; it's almost as if we're not just going to school for a career but rather to learn how to get along with other people!"



GRAND VIEW STUDENTS TODAY

The concept of diversity is one many of us associate primarily with ethnicity, but diversity is much broader than that. It can encompass aspects like gender, geographical background, age, and religious preference as well. As Grand View has grown and changed over the years, the student population has become more diverse, an increasingly fertile blend of backgrounds, cultures and perspectives.

In the years since 2003, the Grand View student has been getting a little “younger,” with a drop in the average age of a whole year, for both full-time day students and the overall student population. And there are more men on campus – a full ten percentage points more – with a male to female ratio of 40% – 60%. Our ethnic mix is now 14% non-white (of those choosing to report ethnicity). While many students don’t indicate a religious preference, there are 20 students this year who identify themselves as Muslim, among the 23% who are Roman Catholic, the 38% Protestants and the 32% who express “other” religious preferences.

In many respects, it is geographic background that has changed the most,

though. In 2003, 91% of our freshman came from Iowa; in 2009, that number is 82%. In the student body as a whole, 27 states and 12 countries are represented, with 24 international students on campus this year. Eighty-percent of our freshmen live on campus today, compared to 61% in 2003, which is yet another indicator of a geographical shift. Students from Texas, New Jersey and Alaska – or Australia and Viet Nam – for instance, come to Grand View with experiences and cultural perspectives that are different from our Iowa and other Midwestern students.

Another geographical change is the mixture of students from rural, small-town and urban environments. More of our Iowa students come from rural and small-town backgrounds than has typically been true in the past, a trend that’s been a gradual one over the past several years. As they interact with those from urban areas, especially in other states, there is a diversity of experience from which everyone learns.

According to Debbie Barger, vice president for enrollment management, the increased diversity on campus can be attributed to several factors: “There’s no question that the addition of football

and wrestling has changed Grand View’s gender balance, which has been skewed toward women for a long time, mostly because of our strong nursing and education programs. Our male/female balance now looks similar to the average at colleges and universities across the country. Those sports have also contributed to increased geographic diversity as well.

“But one of the biggest factors in our increased diversity generally is that it has been a goal for us, one we’ve been working to achieve. It’s harder for smaller campuses than it is for large universities to provide students with breadth and depth of exposure to different kinds of people with varying backgrounds and experience, yet we think we’re achieving that. Our students seem to think so, too.”

Perhaps the best way to get a feel for the Grand View student of 2009 is to get to know a few of them. The rest of this article features seven of our students. We hope you enjoy their stories.

The President’s column on the inside cover offers some insight into why we value diversity and what it brings to academic and co-curricular offerings.



photos KELLY (DEVRIES '00) DANIEL, ANDREW DAVIS '09, JIM HEEMSTRA, KEVIN SANDERS '08, MITCH STUBBS AND CHRIS WINKEL

Obsie Birru

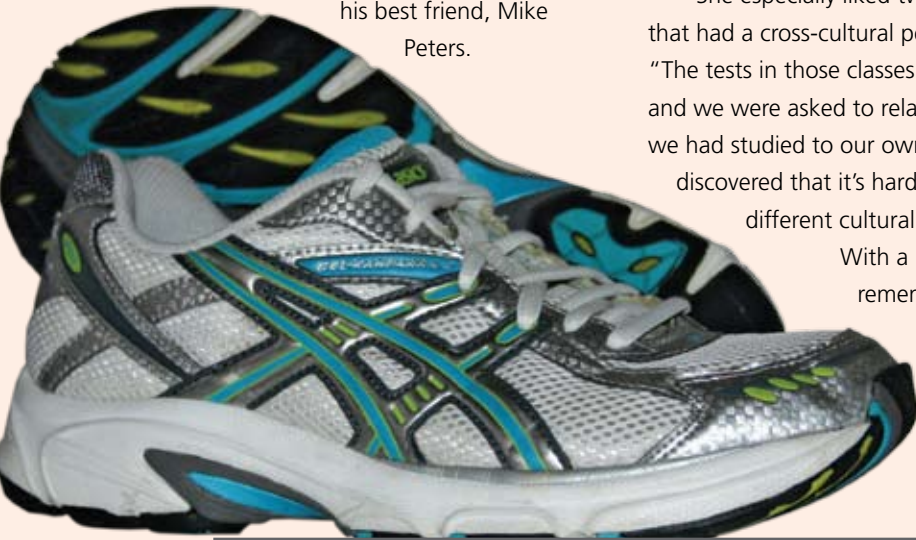
In 1972, Debela Birru came to the U.S. as a foreign exchange student from Ethiopia, attending Des Moines East High School for his senior year. His host family



was that of the Rev. Lyle Peters, who was then pastor of Luther Memorial Church. After a few years back

in his native country, Debela officially immigrated, coming to Des Moines once again. At Rev. Peters' suggestion – and with his help – Debela enrolled at Grand View, which was then a two-year college, graduating in 1977. Among the activities Debela enjoyed at Grand View was

Danish Folkdancing, teamed with his best friend, Mike Peters.



Fast forward to 2008, when his daughter, Obsie, adopted from Ethiopia when she was twelve, became the second generation of the Birru family to attend Grand View. Obsie, a championship runner in both women's cross country and track & field who graduated from Johnston (Iowa) High School, was looking for a small school with small classes and the right environment.

"I knew I could run anywhere," she said. "I wanted to be comfortable, and my dad's memories of Grand View are so good."

Obsie, a health promotion major, commented on how friendly and helpful the faculty and staff are. "I love people and helping them. There are so many positive examples of that on campus that I decided to become a peer leader in New Student Seminar. So I'm helping students who are new to Grand View, just as I was last year."

She especially liked two of her classes that had a cross-cultural perspective. "The tests in those classes were all essays, and we were asked to relate the concepts we had studied to our own lives. I discovered that it's hard to think about different cultural experiences."

With a laugh, she remembered President Henning's words at the opening

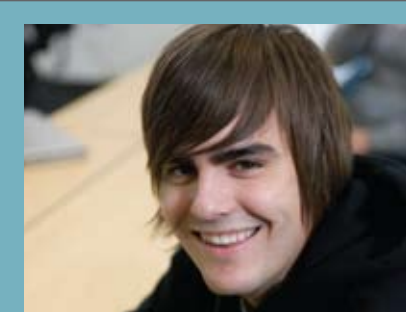
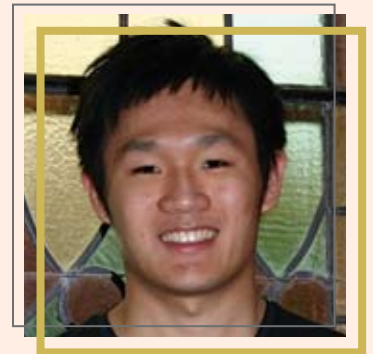
convocation her freshman year. "He told us to look around us and we would see the people who would become our best friends for life, maybe even the people we would marry." I thought that was pretty far-fetched at the time, but I met my boyfriend here and we've been together a year!"

Obsie has been involved in campus ministries and attends many events on campus. But beyond academics and activities, much of her time is taken up with running. Last spring she placed sixth in the 10,000m run at the NAIA Outdoor Track & Field Championships, earning All-American status as a freshman.

Sammy Leung

When asked why he chose to come to Grand View, senior Sammy Leung said it was an accident.

"As I was finishing my studies in Hong Kong, I was afraid I wouldn't be able to pass my high school exams. Then my girlfriend and I broke up, and I really didn't know what to do. My mother suggested that I come to the U.S., to Des Moines, to live with my uncle. I guess she thought the change would be good



GRAND VIEW STUDENTS TODAY

for me. So I got a student visa to attend Iowa State.”

After a semester commuting to Ames from his uncle’s home in Beaverdale, Sammy decided it was time to look for an alternative, and since Grand View was close by, he decided to give it a try. Six years and four majors later, Sammy will graduate this spring.

“I originally wanted to study fashion design, but the closest program is in Chicago. So I decided on graphic design instead, and Grand View has a great program.” As he progressed in his studies, Sammy discovered that he wanted a strong grounding in business, in addition to graphic design. When he graduates, he’ll have completed additional majors or concentrations in accounting, finance and marketing. That combination will prepare him to run his own business, perhaps in graphic design, advertising or another area.

Growing up in Hong Kong, Sammy started learning English in kindergarten, but he didn’t really have an opportunity to speak the language until he moved to the U.S. And that’s been his biggest challenge academically. He’s often reluctant to speak up in class, fearing that he won’t be understood or that he’ll misspeak. But he’s found that most of his fellow students and his professors are very understanding. When he needs help with writing in English, he usually turns to



his aunt, who is a native speaker. Grand View’s small classes and the willingness of his professors to understand his situation and help him over the hurdles has been a real plus.

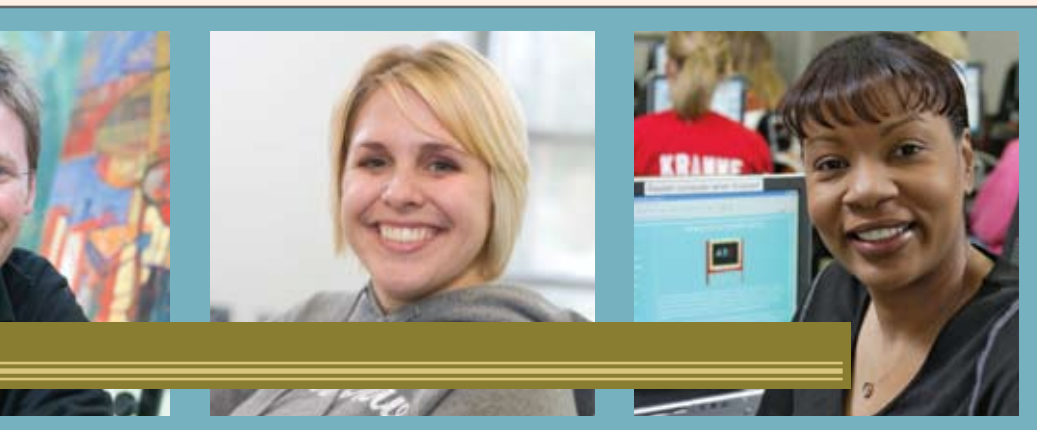
With the academic load he carries, Sammy doesn’t have much time for involvement in other campus activities. This semester, in addition to a full class load, he’s doing an internship at Meredith Corporation as a graphic designer in the marketing department. While he’s committed to the business portion of his studies, graphic design is where his heart is, especially when he can use it to contribute to his adopted community. He recently designed the cover of the program for Iowa’s Mosaic Diversity Conference, a statewide training and networking opportunity for those interested in human diversity.

One of the aspects of Grand View Sammy appreciates the most is the attention paid to the Art and Design Department. “There are more students enrolled each year, and the program is really growing. The new facilities –

with very fast computers and large, comfortable studios – allow us to do more professional work. I especially like the Gallery.”

Amalia Mejia

Amalia Mejia, a freshman graphic design major from Medellin, Colombia in South America, comes from a golfing family. As she considered her options for college, Amalia decided she wanted to come to the U.S. to study – and play golf. So she signed up with College Prospects of America, a company that connects athletes with coaches around the world. Soon she began to hear from golf coaches, Grand View’s Chris Winkel among them. As her correspondence with Coach Winkel continued, Amalia discovered Grand View’s Department



of Art and Design, and when she was offered a golf scholarship, she knew she was on her way to Iowa.

"Education is different in the U.S. than it is in Colombia. I wanted to open my mind, to learn about other cultures and share my own culture with others who might not know anything about it. Coming to Iowa from Colombia wasn't an easy decision, and I do miss my family, especially my younger sister. I just couldn't even imagine how it was going to be to go to school in another country, not knowing anyone at all. But everyone is so friendly and helpful here! I'm really happy at Grand View."

Amalia embraces her studies, her sport and her new-found friends with relish. "I love my art classes...I love everyone on the golf team...I just love the campus and everything about Grand View," she says. She goes to football and soccer games, played a little Power Puff football, and just generally gets involved. Later on she plans to join the Art Club.

When asked about how things are different here, Amalia says she likes the way her American friends think, how they

approach life. "Most of them work and go to school, too. In Colombia you don't see much of that. And there are lots of different kinds of people here. One of my best friends on campus is from South Africa. We often have lunch together and teach each other about our cultures. One thing that does bother me, though, is that people associate Colombia with drugs – that's all they know about my country. So I try to help them know other things."

Amalia said she wasn't used to writing in English at first, so she'd write her assignments in Spanish and then translate them into English. She gets some tutoring in English from one of her professors and is getting more comfortable writing in English the first time. "I haven't had any difficulty understanding my professors, because the English they speak is the kind of English I learned in Colombia. But it's really hard to understand the slang younger people use! I just ask what something means, and my friends tell me."

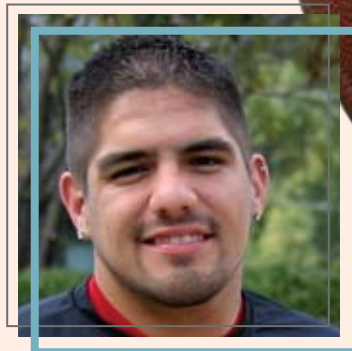
Medellin, Colombia, with a population of three million people, is the second largest city in Colombia. It's also situated in the most temperate climate in the world, with constant year-round temperatures ranging from 52° to 86° and averaging 72°. That's why it's called "The City of Eternal Spring." Iowa seasons are likely to be one of Amalia's cultural learning experiences.

Joshua Moncivais

Joshua Moncivais, a sophomore pre-engineering major, came to Grand View from Houston, Texas, where he played high school football. "I knew Coach [Woodley] was recruiting kids to come here for football. He wasn't looking at me, so I started emailing him, pushing him to take a look at me. I knew I wanted to play football in college, and I thought this was my chance."

Born in Texas, Josh moved with his family to Panama, his mother's native country, when he was a year old. They moved back to Texas when he was eight. Then, when he was a sophomore in high school, his mother had to return to Panama. Josh and his younger brother stayed in Texas, and their older sister raised them until the end of high school. "She couldn't make decisions for everything because she wasn't our legal guardian. It was tough sometimes but we made it through."

Josh is involved in football and the Viking Brigade, an organization of students who attend and cheer at various GV athletic events. He comments,



GRAND VIEW STUDENTS TODAY



"Athletics are an important part of campus life at Grand View, and while the football team gets lots of attention – because it's football and because it's new – I think it's important for us to support all of Grand View's sports teams."

But athletics share the spotlight for Josh with academics. He tutors in History and is a peer leader for freshman INTS classes, the new student seminars that help students explore the expectations of a liberal arts education and identify their own strengths and challenges as learners. As a peer leader, he helps students new to Grand View get the hang of studying and thinking differently than they've been accustomed to.

His favorite part about Grand View is the positive interaction between faculty and students. "As a freshman I kept getting low grades in English. Writing papers is tough! I turned to the Writing Center. That's a good tool on campus. I like the challenge that my English professor gave us; she's a good teacher. College is supposed to challenge you."

Among Josh's new experiences were snow and dorm life. "It's neat to have a

changing of the seasons. And dorm life my freshman year was really cool. We had a lot of fun."

Josh enjoys the people on campus the most of everything he's experienced at Grand View. "I've built good relationships. I feel like people look up to me; other students respect me. That's a good way to feel. I have good friendships here and try to be a good influence. Everyone is friendly and easy to talk to. It's better than I thought it would be; it's been a good experience."

Kendra Fuller

At the age of 33, with a three-year-old daughter, sophomore Kendra Fuller is among Grand View's non-traditional students. Originally from Lawrence, Kan., Kendra came to Des Moines after she was divorced and met someone new from the Des Moines area.

"I had just started back to school and realized I wanted to major in psychology. After my divorce I knew I needed to go back to school. When I got here, I looked around at all of the schools in the area and found Grand View. I liked the size, and Luanne, my admissions counselor, was awesome! I knew this was where I was supposed to be."

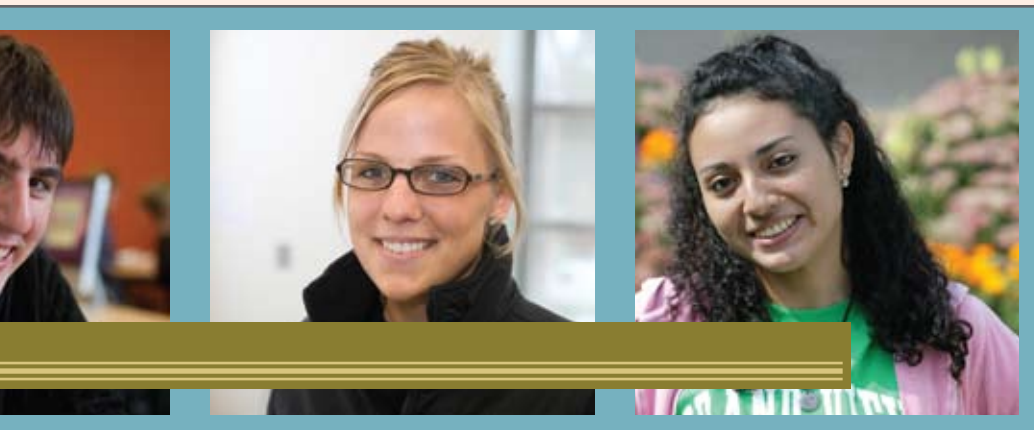
Kendra experienced the kinds of

concerns that many adult learners have. Would she be the oldest student in her classes, especially as a full-time day student? How would she cope with all the other pressures on her time and attention and still succeed in school? And were her study skills up to par? What she discovered is the web of support that Grand View's long experience with adult learners brings.

She has a busy life outside of school but has managed to make some connections on campus. She's glad the class sizes are small and enjoys having many of the same people in more than one class. "Your professors know you. Even being an older student I can talk to

someone. They've been very flexible. You really need flexibility when you have children. My professors have worked with me when my daughter has been sick. That's great!

"I feel like I'm learning, and I'm engaged in all of my classes. It's a good experience and not too stressful. I feel like my professors give me the freedom to say what I think and make my argument. I like that."





Zach Frank

Zach Frank is right at home at Grand View. A freshman biology major, he graduated from North High School in Des Moines. He works at the North Side Public Library and has friends from



high school who were already on campus when he came this fall.

"I looked at other schools like Drake and Simpson, but I wanted to stay close to home. I felt like at Grand View I could be myself. I didn't have to play a role or be a number. I came to the Biology Action Day and really liked what the Biology program had going on."

Zach was selected as a Presidential Ambassador. This elite group of future leaders, chosen by invitation of the president based on academic achievement, represents Grand View at functions with President Henning and also has the opportunity to meet Grand View trustees, as well as community and business leaders. Through their activities, Presidential Ambassadors learn leadership and presentation skills, have exposure to networking techniques that will serve them well in their careers, and get to know people who become mentors and role models. Their contact and interaction with each other is also a plus.

Zach has also done mission work with the Mennonite Missions Network in Colombia, South America, and volunteers

his time in Des Moines with Lutheran Social Services, helping set up refugees in apartments and getting them what they need.

On campus Zach has made some new connections and hangs out with his old friends as well. "Logos, one of Grand View's honors programs, provides the opportunity to make good connections because I have several classes with the same people. I don't live on campus, so that helps...and I'm making new friends."

Balancing time has been difficult for Zach since he started college. He's been using his planner and making sure he gets everything done. His natural inclination for involvement can lead him to over-extend. "There are way more clubs than I thought there were and so much to do! I love how you can approach your professors, and they'll take the time for you. Grand View is really cool."

Dan Chamberlain

Dan Chamberlain, a junior transfer student, is originally from Harlan, Iowa and moved to Ankeny to attend DMACC two years ago. After receiving his associate's degree at DMACC, he came to Grand View for the new biotechnology major.

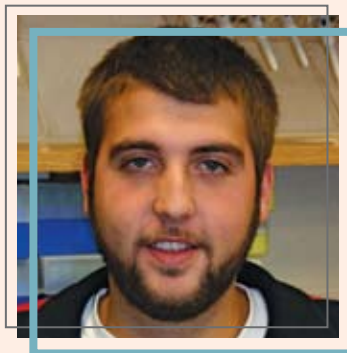
"Biotechnology is a new and exciting major. If we're going to feed all of these people on earth, then biotechnology is going to help accomplish that," he said.

Biotechnologists use living organisms or substances from those organisms to make or modify a product, to improve plants or animals, or to develop microorganisms for specific uses. Biotechnology plays a large role in modern foods and medicines. For example,

many fruits and vegetables we know today were produced by crossing two different species, such as crossing a plum and a peach to get a nectarine. The science is also being used to improve traditional foods called functional foods, such as golden rice with vitamin A, soybean oils with less saturated fat and more omega 3, plants with more active vitamin E, potatoes with higher protein content, antioxidants in berries, peanuts without the allergenic protein, naturally decaffeinated coffee and edible vaccines. Biotechnology techniques can produce gene therapies and improve on techniques of forensics, among other things.

There's a growing need in the employment market for baccalaureate-prepared graduates in biotechnology and also a clear path to graduate school. Dan plans to weigh his options as he completes his studies.

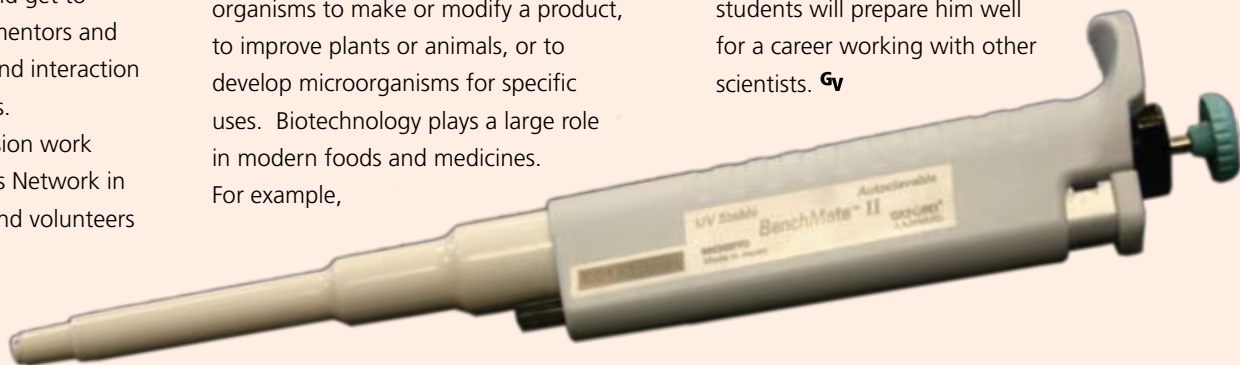
Clearly, Dan enjoys a good academic challenge. One of his favorite teachers was also his hardest. He took a college-level English class during his senior year of high school. "My teacher was excellent. I learned how to try and see things her way and tried to do things her way to



understand what I was learning. I also think that it's important to get good exercise and eat right to perform well academically."

Dan came to Grand View with an open mind, and he hasn't been disappointed. He likes

the professors and small class sizes. "You can get good discussions going in small classes." Learning from his fellow students will prepare him well for a career working with other scientists. **GV**





1 Les Nelson '86 baseball Athletic Hall of Fame for inductee. *
 2 Shelley (Delger) Bougher '97 basketball Athletic Hall of Fame inductee. * 3 Nicholas Wylie '04 Young Alumni Award winner. *
 4 Steve Bobenhouse '69 and Nancy Lavender Bobenhouse '78 Sally Cartwright Volunteer Service Award winners. * 5 James Ross '85 Distinguished Alumni Award winner. * 6 Kids enjoying the bouncehouses. * 7 Viking 5k. * 8 Class of 1959 at the President's Club Dinner. * 9 GV students enjoy the aebleskive experience. * 10 Katch 22 performing in the Leisure Garden. * 11 Dr. Kathy Peterson and Dr. Idit Hazan present during the Alumni College. * 12 Homecoming picnic and festivities. * 13 Viking Ride car show participant. * 14 Face painting. * 15 Picnic lunch. * 16 First annual Viking Kid Trot.

homecoming studenterfest homecoming studenterfest

2009

homecoming studenterfest

fall sports shorts

Cross Country: Men

- Placed fourth at Mount Mercy Mustang Gallop.
- Led this season by senior Bichok Deng who has had several top 20 finishes.

Cross Country: Women

- Led by sophomore Obsie Birru who won the William Penn Invitational and the Grand View Invitational. Birru was second at both the Roy Griak Invitational and the Iowa Intercollegiate Meet competing against NCAA Div I runners.
- Birru set new school record at Graceland Yellowjacket Classic with time of 17:53.
- Birru named MCC Runner of the Week six times.

Football

- 6-2 overall and 4-0 in MSFA at press time.

- Played NCAA Div I Drake University on September 5.
- Program received its first-ever national ranking as the No. 25 team in the NAIA on October 19.

Golf: Men

- Ranked as No. 1 team in nation in GolfStat ratings.
- Won Grand View Viking Classic, Lindenwood Fall Invitational, and placed third at NAIA Preview. Nine of the 16 teams at the NAIA Preview were ranked inside the top 25 in the NAIA.

- Josh Manske was medalist at Lindenwood Fall Invitational, third at NAIA Preview.
- Manske named MCC Golfer of the Week for performance at NAIA Preview.



Golf: Women

- Team finished third at Peaks Classic in La Veta, Colorado, among nationally rated competition, second at Grand View Viking Classic, and third at the NAIA Preview Invitational.
- Freshman Amalia Mejia finished second at Viterbo Invitational and fifth at NAIA Preview. Her runner-up finish was highest finish for female golfer in program history.

Soccer: Men

- Received votes in national ratings for several weeks.
- Trevor Cushman, Darren Martin, and Armin Mujdzic earned MCC Men's Soccer Player of the Week honors.
- Vikings finished second in MCC regular season and were No. 3 seed in MCC Tournament.

Soccer: Women

- Opened season with trip to Oregon for exhibition game against Corban and season opener against last year's

PLUMMER NAMED MCC ATHLETIC DIRECTOR OF THE YEAR

BY MOLLY BROWN, SPORTS INFORMATION DIRECTOR

In July, Grand View University Athletic Director Troy Plummer was selected by his peers as the 2008-09 Midwest Collegiate Conference Athletic Director of the Year.

Plummer was instrumental in the addition of Grand View's football and wrestling programs last year. The institution experienced record overall and freshman enrollment, and the athletic department set a fundraising record.

Additions to the athletic department included athletic offices, an athlete-only strength and conditioning room, a wrestling practice room, an addition to the

athletic training room, and new laundry facilities. Renovations to Williams Stadium, the home of Viking football and track and field, included a new locker room, artificial turf, and the track upgrades, giving Grand View the ability to host college events.

Sisam Arena and the Charles S. Johnson Wellness Center both received new paint schemes, wall pads, and floor resurfacing. Volleyball, basketball, and wrestling programs benefited from new score tables and chairs embossed with the



Grand View logo.

The athletic department added staff members, including its first full-time athletic trainer, strength and conditioning coordinator, and athletic success coordinator.

MCC Commissioner Rick Sanders said, "Troy's recognition by his peers is a credit to his efforts on behalf of Grand View as well as his leadership within the MCC."

Grand View claimed six conference championships and had three Coaches of the Year in 2008-09. **GV**

- national runner-up Concordia (OR).
- Competed against NCAA Div I Western Illinois.
- Finished third in MCC regular season standing with 4-2-2 record.
- Freshman goalkeeper Katie Zenz was MCC Player of the Week.

Volleyball

- At press time, Vikings were 6-1 in the MCC for second place in the regular season.
- Libero Amber Boevers, outside hitter Devon Jensen, and setter Ashtyn Neill named MCC Players of the Week.
- Jensen selected to All-Tournament Team at University of Sioux Falls, Graceland and Olivet Nazarene Tournaments. **Gv**

At right: Freshman outside hitter Devon Jensen, Underwood, Iowa, ranks number one in the NAIA in total kills with 515. photo TAYLOR HINKLE

Opposite page: Senior Titus Bland, Baytown, Texas, is ranked in eight categories nationally including second in interceptions with five and fourth in kick off return yards per attempt with 31.5. photo KENT OPDAHL



Renovation to the football field at Williams Stadium was completed over the summer with a new FieldTurf Prestige XM surface. photo GARY WELLS

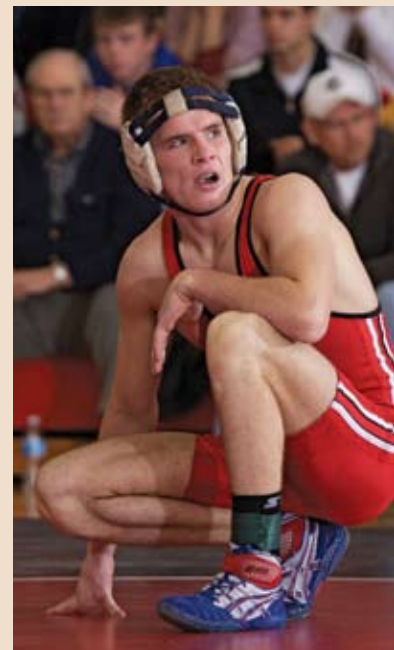
WRESTLING RANKED 5TH IN PRESEASON

BY MOLLY BROWN,
SPORTS INFORMATION DIRECTOR

The Grand View wrestling program was ranked No. 5 in the nation in the Preseason NAIA Wrestling Coaches' Top 20 Poll. Six Grand View wrestlers are ranked in the top 12 in their weight class.

Senior Matt Burns (Urbandale, Iowa) is the No. 1 wrestler at 149 lbs.

Burns was the NAIA National Champion at 149 lbs. in 2009. Sophomore Travis Evans (Ankeny, Iowa) is sixth at 133 lbs., junior Brad Lower (Burlington, Iowa) is fifth at 165 lbs., junior Glenn Rhees (Atascadero, Calif.) is fourth at 174 lbs., sophomore Adam Houser (Mason City, Iowa) is tenth at 174 lbs., and sophomore Justin Rau (Council Bluffs, Iowa) is second at 197 lbs.



Matt Burns, is ranked No. 1 in the Preseason NAIA Wrestling Coaches' Top 20 Poll. He was the NAIA National Champion at 149 lbs. in 2009. photo KEVIN SANDERS '08

Last season, in their first year of competition, the Vikings finished as the No. 8 team in the NAIA, produced three all-Americans, and the school's first-ever national champion.

Grand View kicked off its season Saturday, November 7. **Gv**

1952

NANCY SORENSEN '52 resides in Windham, Maine.

1959

RICHARD (DICK) KLEIN '59 founded Rainbow Trainers, Inc., which provides a program for children with disabilities to discover how to ride a conventional bicycle without training wheels. The program has been ongoing for 10 years and conducts dozens of camps, helping nearly 2,000 children this year. Richard and his wife, Marjorie, reside in Brentwood, Mo.

1961

WILLIAM C. JACOBSON '61 resides in Cedar Rapids, Iowa, and authored I Am Where I Am, Incomplete, the follow up book to We Are What We Were When.



1962

RICHARD JENSEN '62 has been making wine for family and friends since retiring in 2002. His 2007 Syrah received high

ratings at local wineries. Jensen resides in Solvang, Calif.

1963

RALPH SPEER '63, who resides in Nampa, Idaho, was elected in 2008 to serve a four-year term of service as Far West Regent for Sigma Tau Delta, the international honor society for English majors, and will represent colleges and universities in eleven states.

1966



GEORGE LIEPA '66 received the 2009 American Oil Chemists' Society Award of Merit at the 100th AOCS Annual Meeting and

Expo in Orlando, Fla.

1969

MATTHEW MCDOWELL '69 retired after 29 years with GlaxoSmith Kline Pharmaceuticals as a senior sales executive in Houston, Texas. McDowell resides near Sealy, Texas, with his wife, Kathy, and he is a member of the

American Quarter Horse Association and the Texas and Southwest Cattle Raisers Association.

1973

THERESA C. BRAUNE '73 resides in Ames, Iowa, and is a first grade teacher for Ames Community Schools. She received the Favorite Teacher Award from ABC Channel 5 Des Moines in May.

1978

STEVEN HELMICK '78 completed a master's program in counseling and is currently writing fiction while residing in Helena, Mont.

1983




JERRY J. JENKINS JR. '83 is a Farmers Insurance agent and was inducted into the Farmer's "Topper Club" and invited to attend the 2009 annual meeting of Farmers Insurance top sales producers.

GRAND VIEW ALUMNI EVENTS: WINE TASTING AND TOUR

Thursday, September 10, 43 alumni and friends gathered at White Oak Vineyards in Cambridge, Iowa, for an exclusive wine tasting and tour.

After finding their favorite vintage, alumni received a special 10% discount on their purchases. The White Oak Vineyard wine tasting and tour is just one of many Grand View alumni events held annually.

For more information about upcoming alumni events, contact Heather Iburg at 515-263-2957 or hiburg@grandview.edu. 



1987

MICHELLE (WIMMER '87) SANDERS is a pet nutrition specialist and sales representative for Nutro Pet Foods/ Products and received an award from the Iowa Workforce Development Center. She and her husband, Charles, reside in Mason City, Iowa.

1998

BRAD BOWERMAN '98 resides in Fort Worth, Texas, and is a firefighter/ paramedic for the Dallas Fire and Rescue Department.

1999

AMY (YEAGER '99) HEITZ is a senior graphic designer for Rock Communications in Newton, Iowa. She and her husband reside in Ankeny, Iowa, with their two children.

2000

NICHOLE LOZANO '00 received her elementary education degree from Grand View in December 2008. She is currently teaching sixth grade in Bondurant, Iowa.

She and her husband, Jason, reside in Altoona, Iowa, with their two children, Kaeden and Elizabeth.

2001

MELANIE (SMITH '01) PAREDES resides in National City, Calif., and was promoted to Lieutenant Commander for the United States Public Health Center where she served as Senior Nursing Officer assigned to the Federal Bureau of Prisons in San Diego, Calif.

DAVID SHARKEY '01 graduated with his master's of education in July from Viterbo University. He and his wife, **MELISSA (ZINGALE '01) SHARKEY**, reside in Pella, Iowa, with their daughter. David is a fourth grade teacher and dean of students at Windsor Elementary School in Des Moines and Melissa is the assistant director of residence life at Central College in Pella.

2002

ANGELA (BOLIO '02) BLONDOWSKI is a Sr. Administrative Assistant at Aviva in Des Moines.

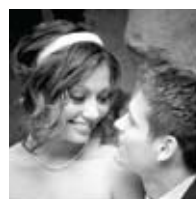
APRIL (BLOCK '02) LAFFERTY is a medical social worker for Iowa Home Health Care in Des Moines, Iowa. She and her family moved back to Iowa from South Dakota where she worked as a social worker for Hospice of the Northern Hills.

2003

BRADLEY D. BACH '03 is employed by Principal Financial Group as a financial advisor.

2004

SASA BORCIC '04 married **JAIME FAYE ALAVI '06** May 1 at the Blank Park Zoo in



Des Moines, Iowa; the couple honeymooned in Jamaica. Sasa is working on his master's in public administration from Drake University

and Jaime received her master's in public administration from Drake last year. Jaime will start law school this fall at Valparaiso University School of Law in Indiana.



From left: Forty-three alumni gathered for the wine tasting at White Oak Vineyards in Cambridge, Iowa, September 10; Alumni also received a tour of the facilities.

Photos: HEATHER IBURG '03

Who is Christ for us?

Grand View Choir
Dr. Kathryn Duffy, Director

Instrumental Ensemble
Mr. Richard Thimmesch, Director

Sunday December 6, 2009
Luther Memorial Church
1201 Grandview Ave.
4:00 p.m. and 7:00 p.m.
Admission free with ticket.

Grand View University

For tickets and more information call 515-263-2991

5:30 p.m. - Reception and Danish Christmas Festivities
Historic Hall Humphrey Center
1200 Grand View Ave.
Hosted by President and Mrs. Kent Henning

Tulefest²⁰⁰⁹

AUTUMN JONES '04 married Mike Luce



July 18 in Des Moines, Iowa. Grand View alumni in the wedding party included **APRIL (JONES '02) HAMILTON, LAURA (LUCE '04)**

STEWART, AMANDA MULLIN '04, COURTNEY (GLENN '04) AND TYLER TOMPKINS '03. Autumn is a transfer admissions counselor at Grand View. The couple resides in Des Moines.

2005

FOR INFORMATION ON **HEATHER HAALAND '05**, SEE THE 2008 NEWS.

2006

FOR INFORMATION ON **JAIME FAYE ALAVI '06**, SEE THE 2004 NEWS.

ARIEL S. PLEVA '06 graduated from Des Moines University with a master's degree in public health in 2008. She was accepted at Iowa State University College of Veterinary Medicine and started classes this fall.

2007

KRISTA BARNES '07 graduated from Des Moines University in May and received a Master of Science in physician assistant studies.

2008

NOAH JUDSON '08 completed a year of service with the Lutheran Volunteer Corps working with Health Care for the Homeless in downtown Baltimore, Md.



ROB OXENFORD '08 married **HEATHER HAALAND '05** June 6. Rob is a Marketing Consultant and Heather is a Graphic Designer and lecturer in art at Grand View. The couple resides in Ankeny, Iowa.



ASHLEIGH R. STEIL '08 is a police officer for the Cedar Rapids Police Department and resides in North Liberty, Iowa.

2009

ROXANA E. CHAVARRIA '09 resides in Des Moines, Iowa, and is an in-home counselor for Children and Families of Iowa.

Future Vikings

Dustin and **KRISTY (SHAEFFER '02) LITWILER**, a daughter, Kalyn Marie, born September 10, weighed 8 lbs 4 oz and was 21 ¾ inches long. She joins big brother, Darin. Kristy is the assistant controller at Grand View.



Nick and **KATIE (BIRCH '05) KINTZLE**, a daughter, Olivia Grace, born March 11. The family lives in Omaha, Neb.

LAURA (COYLE '06) AND BRET RENSHAW '06, a son, Colton Garner,



born October 9, weighed 7 lbs 2 oz and was 19 inches long. Laura and Bret are both registered nurses at Veteran's Affairs Medical Center in Des Moines, Iowa.

Thanks for helping make our Grand View education possible!

Interested in helping more GV students?

Give online: <http://giving.grandview.edu> or call 800-444-6083.

GVFund





Luke and **LACIE SIBLEY '07**, a son, Colbie Michael, born August 4, weighed 7 lbs 5 oz and was 21 ½ inches long. Lacie is a marketing specialist at Grand View.

In Memoriam

ELLEN MORTENSEN '44 passed away May 11 from a brain aneurism.

RICHARD E. TULLER '57 passed away from cancer.

CATHRYN NORRGARD '61 passed away May 9.

FRANKIE BRUNER, former professor of accounting and economics passed away

October 6. Bruner began work at Grand View in 1952. She lived in Tustin Ranch, Calif., at the time of her death.

REV. DR. KARL LANGROCK, former president of Grand View, passed away October 14. For more information, see page two.

JUDY PUOTINEN, wife of past Grand View President Art Puotinen, passed away September 30 after a four-year journey with pancreatic cancer. A memorial service was held on Sunday, October 11, at Bethlehem Lutheran Church in Elgin, Ill.

RODNEY WARREN, of Solvang, Calif., passed away June 14. He was a Grand View friend and supporter of the Farstrup-Mortensen Lecture Series.

*new job?
get married?
new baby?
special achievement?*

We want to know!

Fill out the form below and mail it in or go to www.grandview.edu, click on Alumni > GV Magazine Online to submit your information.

SEND US YOUR NEWS!

We encourage you to share the latest news in your life. Clip this form, attach additional sheets as necessary, and mail it to GV Magazine, Lacie Sibley, 1200 Grandview Avenue, Des Moines, Iowa 50316-1599. Or send e-mail to: lsibley@grandview.edu. Photos are welcome and will be used on a space-available basis. Deadline for the Fall issue is Friday, January 15, 2010.

Name _____ Last year at GV _____
 First Middle Maiden or name at graduation Last

Spouse _____ If alumnus/a, last year at GV _____
 First Middle Maiden or name at graduation Last

Address _____
 Street City State Zip

E-mail _____ Home phone _____

Please put a checkbox by the news you want to share.

New job Promotion Retirement Achievement

Business name _____ Your position or title _____

Other information _____

Marriage Date of marriage _____ Occupation Wife/Husband _____

Birth/Adoption Daughter Son Child's Name _____ Birthdate _____

Weight _____ Length _____ Siblings _____

Death Name _____

Date of passing _____ Last year at Grand View _____ Age _____

Survivor(s) If alumni, list names and the last years at Grand View _____

 Signature _____

Fall '09

MAKING GRAND VIEW BETTER

My role at Grand View affords me the opportunity to enjoy lots of reunions. The older I get, the more I seem to appreciate them. They take on all forms – from long lost friends reminiscing in Tyler, Minn., to recent graduates reconnecting with their favorite professors on campus. It's a great feeling knowing that Grand View played a key role in developing these life-long relationships.

Recently, members of the Class of 1959 returned for Homecoming/Studenterfest weekend. Back in 1957, these students arrived on campus from places like Solvang and Cedar Falls. But something wonderful happened during their two years on campus that transformed their lives and created memories of a lifetime.

Some of the '59ers had a chance to visit today's students in a classroom setting – students who are developing bonds that will last a lifetime. They saw quality faculty using the latest technology in first-class facilities.

They were proud, and indeed they should be proud. Grand View continues to positively impact students just like in 1959. Because of the loyal support of the alumni and friends on the following pages, Grand View is building new buildings, employing the best faculty and staff, and using the latest technologies.

In fifty years when the Class of 2009 returns to campus, they too will see new buildings and the latest in technology. They too will be proud knowing that, just like the generation before them, their gifts made a difference in the lives of those who follow.

On behalf of the students, faculty and staff, I thank you for your loyalty and continued support in making Grand View better.

Sincerely,



Bill Burma
Vice President for Advancement

CLASS OF 1933

Contributors
Karen A. (Lauritsen '33) Smith

CLASS OF 1937

Contributors
Karen M. (Thomsen '36) and
Carl '37 Kadgihn

CLASS OF 1939

Century Club
Arild E. '39 and Margaret
Nielsen
Ruth S. (Sorensen '39) and
Carl V. Petersen

CLASS OF 1940

President's Club
Delores (Holmgaard '40)
Jespersen
Marie (Sorensen '40) and
Kenneth J.* Kjolhede
Century Club
Alfred N. '40 and Cecelia
(Ibsen '38) Larsen
Contributors
Hertha M. (Lund '40) and
Arol C. Hansen
Ruth (Goodhope '40) Witebsky

CLASS OF 1941

Century Club
Victor E. '41 and Elaine H.
Buck
Sylvia F. (Frost '41) Fisher

Axel E. '41 and LouAnn
Thomsen
Contributors
Roy '41 and Marian
Ammentorp
Mayme M. (Andersen '41)
Holmberg

CLASS OF 1942

President's Club
Fylla S. (Petersen '42)
Kildegaard
Dean's Club
Ove R. Nielsen+ '42
Century Club
Edith M. (Krantz '42) Kilgren
Contributors
Marie (Miller '42) and Chris
Addison

Jean B. (Bray '42) Ward

CLASS OF 1943

NFS Grundtvig Society
Leila M. (Lauritzen '43)
Patchett
Century Club
Willard R.'40* and Arlene H.
(Holmes '43) Garred
Carma M. (Andreasen '43) and
Donald T. Hansen
Eileen L. (Lang '43) and
Harmon H. Smith
Contributors
Edith U. (Johansen '43) and
Norman Brakken
Elin K. (Jensen '43) and Robert
Miller
Victor Damgaard Nielsen '43

CLASS OF 1944

Contributors
Ida M. (Wolf '44) Decker

CLASS OF 1945

NFS Grundtvig Society
Contributors
Ellen Utoft (Bollesen '45) Juhl
Lillian L. (Feddersen '45)
Barnard
Evelyn M. (Lerager '45)
Chartier
Lillian Siegh '45

CLASS OF 1946

NFS Grundtvig Society
Valborg (Jessen '46) Nielsen
Esther Marie (Jensen '46)
Rossman

GIVING CLUB KEY

President's Club, \$1,000 and above ■ Dean's Club, \$500-\$999 ■ NFS Grundtvig Society, \$250-\$499 ■ Century Club, \$100-\$249 ■ Contributors, \$1-\$99
+ Indicates ongoing gifts from estates of deceased donors or from individuals who died during the fiscal year. * Indicates deceased.

Contributors

Mildred E. (Pagard '46)
Blomquist
Mary O. (Olsen '46) Riber

CLASS OF 1947

President's Club

Alice C. (Olsen '47) Humphrey
Gretchen (Krogh '47) Sorensen

NFS Grundtvig Society

Herluf M. '47 and Dortha M.
(Lund '47) Jensen
Ellen M. (Jensen '47) Nielsen
Elsie Marie (Molby '47) and
George M. '48* Norman

Century Club

Frank E. '47 and Edith E.
Christensen
Karen (Torp '47) and Everett
Cooper
Iver L. '47 and Lis T. Jorgensen
Marilynn (Nelson '47) and
Eugene Paulson
Theodore J. Thuesen '47

Contributors

Thorvald '46 and Johanne
(Johansen '47) Hansen
Paul S. '47 and Joann
Jorgensen
Elin M. (Jensen '47) and Svend
Koch
Alma M. (Jensen '47) and
Richard R. Schneider
Selma K. (Kildegaard '47)
Sloth
Helen (Hede '47) Thoen

CLASS OF 1948

President's Club

Virgil E. '48 and Boots
(Rix '46) Christensen
Glenn E. '48 and Rosemary
Krantz

Donald S. '48 and Alice
Petersen

Dean's Club

Gloria (Mortensen '48) Steberl
Verner '48 and Elaine Ruth
(Christiansen '48) Jensen

NFS Grundtvig Society

Lloyd H. '48 and Margery
Boilesen

Century Club

Ruth S. Connett '48
Natalie A. (Ness '48) Juhl
Alice (Norberg '48) and
Howard Nichols
Edwin '48 and Donna
Pedersen
Elsie (Rasmussen '48) Sorensen

Contributors

Peder E. '48 and Wanda Buck
Dorothy (Woodruff '48) and
A. N. Da Shiell
Barbara Handrup '48
Alice E. (Ammentorp '48)
Jorgensen
Vera B. (Britton '48) Kendall
Evelyn M. (Frost '48) Petersen
Robert J. Wallace '48

CLASS OF 1949

President's Club

Rev. "Gus"* '49 and Eunice J.
(Hermansen '50*) Knudsen
Earl W. '49 and Jean Louise
Sutton

NFS Grundtvig Society

William W. '49 and Beverly
Nielsen

Century Club

O.V. (Al) '49 and Eileen Nielsen
Earle S. Swanson '49

Contributors

Paul E. '49 and Shirley A.
(Svendsen '49) Christiansen
Marie K. (Paulsen '49) and
Neil T. '49 Gribskov
Ruth E. Jacobsen '49

CLASS OF 1950

President's Club

Nancy M. (Petersen '50) and
Warren W. Rasmussen

Dean's Club

Leland C. '51 and Barbara
(Brandt '50) Jensen

Century Club

Elsa M. (Torp '50) and Barry
Spiegel

Contributors

Ottar S. '50 and Dolores
Andreasen
Janice L. (Jensen '50) Bradley
Lois '50 and Don Hartline
Glen T. Jensen '50
John F. '50 and Kathlyn A.
Rider
Gloria (Faught '50) and
Ove H. '50* Strandkov
Helen M. (Knudsen '50)
Wallace

CLASS OF 1951

President's Club

Phillip D. '51 and Peggy Ehm
David L. '51 and Arlene F. '71
Sisam

NFS Grundtvig Society

Robert L. '50 and Karma Jean
(Jorgensen '51) Nilsen

Agnes E. (Ravenholt '51)
Nussle

Astrid Ravenholt '51

Century Club

Grace (Hansen '51) and Robert
Hemstreet

Raymond C. '51 and Alma
(Grumstrup '51) Johnson

John E. '51 and Virginia
(Ammentorp '51) Nielsen

Contributors

Justin L. '51 and LaVonne
Beeson
Ellen M. (Rasmussen '51) and
Edward C. Gillett
Donald T. '51 and Musa
Stielow
David P. '51 and M. Arlene
Waterman

CLASS OF 1952

President's Club

Anonymous
Robert D. '52 and Juanita
Jacobsen

NFS Grundtvig Society

Gerald H. '52 and Evelyn M.
Brandt

Century Club

Ernest W. Nielsen '52

Contributors

Dorothy M. (Miller '52) and
Frank Beck
Mary E. (Larsen '52) and
John S. Clark
Donald L. '52 and Mary L.
Clausen
Greta S. (Strandholt '52) and
John C. Dawson
Harriet K. (Holm '52) Hansen
Solveig (Egede '52) and Robert
Hedlund
Clela M. (Philleo '52) Hoggatt
Nancy A. (Sorensen '52) and
Robert Maloy
Duane A. '52 and Barbara L.
Nielsen
Sonja A. (Strandskov '52)
Richardson

CLASS OF 1953

President's Club

Richard N. '53 and Rita A.
(Pedersen '52) Juhl
Richard G. '53 and Marilyn O.
(Hansen '54) Kramme
Gilbert A. '53 and Suzy Nelsen

Dean's Club

Dennis H. '53 and Sandra L.
Andersen

Century Club

Edward S. Esbeck '53
Ruth Helen (Farstrup '53) and
Stanley Longman

Contributors

June M. (Jurgens '53) and
Alton C. Due
Edith Hansen '53
Solveig (Hansen '53) and Dale
Harlan
Frances R. McCorkle '53
Laura M. Roberts '53
John '53 and Anita Varne
Henry N. Wilcots '53

CLASS OF 1954

President's Club

Ethel (Kjaer '54) and Ed Barker
Elaine J. (Nelson '54) and
Louis P. '54 Bredesky
Egon K. '54 and Shirley
Ellgaard

NFS Grundtvig Society

Curtis D. Jacobsen '54
Lowell B. '54 and Marilyn
Kramme K.D.

Century Club

Arlan T. '54 and Carol
Andersen
Carol (Thuesen '54) and
Gordon De Young
Dennis '53 and Donna M.
(Andersen '54) Koch

Don C. '54 and Barbara Olsen

Contributors

Lila Larson '54
Gerald D. '54 and Eleanor
Schaudt

CLASS OF 1955

President's Club

Nelda '55 and Dick Sampel

Dean's Club

Bobbie M. (Sondergaard '55)
Jensen

Century Club

Patricia L. (Nyhus '55) and Max
Grassfield

Carl C. Hansen '55

Contributors

Carol E. (Petersen '55)
Christiansen
Jan O. (Omving '55) and Harry
Gawith
Darylne A. (Andersen '55) and
Donald Johnson

CLASS OF 1956

President's Club

N. James '56 and Edna Dam
Tom '56 and Evelyn Fisher

Century Club

Karen (Strandskov '56) and
Tony Bell

John A. Farrer '56

Ardyce Henriksen '56

Larry R. '56 and Gisela
Severid

Tom '56 and Mary Sheldahl

Sylvia Mae (Larsen '56) and

Robert Timmler

Contributors

Orlan J. '56 and I-Fang Lee
Branjord

Daniel F. '56 and Jean B.
Martensen

CLASS OF 1957

President's Club

John E. '57 and Joan Cisna

Richard N. '57 and Glenda

(Pickett '57) Jessen

Sonja Knudsen '57

Sandra K. (Jensen '57)
Rasmussen

Richard M. '57 and Karen R.
(Sorensen '57) Simpson

NFS Grundtvig Society

Sheila Hainlin '57

David P. '57 and Patricia L.
Jorgensen

Century Club

Richard N. Downs '57
Eileen M. (Zehngraff '57) and
Thomas A. Goodoien

Ronald P. '57 and Melvie

Maigaard

Carolyn J. (Grow '57) and

Sung Moon

Contributors

Harry T. Fisher '57
Richard M. '57 and Sally Fust

Richard L. Harter '57

William R. '57 and Virginia

(Anderson '52) Jacobsen

Richard F. Kern '57

Sybil M. (Duus '57) and James

Needham

Carol T. (Thygesen '57) and

Gary H. Osborn

Elvin Eugene Pender '57

Margot (Christiansen '57) and

Edmund G. Russell Jr.

Karolyn (Johnson '57) and

Mehdi Samman

Larry '57 and Susan J. Scarpino

CLASS OF 1958

President's Club

Virgil B. Elings '58
Edward T. '58 and Marjery M.
(Kraft '59) Fjelde

Janet M. Jensen '58

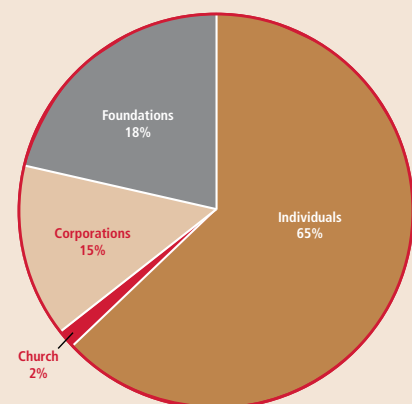
Robert L. '58 and Joanne

Mahaffey

Mark S. '58 and Lorna K.

(Fisher '61) Nussle

Fiscal Year 2008-09 Contributions \$3.28 million



Dean's Club

Hans J. Clausen '58
David V. '58 and Jeanne D.
(Swendsen '58) Nielsen
NFS Grundtvig Society
Jerry W. '58 and Carole Hall
Century Club
Phyllis R. (Raymond '58) and
Richard H. Berge
Sally D. (Buford '58) and
Robert Buford Shirley
Donald A. '58 and Ann L.
Holm
Niel R. Petersen '58
R. N. '58 and Marje Turnquist
Marsha J. (Parrott '58) and H.
Wayne Wheeldon

Contributors

Barbara J. (Sorem '58) and
Duane R. Brodie
Karl A. '58 and Sharleen
Eggers
David R. '58 and Shirley Haner
Doris J. (Steffenson '58)
Harrington
Jean (Cianciaruso '58) and
Richard Heger
Virgil C. '58 and Janice
Jacobsen
Fred '58 and Suzanne W. Klein
J. Arthur '58 and Jean Longo
Patricia K. (Myers '58) and
Leland A. Love
Edwin L. '58 and Sharon K.
Mohler
Eva M. '58 and Terence J.
Nelson
Gerald R. Schartner '58

CLASS OF 1959

President's Club

William E. '58 and Marilyn L.
(Andersen '59) Gift
Donald L. '59 and Sue Ann
Hansen
Wayne Hart Madsen '59
Leland E. '59 and Virginia K.
Molgaard
Donald L. '59 and Martha
Newell

Dean's Club

Ivan G. '59 and Sheryl L. Kerr
Century Club
J. Gail (Longerbone '59) and
Harold Durscher
Lois J. (Madsen '59) and
Lowell A. Lueck
Harald N. '55 and Carol A.
(Beyer '59) Sorensen

Contributors

Kathrine I. (Nyboe '59) and
Richard D. Christensen
Arne '59 and Sunny
Christiansen
Janet P. (White '59) and Larry
J. Clark
Barbara L. (Oates '59) and Jim
Cutright
Mark A. '59 and Kalley G.
Johnson
Elaine C. Lundquist '59
Carol L. '59 and Richard J.
Shannon

CLASS OF 1960

President's Club

Daniel P. '60 and Alice V.
(Olsen '60) Mikel

Dean's Club

Lou '61 and Judy (Denning
'60) Yacinich

NFS Grundtvig Society

Margaret (Madsen '59) and
Vernon A. '60 Johnson
Joy M. Ibsen '60 and Don
Lenef

Century Club

Phillip Brinkman '60
Sandra J. Ellgaard '60
William W. '60 and Janell
Hunnell
Erling J. '60 and Sue F. Pohls

Contributors

Larry B. Christensen '60
Kathrine A. (Madsen '60) Clark
Stephen W. '60 and Mary
Davis
Sam F. '60 and Judy Pugh
Esther L. VanGorp Beimers '60

CLASS OF 1961

President's Club

Solveig E. (Petersen '61) and
Larry Gregory
Ralph J. '61 and Lou Ann
(Rasmussen '61) Jensen

NFS Grundtvig Society

Ralph D. '61 and Mary Jo
Andersen
Joseph E. '61 and Jennie V.
Clay

Gordon F. '61 and Lois
(Knudsen '61) Lund

Century Club

Janis M. (Madison '61) and
Jack D. Pearl
John A. '61 and Muriel
Ridgway
Gary T. '61 and Patsy A. Vande
Venter
Cathryn (Jensen '61) Wrigley

Contributors

Dennis E. Goetsch '61
Jean M. (Richman '61) and
Donald Larson
Edgar L. '61 and Sharyl L.
Smith
Nancy L. Wright '61

CLASS OF 1962

President's Club

Sonja H. (Hansen '62) Walker
Century Club

David L. Bradbury '62
Robert E. '62 and Delaine
Glasco

Contributors

Jerry '62 and Pat Addy
Rita J. (Ibsen '62) Buch
Frederick V. '62 and Jan E.
Carson
Edward Bell Dixon '62
Ann (Lindblom '62) Arthur
Rudy G. '62 and L. Jean Roe
Donna D. (Jespersen '62) and
Gary D. Simmer

CLASS OF 1963

President's Club

Monroe J. '63 and Frances V.
Colston

Larry D. '63 and Lori G.
Hartsook

Century Club

Richard D. Finney '63
Gary L. Hansen '63
Judy L. (Bennett '63) and
Thomas Leffler
Glenn L. '63 and Bev Smith
Ralph H. Speer '63

Contributors

Albert A. '63 and Susan
Bodaski Jr.
Leola M. (Vorhies '63) and
Jerry W. Bradley
Craig C. '63 and Barbara J.
Campbell
Russell W. Fisher '63
Verle E. '63 and Helen Guthrie
Gene '63 and Barb Kooker
Homer L. '63 and J. E. Neeman
Richard L. '63 and Eleanor
K. Rose
Randy H. '63 and Nancy A.
(Swihart '63) Ross
Larry T. '63 and Erika R.
Thorson

CLASS OF 1964

President's Club

Arlen R. '64 and Asta
(Petersen '65) Twedt

NFS Grundtvig Society

Ronald W. '64 and Donna
Mohr

Century Club

Roger D. '64 and Linda Brooks
Frank '64 and Joyce Kaiser III

Contributors

Janne (Wheaton '64) and
Ronald L. Backus
Kenny L. Boatwright '64
Carole D. (Beckman '64) Boon
Kathleen B. (Freeman '64) and
Byron Church
Marvin H. '64 and Dorothy
K. Crim
Lana K. (Kjergaard '64) and
Ronald R. Fossell
Erik S. Hansen '64
Helen and Rudy '64 Jensen
Russell G. Lull '64
Glen H. '64 and Karen G.
(Cooper '65) Madsen
Inez E. (Busse '64) and
Bruce S. Norgard

CLASS OF 1965

President's Club

Josiah M. Conkling '65
Century Club

Michael L. '65 and
Catherine A. Campbell
Laura E. (Garred '65) and
William J. Hemmes
Janice L. (De Vault '65) and
Bradford L. Santos
Hubert J. '65 and Peggy A.
Vestestad

Contributors

Neil H. '65 and Diane M.
Andersen
Gary Russell Fierce '65
Willard G. '65 and Rebecca
Masters
Christopher H. Miller '65
Nancy G. Moon '65
Sandra Kay (Pedersen '65) and
Duane Morbitzer
Rikke H. (Hansen '65) and
Steven A. Olsen
Claudia V. (Voigt '65) and
Paul C. Olson
Eileen Marie (Olsen '65) and
Julian E. Ronning
Virde E. VonQualen '65
David H. '65 and Elaine
Wilkinson

CLASS OF 1966

President's Club

John C. '66 and Colleen
Burgeson
Edward E. '66 and Suzette G.
(Stephens '66) Jensen

Dean's Club

Michael Kramme '66

NFS Grundtvig Society

Robert E. '66 and Sharon
Chittenden

Century Club

Ronald E. '66 and Nancy Hays
Norma R. (Christiansen '66)
Horswell

Jeri L. (Krouse '66) and
Ronald L. '66 Mellgren

Contributors

Sidney J. Alber '66
Gary C. Battles '66
Jerry H. Hassel '66
George U. '66 and Candice
Liepa
Vicki L. (Pederson '66) and
Dennis Porter
Christine M. (Larson '66) and
Gary W. Reynolds
Linda L. (Lozano '66) and Jerry
Skeers
Camille E. (Larson '66) and
M. Alan '65 Snedden
Harold A. '66 and Sherry
Swihart
Paul N. '67 and Fonda M.
Womack

CLASS OF 1967

President's Club

Bill '67 and Linda Weidmaier

Dean's Club

Betty A. (Witzel '67) and
Michael Dall

Century Club

Kim N. '67 and Jaci Hansen

Contributors

Karen E. (Barnhill '67) and
Larry Ahlman
Fred L. '66 and Mary A.
(Low '67) Baedke
John H. Crabb '67
Joan V. (Ellsberry '67) and
Dennis Dietz

Vicki L. (Hougham '67) and
Gary McKibbin
Robert L. '67 and Lynn
Neswold
Gary W. Nichols '67
Karen L. (Mc Gahan '67) and
Larry R. Rainwater
Jane Ann (Peterson '67)
Wedman
James L. '67 and Elizabeth
"Betsie" A. (Gooch '67)
Wheeler
George K. '67 and Andrie
Young Jr.

CLASS OF 1968

Dean's Club

C. Fredrick '68 and Gerry '94
Fuller

NFS Grundtvig Society

David A. '68 and Myrtle M.
Howard

Trudy M. (Hurley '68) and
Joseph Hurley

Robert V. '68 and Gayle A.
Johnson

Craig P. '68 and Nancy J.
Redshaw

Century Club

Nick '68 and Faira K.
Knezevich Jr.

John D. '68 and Elaine R. Kouri
Pamela K. '68 and Stuart S.
Thorson

Contributors

Karen A. (Carlson '68) and
Richard Bason
Ralph W. Fogue '68
Bonnie J. (Sharp '68) and
Joseph Higgins
Michael E. '68 and Brenda J.
Johnson
William C. '68 and Cleoda M.
Mikesch
Michael D. Mullins '68
Michael C. '68 and Geraldine
Osweiler
Carol A. (Nielsen '75) and
John D. '68 Rudisill
Sharon L. (Stein '68) and Bill
VanCleave

CLASS OF 1969

President's Club

Steven F. '69 and Nancy
(Lavender '78) Bobenhouse

Wayne D. Jensen '69
Harold B. '69 and Anne
Wheeler

Dean's Club

Jeffrey L. '69 and Sherry
Simpson

NFS Grundtvig Society

Terry W. '69 and Beverly J.
Lantz

Century Club

Steven J. Barnett '69
Fredrick O. '69 and Janet K.
Holmberg

Contributors

Nancy J. (Sharp '69) and
Richard Bradwell

Marcia L. (Boal '69) and Mark I. Cohan
 Sid H. '69 and Rebecca Gimre
 Bruce C. '70 and Suzanne J. (Rockow '69) Hoegh
 Ruth C. (Iversen '69) Jackson
 David K. '69 and Sheila M. Lingwall
 Cookie A. (Blixt '69) Major
 George A. '69 and Patricia K. Patrick
 Dale L. Roberts '69
 John M. '68 and Shirley Rosebery
 Royce and Jean A. (Barnard '69) Schweizer
 Richard R. '69 and Joann Shepard
 Betty L. (Boat '69) and George C. Vogel

CLASS OF 1970

President's Club

C. Mike '70 and Karen J. (Sorensen '70) Brodie
 Carey G. '70 and Ann M. (Von Gillern '70) Jury

Century Club

Nancy J. (Pike '70) and Rick W. '69 Elliott

Contributors

Jerry L. '70 and Barbara Anderson
 Timothy R. '70 and Kathleen Harrington
 Wayne A. '70 and Helen K. Johnson
 Janice M. Molgaard '70
 Linda L. (Eaton '70) and Gary Mould
 Robert W. '70 and Sandra Spencer
 Michael '70 and Joan Voogd

CLASS OF 1971

President's Club

Paul C. Oksnee '71

Century Club

Shauna J. (Bishop '71) McLean
 Gary J. '71 and Suzanne Oeth

Contributors

David L. '71 and Sally A. Ashcraft
 Erika E. (Chandler '71) and Jim D. Curtis
 Mark J. '71 and Mary E. Durham
 John W. Harmon '71
 Diana J. Hatfield '71
 Douglas A. Jensen '71
 Loraine E. (Hunerdosse '71) and Roger Lawler
 Rebecca R. Richardson '71
 Larry R. Willis '71

CLASS OF 1972

Century Club

Konnie F. (Fiscel '72) and David F. Anderson
 Kathy M. (Sorensen '72) and Duncan H. Meldrum
 John V. '72 and Claudia K. (Hunter '73) Stensland

Pamela N. (Nizzi '72) and John E. Swenson
Contributors
 Tana L. (Oberwetter '72) and Gaylord Belgarde
 Ruth I. (Wassink '72) and Harold J. Gorter
 Larry E. '72 and Pamela K. Juhl
 Steven J. '72 and Susan D. McDonald
 Ann M. (Hochstetler '72) McKibbin
 Jo L. (Reynolds '72) Pierce
 Fred H. '72 and Theresa M. Redhead
 Kathryn S. (Webb '72) Wikert

CLASS OF 1973

Century Club

David D. '73 and Renee C. (Tiedge '72) Drake
 Rick L. '73 and Brenda Olson

Contributors

Miriam D. (Whitson '73) and Pat Alshouse
 Jean M. '73 and Fred Drew
 Lorraine C. (Carroll '73) and William Drews
 David G. Holmgren '73
 Gregory R. '73 and Karol D. Mauk

CLASS OF 1974

NFS Grundtvig Society

Kaylene L. and Paul D. '74 Ruby

Century Club

David E. '74 and Debra K. Beery
 Alan D. '74 and Renee K. Heberer
 Katherine L. (Channell '74) and Steven R. Justice

Contributors

Cheryl J. (Arnold '74) and Michael Giudicessi
 Julie Ann (Abrams '74) Hughes
 Janet K. (Mauk '74) and Ed Mount
 Mark '74 and Geraldine Padellford
 Thelma D. (Bebb '74) and Carl L. Roloff

CLASS OF 1975

President's Club

Eric T. '75 and Kathy Crowell

Dean's Club

Timothy E. '75 and Eva Pratt

NFS Grundtvig Society

Raymon E. '75 and Connie Darling

Century Club

James J. '75 and Joan M. Carlson

Gary '75 and Lynette Moden

Contributors

Victoria T. (Leto '75) DeFrancisco
 Brian D. Halferty '75
 Margaret A. (Kuhlman '75) and Kevin S. '77 Lambi
 Kevin J. Lynch '75

Michael P. '75 and Kathy McElree
 Joan K. (Welch '75) and Sharon K. Richardson '75
 Dennis R. '75 and Debra S. White

CLASS OF 1976

NFS Grundtvig Society

Diane L. (Gill '76) and Lee L. Doidge

Contributors

Mary L. '76 Bricker-Smith and Joseph E. Smith
 Joseph F. '76 and Annie K. Dols
 Peggy (Riggs '76) and Steve Job
 Jeanne M. (Larson '76) and J. Tim '73 Nichol
 Nancy Carol (Hansen '76) and Patrick O'Keefe
 Jeffrey M. Pauley '76
 David I. Wandling '76

CLASS OF 1977

President's Club

Mark P. '77 and Jennie Glowacki

Priscilla R. (Rossman '77) Schwartz

Century Club

Donald D. Morrill '77

Contributors

Craig L. Bartelt '77
 Deanna L. (Culver '77) and Cole T. Davis
 Lynne M. (Thompson '77) and Thomas D. '77 Hoehamer
 Karen (Nissy '77) Nielsen
 Marilyn K. '77 and R.M. Rowe
 Connie L. (Gregoire '77) and Wendell J. '66 Saunders
 Debey D. (Haag '77) and Greg Schwab
 Randy L. Stumbo '77
 Rose M. (Garred '77) Walter

CLASS OF 1978

Century Club

Marianne (Fischer '78) and Robert J. Saxton
 M. Dan Collins '78
 Mark D. Rouw '78

Contributors

Reggie E. '78 and Lisa Collette
 Jon M. '78 and Christine Coy
 Sandra L. Knudsen '78
 Calvin R. '78 and Michelle A. McKelvogue
 Kent D. '78 and Lindy Pearson
 Richard L. '78 and Karen Powell
 Debbie M. Vandehaar-Arens '78 and Daniel Arens

CLASS OF 1979

President's Club

Jo Ann L. (Vannatta '79) and Harold Reinboth

NFS Grundtvig Society

Lynnette J. McKay '79

Century Club

Gregory L. '79 and Mary E. Dockum

Marjorie A. (Reed '79) and Michael Rupert

Contributors

Patricia J. (Sullivan '79) and Darrell Cox
 Cynthia E. (Fredregill '79) and Stephen L. Florer
 Morris F. '79 and Lynne A. Murphy
 Craig R. '79 and Marilyn Newton
 Linda L. (Heithoff '79) and Marion A. Romitti
 Kristi K. (Pratt '79) and Allen Storbakken
 Cynthia S. (Queen '79) and Luie E. Weikum
 Barbara A. (Connor '79) and Glen Wells

CLASS OF 1980

Century Club

Judy A. (Juhl '80) and William H. Ellerman

Contributors

Susan K. (Thompson '80) and Bob Curry
 Rustin T. '80 and Mary Davenport
 Valerie G. P. (Peterson '80) and Randy L. Howard
 Robert W. Jewett '80
 Beth E. (Radloff '80) and Steve Matson
 Chris F. Minor '80
 Marcia S. Pitcock '80
 Janan L. Wunsch-Smith '80 and Zane Smith

CLASS OF 1981

NFS Grundtvig Society

Steven P. '81 and Dana Eck

Contributors

Mildred J. (Palladino '81) and Ubbo Agena
 Terry R. '81 and Becky Brennan
 Wesley L. Greenwood '81
 Jean L. McCrea '81
 Brenda S. (Massey '81) and Kevin Thompson
 Kelly L. '81 and David VanGorp
 Sharalyn J. Vogel '81

CLASS OF 1982

President's Club

Robert J. '82 and Amy Tursi

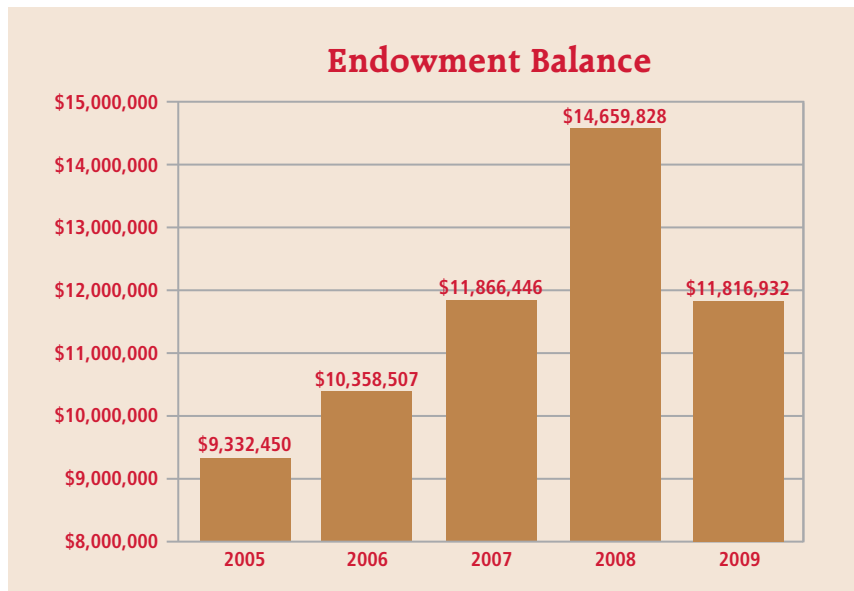
Century Club

Barry M. '82 and Susan Jones

Mary R. Quinn '82

Contributors

Brenda L. Hoshaw '82
 Raymond P. Kinley '82
 Susan E. (Fuhrman '82) Linde
 Ila Jean (Loughry '82) and Kendall L. Miller
 Timothy G. Neal '82



Charlinn O. (Knight '82) and Berry E. Reeves
 Mary E. Schemmel '82
 Bruce J. '82 and Kim Vanderpool
 Steven and Deborah A. (Schippers '82) Williams

CLASS OF 1983

Contributors

Mae Helen Bell '83
 Sheryl A. (Tunning '83) and Paul Clark
 Bernadette G. (Gioffredi '83) and Thomas R. Loken
 Elizabeth C. (Fath '83) and Thomas P. Morse
 Mitra Nademi-Nassari '83
 Mary L. (Staples '83) and Michael H. Said
 Mary Jo (Koets '83) and Chuck Schira
 Chuck F. Shockley '83
 Steven D. '83 and Judy Sisul
 Anne M. (Hoerster '83) and Leroy Timmerman
 Michelle K. (Bingham '83) and Robert Zappa

CLASS OF 1984

President's Club

Randy J. '84 and Jill Sackett

NFS Grundtvig Society

David J. Brown '84

Century Club

Julie B. (Walters '84) and Marty Bell
 Daryl '84 and Mary Frey
 Jeffrey N. Nichols '84
Contributors
 Bruce A. '84 and Sherri L. (Laurent '87) Babcock
 Becky L. (Andrews '84) and Jack E. Blackford
 Cheryl A. (Cummings '84) and Darwin Dahms
 Lynnette L. (Peters '84) and Kevin R. Moore
 Michael '84 and Christine Soener

CLASS OF 1985

President's Club

Eric J. '85 and Saffin Sams
 Mark T. '81 and Anne M. (Nielsen '85) West
NFS Grundtvig Society
 Lewis A. '85 and Kimberly A. (Hilliard '88) Yacinich

Century Club

Bruce W. '85 and Vickie L. (Lenihan '86) Clark
 David K. West '85
Contributors
 Joan V. Anderson '85
 Danette L. (Schoop '85) and Erich Beeson
 Viki L. Cameron '85
 Mary K. (Craig '85) and David R. Debolt II
 Cathy A. (Jorgensen '85) and Michael Gearhart

James E. '85 and Margaret G. Hallman
 Shari G. (Fischer '85) and Gary Harms
 Jeff A. Hoogensen '85
 Rodney E. '85 and Kathy Hutt
 Douglas M. Marlow '85
 Kevin J. Palmer '85
 Janet R. (Jessen '85) and Kevin Tracy

CLASS OF 1986

President's Club

Karen A. (Hoskins '86) Spahr
 Chad J. Wagener '86

NFS Grundtvig Society

Luanne J. Knudsen '86

Century Club

Jody L. Christiansen '86
 Richard D. '86 and Mary Hermann
 Michael R. '86 and Paula Gavin
 John H. '86 and Susanna J. (Shaw '88) Meeker
 Vance K. '86 and Rhonda Voss
Contributors
 Kevin J. '86 and Faye E. Akers
 Susan L. (Merrill '86) Casber
 Elizabeth H. Harvey '86
 Raymond M. '86 and Kim Roshek
 Roberta L. (Hammes '86) Royce
 Brent A. '86 and Stacey N. Warren
 Edward B. Wright '86

CLASS OF 1987

President's Club

Diana J. (Jacobs '87) and Philip O. Sickles

Century Club

Ruthann (Miller '87) and Paul S. Ruble
Contributors
 William B. Ayers '87
 Douglas J. '87 and Trudi J. (Spear '88) Bauer
 Karen M. (Lee '87) and Roger Fread
 Sarah M. Fredregill '87
 Donald P. '87 and Traci Shultice

CLASS OF 1988

NFS Grundtvig Society

Steve C. Snyder '88 and Sandra Deyoe
 Cynthia L. (Richards '88) and Matthew V. Fleagle

Century Club

Marla J. (Van Donselaar '88) and Gary De Jong

Contributors

Lisa C. (Jackson '88) and Timothy J. Bianco
 Lori Ann Haight '88
 Eric N. '88 and Andrea Meek
 Jimmie L. Morton '88
 Mary D. (Werger '88) and David Smith
 Mark R. '88 and Wendy M. Zeratsky

CLASS OF 1989

President's Club

Michelle W. (Wilkinson '89) Reynolds

NFS Grundtvig Society

Kristin J. (Caligiuri '89) and Thomas B. '89 Day
 Kristin L. (Howes '89) and Mike Schweiger
 Paul T. '89 and Connie Winget

Contributors

Karla R. (Hayes '89) and Bart Hayes-Hawk
 Julia A. (Estes '89) and Mike Morrissey
 Bradley W. '89 and Lisa Nelson
 Michael D. '89 and Suzanne Sheeder
 Michael J. Smith '89

CLASS OF 1990

Century Club

Leslie A. (Sufficool '90) and William D. Malcom
 Gary T. '90 and Kimberly Rinehart

Contributors

Anonymous
 Joseph G. '90 and Liawni L. Barbeln
 Bradley B. '90 and Janis L. Baumann
 David W. Broers '90
 Lisa A. (Coen '90) and Craig A. Canby
 Kayla J. (Gibson '90) and Jared G. Erickson
 Craig S. '90 and Renae Frank
 Gregory J. '90 and Marianne K. (Jensen '90) Kramer
 JoAnn (Helland '90) and William R. Moncrief
 Roland L. '90 and Michelle Simmons
 Scott A. Sondgeroth '90
 Margaret A. Wilcox '90

CLASS OF 1991

NFS Grundtvig Society

Daniel C. Cretors '91

Century Club

Carmella E. (Costanzo '91) and Jeffrey Hamre
 Jennifer M. (Parker '91) and Michael Olson
 Elizabeth M. (Eckert '91) and Shawn Preston
 Dot J. '91 Mattson-Reid and Blair Reid
 Brent W. '91 and Joy Zeigler
Contributors
 Cal R. '91 and Kim Alexander
 Judith A. (Maggie '91) and Larry Brown
 William B. Engelbrecht '91
 Michelle M. (George '91) and Dennis A. Fick
 Deanna M. (Bryant '91) and Jeffrey Gilbert
 Roger J. '91 and Halbur
 Miriam W. (Woods '91) and Larry Heuermann

Debra S. (Knoblough '91) and Francis J. Kelly
 Victoria L. (Anthony '91) and Paul Krebs
 Michael C. Masiello '91
 Janet M. '91 and Robert L. Pickerell
 Noreen C. (Eberline '91) and Dick Reding
 Robert J. '91 and Susan R. (Davenport '91) Soards
 Deanna R. (Kaufman '91) and John Stacy

CLASS OF 1992

Dean's Club

William A. '92 and Deb A. Yager

Century Club

Jeffery J. '92 and Andrea S. Corcoran
 Troy W. '92 and Karyn R. Leininger

Contributors

Lora A. (Stevenson '92) and Kenny Caves
 Judith J. (Mulder '92) Flanery
 Cheri D. (Ritchie '92) and Bryce Friesz
 Grant R. Ketel '92
 Andrea K. (Peek '92) and Michael D. Mitchell
 Tricia L. (Collins '92) and John Negrete
 Patricia S. Powers '92
 John M. '92 and Sherry L. Sharp
 Jeffrey D. '92 and Kathleen Skalicky
 Mike L. '92 and Beth Steven

CLASS OF 1993

NFS Grundtvig Society

Elizabeth A. (Stahl '93) and David Cox

Jennifer (Koehler '93) and John Schneberger

Contributors

Laura L. (Ziebell '93) Baumgartner
 Rhonda R. (Nance '93) and Jon Johnson
 Diane C. (Kropf '93) McFadden
 Allan J. ('93) and Rhonda Olney
 Alice C. Willis '93

CLASS OF 1994

NFS Grundtvig Society

Peter J. '94 and Kris Kiernan

Century Club

Tarita L. (Henry '94) and James A. Benzoni
 Kathryn G. (Gill '94) and Ronald J. Collins
 Lorene K. Mein '94
Contributors
 Jason F. '94 and Shelley L. (Johnson '95) Kunert
 Heather R. (Pearson '94) and Vickie L. (McKinley '94) and Dan Borich

Tracy M. Kennedy '94
 Roger A. '94 and Angela Watson
 Nicole M. Lester-Ekis '94 and Joe Ekis

CLASS OF 1995

President's Club

Diane K. Schaefer Johnson '95 and William J. Schaefer

NFS Grundtvig Society

Sara J. (Veren '95) and Randy G. Mc Morran

Contributors

Curt T. '95 and Christine R. Brown
 Trenton A. '95 and Amy Burd
 Melissa R. (Booth '95) and Chad D. '96 Buresh
 Brenda S. (Broderick '95) Decker
 Paul A. Koerselman '95
 Jodi E. (Sublett '95) and Patrick Marti
 Brian C. '95 and Tiffany J. Patterson
 Leslie L. (Lane '95) and Craig J. '96 Schneider
 Benjamin R. Stone IV '95
 Jane M. Tebbe '95

CLASS OF 1996

President's Club

Eric W. '96 and Kathy Krohn

Contributors

Timothy A. '96 and Jodi Carlson
 Sarah A. Doidge '96
 Joan C. (Ehlers '96) and Tim Johnson
 Patrick C. '96 and Teri E. (Watson '96) Kazeze
 Dale R. Neas '96
 Laurie A. Wirtz '96

CLASS OF 1997

NFS Grundtvig Society

Robert E. '97 and Patricia Kleba

Contributors

David B. Haddad '97
 Donald P. Richardson '97
 Dmitry A. Yarushkin '97

CLASS OF 1998

Century Club

Gordon P. ('98) and Jeannine Dunn

Neil T. '98 and Cynthia Olson

Rick E. '98 and Rachel Pederson

Jennifer C. Rawley '98

Contributors

Kirk J. Albin '98
 Christopher C. '98 and Amy M. Butler
 Molly L. (Herzberg '98) and Monte Garcia
 Kristin D. (Kasper '98) and Jeffrey D. '01 Jensen
 Susan R. (Good '98) and Jason Knollinger

Stacey A. (O'Brien '98) and Donovan Long

CLASS OF 1999

Dean's Club
Benjamin Marconi '99
Century Club
Lois R. (Jentz '99) and Ken Ahnholz
Victor N. '99 and Kate Anderson
Suzanne M. (Barnhouse '99) and Doug McKinstry
Kristie K. (Jensen '99) and Shawn Neddermeyer
Contributors
James A. Arthur '99
Lisa M. Crow '99
Cindy K. (Beatty '99) and Ross Peeler
Andrea J. Schaben '99
Christy L. Burke '99

CLASS OF 2000

President's Club
Kurt R. '00 and Kristi B. Bogseth
Dean's Club
Keith J. '00 and Charla Kudej
Lisa A. (Ludwig '00) and Michael A. '02 Hopkins
Century Club
Scott R. Coolong '00
Contributors
Kimberly K. (Phillips '00) Alton
Dorothy M. (Aikin '00) and Lysle Hitchcock
Gary M. '00 and Patsy Linnevold
Elizabeth M. '00 and Robert L. Schultz
Amy J. (Lowery '00) and Rich Walton

CLASS OF 2001

Century Club
John J. '01 and Susan Alshouse
Rebeka J. (Dunsbergen '01) and Ty Derry
Lauren E. (Riegler '01) and Jonathan Say
Contributors
Wendy M. (Lockhart '01) and Terry Anderson
Suzanne E. Ashour '01
Amy G. (Hill '01) and Douglas G. '01 Brinker
Jennifer L. (Petschauer '01) and Jason Carico
Kathleen J. (Propst '01) and Keith Gunzenhauser
Danny M. Haidar '01
Judy (Grau '01) and Peter Martin

CLASS OF 2002

President's Club
Timothy T. '02 and Joanna Lowe Jr.
Century Club
Eric E. Kober '02

Kristy L. (Shaeffer '02) Litwiler
Willie C. Sheldon '02
Contributors
Janis M. '02 and Mark Adams
David L. '02 and Karyl Behrens
Scott M. Herrig '02
Janis G. (Jurgensen '02) and Robert D. '62 Meek
Joni R. Moore '02
Rachal A. Morgan '02

CLASS OF 2003

President's Club
Scott D. '03 and Amber Prickett
NFS Grundtvig Society
Terri P. '03 and Alan Wolf
Century Club
Bradley D. Bach '03
Ryan G. Grother '03
Adnan Junuzovic '03
Contributors
Kerrie L. Chapman '03
Cynthia L. (Hohl '03) and Phillip DeMeyer
Mary A. Dowson '03
Karen S. (Carroll '03) Fatino
Jessica L. (Nikkel '03) and Brian Maston
Andrea L. Pedersen '03
Veronica L. (Powers '03) and Kerry White

CLASS OF 2004

Century Club
Benjamin L. Andrews '04
Barbara A. (Van Sloun '04) and Henry Burkard
Robin C. '04 and Michael Luke
Contributors
Charles R. Ball '04
Jeff L. Falkner '04
Melissa L. Gourley '04
Charlana F. '04 and Dan Gubbins
Patrick T. '04 and Christy Harmeyer
Emily A. Jamison '04
Dawn M. Mabe '04
Laura A. (Schnoir '04) and Jim Martin
Leigh A. (Dickson '04) Peterson
Bradley E. Reineke '04
Elizabeth A. (Durham '04) and Aaron Vande Voort

CLASS OF 2005

Contributors
Jan M. (Gardner '05) and Jerry Fitzsimons
Tracy K. Hollinger-Morgan '05
Judy M. Holzmer '05
Michael S. Hopson '05 and Melanie Parks
Gregory B. '69 and Betty A. '05 Jones
Zachary T. '05 and Jamie Letzring

CLASS OF 2006

Dean's Club
Julie and John F. '06 Bantz

Contributors

Jenifer A. (Busch '06) Griffin
Kathleen A. Hammond '06
Avraham A. '06 and Idit Hazan
Angie C. Laverty '06
Christina R. Middleswart '06

CLASS OF 2007

Contributors
Macar B. '07 and Ayak A. Akec
Abbie I. Andrews '07
Tara B. Bridgeman '07
Jeffrey C. Cam '07
Matthew S. '07 and Robin Cramer
Timothy G. '06 and Rhonda S. Davis
Kerri R. Earnest '07
Tonia R. (Adams '07) and Joel Kautz
Benjamin A. Meyer '07
Steve '07 and Angie Neville
Elizabeth B. Pessotto '07

CLASS OF 2008

Century Club
Brett A. '08 and Alexandra Bacon
Contributors
Mansur Abu-Assaf '08
Rochelle A. (Cameron '08) Carver
Sonya J. Collier '08
Todd A. '08 and Julie Folkerts
Lindsay N. Hammrich '08
Dale L. '08 and Lori Helgevold
Anthony D. Jackson '08
Geri E. '08 and Brent Jepson
Letitia K. Jaspersen '08
Brent M. Krizer '08
Brooke A. Lacina '08 and Kyle Wehrman
Laure Beth Nagle '08
Erica R. '08 and Jonathan Sloan
Carly J. Thompson '08

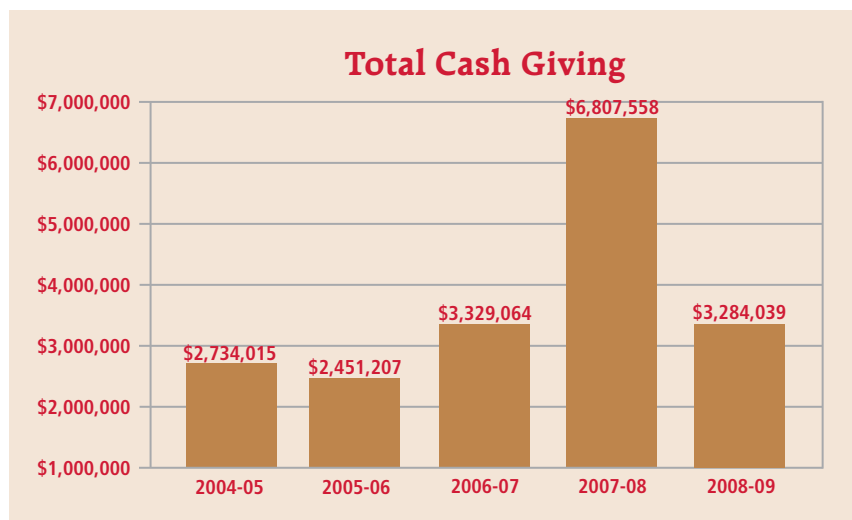
CLASS OF 2009

Century Club
Kacey J. Barrow '09
Contributors
Cameron and Chelsey A. '09 Aisenbrey
Danielle M. Ameling '09
Glenda Anderson '09
Rhiannon D. Bailey '09
Sarah Be '09
Nicole K. Bentler '09
Melissa L. Blood '09
Brandon J. Bond '09
Jadie L. Brock '09
Emily S. Brown '09
Jessica J. Claybrook '09
Kristen K. Crozier '09
Susan J. Didier '09
Traci L. Doland '09
Amy C. Erickson '09
Eric R. Gookin '09
Elizabeth L. Gorman '09
Troy C. Griffin '09
Sheryl D. Hanson '09
Sara F. John '09
Angela T. Johnston '09
Lacey L. Jondal '09
Boyd P. and Brach R. '09 Jones
Brienna K. Jordan '09
Danielle E. Kisner '09
Nancy C. Knox '09
Rachel A. Locke '09
Roberto C. Lopez '09
Benjamin J. Lovan '09
Mariya S. Lozovich '09
Linda M. Marovets '09
Ann M. McGonegle '09
Cheryl M. (Koepeke '09) Naylor
Christine Osborne '09
Chelsea L. Patterson '09
Ravyn B. Perry '09
Maria A. Phearman '09
Holly J. Poort '09
Kimberly A. Powers '09
Kayla L. Purdum '09
Kathleen A. Ryan '09
Rachel J. Seltz '09
Kyle A. Shaffer '09
Jacob E. Shoemaker '09
Hannah B. Tripp '09
Tristan H. Wicks '09

Lindsay K. Wiese '09
Adam Williams '09
Jaeda N. Young '09

FRIENDS

President's Club
Acme Printing
Leann M. Stefani-Anderlik* and Jeff Anderlik
Karen T. and David E. Anderson
Ankeny Aesthetic Dentistry
Anton Nielsen Trust
Aviva
Carol Bamford
Bank of America
Bankers Trust
Debbie and Terry Barger
Blake Barnes Insurance
Wendell W. Blankenburg
Scott D. and Melanie Bock
Bright Foundation
Marcia H. and Thomas A. Brown
William and Kristi Burma
Gregory J. and Stephanie Burrows
Capital Sanitary Supply Company, Inc.
C. Dean and Sandra Carlson
Roy J. Carver Charitable Trust
Central Financial Group
Central Iowa Race Corporation and Fitness Sports, Ltd.
Mary C. and Don Coffin
Commonwealth Electric Company
James and Patty Cownie
Denny Elwell Companies
DeWaay Capital Management, Inc.
Robert S. and Pam DeWaay
Joseph M. Dorgan Trust
Kathryn and Steve Duffy
East Des Moines Chamber of Commerce
A. E. Easter Family Foundation
EFCO Corp
Bob R. Emley
Evangelical Lutheran Church in America



honor roll DONORS

- Farm Bureau Financial Services
Farmers Mutual Hail Insurance
FEH Associates, Inc.
Michael E. and Jean Foley
D. Diane Fuller
Michael G. and Barbara Gartner
John C. Gertenrich Jr.
Thomas and Rosemary Gibson
Grainger Industry
J. Barry and Michele Griswell
Brett and Siobhan Harman
Heartland Finishes
Nickolas J. and Dee Henderson
Kent L. and Carole Henning
Deborah B. and Jerry G. Henslee
Holmes Murphy & Associates
Homesteaders Life Company
David and Barbara Hurd
Theodore M. and Susan Hutchison
Iowa-Des Moines Supply Inc.
Iowa College Foundation
Iowa Health-Des Moines
Iowa Lutheran Hospital Auxiliary
Richard O. Jacobson
Erna C. Jensen
John Anton Lord Trust
Charles S. and Jaina A. Johnson
Kessler's Team Sports, Inc.
Daniel J. and Ann L. Krumm Charitable Trust
Timothy and Sarah Krumm
Donald F. and Charlene Lamberti
Robert E. and Ann Larson
Legacy Bank
James E. and Pat Luhrs
Lutheran Community Foundation
Marsden Building Maintenance
Margaret McCullough
Martin Marietta Aggregates
Meredith Corporation
Kent C. and Regine Mericle
MidAmerican Energy
Pamela and Milton Milloy
Jack L. and Rachel Mithelman
Mary May Mullins*
Nationwide Insurance
Neumann Brothers, Inc.
James W. and Shelley Noyce
John and Mary Pappajohn
Adele M. Peterson*
Pioneer Hi-Bred International, Inc.
Marvin* and Rose Lee Pomerantz
Prairie Meadows Racetrack & Casino
Principal Financial Group
La Verne C. and Janice E. Quass
Rasmussen Family Foundation
John P. and Cheryl Rigler
Clayton L. and Helen Ringgenberg
Richard Morton* Root & Ruth
Bailey* Root Charitable Trust Fund
- Ernest I. and Florence E. Sargent Family Foundation
Denis and Sara Schaefer
Paul and Claudia Schickler
Gordon J. and Karen J.* Smith
Snyder & Associates
B. Joan Sorensen
Southeastern Iowa Synod
The Stelter Company
Connie and Thomas H. Stevens
Stew Hansen Dodge City Jeep
Ellen M. and Lawrence Strachota
Elizabeth and Joseph L.* Strasser
Thrivent Financial For Lutherans
Trans Iowa Charters
Triplett Companies
Tursi's Latin King
US Bank
Venter Spooner Inc.
Kim and Jean Walker
Walsh Door and Hardware
Wellmark/BlueCross BlueShield of Iowa
Wells Fargo Community Support Campaign
Wells Fargo Foundation
Educational Matching Gift Program
Wells Fargo
Dianne M. and Paul M. Werger
Dennis A. and Robin T. White
Martha A. Willits
Connie Wimer
James H. and Sandra Windsor
Woodman of the World
Katharine M. and Ronald Yarnell
Zane Smith Commercial
Werner E. and Ruby R.* Zarnikow
- Dean's Club**
Abbott Laboratories
AllPlay
Artcraft, Inc.
BP Fabric of America Fund
Cable Tech, Inc.
Capital Sanitary Supply Company, Inc.
Tina and Scott Carter
Brian Chittenden
Daniel H. Cosgriff
Connie and John Dawson
Electrical Engineering & Equipment Co.
Debra D. and Don Franzen
Diane E. and Kevin R. Gass
Beth B. and Stephen Gaul
Golf Cars of Iowa
Randall W. and Vicki D. Gunsaulus
Hawkeye Truck Equipment
Marion Hvistendahl
The Elvin and Eugenia Lerager
Fund of the Lutheran Community Foundation
Jana and Kyle Morgan
H. Michael and Carolyn Nehls
Alice Kathleen Peterson
Jay B. and Tami Prescott
Patricia and Kevin Rinke
- Erma J. Selser
Speck USA
St. James Lutheran Church
The Boeing Company
True-Pitch
UPS
NFS Grundtvig Society
Adventure Lighting
Adventures in Advertising
Michael and Ronda Ammann
Lisa and Thomas Andersen
AXA Foundation
Beth and David W. Bishop
Mark and Sally A. Brandhorst
Cathy M. and Richard Brent
Brooks, Borg & Skiles
Gary and Rhonda Busch
Anne and Zachary R. Butler
H. Eugene and Delores Cedarholm
Chemorse, Ltd.
Bradley and Peggy Davis
Kathryn Dawley
Denmark Lodge No. 35 D.B.I.A.
Robert D. Dilley
Dow Chemical U.S.A.
Irene Faass
Don E. and Mary Ellen Fee
Deb and Kevin M. Gannon
Amy and Edward Allen Getty
Brenda and William G. Gorman
Susan R. and Timothy A. Guiter
John Deere Des Moines Works
Dennis E. and Ann Kaven
Lucina M. Kimpel
Krist Insurance Services
Jason G. Luedtke
Gary Lynch
M & M Sales
Patricia A. and Patrick J. McAdaragh
Mary and Tim McLean
Jerry L. Monner
Our Saviour's Lutheran Church
Debi and Tim Pestotnik
Cecilia and George F. Phillips
Troy A. and Amy Plummer
Janice and Joe Reutter
Ry-Land, LLC
Tom Schneider
Soccer Connections
Spahr Inc.
Lawrence F. and Marilyn E. Staples
Jean A. and Ronald D. Steenhoek
Frances and Roger D. Stefani
Tension Envelope Corporation
Evan A. Thomas and Liz Teufel
Coralie Turner
Arlan W. and Barbara A. VanRoekel
Carolyn M. and Kenneth J. Wassenaar
Ralph and Sue Young
Century Club
Richard D. and Sandra K. Abben
ABS Fire Equipment Inc.
Kevin Aholt
- Air Products and Chemicals, Inc.
Ameriprise Financial Gift Matching Program
William '52 and Mary Ammentorp
Gene W. and Laural L. Anderson
Anonymous
Paul R. and Sandy Axness
Carol Bahls
Corinne and Tom Ball
Bonnie C. and Russell L. Banzhaf
Don and Pamela Barnes
Diane and James W. Belden
Harold R. and Janet L. Belieu
Lonnie and Pauline Blass
Norma J. Bolitho
Deborah and Ronald Bollmeyer
Mark and Michelle Britton
Charles L. and Linda L. Brown
Joyce W. Brown
Bruce Barfnecht Trucking
Ronda L. Burnes
Cathy A. and John E. Cain
Elizabeth Campbell
Capitol City Graphics, Inc.
Gary Carpenter
Garland K. and Mona Carver
Lucas J. and Lindsay J. Casey
Annette and Jason G. Chance
Ann M. and Brian D. Claney
Terry and Valerie Coffman
Charles and Marcelle Coharde
Kim and Nick Conforti
Curtis and Terri Craig
Diana Crank
Connie A. and Michael D. Crawford
Chrisotpher and Melissa Cutler
Cy Wakeman Inc.
Ivan and Janiece E. Davis
Scott DeBerg
Jamey Deen
Della and Mark Degner
Ammertte Deibert and Dennis Palezewski
Donahue Insurance Agency, Inc.
Dietrice and Greg Donahue
David Doran
Dave E. and Mary E. Drey
Joseph and Lori Dunham
Michele A. and Dunne
Chris Duree
Laura Eaton
Mark and Tammy Englund
Gary L. and Meredith C. Ersland
Randy and Susan K. Falkner
Beth and John Fee
Lyndi M. Flugum
G & G Plumbing
Brooks and Debbie Gard
Natali M. Gardiner
Brian and Leila Girsch
Judith A. Goodwin
Judith A. and William R. Haller
Dana and Jake Hansen
Rachel S. Baron-Hanson and James G. Hanson
Eugene and Janet Hayes
- Joel P. and Linda Helixon
Angela and Rory Henry
Diane K. and Richard H. Hickman
Cherie and Marlin Hill
Diane H. and Shane R. Hillenga
Carmel E. Hinkle
Duane L. Hogans and Patty M. McAndrew-Hogans
Juliette Houseman
Iowa Association of Independant Colleges and Universities
Hugh M. and Jeanette R. Johnson
Kenneth S. and Mary S. Jones
Dave J. Kaisand
Mark E. and Peggy L. Kerr
Roger and Susan Ketel
Erica and Chad Kluver
Jill R. Knowler
Deborah Krueger
Leachman Lumber Company
Sheryl Leytham and Rod Powell
Jacque and Randy Liebe
Ira W. and Mary H. Link
Cheryl and Mike Love
Beverly S. and Kenneth Magnani
Joan Mattes
Bill and Patricia Matthews
Chris and Dixie M. McCormick
Rebecca and Stephen M. McDonnell
Molly K. and Walt McDowell
John A. McTaggart
J. M. Miller
Gerald and Noreen Modlinski
Mark and Robyn Mohler
Bonita J. and Larry G. Moore
Alfred H. and Arlean Most
Helene Neville
Charlotte and Marlin Nielsen
Judy and Randy Nikkel
Ronald P. Olinger
Julie and Kent Opdahl
Kristine D. and Neil Owens
Pella Rolscreen Foundation
Marian Petersen
Michael T. and Sandra K. Phillips
Evelyn Powell
Precision Drainage & Excavating
Carl A. Rathbun
Betty B. and Reimert T. Ravenholt
Renewal by Andersen
Paul E. Rider
Merrie E. and Ric W. Rominger
Deb and Donald A. Rose
Leanna and Jeff Rosel
Bernie and Kim Rost
Clara E. and Melvin V. Samuelson
Bill Schacherer
Michelle D. Schaut
Jody and Terry Schechinger
Jean and John Schneiders
Jodi K. and Stuart Scott
Angie Shuck
Mark W. and Sonya Siebert

Ceil and Rodger J. Slings
 Mike and Terry Spencer
 Marian and Vaun Sprecher
 Pete Steinke
 Gary K. and Pamela R. Stephens
 Patricia M. and William Stevens
 Storey Kenworthy Company
 Denise and Richard Sullivan
 Shawn Sullivan
 Margaret B. Swanson
 Bonnie J. and Todd M. Terpstra
 Aaron Tinder
 Raylene and Thomas J. Tisdale
 Torrey Construction
 Charles and Denise Townsend
 Valhalla Land Company
 Hazel Van Ekeren
 Sheryl D. Walton
 David L. and Jean E. Wathen
 Michael J. Weber
 Douglas M. and Jeanette Wiig
 Patricia A. Williams
 Mary Jo and Tom Williams
 Diane M. and Mark Wilson
 Marcella Younker
 Alec I. Zama
 Corbin J. and Erin Zea
Contributors
 Janice S. and Ronald R. Adams
 Kevin and Pat Adolf
 Earl and Paula Agan
 Lori Ahlf
 Robert G. and Theresa G. Ahlf
 Dianne and Robert Ahlstrom
 Alice L. and Harlan E. Alexander
 Christine Alexander
 Hermal and Ruth Alexander
 Bonnie and Jim Allen
 Douglas J. and Toni M. Althoff
 American Family Insurance
 Anderson Erickson Dairy
 Elaine Anderson
 Brad and Kris Anderson
 Linda K. and Paul Anderson
 Larry D. and Peggy Anderson
 Bernard Andrews
 Dale Andringa
 Susan Angell
 Gary E. and Nancy S. Anker
 Michael Anthony
 Applebees Neighborhood Grill
 Denise and Michael Arkema
 Marilyn E. Arnold
 Colleen and Rodney Ashman
 Evelyn Ashour
 Douglas G. and Peggy L. Austin
 Auto Owners Insurance
 Dolores J. Auxier
 Reed Backstrom
 James and Stephanie Bagatti
 Corey Bailey
 Eric C. and Sarah E. Bailey
 Lori A. and Robert A. Baker
 Chuck and Shirley Ballard
 Faron J. and Michelle L. Bandstra
 Amanda L. Banks
 Irv Banzhaf
 Lindsey Banzhaf

Douglas L. and Elizabeth A. Barnard
 Jana and Rick L. Barnard
 Judy M. and Thomas G. Barnes
 Barb Barney
 Cindy and William Bauer
 Dale and Jane Bauer
 David B. and Debra J. Beaty
 Cynthia Beaudette
 Art and Diane Beck
 Mary Beck
 Beverly and Dennis Belieu
 Jenny and Pat Benedict
 Lucas A. Bennett
 Brian and Lora Benrud
 Carrie A. Berg
 Connie Berkey
 Dorothy Berkey
 Jason Berkey
 Richard Berkey
 Carla Bernholtz
 Elise M. Bernholtz
 John and Mickey Bernholtz
 Becky and Tim Bianchi
 JoAnn Bianchi
 Bianchi's Hilltop Restaurant
 Christal and Ronald R. Birkenholz
 Pat E. Bishop
 Jim and Pam Blankenfeld
 A. Z. and Jan Blessum
 Wayne Blythe
 Gary L. and Marilyn S. Borkowski
 John Borts
 Homer L. Bosserman
 Dawn and Michael Bourland
 Deborah D. (Guy '03) and Gary Bowlin
 Patricia and Perry D. Bradshaw
 Barry D. Brady
 Glenda G. and J. Dan Brady
 Mary Ellen and Richard Brady
 Teresa Brandel
 Janet and Joe Brandhorst
 Jeanette Braun
 Susan J. Breakenridge
 Robert C. Breeden
 Laurie A. Breton
 Bright Construction
 Sharon L. Brindle
 Angela M. Britton
 John and Margaret Britton
 Earl and Mary L. Britton
 Merle Britton
 Kenneth L. and Marta L. Brockman
 Kay and Martin Broich
 Dustin C. Lind and Andrea Marie Brooks
 Jeff and Pamela Brooks
 Dennis Brouhard
 Donald L. and Janis M. Brown
 Anna and Michael Brown
 Pamela J. Brown
 Peg and Danny Brown
 Rebecca Brown
 Deanna J. Brudtkuhl
 J. R. and Joy Brumley
 Julie H. Bulau
 Julie A. and Robert F. Bulver
 Melvin Burch
 Barbara Burn
 Randy and Renee Burnes

Roberta M. Burnes
 William L. Burr
 Ann and Merrill Burrell
 Kenneth F. Busch
 Bill Buttweiler
 John F. Cain
 Heidi J. and John Calcaterra
 Coedellia Calhoun
 Coach Calkins
 Victoria L. Campbell
 Darlene M. Cangas
 Michelle and Terry Capman
 Carlos O'Kelly's Mexican Restaurant
 Cynthia A. and Jeffrey H. Carlson
 Connie L. and Marvin E. Carlyle
 Kay Carnes
 Greg and Jill Carpenter
 Kathy Carpenter
 Joseph B. and Vicki Carr
 Jordan and Sarah Carstens
 Ann N. and Anthony D. Carter
 John and Teresa Carter
 Kathryn K. and Roger Carter
 Beverly K. and Clarence C. Cassler
 Richard E. and Teresa M. Casson
 Tim Caylor
 Central Information Solutions, LLC
 Keith M. Chace
 Ruth Chace
 Annette and Douglas Chalupa
 Jody A. Chalupa
 Champps America
 Kent and Lisa Chapman
 Dorian and Pamela Charlson
 Roxana E. Chavarria
 Cheddar's Casual Cafe
 Ben Christiansen
 Ken Christiansen
 Terry L. Christiansen
 Lee and Melanie Christman
 David L. Clark
 Dennis P. and Margaret Clark
 Jeffrey and Kristina Clark
 Arlene and Richard Clark
 Stuart and Suzanne Cloud

Faruk and Mevlida Cocic
 Irvin Cockerham
 D. Y. and Gerald W.* Coe
 Linda L. and Thomas D. Cole
 Charles N. Collins
 Kathy Collins
 Barbara A. and John P. Colwell
 Comiskey Glass & Glazing
 Audley L. and Sharon Conrath
 Kayleen M. Conter
 Douglas E. Coomer
 Linda and Robert Corbitt
 LaRee Cory
 Marty and Sue Counterman
 Kathy Courtney
 Vicki Courtney
 Kim and Willie Cowart
 Robin L. and William O. Craig
 Andrea S. and Stephen G. Crampton
 M. E. Crawford
 Crystal Clear Water Company
 Robert W. and Mariann H. Culver
 Rebecca S. Culver
 Ron and Sheryl L. Culver
 Guy E. Cunningham
 Joan P. Cupp
 Dawn M. and Gregory L. Dahl
 Ron and Theresa Dake
 Leonard E. and Anabelle Dalberg
 Tim Daniels
 Bruce and Michelle Davidson
 Francis L. and Jeffrey J. Davis
 Laurie Davis
 Jim and Joanne Day
 Donna DeBerg
 Lisa Deberg
 Newt and Pat DeBerg
 Carolyn and Kenneth F. Decker
 Lyle and Reeca DeGoe
 Marilyn DeJong
 Linda R. Delair
 Julie and Michael Delaney
 Laura and Steven Delaney
 Cynthia and Frank Demers
 Randall J. and Susan E. Denner
 Cicily Dennis
 Lisa Deputy-Tessum
 Des Moines Botanical Center

Fahira Deumic
 Angela Dickinson
 Leon W. Dieckmann
 Richard Doherty
 Gary Donahue
 Janice K. Donahue
 June Donahue
 Kelly P. Donahue
 Jon M. and Linda M. Donahue
 Lois M. Donahue
 Mary Donahue
 Dennis Douglas
 Edith Downing
 Marty and Sue Doyle
 Drake Diner
 Gary and Karen Dreckman
 Marvin and Therese M. Drey
 Dennis J. and Rhonda R. Drey
 Lennie and Kathy Driever
 Donna Dubberke
 Dwight and Janice Dubois
 Joseph and Stacey Dunn
 Dee Ann Duree
 Tom Dutcher
 Leila Dzafic
 Amy Eagle
 James R. and Jennifer B. Eaton
 Gary and Jeannine Eden
 Darci and Justin Edler
 Amanda M. Edwards
 Mike Edwards
 Bonnie Ehlers
 Bonnie and Kevin Ehlers
 Deborah and Ehlers
 Michael R. Ehlers
 Elsie M. Eichorn
 Anita and Dick Eime
 Kathy M. and Terry L. Elings
 Angie Elliott
 Randy and Ruth A. Elphic
 Marian Emmack
 Rhonda and Steve Emmack
 Susan K. Emmack
 Holie Empey
 Linda and Mike Engleman
 John Englund
 Eldon Erlandson
 Richard L. Erps
 Linda Espey
 Dennis Evans
 Jan Evans



honor roll DONORS

- Heidi and Kevin Evans
Tanya Everson
Eyeowa Optical Company
Fareway Food Store
Gerene Farrell
Wendy Fedler
Antoinette and Richard L. Fetter
Dan Fiedler
George L. and Mary Lou Fiedler
Jeanette M. and Robert E. Fiedler
Michelle and Ronald J. Fiedler
Barb and Thomas R.+ Fischer
Tamara K. and William J. Fischer
Belva and Ronald Fish
Connie K. and James L. Fisher
Rod and Sue Fisher
Larry W. and Virginia L. Fisher
Rosalie A. Fitzjerrells
Angie and Martin Fitzpatrick
Don Fitzsimmons
Jim and Terry Foell
Karla and Ronald Foresman
Christina R. and Roger D. Fors
Forst Repairs
Monroe Fouds
Carol Franke
Scott A. Franklin
Charles and Susan Freml
Fridley Theaters
Pattie and Scott E. Frohlich
Amy and Jeff Frost
Betty Lou Fuller
Deborah and Steven Fuller
Linda C. and Richard L. Fuller
G M Builders & Son
Deborah J. and Ricky L. Gaede
Denise and Timothy Gallus
Colleen Gangestad
Clara L. and Kenneth E. Gansz
Jeffrey L. and Suzanne M. Gardner
Florence E. and James B. Garland
Jill A. Garton
James R. and Margaret A. Garton
Greg and Lori Gaskill
Christina M. and Eric P. Gassman
Jeanette Gavigan
Sheryl L. and Steven D. Gehlsen
Gladys and Rick Genskow
Alvin S. and Linda L. Gertken
Dot and Elroy Gertner
Avilah Getzler
Miriam N. and Russell D. Gibbs
Cathy Giberson
Doug and Julie Gibson
Cindy and Clint Gillaspie
Larry A. and Teresa L. Gilliam
Godiva Chocolatier
Carlita M. and Ronald E. Godsey
Dan Gogerty
Jerry W. Goodwin
Gary and Tina Gorman
Walter Gorman
John and Mary Goss
- Grace Cleaning & Maintenance
Gary R. Grant
Debra J. and Jerry W. Gray
Bonnie K. Green
David R. and Jacqueline A. Green
Jeffrey D. and Kimberly A. Greim
Holly and Michael Grgurich
Jacki and Joel Grier
Cynthia and Max G. Grim
Donnette and Gary Grimes
Kenneth E. and Rhonda S. Grimm
Donald and Dorothy Groenendyk
Randy Grossman
Cindy and Ralph Grout
Lee Guitier
Janet M. and John Gunsaulus
Dorothy A. and George E. Gustin
James and Ramona Haag
Linda J. and Thomas J. Haag
Sam Hake
Krisa K. Hall Carlson
Lavon G. Hall
Joan T. Hallman
Abraham E. Savage and Richelle D. Hamilton-Savage
Diana K. and Monte C. Hammond
Rickie Hand
Donald F. and Geraldine Hannasch
Barbara Hansen
Barbara J. and Ronald G. Hansen
James E. Hansen
Belinda and Dwayne Hanson
Kenna C. and Melvin F. Hardenbrook
Jerry Hardin
Lois J. and Wendell Harms
Dawn S. and James A. Harnack
Lorie Harrenstein
Howard Harris
Mary K. Harshbarger
Ed Hart
Joyce Hart
Paula M. Hart
Sandy Hart
Deborah L. Hartung
Joan and John V. Hartung
Chris and Julie E. Hartzler
Marry L. Hay
Marylin L. and Rich Hay
Betsy and Robert L. Hay
Joanne Heavey
Larry Hebert
Margaret A. and Truman J. Hedemark
Diana L. and Russell S. Heggen
Kathryn and T.J. Heither
Janette A. and Patrick J. Helixon
Christopher J. and Tracy L. Helixon
Brenda and Rodney D. Henderson
Alan J.* and Joanne Henderson
Peggy Henn
- Betty A. and Gordon S. Hennick
Dennis M. Henning
Doug Henning
Craig L. and Sandra J. Henning
Laura L. Henriksen
Betty L. and Richard W. Henry
Wayne Henry
Janet S. and Jeffery A. Herber
Karen and Samuel Herr
Walter E. Herron
Kimberly and Myron D. Herzberg
Jean and Ken Heuermann
Beverly L. and Terry L. Heuton
Bruce Hiley
Tom Hill
Charles C. and Sandra J. Hilliard
Lynn A. Hinkle
John P. and Terri L. Hoberg
Tom Hockensmith
Sheri Hocker
Darius N. Hogans
Emma Hogans
Ron Holbefeck
April and Eric Hoover
Lori Horstmann
Chris G. Hotchkiss
Nick V. Houseman
Robert and Rosetta Houseman
Brenda L. and Douglas J. Houser
David and Laurie Houser
Susan R. Howard
Dennis B. and Nancy L. Howser
Marty and Rich Huber
June K. and Randy D. Huewe
James and Karen Hughes
Jay W. and Madonna S. Hughes
Nathan M. Hull
Krista K. Hunt
Dawn S. and Pat Hurley
Jennifer L. Husen
Jim and Mitzi Hymbaugh
Hy-Vee Food & Drug
I.C.E. Production Services
Edina and Natko Ibukic
Jackie M. and Tim R. Ingles
Iowa Beef Steak House
Hazim Islamovic
James and Marge Iversen
Susan Jacobson
Herb and Patricia Jangor
Michael J. and Sandra K. Janowicz
Ashley L. Japczyk
Ismeta and Rasim Jaskic
Kellie and Rick Jaworski
Dick Jay
Robbie J. Jay-Hay
Catherine S. Jensen
Joe's Crab Shack
Wayne Johann
Bill and Jodi Johnson
Dave Johnson
Dennis R. and Elaine M. Johnson
Gary D. and Patricia A. Johnson
Gus A. Johnson
- Irene M. Johnson
Debbie L. and Tom G. Johnson
Eric and Sandra Johnston
Aaron A. Jones
Brad and Diane Jones
Gene Jones
Janie and Jeff Jones
Mary S. Jones
James E. and Rhonda K. Jones
Charlotte H. Jost
Therese M. Judge
Anna E. Juhl
Mary K. and Ronald L. Juhler
Dalene and Mark Kahler
Joseph M. and Nancy L. Kaiser
Jill and Kevin Kalkwarf
Lee and Nancy M. Kane
Barry D. and Sharri Kankel
Carla J. and Michael H. Kaplan
George and Karen K. Karaidos
Kathryn Kasper
Jody and Michael Kasper
Nicholas and Patricia Keiderling
Nancy M. and Steven J. Kellander
Kimberly K. and Lou Kelleher
Lorraine E. Keller
Jessi M. Kelley
Barbara and Paul Keltner
Kentucky Fried Chicken
Howard F. Kilburn
Kenneth R. Kilker
Dong H. and Kelly J. Kim
King Investments, Inc.
Jean and Ron Kingsbury
Rebecca A. Kinsey
Sam and Sheila A. Kirby
Joan M. Klein
Eric W. Kleineck
Linda R. Kleineck
Deborah and William G. Kneller
Patti Knight
Wilma Kobilska
Herb and Shelly Koch
Amber and Jason Kohlhaas
Janice and Jeff Kohlmeyer
David and June Koopmans
Lucas J. Koopmans
Gail and Joe R. Kotval
Velida Kovacevic
Donald Krist
Bill Krocheski
Beth S. and John R. Krogh
Ryan S. and Trisha L. Krogstad
Galen and Gloria R. Krohn
Daniel C. and Julie K. Kruse
Scotty Kurtz
Michelle and Wayne Lacher
Gregg W. and Sarah B. Lagan
Mike Lagergren
Joann E. and Joseph R. Lambert
Lena M. and Nelson Lambert
Wade K. Lance
Rebecca H. and Mark Lang
Bill Lange
Tammy and Vincent B. LaSala
Michael Latta
Craig J. Lawig
Gregory J. and Michelle R. Lawrence
- Rhonda K. and Tim Leach
Jack Leggio Jr.
Janice K. and Robert J. Leinen
Lennox Industries, Inc.
Belinda Lenzini
Debra E. Leonard
E. and Irene M. Leonard
Dale and Janet Lewis
Hugh Lickiss
Jan and Matt Lindeman
Arthur A. and Marilyn L. Lindgren
Jeffrey and Lynn Lindquist
Gary A. Link
David A. and Elizabeth J. Lipinski
William Lister
Donald and Joan Little
Nancy J. Little
Jim and Mary Livermore
Joyce Livingston
Derrick and Karie Livingston
Sherry Lockhart
Barbara K. and Thomas A. Lograsso
Jenna C. Loney
Steven C. and Terri L. Loney
Eric Lonnevik
Lorann Lonnevik
Patricia Lopez
Fred Lorensen
Mike Louis
Norman R. and Sandra Lubberden
Glen R. and Ruby Lucas
Paulette S. Lundberg
James D. and Rosanne M. Lundeen
Michelle M. Lundquist
Edwin G. Lust
Terri and Todd Lust
Donald J. Lyons
M. Bruno Electric, Inc.
Carol L. and Robert T. Mable
Roxanna L. Magnani
Eve and Steve Mahr
Kevin Makalous
Gary L. and Pat Makovec
Janice and Jeffrey Makris
Vivian L. Mann
Dennis Marshall
Jay Marten
Doug and Sherri Martin
Robert and Sharron Martin
Howard and Teresa Martz
Tanner Marvin
Janet M. and Wilbur Mathes
Julie K. and Wes Mathes
Matheson Cabinets, Inc.
Lynn and Mike McCabe
Bob and Mary McCarthy
Laura McCarville
Joseph R. and Rebecca McChurch
Diane L. and Stanley W. McClure
Dean and Tracy L. McCormick
Connie L. McCroskey
Jack E. McCuen Jr.
Brenda L. McCulley
John and Kristine McDonald
Bruce McEltree
Douglas H. and Nicole McFadden

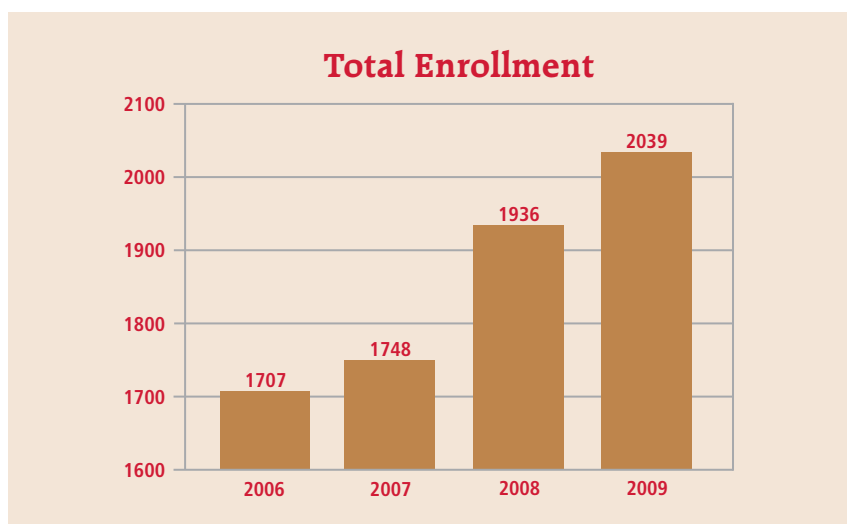
Larry McGhee
 Barbara and Stephen McIntire
 M. K. McLaughlin
 Michael R. and Terry McLean
 Charmayne McMurray
 Larry McMurray
 Mike and Robin McNichols
 Marcia McPherrin
 Dick and Juanita McWilliams
 James W. and Sue A. Mease
 Rhonda Meester
 Nettie G. Mein
 Gary and Lynne S. Meinen
 Ann and Marty Melberg
 Lynda Mellinger
 Jeffrey A. Mendenhall
 Alexe F. Mericle
 Andrea Mericle
 Bruce and Gael Mericle
 Erik Mericle
 Donna Merrick
 Bill and Lori Messerschmidt
 Mark and Sherry Meyer
 Sylvia and Jerry Meyers
 John Mickelsan
 Laurinda L. and Tom C.
 Mihalovich
 David and Shirley Miksell
 Jim and Kathy Milder
 Cecilia M. Miller
 James N. Millhone
 John and Mary Moats
 Bonnie Mohler
 Norma Monohon
 Beverly Monohou
 Darlene Montieth
 Deborah and Phillip B. Moore
 Linda and Matt Moore
 Brenda and Russell Moorehead
 Jennifer N. Moorehead
 Bill Morgan
 Sue Morrison
 Sheri Muller
 Cheryl A. and Patrick A.
 Murphy
 Carol A. Murray
 Wendy Nab
 Glen A. and Jacqueline M.
 Naber
 Lana M. and Steve C. Nail
 Bruce and Connie Nanninga
 Katie J. Nanninga
 John Nardini
 Brian and Mary Narveson
 Kimberly and Theodore
 Narveson
 Travis C. Nedved
 Lori and Mark Neill
 Alpha Nelsen
 Candace L. and Paul E. Nelsen
 Michael L. and Vicki L. Nelson
 Jim and Vicki Neswold
 Dan Neville
 Joe Neville
 Steven Neville
 Carolyn NewKirk
 Dorathe and Doyle D. Nielsen
 Renee and Richard Niles
 Kim and Stephen Nizzi
 Noah's Ark Ristorante
 Sherry Nolte
 Carol A. Norris
 Barb and William Novak
 Maureen A. and Steve Nowak

Nugent
 Oberbroeckling Insurance, Inc.
 Kim and Tim O'Connor
 Merlin and Robin Olberding
 George A. Olinger
 Margaret R. Olinger
 Richard L. and Sybil D. Olinger
 Heath and Shelby Olinger
 Katherine Olson
 Eunice G. O'Neil
 Teresa M. and Timothy J.
 O'Neil
 Justin Opantry
 Jacob F. Opel
 Andrew J. and Leilani Osborne
 Edwin L. Overturf
 Kenny Owen
 Darryl and Julie Pagel
 Darryl Paget
 Dennis and Kathy Pagil
 Vlado and Zlata Pajser
 Gary D. Palma D.D.S.
 Dave Palmitier
 Paradise Sun and Spa
 Juliana M. and Mark G. Parker
 Portia Y. Parker
 Jeff Parsons
 James M. and Sharon Patch
 Buzz and Jean Paterson
 John and Marcia Patin
 Ann and Rick Pauley
 Mary and Philip J. Paxton
 Doug and Sheryl Pearson
 Jim and Vicky Pedersen
 Kevin C. and Rhonda J.
 Pedersen
 Diana and Randy Peel
 Becky Perez
 Harry R. and Johanna Perry
 Julee L. and Troy D. Petersen
 Dave and Mary Peterson
 Larry D. and Marilyn J.
 Peterson
 Brent and Lorinda Peterson
 Mark L. and Mary Peterson
 Micky D. and Tamsen S.
 Peterson
 Byron and Jana Peyton
 Joanne M. Pfeiffer
 Kimie Phillips
 Daniel F. Pick
 Robert Picolet
 Joel E. and Julie A. Pietig
 Clifford F. and Stephanie J. Pim
 James E. Pingree
 Bambi L. Piper
 Sally and Wendell Piper
 Plueger Masonry & Concrete
 Construction LLC
 James A. and Paula J. Poli
 Mark Pollacci
 Rick L. Poppert
 Gordon L. and Nancy J. Port
 David Porter
 Jeanne M. and William M.
 Porter
 Irene Postma
 Dave and Kim Powell
 Dean and Rozanne Prather
 Michael and Liz Price
 Christy Promes
 Peter H. Prugh
 Cathy M. Pryor
 Lori and William Puffett

Arthur E. and Judith C.
 Puotinen
 Carla and Tracy L. Purdum
 Patricia D. Purviance
 Daniel and Patricia Putney
 Puttin on the Ritz, LLC
 Susan and Wayne Pyatt
 Qdoba Mexican Grill
 Alec Quijano
 Nancy Rabey
 Velma Raglin
 Pamela S. and Randall D.
 Ramaker
 Eric Randall
 Lisa and Michael Randolph
 Kathy and Steve Ransom
 Chuck Rauch
 Darla E. Ray
 Cerrita G. and Brian K. Reed
 Darlene Reed
 Kathy K. Reed
 Mary and Narman Reeves
 Patti A. Reeves
 Donald L. and Joyce E.
 Rethmeier
 Lowell D. and Lucille Reynolds
 James and Janis Rich
 Becky and Ron Riley
 Barbara and William
 Rinderknecht
 Randy J. Ripperger
 Risk Management Resources,
 Inc.
 Jennifer Risolvato
 R. D. Rittler D.D.S.
 Ken and Lori Rizer
 Roberts Dairy
 Al and Coleen Roberts
 David and Gina Robinson
 Callie J. Robison
 Tony Rodriguez
 Doug and Leigh A. Roerig
 Helen Rogers
 Dallas E. and Gerry Rohrs
 Dewey R.* and Louise* Roland
 David E. Rominger
 Bernard R. and Sandra J.
 Rooney
 Nancy Rorick
 Conway Rosell
 Steve Roskens

Dan and Judy Rotach
 Marcia and Ralph Roth
 Patti J. Roth
 Jerry and Linda Roy
 Rose M. Rudin
 Mary Ann Ruhter
 Keith and Roxane Rupiper
 Tracy A. Rusch
 Joe and Kerry Ruth
 Emina and Ibro Sabic
 Marty R. and Tami S. Sagers
 Laura and Gregory Salazar
 Charlotte and Theodore Saliers
 Annette J. and Rick A.
 Sandquist
 Douglas D. Sassmann
 Brandy L. and Bryan L. Satern
 Amy Sawyers
 Roger Saxton
 Scardina Builders
 Delbert L. and Madelene
 Schertz
 Dustin Schertz
 Helen and William C. Schinkel
 Connie Schippers
 Diana L. and Terry A.
 Schleisman
 Kerri Schlueter
 Heather and Jared Schmidt
 Jamie R. Schnede
 Schneider Graphics
 Justin D. Schneider
 Lisa and Marty Schneider
 Larry and Virginia Schneider
 Cindy Schnell
 Michelle and Wayne Schnier
 Debbie and Pat Scholer
 Joel M. and Vicki L. Schreiner
 Allen and Tammy Schroeder
 Eleanor R. and Elyle J. Schrum
 James and Marcia Schultz
 Brad and Deanna Schulze
 Charles W. Schuster
 Julie Scott
 Terry G. Seeders
 Jane Sehman
 Jennifer L. and Robert G. Selby
 Sentry Insurance Foundation,
 Inc.
 Jessica M. Shaeffer
 Daniel L. and Janet A. Shaffer

Diane C. and Randy L. Shanno
 Virginia L. Shannon
 Angie Sheets
 David Shipley
 Francis and R. M. Shipman
 Jody L. Shnede Henning
 Jeffrey E. and Lisa K. Shockley
 Rodney and Sandy Shore
 Lanny M. and Linda Shultice
 Paul Shulz
 Michael D. Shupp
 Michelle Sickles
 Dee Ann W. and Larry D.
 Sidwell
 Marsha L. and Robert J.
 Silhacek
 Heather L. and Larry R.
 Silverstein
 Lee M. Silverstein
 Jack and Ruthanne Silverstein
 Dave and Becky Simmons
 Robert L. and Teresa A. Sims
 Laurie and Scott Sinklier
 Michelle Sipe
 Harold Sitzmann
 Bonita R. and Jerome D.
 Siverson
 Carol and Roger Skaw
 Douglas L. and Sherrill R.
 Skinner
 Dusty Skoog
 Gary Skoog
 Sleepy Hollow Sports Park
 Andy and Janelle Smith
 Annie M. Smith
 Arthur O. Smith
 Brent and Jacie Smith
 Edith and Sherm Smith
 Debra K. and James K. Smith
 Lana M. and John P. Smith
 Lisa Smith
 Craig and Rebecca A. Smith
 Dean Snakenberg
 Betty Snuggs
 Gary N. and Irene Snuggs
 Joyce Snyder
 Colleen and Gary Sogge
 Chuck and Heather Solum
 James E. and Melissa A.
 Sommars
 Don Sones



Nela Sowder
 Kay A. and Randy W. Spear
 Denise and Tim Spears
 Gwen and Mark Speck
 Dick and Jo Ann Spencer
 Tim Spencer
 Charles and Mary Spitzer
 Sport Clips
 Marcia and Sam Stam
 Lynda Stanford
 Brenda J. and Larry D. Stanton
 Starbucks Coffee
 Helen Stascar
 Susan and Bryan J. Stearns
 Jeff Steihes
 Scott Steinbach
 Curtis K. and Kristine L. Steinmetz
 Dwight D. and Shari Stelling
 Jill and Kent Stensland
 Chris Stepleton
 Thomas M. Stockton
 Ventsislav M. Stoimirov
 Darrel Stout
 Gwendolyn G. Straight
 Strettor Machine & Tool Inc.
 Susan Strouse
 Sugar Shack
 Cynthia and Dave Sullivan
 Kelly A. Sullivan-Dugan
 Melissa and P. Sum
 Sump Insurance, Inc.
 Christopher J. and Melisa D. Sunde
 Carolyn and Robert A. Sunde
 Superior Shine
 Debra M. Swanson
 Kenneth and Kimberly Sweisberger
 Mary Lou and Scott D. Syde
 Taco John's of Iowa
 Thomas M. Takayoshi
 David and Dawn M. Tallman
 Becky Talsma
 Tasty Tacos, Inc.
 Lorel L. and Rod Taylor
 Megan E. Tedell
 Michael A. and Sharon L. Teicher
 Beverly and Larry Telander
 Kay and Vernon Terpstra
 Bahjeh I. and Lee S. Tesdell
 Julie Tharp
 Dorcas L. and Raymond W. Thomas
 Betty and Charles Thompson
 Theresa Thompson
 Shawn Thomsen
 Betty and David Thronson
 Jolee Thurn
 Kurt A. and Kerri J. Timm
 Douglas L. and Kelly J. Tish
 David and Renee Topp
 James B. Tracy
 Dawn R. Trask
 Robert Trautwein
 Bruce T. and Susan E. Travis
 Carol and Ray Tri
 Katharina Tumpek-Kjellmark and Christopher Kjellmark
 Tursi's Latin King
 United Way of Central Iowa
 Amy and Joshua Urban

Robert Van Der Wiel
 Carroll and Lois Van Goys
 Kimberly J. and Mark A. Van Gundy
 Lori L. and Randy D. Van Scoy
 Bill and Dorothy Van Wyk
 Brenda and Jerry Van Wyk
 Kevin and Sharon VanderSchel
 Randy Vanderwall
 Todd Vanole kamp
 Carol and John VanWalbeek
 Donald M. and Patricia L. Varnum
 Mark Brown
 Eleanor and Lawrence Verwers
 Jennifer Vest
 Dean and Nancy Vetter
 P. L. and Rodney Vicker
 Mike and Tracey Viet
 Barb Voshell
 William T. Vriezelaar
 Cliff Vulgamott
 Colleen E. and Jason Wachter
 Elizabeth and Harold Wachter
 C. S. Avery and Joanne Wagner-Avery
 Brad and Debbie Wahlert
 H.E. Wallace
 Lundy Wallace
 Leyria R. and Ross A. Walters
 Carolyn D. and Jerrold Wanek
 Anette M. and James G. Wanek
 Don and Linda Ward
 Frances B. Waterman
 Barott Wathen
 David L. and Lois Wathen
 Jill J. and Rodd Watson
 Donna and Roger Watson
 Ron and Tamera S. Watson
 Melody and Stephen Webb
 Charles E. and Doris Weber
 Dan Weber
 Eva and Harold Weber
 Doxandra and Ronald W. Weber
 David and Linda Weeks
 Sharon and Tony Weiler
 Ronald J. Wells
 Allison K. Wesley
 Ann and Charles West
 Mark F. and Suzanne J. Westergaard
 Mary and Steven Wheeler
 Carol J. and John T. White
 Beverly J. and Lester C. Whiteaker
 Kathy Wichman
 Wendell Wiersma
 John and Kay Wiese
 Kelli G. and Randle E. Wiggins
 Lanette and Ron Willems
 Jacqueline S. Williams
 Gerda J. Willis
 Alan C. and Mary J. Wilson
 Michael R. and Ruthanne V. Wilson
 Patricia L. Wilson
 Chuck and Deb Winkleblack
 David A. and Jana L. Winter
 Chris and Lynna Wirth
 Marh Beth E. and Todd K. Wiskus

Vernell Wittrock
 Pearl Wolf
 Stacy Wood
 Woody's Heating & Air Conditioning
 Leonard Worcester
 Mitchel and Robin Worcester
 Tim and Vicki Worcester
 James and Roxann Wormley
 Cindy Worrell
 Chad and Shawna Wright
 Mary Wright
 Teresa and Tom Wurr
 Laurie A. and Wallace M. Yahm
 Angela A. and Scott D. Yegge
 Gary Young
 Jill and Josh Zbornik
 Jerry and Sharon Zbornik
 Dwayne and Vanessa Ziegler
 David A. and Kimberly R. Zieser
 Neva L. and Stanley D. Zieser
 Carolyn J. and Joseph Zimmerman
 Irene and Ronald Zinniel
 Alan and Amy Zoutte
 Becki and Layton Zylstra

HERITAGE SOCIETY

Ellen K. Andersen '45
 David E. and Karen T. Anderson
 Evelyn R. Beckman*
 Signe T. (Nielsen '49) Betsinger
 Dean R. and Mildred Betts
 Dagmar P. (Rodholm '31) Blankenfeld*
 Steven F. '69 and Nancy (Lavender '78) Bobenhouse
 Lloyd R.* and Ada* Bock
 Mervin Bro*
 John C. '66 and Colleen Burgeson
 William and Kristi Burma
 John E.* '56 and Joan F. (Whitaker '56) Carlson
 Virgil E. '48 and Boots (Rix '46) Christensen
 John E. '57 and Joan Ciska
 Hans J. Clausen '58
 Vivian Cline*
 Monroe J. '63 and Frances V. Colston
 Michelle D. Cook '95
 Eric T. '75 and Kathy Crowell
 Gregogry A. and Carmen M. (Beeman '69) Crump
 Douglas J. '80 and Kristin Detrick
 Robert and Pam DeWaay
 Lee and Diane (Gill '76) Doidge
 William L. Duncan '62*
 David M. Esbeck '59
 Pearl B. Frease*
 C. Fredrick '68 and Gerry '94 Fuller
 D. Diane Fuller
 Mr. and Mrs. Robert F. Galligan
 Margaret L. Gee '48*
 Donald E. '85 and Susan German
 John C. Gertenrich Jr.
 Harry W.* and Thyra* Gjelsteen
 Kristen L. (Legg '94) and Jim Gray
 Solveig E. (Petersen '61) Gregory
 Ethel C. Grote*
 Carl C. '55 and Jane A.* Hansen
 Edward '21* and Rosa* Hansen
 Kent L. and Carole Henning
 David G. Holmgren '73
 J. Robert and Joyce* Hudson
 Alice C. (Olsen '47) Humphrey
 Joy M. Ibsen '60 and Don Lenef
 Ruth E. Jacobsen '49
 William C. Jacobson '61
 Erna C. Jensen
 Harry C.* '40 and Ellen T. (Andersen* '41) Jensen
 Roland L. Jensen '46* and B. Joan Sorensen
 Delores (Holmgaard '40) and Ronald P. '41* Jespersen
 Marvin P. '47 and Helen (Nielsen '43) Jessen
 Richard N. '57 and Glenda (Pickett '57) Jessen
 Charles S. and Jaina A. Johnson
 Evelyn R. Beckman*
 Arnold A.* and Dorothy (Grunander '40*) Johnson
 Alice Jordan
 Peggy A. (Corley '94) Kacer
 Douglas W. and Louise Kachel
 Jeanette Kawaguchi
 Rev. "Gus"* '49 and Eunice J. (Hermansen '50*) Knudsen
 Luanne J. Knudsen '86
 Sonja Knudsen '57
 Richard G. '53 and Marilyn O. (Hansen '54) Kramme
 Kathrine G. Kuhlman '27*
 Terry W. '69 and Beverly J. Lantz
 Lavern '53 and Marilyn A. (Nissen '55) Larkowski
 Robert W.* and Dorothy* Larson
 Robert E. and C. Ann Larson
 Rev. Raynold J.* and Ena E.* Lingwall
 James E. and Pat Luhrs
 Ronald P. '57 and Melvie Maigaard
 Margaret McCullough
 Ferol Schrickler Menzel
 Daniel P. '60 and Alice V. (Olsen '60) Mikel
 A. Jane Molden*
 Leland E. '59 and Virginia Molgaard
 Harry E. '42 and Dorothy J. (Petersen '43) Mortensen
 Dennis and Gail Muehling
 Mary May Mullins*
 Judy E. (Dart '62) Murrow and Paul Riegan
 H. Michael and Carolyn Nehls
 Rev. Carl O. Nelson

Charles and Solveig C. Nelson
 Ivan E. '40 and Irene* Nielsen
 Rev. Ove R. Nielsen* '42
 Ruth Herman Nielsen*
 W. Clayton '42 and Virginia (Jensen '42*) Nielsen
 Paul I. '51* and Agnes (Ravenholt '51) Nussle
 Byron '54 and Alis (Mortensen '54) Olsen
 Rev. Harold E. '45 and Charlene R. Olsen
 Chris A. '93 and Rachel L. (Willems '92) Onsrud
 Leila M. (Lauritzen '43) Patchett
 Esther U. (Johansen '47) Paulsen
 Harlan H. '48 and Anne M. (Jensen '50) Pedersen
 Rolf V. Pedersen '40*
 Ardis (Nielsen '32) Petersen*
 Janice Pohl In Memory of Enoch* & Nanna* Mortensen
 Barbara G. Price '86
 La Verne C. and Janice E. Quass
 Anna Ingeborg Raae*
 Michelle W. (Wilkinson '89) Reynolds
 Clayton L. and Helen Ringgenberg
 Kenneth R. Rolf*
 Richard Morton* Root & Ruth Bailey* Root Charitable Trust Fund
 Esther M. (Jensen '46) Rossman
 Brian W. Samuelson '92
 Michelle K. Wimmer-Sanders '87
 Priscilla Ruth (Rossman '77) Schwartz
 Dana A. (White '74) Shaeffer
 Miriam R. (Rodholm '38) Showalter
 Jennifer S. Simpson
 Richard M. '57 and Karen R. (Sorensen '57) Simpson
 David L. '51 and Arlene F. '71 Sisam
 Casey M. Smith '04
 Gordon J. and Karen J.* Smith
 Rev. Gordon V.* and Florence K. Smith
 The Rev. Donald Sondrol
 Robert H. '40 and Harriet N. (Kruse '40) Sorensen
 Richard F. Sorensen '61
 Robert M. Speed
 Benedict Stockholm '33*
 Halvor H. Strandkov '56
 Elizabeth and Joseph L.* Strasser
 Margaret B. Swanson
 Margaret Syring*
 Ronald L. Taylor
 Richard N. and Eli Thomsen
 Wilber J.* and Cleo (Gould*) Williamson
 Werner E. and Ruby R.* Zarnikow

your view

SUBMIT YOUR WORK FOR PUBLICATION

Alumni may submit original works, including writing, photography and artwork for possible publication in GV Magazine. We'll feature alumni work on this page in each issue. Submit your work to Editor Lacie Sibley at lsibley@grandview.edu or 515-263-2832.

LESSON PLAN FOR EDUCATION

CHARLENE SUMMERS '06

Half way through my master's program, I realized that a college student in the 21st century can reduce a college education to a set of academic exercises. As an educator and educatee, graduate school for me became a list of tasks, a to-do list, that I must check off. My revelation about college shocked me: my education at Grand View did not seem so meaningless or menial. Feeling depressed and dejected, I turned to the one whose texts motivated me to become an English major: Toni Morrison. She brought me to the English department because of her love for language, a passion that I shared, but I realized in grad school that it is a passion I was not allowed to express. The language of the university is the academic language designed to coincide with the myriad academic exercises present. My language suddenly had

...I was prouder of my undergraduate work because my Grand View professors showed me how to use my language.

no value in the academic world. I had such a great experience at Grand View that I was unprepared for the lesson graduate school taught me.

In her Nobel acceptance speech and lecture, Morrison discusses "dead language" or "static language" (13), which she claims, "Unreceptive to interrogation, it cannot form or tolerate new ideas, shape other thoughts" (14). She continues to say that, "Official language smitheried to sanction ignorance and preserve privilege is a suit of armor, polished to shocking glitter, a husk from which the knight departed long ago" (14). I decided to test Morrison's words and challenge the "official language" of the university, including the official subject matter. As Morrison states, "Oppressive language...whether it is the proud but calcified language of the academy or the commodity-driven language of science...must be rejected, altered, and exposed" (16). I soon learned that challenging tradition and challenging the position and authority of the PhDs above me were not going to be tolerated. As I attempted to break away and write what I wanted, write what I genuinely believed, I was consistently shot down and consistently put in my place. Now, I should express the caveat that three of my grad school professors actually allowed me my individual mind and voice, as long as my mind and voice were written in the accepted form.

In order to maintain a solid GPA for future graduate studies, I conformed, and in the process, failed to live up to Morrison's words of advice. I allowed the oppressive language to oppress me. So

I became the "master" of the academic exercise and graduated first in my class with the appropriate title of "Master's Degree." Graduate school taught me that the "master's" in "master's degree" meant simply that I had mastered the arts of hiding my own feelings, tabling my own beliefs, and bluffing my way through 20+ page essays. I have to admit, I was prouder of my undergraduate work because my Grand View professors showed me how to use my language.

I remind myself that Morrison also said that academic language, as a part of static language, is "arrogant pseudo-empirical language crafted to lock creative people into cages of inferiority and hopelessness" (18). She continues, "The vitality of language lies in its ability to limn the actual, imagined and possible lives of its speakers, readers, writers" (20). Grand View taught me what my graduate school did not: to reach outside and inside myself and write what I found there. Dr. Brooke, Dr. Getty, and Dr. Goodwin especially taught me to write my interests, to write my passions, and to understand that my language, the language I use to express my passions, was uniquely my own and alone could express my ideas. GV taught me that language does not oppress, but rather that language frees.

I am teaching this year before moving on to my PhD program, and as an adjunct, I have the opportunity to work with highly impressionable freshman. As I begin both ventures in my educational career, I attempt to obliterate any academic exercises so that both my students and I can truly understand our language and how we can and should use that language to explore and

...I alone can reinforce the value of language and the uses of and places for language in higher education.

fully articulate our passions. As an educator, I must remember that students want and deserve more than a simple piece of paper recognizing a blind accomplishment. As an educatee, I must remember that those above me have more expertise in my field but may not share my passions and may not even understand them. As I move forward, I alone can reinforce the value of language and the uses of and places for language in higher education. So, here I ask you as students and professors, be aware of what writing means, and always remember the multiple levels of power that language carries. Always remember: "We die. That may be the meaning of life. But we do language. That may be the measure of our lives (22, her emphasis)."

Work Cited
Morrison, Toni. Lecture and Speech of Acceptance, Upon the Award of the Nobel Prize for Literature. Knopf: New York, 1994.

CHANGE SERVICE REQUESTED

GET THE GV MAGAZINE

in interactive electronic format!

The GV Magazine just keeps getting better. We're now able to provide it to you in an exciting new interactive electronic format, complete with **hyperlinks**, **video**, a **search capability** and **other useful features**.

You can continue to receive your printed copy and get the electronic version as well...or you can switch to the electronic version alone. **Just tell us how you'd like to receive future issues.**

If we don't hear from you, you'll continue to receive the printed copy only.

Tell us!

To tell us your preference, please go to the Grand View web site at <http://www.grandview.edu>. Click on Alumni and then select Electronic Magazine on the left navigation. You'll go to a form where you can input the information we need to send you access to the electronic version.

We know you'll love the new version! It will help Grand View save on printing and postage costs, as well.

